

SFRMP Management Opportunity Area

NSU 2021

MANAGEMENT OPPORTUNITY AREA (MOA) DESCRIPTION	
MOA Name	Niles Bay OFMC
MOA Type	Old Forest Management Complex OFMC
Location (Eco. Section, TRS)	Northern Superior Uplands (NSU); Township 63-Range 17-Section 20,29; Kabetogama State Forest, St. Louis County
NPC System	Native plant communities (NPC) found within the MOA include : Fire Dependent Forest systems (FDn43)
Acres by Land Status	134 acres on forestry administered School Trust lands
School trust lands within this MOA	The establishment of MOAs does not supersede any current DNR policy or guideline, including school trust lands policy. Any MOA-specific management on school trust lands must occur within the parameters of the DNR's <i>Operational Order 121: Management of School Trust Lands</i> , including <i>Appendix B: Best Management Practices for Forest Management on School Trust Lands</i> . The operational order specifies maximum reserve allowances on all school trust lands, including those within MOAs. In addition, regeneration of harvested stands on school trust lands must yield fully stocked stands to ensure their future economic productivity. The DNR's <i>MOA Definition and Implementation Direction</i> documentation provides more information for managers on how to implement MOAs while also following all current DNR policy.
Current Conditions	<ul style="list-style-type: none"> • Located around red pine, jack pine, aspen old growth • Located on a bedrock complex land type association; landscape is extensive dry uplands with large lakes • Entirely within a Minnesota biological survey (MBS) site of high significance, with few mapped NPCs • Covertypes are white spruce, aspen, red pine, northern hardwood • Median age is 40 years • The OFMC offers upland habitat adjacent to extensive lowland stagnant spruce, providing contiguous habitat for forest wildlife and plants that require older forest characteristics. • Some forest roads and ATV trails cross this OFMC

FUTURE DIRECTION	
10-Year Management Intent	<p>The intent of OFMCs is to enhance the conservation value of designated old-growth and spatially extend their resource values. OFMCs serve policy, management, and ecological purposes. They include three different elements: 1) designated old-growth stands, 2) Special management zones (SMZ) around these stands, and 3) additional stands managed for older growth stage characteristics.</p> <ul style="list-style-type: none"> • This OFMC will protect older forest components that support common and rare plant and animal species; additional intent is to extend travel corridors and connectivity between contiguous forest areas.
10-Year Management Intent (continued)	<ul style="list-style-type: none"> • Harvest within the OFMC may promote older growth stage components and biological legacies. These serve as genetic reservoirs for biological diversity. • This OFMC provides unique educational, recreation and forest research opportunities.
Strategies to Achieve 10-year Intent	<ul style="list-style-type: none"> • Consider management for long-lived species characteristic of NPCs. • Mean stand age may increase during planning period. • Identified insect and disease (I&D) concerns should be addressed in management coordination. • Retain standing coarse woody debris (snags of various decay classes) as much as possible. • Retain down coarse woody debris of various decay classes as much as possible. • Retain older trees (wolfie aspen, aging birch, mature conifers and hardwoods) while following sustainable timber harvest (STH) regimes as much as possible. • Retain low-value trees for structural variation and contribution to woody debris as much as possible.
SFRMP Goals this MOA Will Advance	<p>This MOA offers opportunities to address section-wide SFRMP goals:</p> <ul style="list-style-type: none"> • Ensure older forest stands and older forest characteristics within stands are distributed across the landscape. • Represent all native plant community class growth stages on state lands to the extent possible. • Provide a variety of vegetation conditions and habitat components at multiple scales simultaneously to support wildlife species found in the Section.
Direction or Consideration for Specific Stands (optional)	None
Future Planning Considerations (optional) Noted by Division authoring statement Not discussed during 2020 MOA vetting process, for consideration during future planning process	<p>With no harvest planned, this OFMC has potential to improve with increase of stand ages and continued development of older forest characteristics into the next planning cycle. (EWR)</p>

Attach a list of stands by Stand ID from FIM

t06317w1200135

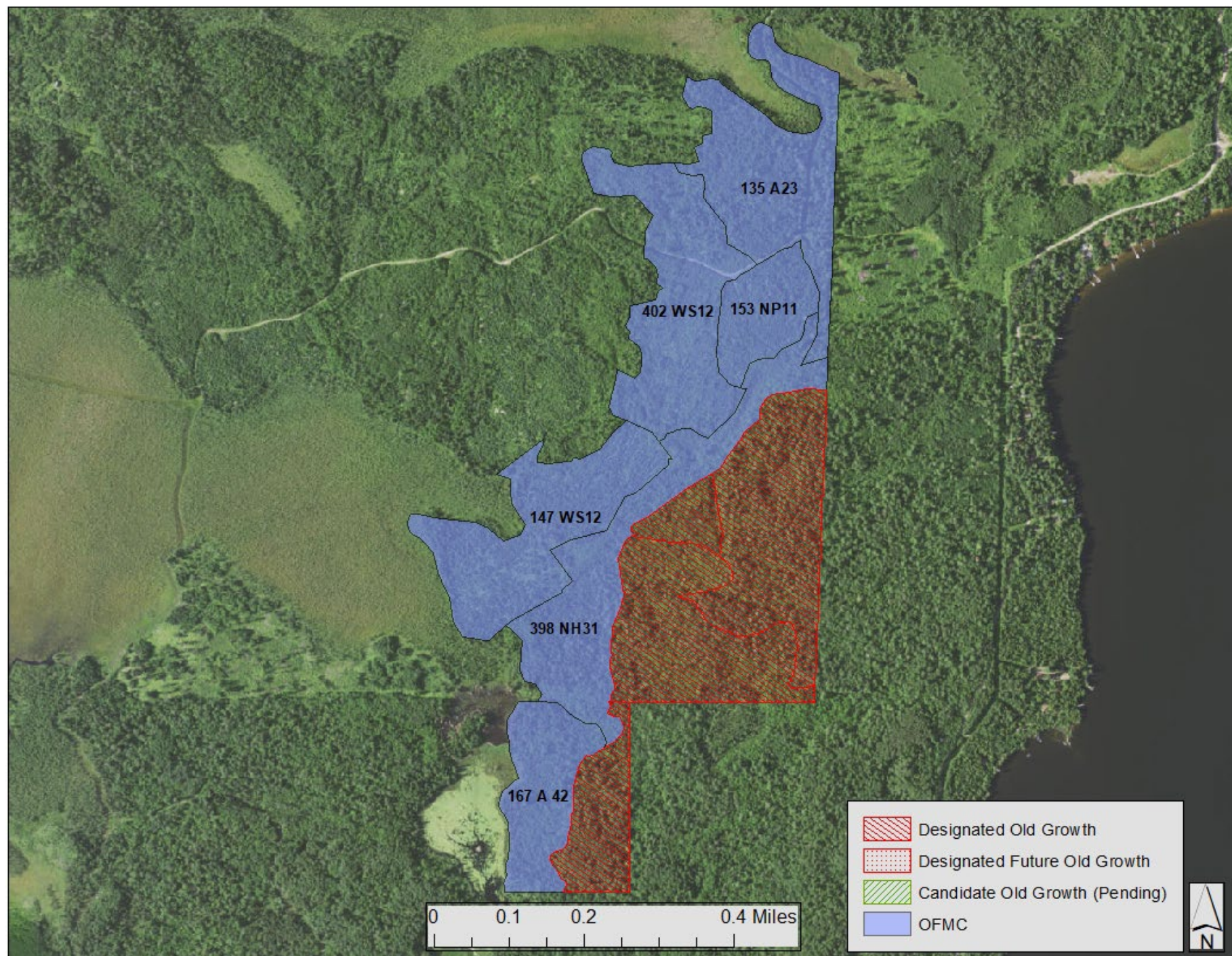
t06317w1200153

t06317w1200398

t06317w1200402

t06317w1200147

t06317w1290167



LANDSCAPE MOA MAP

