

SFRMP Management Opportunity Area



MANAGEMENT OPPORTUNITY AREA (MOA) DESCRIPTION	
MOA Name	Honeymoon Trail OFMC
MOA Type	Old Forest Management Complex
Location (Eco. Section, TRS)	NSU; T61N-R4W-S36; Pat Bayle State Forest; Cook County
NPC System	Mesic Hardwood Forest (MHn45a,b,+c) Fire Dependent Forest (FDn43)
Acres by Land Status	282 acres of School Trust
School trust lands within this MOA	The establishment of MOAs does not supersede any current DNR policy or guideline, including school trust lands policy. Any MOA-specific management on school trust lands must occur within the parameters of the DNR's <i>Operational Order 121: Management of School Trust Lands</i> , including <i>Appendix B: Best Management Practices for Forest Management on School Trust Lands</i> . The operational order specifies maximum reserve allowances on all school trust lands, including those within MOAs. In addition, regeneration of harvested stands on school trust lands must yield fully stocked stands to ensure their future economic productivity. The DNR's <i>MOA Definition and Implementation Direction</i> documentation provides more information for managers on how to implement MOAs while also following all current DNR policy.
Current Conditions	<ul style="list-style-type: none"> • Surrounds a large old growth complex of northern hardwoods on three sides. • Located on a till plain a land type associations; landscape is mostly upland with little topographic variation. • Within a moderate MBS site, with some rare NPCs (MHn45b+c). • Covertypes are mostly northern hardwoods, with balsam fir, birch, and cedar. • Age range 18 to 127; mean age is 82 years. • A few forest roads and OHV trails intersect the edges. • The OFMC overlaps the Honeymoon Trail Patch, which has similar goals. The area provides contiguous habitat for many species of forest wildlife and plants that require older forest characteristics.

FUTURE DIRECTION

<p>10-Year Management Intent</p>	<p>The intent of OFMCs is to enhance the conservation value of designated old-growth and spatially extend their resource values. OFMCs serve policy, management, and ecological purposes. They include three different elements: 1) designated old-growth stands, 2) SMZs around these stands, and 3) additional stands managed for older growth stage characteristics.</p> <ul style="list-style-type: none"> • This OFMC will protect older forest components that support common and rare plant and animal species; additional intent is to extend travel corridors and connectivity between contiguous forest areas. • Harvest within the OFMC will promote older growth stage components and biological legacies. These serve as genetic reservoirs for biological diversity, including the potential for rare <i>Botrychium</i> and salamanders. • This OFMC provides unique educational, recreation and forest research opportunities. • Average stand age may maintain or increase during planning period while following STH regimes. • All management will follow current direction for harvest regimes within school trust guidance documents.
<p>Strategies to Achieve 10-year Intent</p>	<ul style="list-style-type: none"> • Retain standing coarse woody debris (snags of various decay classes) • Retain down coarse woody debris of various decay classes • Retain older trees (wolfie aspen, aging birch, mature conifers and hardwoods) • Retain low-value trees for structural variation and contribution to woody debris. • Identified I&D concerns should be addressed in management coordination • Final harvest management regimes will be applied when appropriate to address long-term stand productivity; actively coordinate at field level for these situations.
<p>Draft SFRMP Goals this MOA Will Advance</p>	<p>This MOA offers opportunities to address section-wide SFRMP goals:</p> <p>3.1 Forest Composition and Within-stand Diversity</p> <ul style="list-style-type: none"> • <i>GDS 1A: Maintain diversity of cover types.</i> • <i>GDS-1B: Manage within stands to reflect the composition, structure, and function of native plant communities.</i> • <i>GDS-1C: Maintain or increase species, age, and structural diversity within some stands.</i> <p>3.3 Biological Diversity, Young and Old Forest, and Spatial Distribution</p> <ul style="list-style-type: none"> • <i>GDS-3A: Provide older forest in the section across the landscape to account for timber products, wildlife habitat, and ecological diversity.</i> • <i>GDS-3G: Represent native plant community class growth stages on state lands.</i>
<p>Direction or Consideration for Specific Stands (optional)</p>	<p>None</p>

FUTURE DIRECTION

**Future Planning
Considerations (optional)**

**Noted by Division authoring
statement**

**Not discussed during 2020
MOA vetting process, for
consideration during future
planning process**

This OFMC has good potential to carry forward MOA goals into the next planning cycle. Long-term large landscape management is achieved by pairing this OFMC with the Honeymoon Trail Patch MOA. (EWR)

List of stands by Stand ID from FIM

t06104w1360155

t06104w1360160

t06104w1360162

t06104w1360166

t06104w1360171

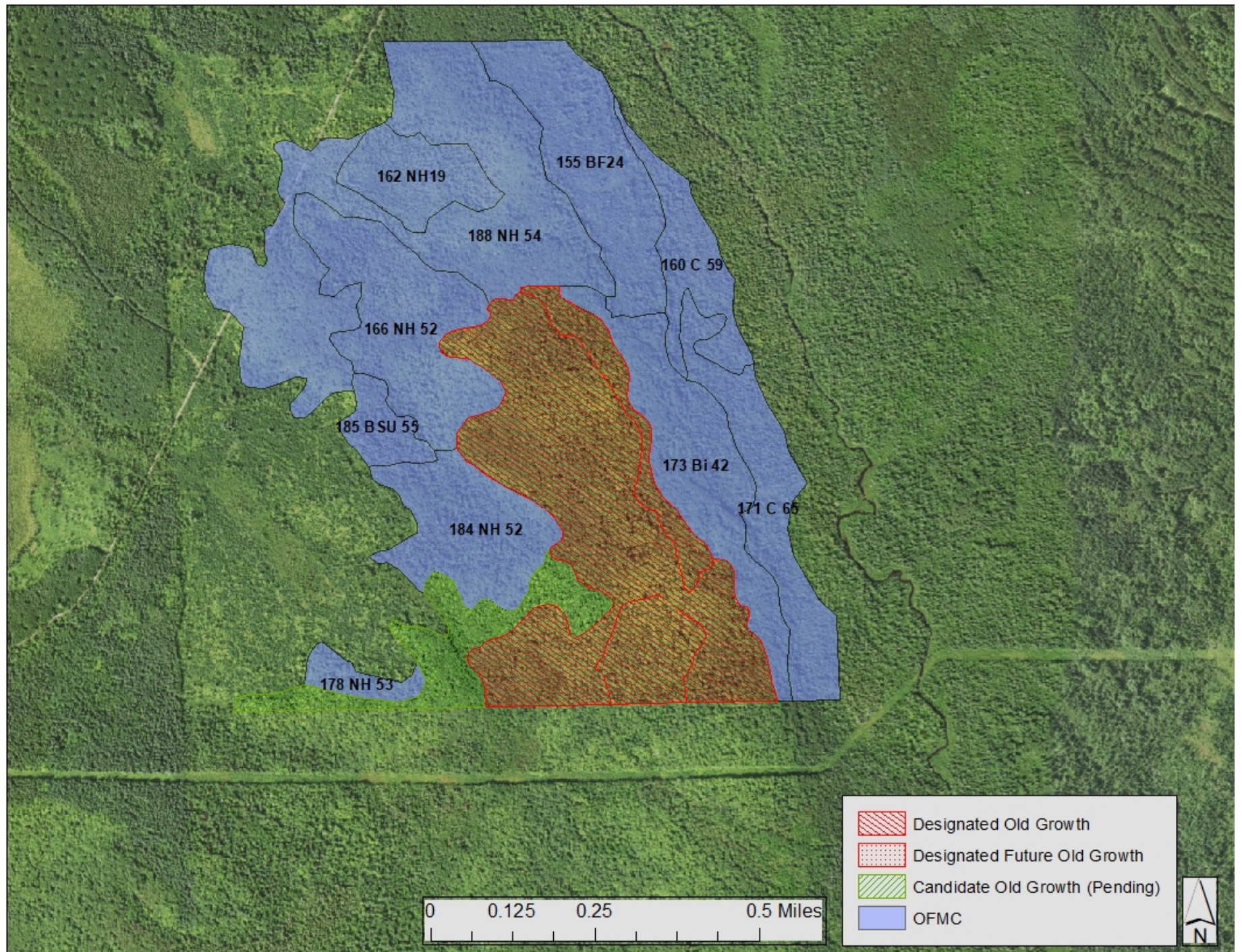
t06104w1360173

t06104w1360178

t06104w1360184

t06104w1360185

t06104w1360188



LANDSCAPE MOA MAP

