

SFRMP Management Opportunity Area



NSU 2021

MANAGEMENT OPPORTUNITY AREA (MOA) DESCRIPTION	
MOA Name	Beaver River OFMC
MOA Type	Old Forest Management Complex (OFMC)
Location (Eco. Section, TRS)	Northern Superior Uplands (NSU); Township 55 Range 8 Section 16; Lake County
NPC System	<p>Native plant community (NPC) systems found within this MOA include: Fire Dependent Forest, Acid Peatland, Forested Rich Peatland, Wet Forest systems, Cliff Talus systems, and Rock Outcrop systems.</p> <p>Known native plant communities (NPC) within this area include: Northern poor dry-mesic mixed woodland FDn32a, northern mesic mixed forest FDn43b1 (majority) FDn43c, Northern poor conifer swamp APn81b, Northern alder swamp FPn73a, northern wet cedar forest WFn53a, Northern dry cliff CTn11a, northern open talus CTn12a, northern mesic cliff CTn32a, northern bedrock outcrop ROn12b</p>
Acres by Land Status	382 acres forestry administered school trust
School trust lands within this MOA	The establishment of MOAs does not supersede any current DNR policy or guideline, including school trust lands policy. Any MOA-specific management on school trust lands must occur within the parameters of the DNR's <i>Operational Order 121: Management of School Trust Lands</i> , including <i>Appendix B: Best Management Practices for Forest Management on School Trust Lands</i> . The operational order specifies maximum reserve allowances on all school trust lands, including those within MOAs. In addition, regeneration of harvested stands on school trust lands must yield fully stocked stands to ensure their future economic productivity. The DNR's <i>MOA Definition and Implementation Direction</i> documentation provides more information for managers on how to implement MOAs while also following all current DNR policy.
Current Conditions	<ul style="list-style-type: none"> • Surrounds white spruce old growth • Located in till plain land type association with steep slopes transitioning between upland and drainages to Black Sand Creek. • FIM covertypes are balsam fir and paper birch, with 1 Balm of Gilead • 162 acres are inoperable due to steep slopes • Ages are 66-112 years, with mean age 80 years • Within an outstanding MBS site, mapped with many varied NPCs • Superior Hiking Trail crosses the southeast corner; possible Lake County bike trail development • Pending consideration for land trade with Lake County (School Trust Lands only)

FUTURE DIRECTION

10-Year Management Intent

The primary intent of OFMCs is to enhance the conservation value of designated old-growth and spatially extend their resource values. OFMCs serve policy, management, and ecological purposes. They include three different elements: 1) designated old-growth stands, 2) Special management zone (SMZ) around these stands, and 3) additional stands managed for older growth stage characteristics.

- The intent of this OFMC is to improve the older forest context and buffering capacity around white spruce old growth.
- This OFMC will provide older forest habitat for plant and animal species and extend travel corridors and connectivity between contiguous forest areas.
- Harvest within the OFMC will promote older growth stage components and biological legacies.
- This OFMC provides educational, recreation and forest research opportunities.
- All management will follow current direction for harvest regimes within school trust guidance documents.

Strategies to Achieve 10-year Intent

- Seek opportunities to retain species diversity inherent in FDn43, mapped throughout this OFMC.
- Mean stand age (80 years) may maintain during planning period while following sustainable timber harvest regimes.
- Allow natural regeneration and conversion of non-forest stands to forest within OFMC.
- Retain standing coarse woody debris (snags of various decay classes).
- Retain down coarse woody debris of various decay classes.
- Identified Insect and disease concerns should be addressed in management coordination.
- Retain older trees (wolfie aspen, aging birch, mature conifers and hardwoods) while following sustainable timber harvest regimes.
- Retain low-value trees for structural variation and contribution to woody debris within sustainable timber harvest regimes.
- Final harvest management regimes will be applied when appropriate to address long-term stand productivity; actively coordinate at field level for these situations.

SFRMP Goals this MOA Will Advance

This MOA offers opportunities to address section-wide SFRMP goals:

- Ensure older forest stands and older forest characteristics within stands are distributed across the landscape.
- Represent all native plant community class growth stages on state lands to the extent possible.
- Provide a variety of vegetation conditions and habitat components at multiple scales simultaneously to support wildlife species found in the Section.

Direction or Consideration for Specific Stands (optional)

Within the Beaver River AMA:
t05508w1090060: increase conifers per FDn43 growth stage development
t05508w1090059: maintain/increase species diversity and stand age class

FUTURE DIRECTION

Future Planning Considerations (optional)
Noted by Division authoring statement
Not discussed during 2020 MOA vetting process, for consideration during future planning process

This OFMC has potential to carry forward MOA goals into the next planning cycle. It will continue to support HCVF values, patch MOA goals, and AMA water quality concerns. (EWR)

List of stands by Stand ID from FIM

t05508w1090059

t05508w1090060

t05508w1160066

t05508w1160069

t05508w1160072

t05508w1160074

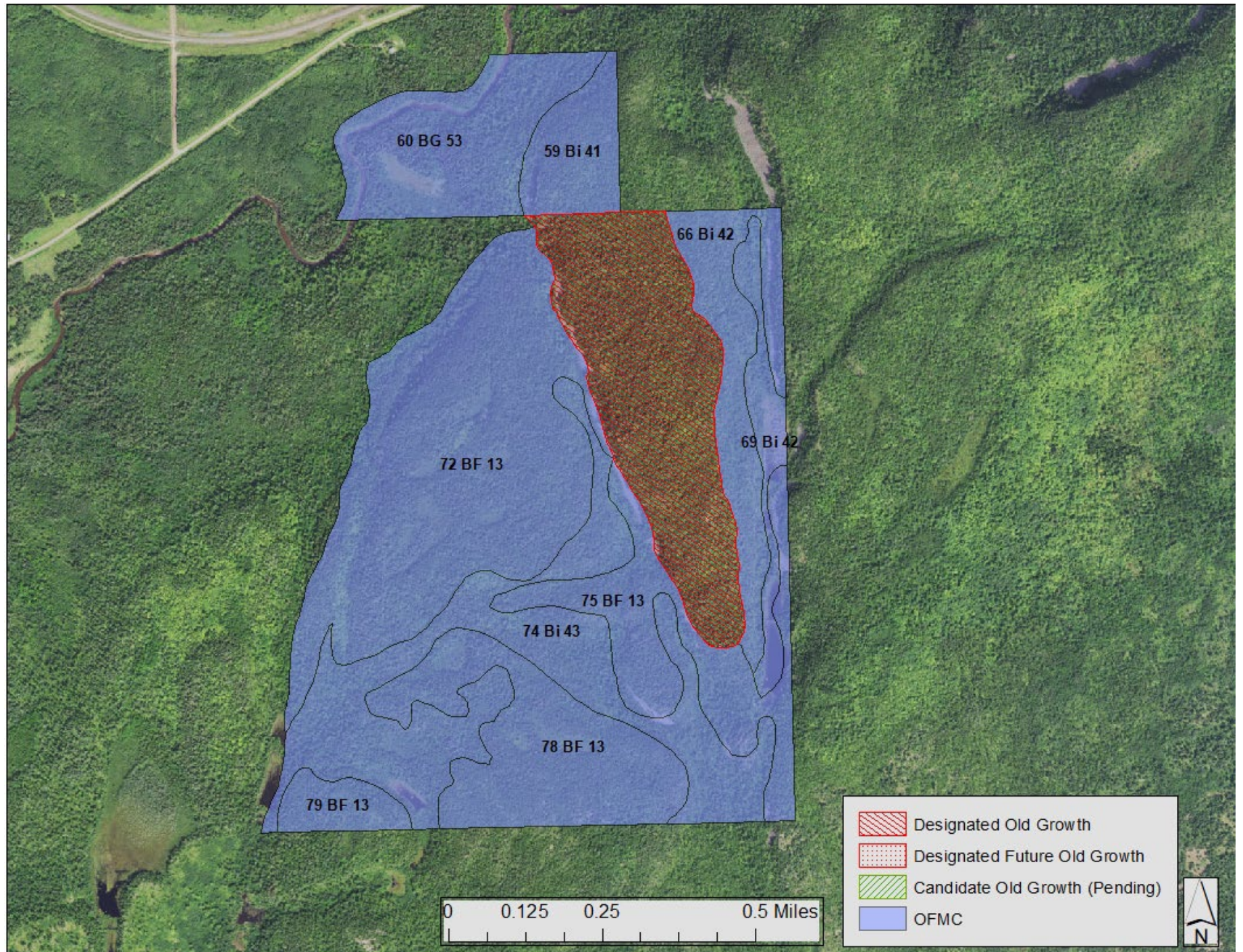
t05508w1160075

t05508w1160078

t05508w1160079

SFRMP Management Opportunity Area

NSU 2021



LANDSCAPE MOA MAP

