

# SFRMP Management Opportunity Area



MDLP SFRMP 2021

MANAGEMENT OPPORTUNITY AREA (MOA) DESCRIPTION	
<b>MOA Name</b>	Paul Bunyan State Forest RGMA
<b>MOA Type</b>	Ruffed Grouse Management Area
<b>Location (Eco. Section, TRS)</b>	MDLP; T142N, R33W, Secs 24, 25
<b>NPC System</b>	FDc34, MHc26
<b>Acres by Land Status (approx.)</b>	459 acres total: 442 acres are non-school trust (acquired) lands and 36 acres are school trust lands, all administered by the Division of Forestry
<b>School trust lands within this MOA</b>	The establishment of MOAs does not supersede any current DNR policy or guideline, including school trust lands policy. Any MOA-specific management on school trust lands must occur within the parameters of the DNR's <i>Operational Order 121: Management of School Trust Lands</i> , including <i>Appendix B: Best Management Practices for Forest Management on School Trust Lands</i> . The operational order specifies maximum reserve allowances on all school trust lands, including those within MOAs. In addition, regeneration of harvested stands on school trust lands must yield fully stocked stands to ensure their future economic productivity. The DNR's <i>MOA Definition and Implementation Direction</i> documentation provides more information for managers on how to implement MOAs while also following all current DNR policy.
<b>Current Conditions</b>	<p>This MOA is comprised primarily of aspen in a variety of age classes, with a mix of smaller amounts of other cover types:</p> <ul style="list-style-type: none"> <li>• Low site index aspen, 9-18 years old (94 acres)</li> <li>• High site index aspen, 6-36 years old (294 acres)</li> <li>• Red pine plantation, 52-57 years old (56 acres)</li> <li>• White spruce, 14 years old (5 acres)</li> </ul> <p>Within this MOA, 37 acres of aspen and 56 acres of red pine plantation are on the 10-year stand exam list.</p>

FUTURE DIRECTION	
<b>Intent for 10-Year Management</b>	Ruffed Grouse Management Areas are located in areas that have good potential for producing grouse and woodcock and are managed to promote suitable habitat conditions for these species. Characteristics that help achieve this goal include multiple age classes of aspen in small blocks, conifers for cover, some older aspen trees for food, and coarse woody debris and drumming logs.

<b>FUTURE DIRECTION</b>	
<b>Strategies to Achieve 10-Year Intent</b>	<ul style="list-style-type: none"> <li>• Maintain multiple age classes (3-5 age classes in 10-15 year increments) evenly distributed throughout the RGMA</li> <li>• Harvest aspen in small blocks (20 acres preferred), while ensuring there are enough blocks the same age across the MOA to make timber sales marketable</li> <li>• Coordinate on use of scattered vs. clumped reserves and which species to focus reserves on. Reserves can be used to accomplish MOA goals by:               <ul style="list-style-type: none"> <li>○ Creating coarse woody debris and drumming logs by retaining downed trees and standing snags.</li> <li>○ Retaining some old aspen and other mature species within reserves to provide food for grouse, habitat for other species, and future coarse woody debris and drumming logs.</li> <li>○ Retaining some conifers for grouse cover, particularly balsam fir, spruce, and cedar.</li> </ul> </li> <li>• Utilize existing access trails for multiple uses, including:               <ul style="list-style-type: none"> <li>○ Motorized and non-motorized uses</li> <li>○ Access routes for management and hunter access only</li> </ul> </li> </ul>
<b>SFRMP Goals this MOA Will Advance</b>	<p>This MOA offers opportunities to address section-wide SFRMP goals:</p> <ul style="list-style-type: none"> <li>• Provide a variety of vegetation conditions and habitat components at multiple scales simultaneously to support wildlife species found in the Section.</li> <li>• Ensure young, early-successional forest is distributed across the landscape over time.</li> <li>• Ensure older forest characteristics within stands are distributed across the landscape.</li> </ul>
<b>Direction or Consideration for Specific Stands (optional)</b>	
<b>Future Planning Considerations (optional)</b>  <b>Non-binding ideas, not reviewed for agreement</b>	<ul style="list-style-type: none"> <li>• Manage stands more along topography than the existing rectangular stand lines.</li> <li>• Select stands and stand exam years when developing 10-year stand exam lists to maintain or develop desired age class distribution.</li> </ul>

**List of stands by Stand ID from FIM**

t14232w1250783	t14233w1250480
t14233w1250356	t14233w1250481
t14233w1250362	t14233w1250554
t14233w1250373	t14233w1250555
t14233w1250374	t14233w1250569
t14233w1250375	t14233w1250616
t14233w1250377	t14233w1250617
t14233w1250390	t14233w1250697
t14233w1250392	t14233w1250698
t14233w1250479	t14233w1259011

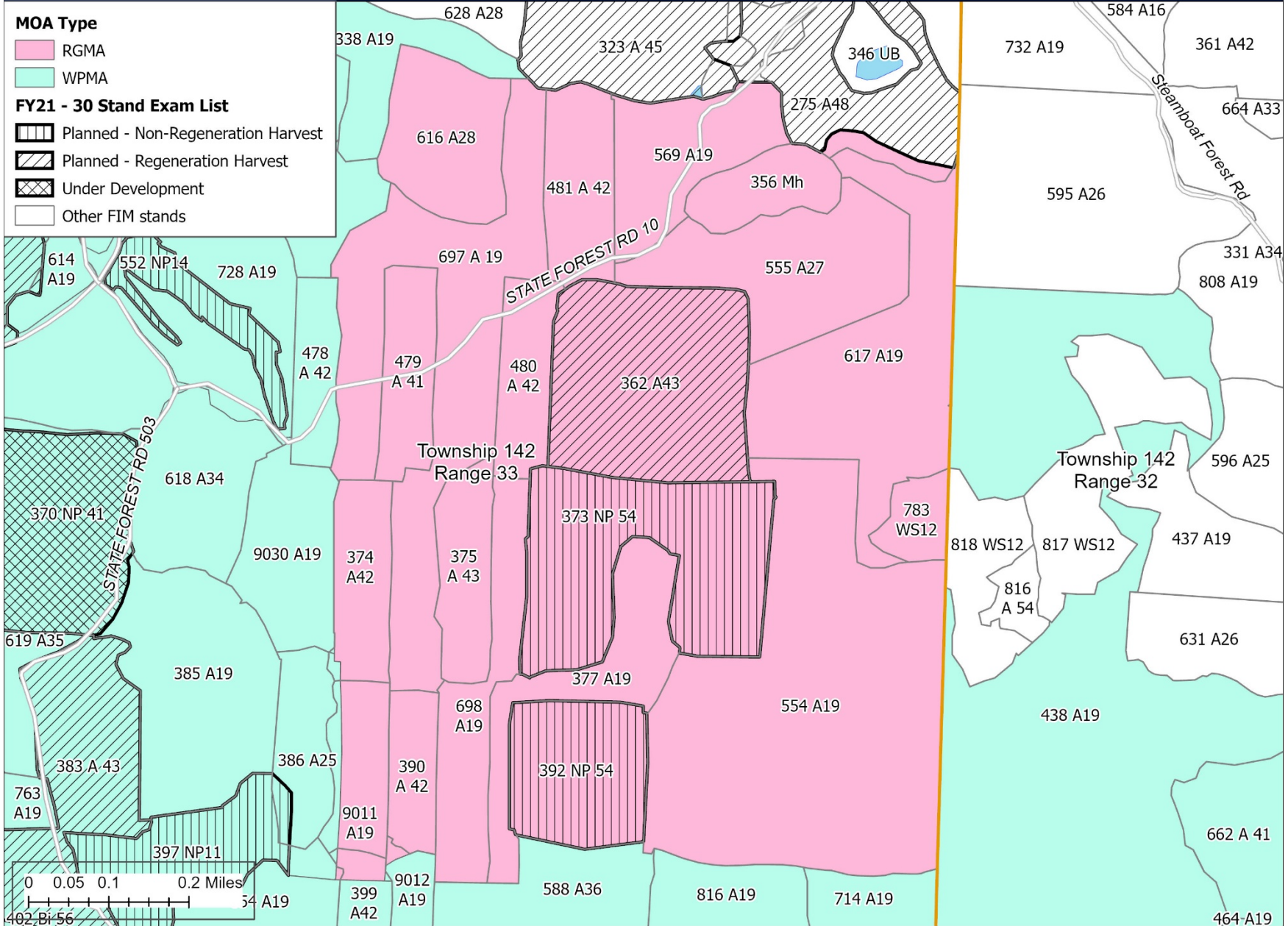
# LOCAL MOA MAP

## MOA Type

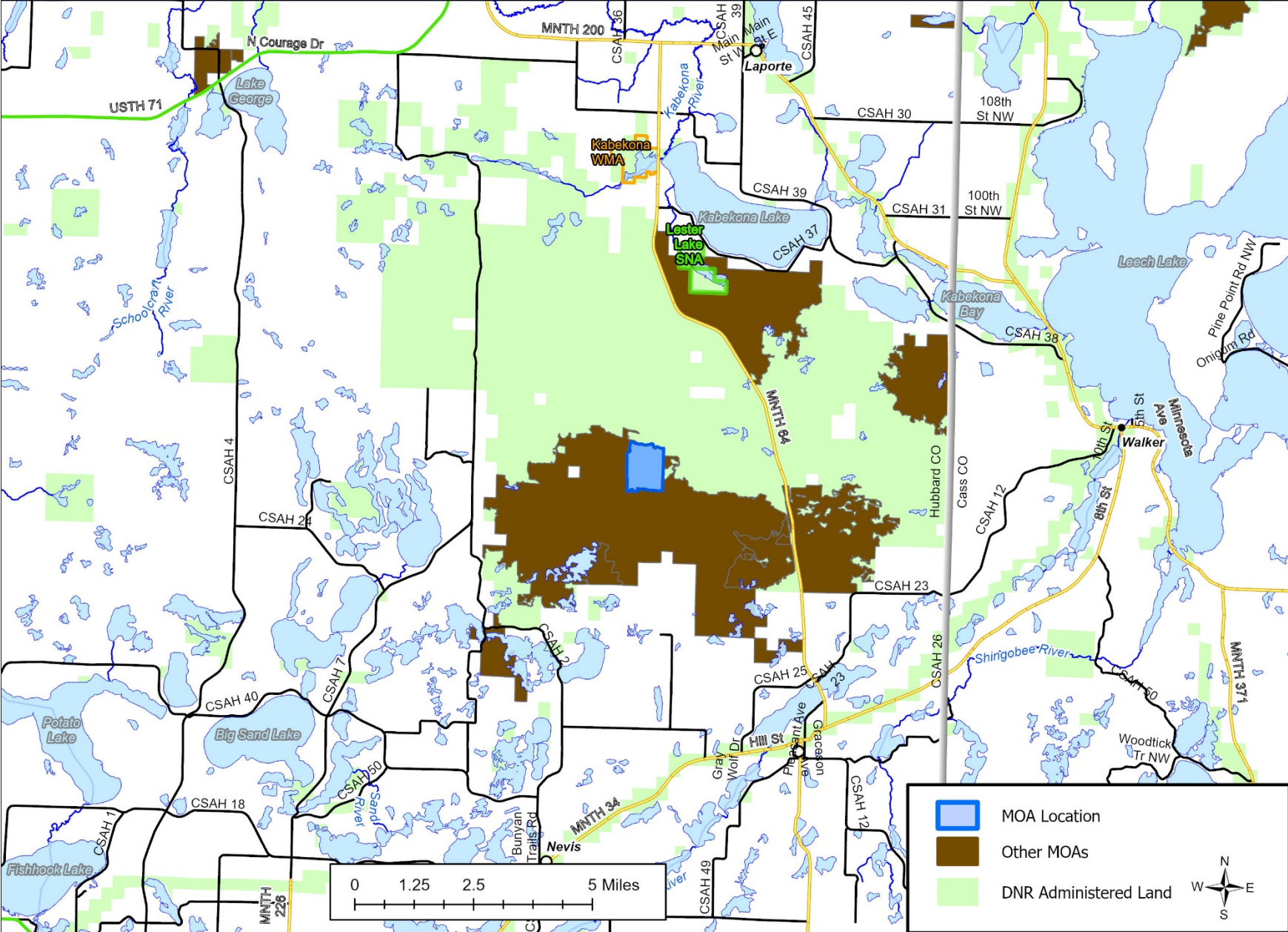
- RGMA
- WPMA

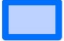

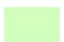
## FY21 - 30 Stand Exam List

- Planned - Non-Regeneration Harvest
- Planned - Regeneration Harvest
- Under Development
- Other FIM stands



# LANDSCAPE MOA MAP



	MOA Location
	Other MOAs
	DNR Administered Land

