

SFRMP Management Opportunity Area



MDLP 2021

MANAGEMENT OPPORTUNITY AREA (MOA) DESCRIPTION	
MOA Name	Morph Meadows OFMC
MOA Type	Old Forest Management Complex
Location (Eco. Section, TRS)	MDLP; T147N, R29W, Secs 10, 14-16, 22, 23
NPC System	Blackduck Moraine land type association
Acres by Land Status (approx.)	935 acres total: all school trust lands administered by the Division of Forestry
School trust lands within this MOA	The establishment of MOAs does not supersede any current DNR policy or guideline, including school trust lands policy. Any MOA-specific management on school trust lands must occur within the parameters of the DNR's <i>Operational Order 121: Management of School Trust Lands</i> , including <i>Appendix B: Best Management Practices for Forest Management on School Trust Lands</i> . The operational order specifies maximum reserve allowances on all school trust lands, including those within MOAs. In addition, regeneration of harvested stands on school trust lands must yield fully stocked stands to ensure their future economic productivity. The DNR's <i>MOA Definition and Implementation Direction</i> documentation provides more information for managers on how to implement MOAs while also following all current DNR policy.
Current Conditions	<p>This OFMC is adjacent to the Morph Meadows DMA, and is comprised of a mix of cover types including:</p> <ul style="list-style-type: none"> • Aspen, 1-100 years old (410 acres) • White cedar, 81-150 years old (160 acres) • Non-forest cover types (160 acres) • Smaller amounts of other cover types including balsam fir, stagnant cedar, lowland spruce and tamarack, and white pine. <p>This MOA contains six stands that are Designated Old Growth in the Forest Stand Inventory.</p> <p>Approximately 270 acres of aspen within this MOA are on the 10-year stand exam list during this planning period.</p>

FUTURE DIRECTION	
Intent for 10-Year Management	<p>OFMCs are intended to enhance the conservation value of designated old-growth stands through the management of additional stands around their special management zones (SMZs). They are intended to complement and support values represented by the designated old-growth stands they are associated with. OFMCs serve policy, management, and ecological purposes.</p> <p>Characteristics within OFMC stands are intended to provide values around old growth stands, including:</p>

FUTURE DIRECTION

Intent for 10-Year Management (Continued)

- Further reduction in edge effects and disturbance on designated old-growth stands (beyond SMZs).
- A source of genetic continuity and diversity that supplement the designated old-growth stand.
- Habitat for forest species that depend on large blocks of continuous mature forest.
- Recreational and aesthetic values associated with older forests with large trees.
- Opportunities to use older forests for research or educational purposes.

The future direction guidance here applies to the SMZ around old growth stands included in the OFMC, in addition to SMZ direction. Refer to Old Growth policy Amendment #5 for further information and consult with Regional Old Growth committee for any needed clarification.

This area is also intended to complement the adjacent Deer Management Area to the north (Morph Meadows DMA).

Strategies to Achieve 10-Year Intent

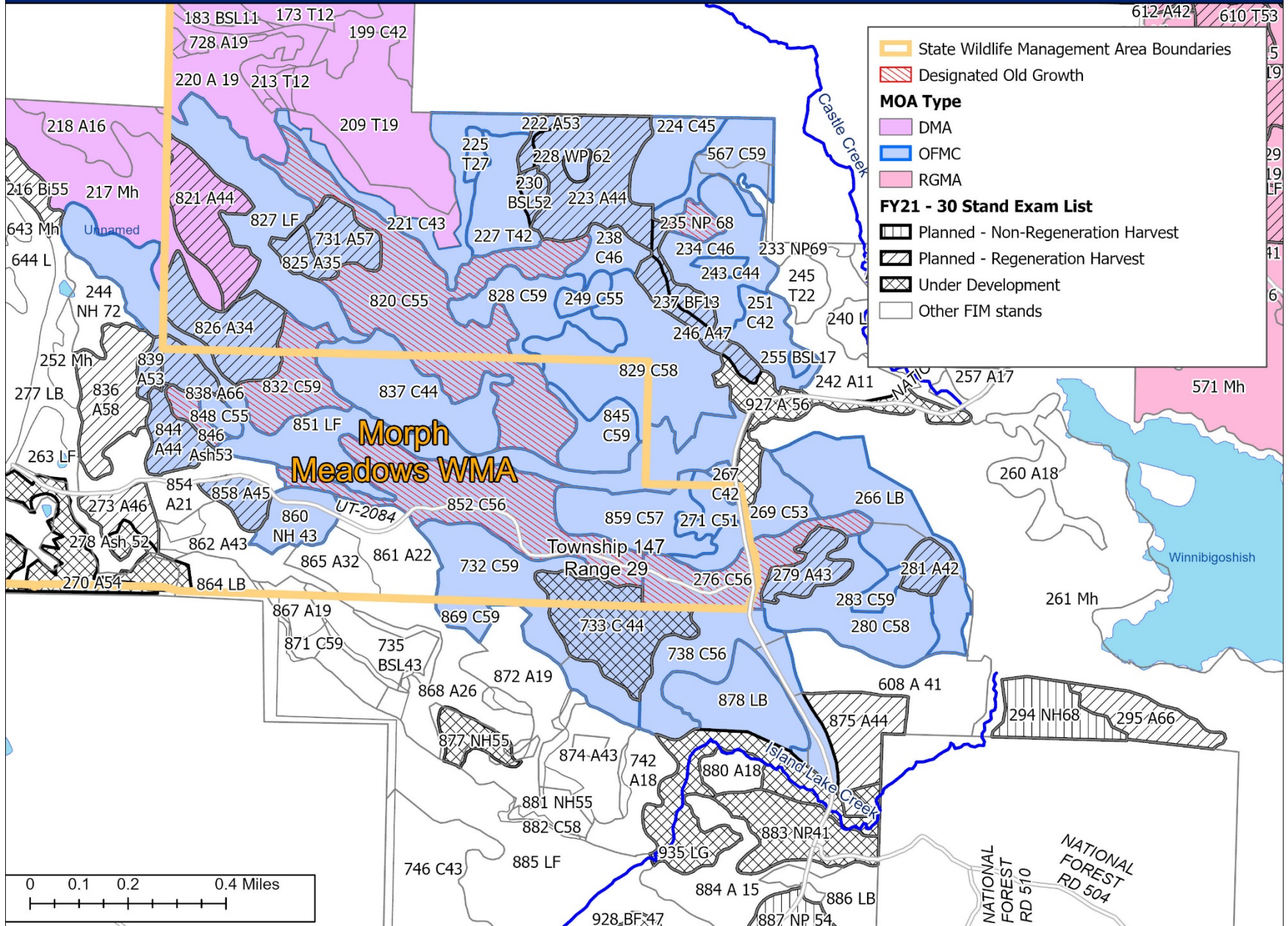
- Retain existing or increase longer-lived species appropriate to native plant communities (NPC) in even-aged stands, for example, via leave trees, reserve patches, and encouraging regeneration of longer-lived species
- Increase or maintain conifer cover appropriate to the NPC within stands, especially species such as white cedar, balsam fir, and spruce that provide winter snow shelter for deer
- Maintain or increase oak and other mast-producing species within stands.
- Assess whether greater than 5% reserves may be left for operational or marketability reasons, or when needed to adhere to riparian management zone guidelines (as per Operational Order 121: Managing School Trust Lands Appendix B).
- Encourage development of or retain structural components of older NPC growth stages within stands, such as:
 - Large downed logs and standing dead trees
 - Trees that will become future snags and downed logs
 - Large living trees
 - Tip-up mounds and nurse logs
 - Increased diversity of tree sizes and ages
 - Older, large, or unmerchantable wolfie trees
- Coordinate on the placement of reserve islands to meet goals for winter snow shelter, considering forest health and conifer regeneration goals on the site
- Consider prioritizing conversion (passive or active) to longer-lived species associated with later NPC growth stages within OFMCs, where good opportunities arise
- Increase connectivity among adjacent stands using reserves

FUTURE DIRECTION	
Strategies to Achieve 10-Year Intent (Continued)	<ul style="list-style-type: none"> Plan treatment to maximize wind-firmness within OFMC, especially for the old growth stand Consider thinning techniques such as variable density to enhance conifer deer canopy cover and food Additional wildlife funded projects could include conifer, oak and other hardwood release work in regenerating stands, planting additional species of conifers and consideration of natural regeneration of hardwoods as crop trees to become a fully stocked stands as required by trust fund policy Ensure placement of skid trails and logging roads to protect soil and reduce likelihood of invasive species If there is a desire to use a prescription other than the preliminary prescription due to field-level conditions, use standard coordination procedures to integrate the MOA's intent to the fullest extent possible, following the Executive FRIT MOA implementation instructions.
SFRMP Goals this MOA Will Advance	<p>This MOA offers opportunities to address section-wide SFRMP goals:</p> <ul style="list-style-type: none"> Ensure older forest stands and older forest characteristics within stands are distributed across the landscape. Represent all native plant community class growth stages on state lands to the extent possible. Provide a variety of vegetation conditions and habitat components at multiple scales simultaneously to support wildlife species found in the Section.
Direction or Consideration for Specific Stands (optional)	
Future Planning Considerations (optional) Non-binding ideas, not reviewed for agreement	

List of stands by Stand ID from FIM

t14729w1030068	t14729w1100139	t14729w1100188	t14729w1110176
t14729w1030077	t14729w1100146	t14729w1100191	t14729w1110182
t14729w1030078	t14729w1100148	t14729w1100199	t14729w1110184
t14729w1030086	t14729w1100155	t14729w1100200	t14729w1110186
t14729w1030088	t14729w1100157	t14729w1100209	t14729w1110192
t14729w1090724	t14729w1100160	t14729w1100213	t14729w1110195
t14729w1100102	t14729w1100168	t14729w1100728	t14729w1150220
t14729w1100104	t14729w1100170	t14729w1100919	t14729w1150821
t14729w1100107	t14729w1100173	t14729w1110113	t14729w1160217
t14729w1100109	t14729w1100177	t14729w1110153	t14729w1160218
t14729w1100121	t14729w1100178	t14729w1110161	
t14729w1100133	t14729w1100183	t14729w1110165	

LOCAL MOA MAP



LANDSCAPE MOA MAP

