



Status of Emerald Ash Borer in Minnesota

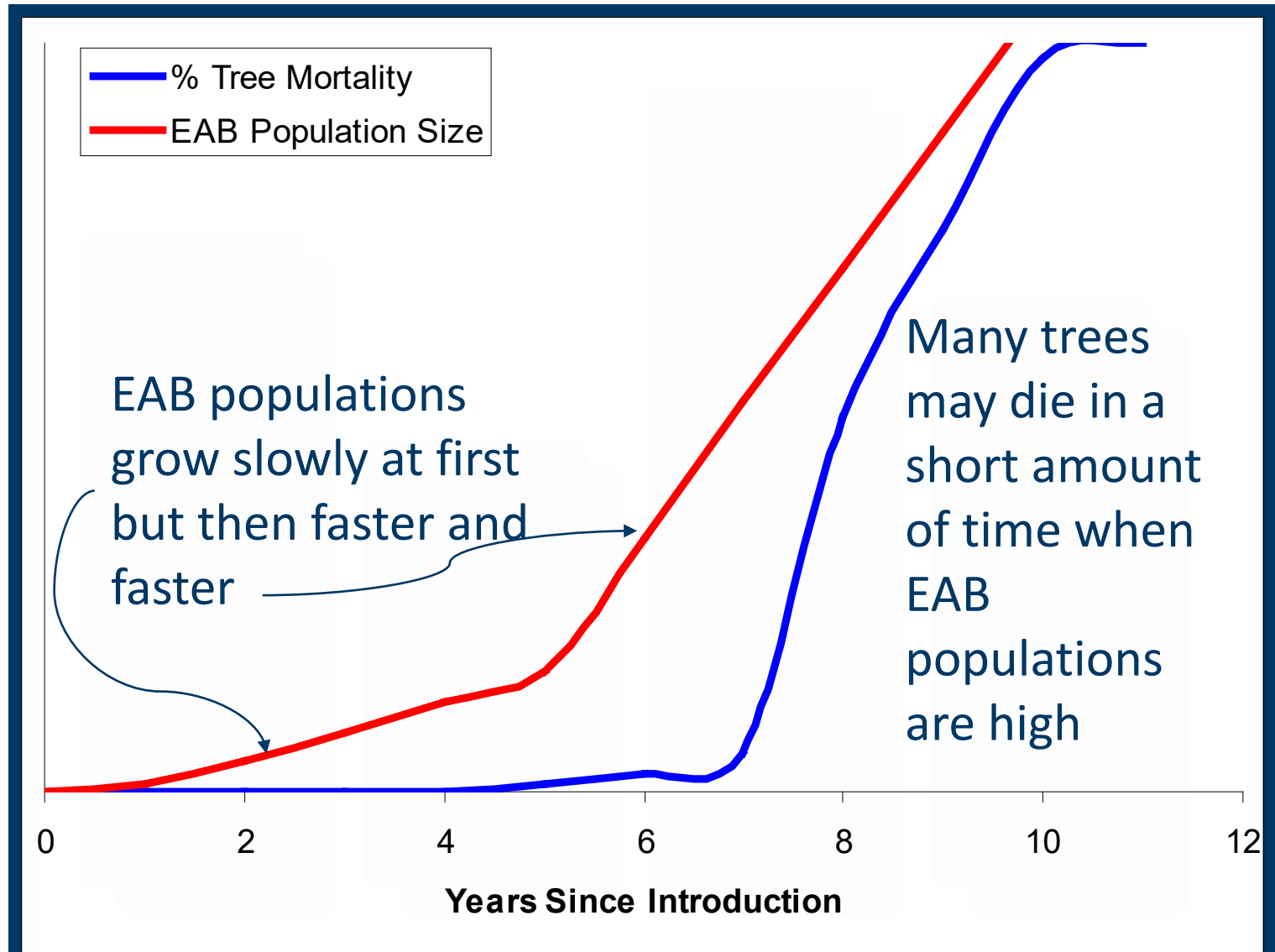
Jonathan Osthus, EAB Technical Assistance Coordinator

Jonathan.Osthus@state.mn.us | (651) 201- 6248



mda.state.mn.us/eab

How Does EAB Kill Trees?

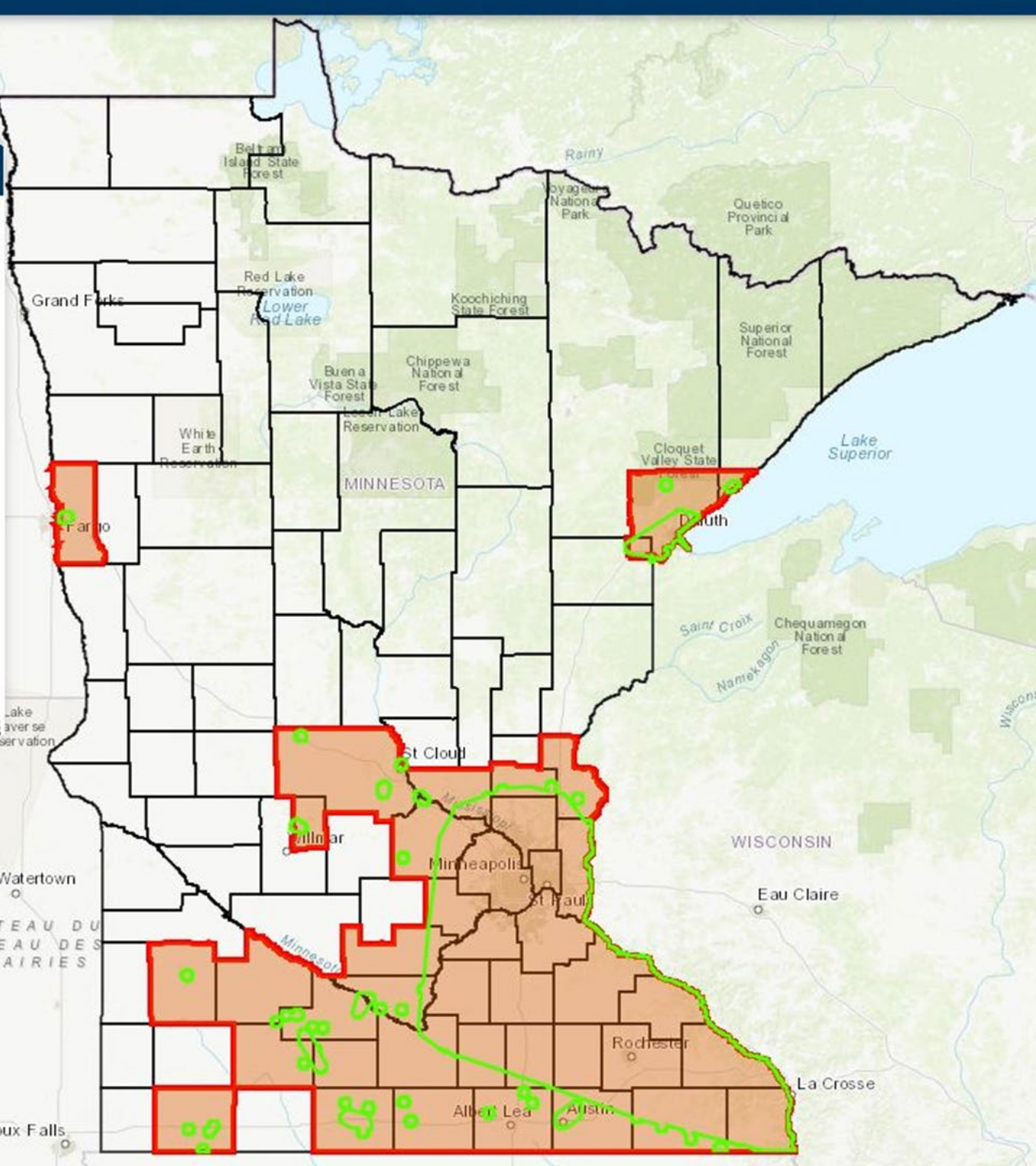


Why is Management Important?

- Maintains health and economic benefits that trees contribute for as long as possible
- Spreads costs over more years, which is easier on city budgets and taxpayers
- Buys time for better methods and solutions

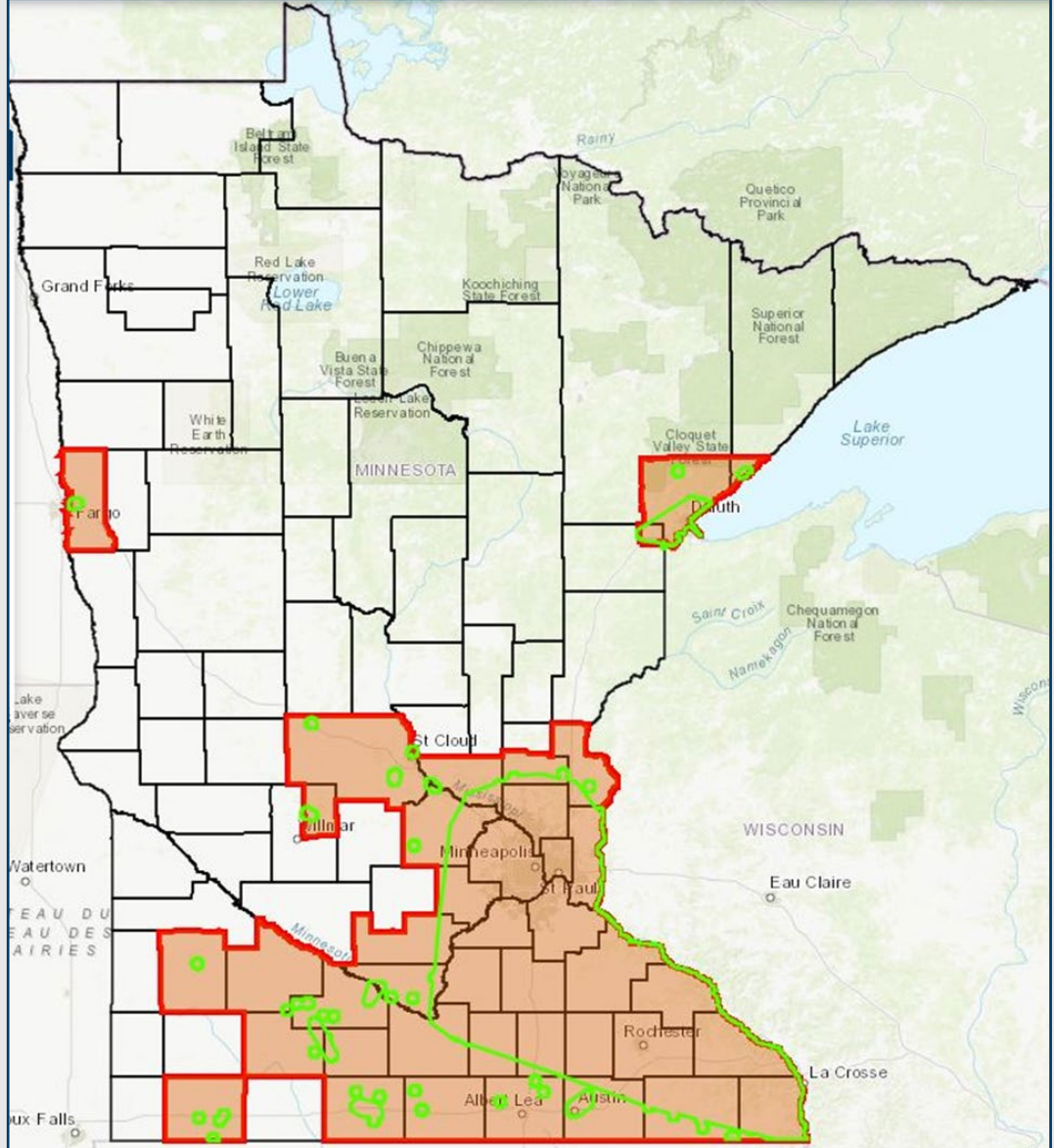
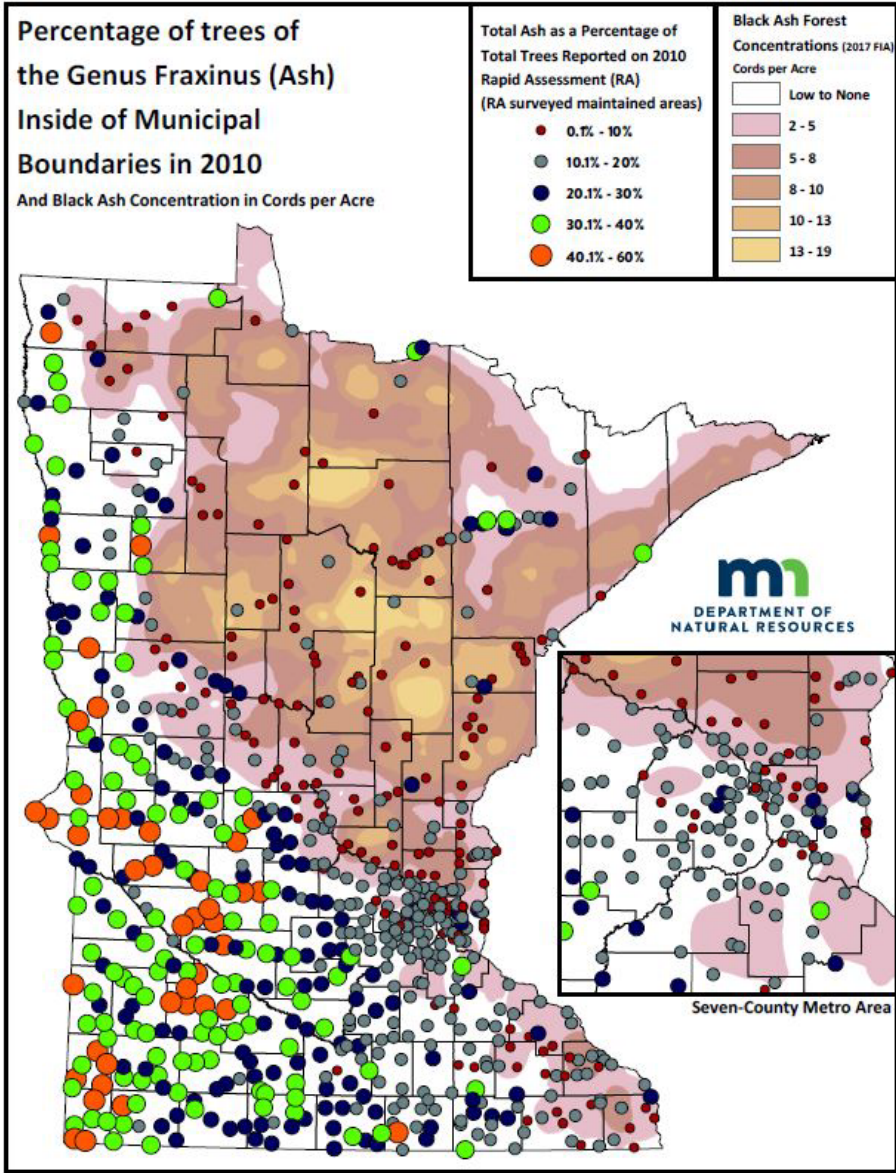


EAB Distribution



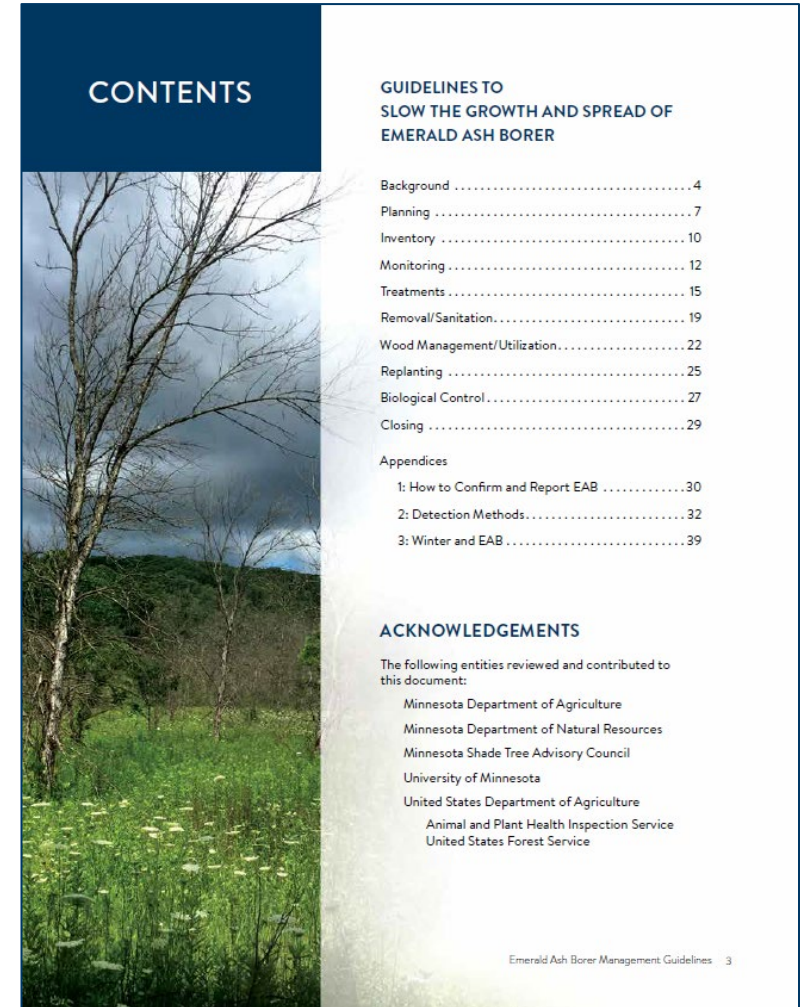
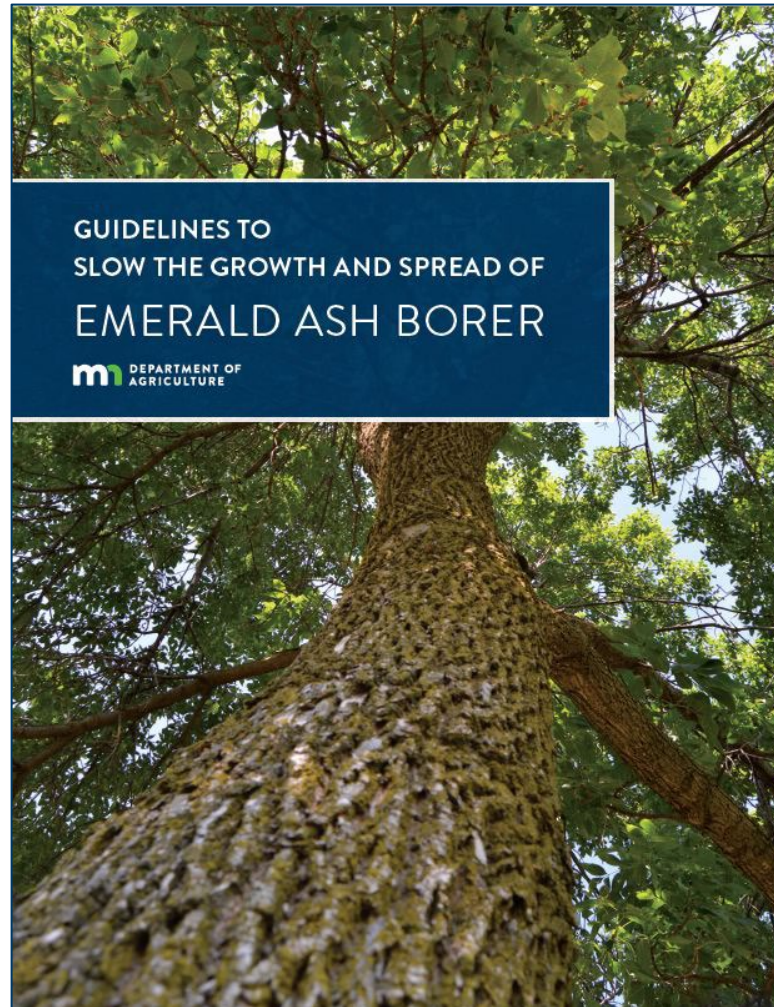
- 41 Counties with EAB infestations detected.
- Map available at www.mda.state.mn.us/eabstatus
- Data available for download at MN Geospatial Commons <https://gisdata.mn.gov/dataset/nv-emerald-ash-borer>

Ash & EAB Distribution



Management Guidelines

- Assists communities in understanding all aspects of managing EAB



Protect Community Forests by Managing Ash for EAB



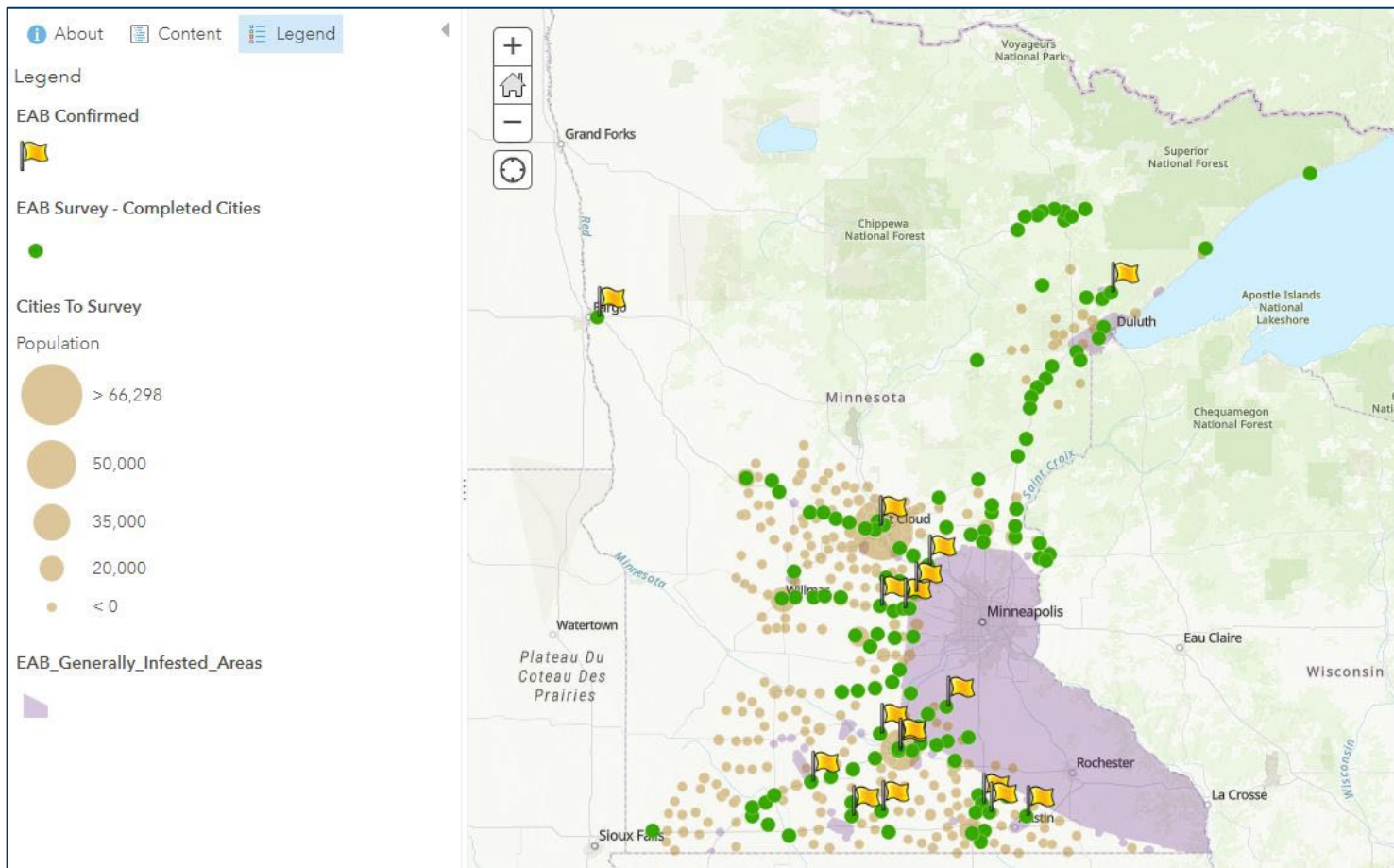
- Provide technical assistance to communities to identify management needs
- Provide monitoring and management workshops
- Assess infestation severity
- Monitor for EAB on the leading edge of infestation
- Funded by



- Train yourself and your staff
 - MDA trains City staff and delimits new EAB-infested cities
 - MDA offers free trainings every winter
 - Video on MDA website and YouTube
 - <https://www.mda.state.mn.us/eab-info-resource-professionals>
 - Contact MDA with any early detection training requests.



Protect Community Forests by Managing Ash for EAB



Survey Results -

- 117 cities completed
- 15 new infestations detected
- Survey efforts will resume in November

Report A Pest

- Take pictures and notes
- Capture the insect or take a sample of the plant
- Report
 - City forester or designated staff
 - EDDMapS
 - www.mda.state.mn.us/reportapest (online form)
 - Reportapest@state.mn.us (email)
 - Call 888-545-6684 and leave a detailed message



Thank You!

Jonathan Osthus, EAB Technical Assistance Coordinator

Jonathan.Osthus@state.mn.us

651-201-6248