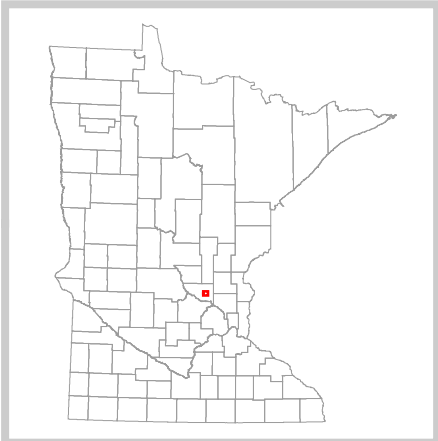
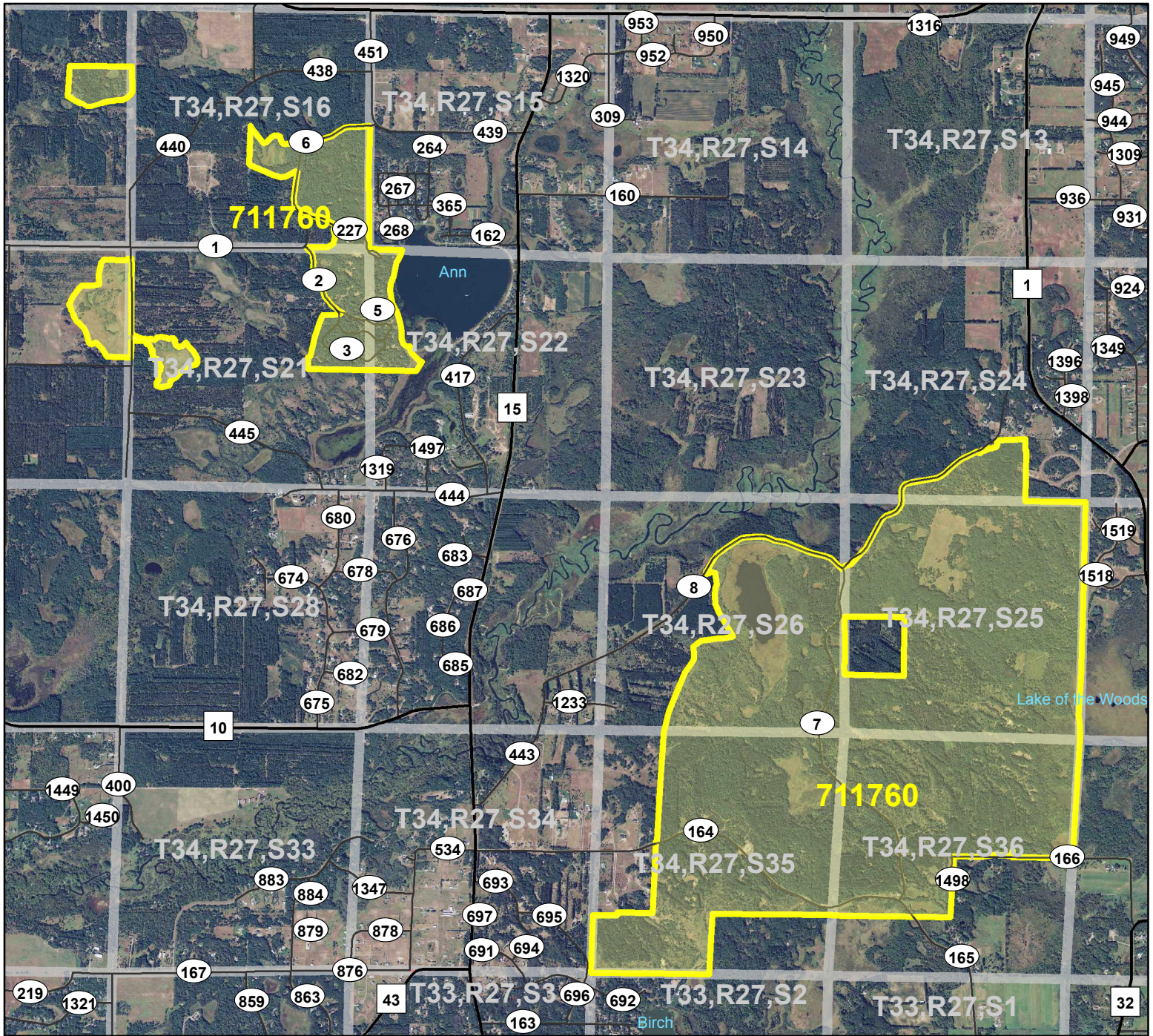




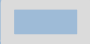


HCVF Site 711760

Sand Dunes State Forest, Sherburne County



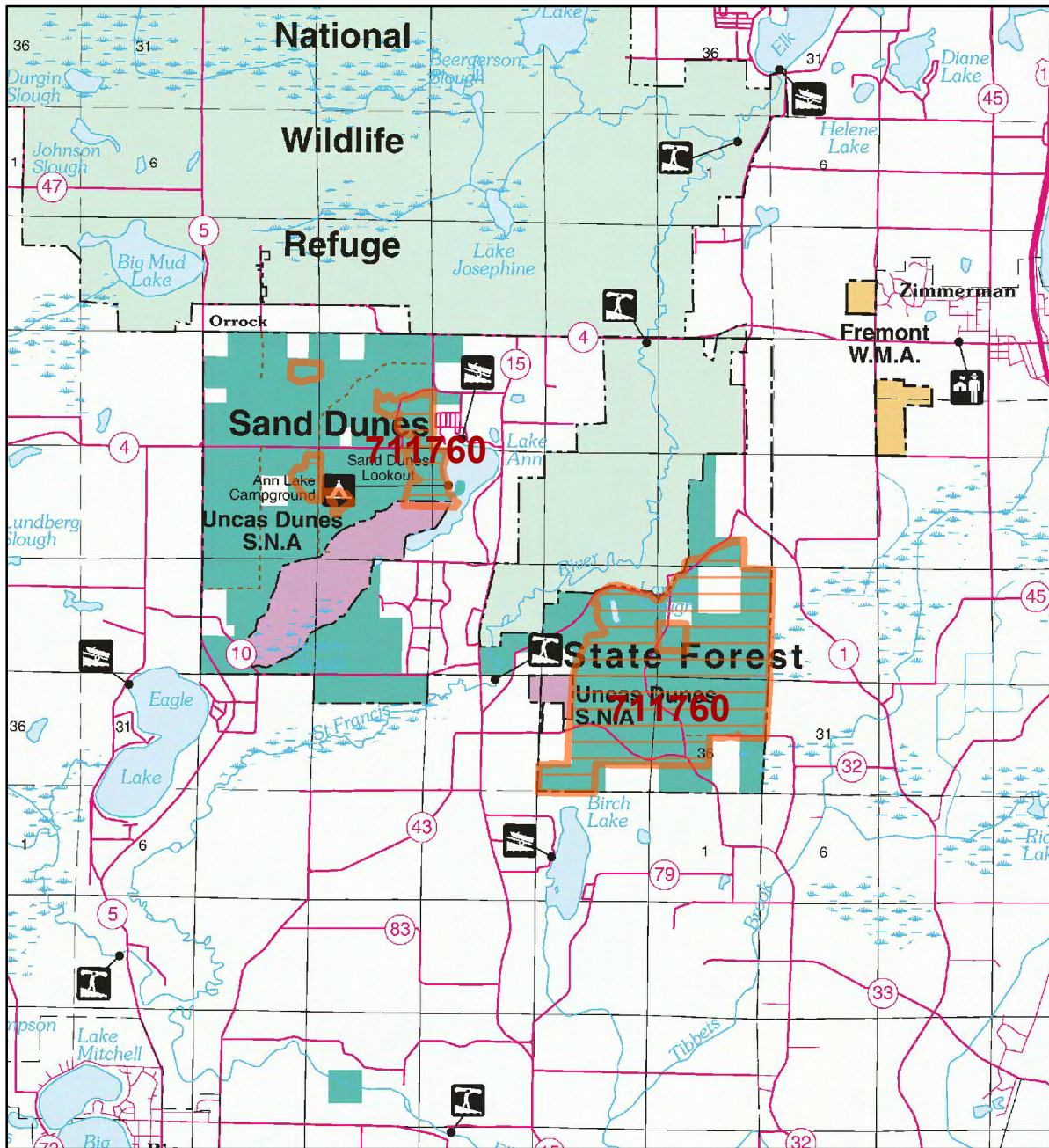
Legend

-  County Highways
-  Municipal, Township or Other Roads
-  Ramps
-  HCVF Site
-  PLS Sections

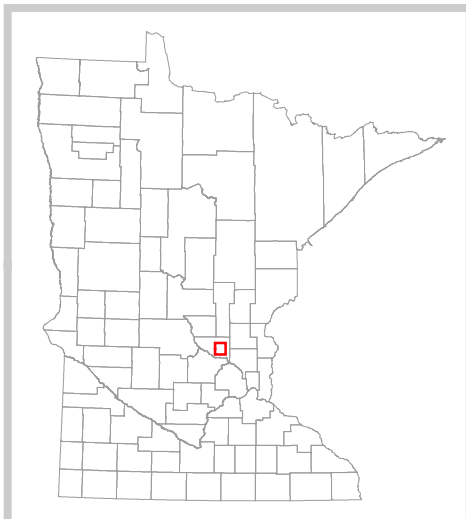


HCVF Site 711760

Sand Dunes State Forest, Sherburne County



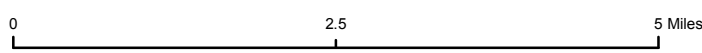
- LEGEND**
- HCVF Site**
- MAP EXPLANATION**
- LAND OWNERSHIP**
- County Land
 - Recreation Area under 40 acres
 - State Forest Land
 - State Park and Recreation Land
 - State Wildlife Management Area Land
 - W.M.A.'s under 40 acres
 - State Scientific & Natural Area Land
 - S.N.A.'s under 40 acres
 - National Waterfowl Production Area
 - N.W.P.A.'s under 40 acres
 - National Forest, Park, Wildlife Refuge & Recreation Land
 - Bureau of Indian Affairs Land
- BOUNDARIES**
- County Unit Boundary
 - State Unit Boundary
 - National Unit Boundary
- TRAILS AND FOREST ROADS**
- State Trail
 - State Forest Road
- DESIGNATED WATERWAYS**
- State Trout Stream
 - State Canoe and Boating Route
 - State Wild, Scenic & Recreational River (also designated Canoe & Boating Route)
 - National Wild, Scenic & Recreational River (also designated Canoe & Boating Route)
- FACILITIES**
- D.N.R. Office
 - Travel Information Center
 - Rest Area (with facilities)
 - Rest Area (limited facilities)
 - Campground
 - Watercraft Camping
 - Equestrian Camping
 - Water Access
 - Carry-in Access
 - Dam (on designated canoe route)
 - Fishing Pier
 - Overlook
 - Parking
 - Historic Site
 - Geologic Feature
 - Fish Hatchery
 - Forestry Nursery
 - National Great River Road
 - State Great River Road
- NOTE: Some of the features defined in this map explanation may not occur on the map.



The PRIM series was developed using funds provided through the Legislative Commission on Minnesota Resources (LCMR).

Base information was compiled from 1:100,000 series U.S. Geologic Survey planimetric maps.

Facility and ownership information was compiled from the following sources: Minnesota Department of Natural Resources, Minnesota Department of Transportation, State Planning Agency, Minnesota Historical Society and the respective counties.



Land ownership categories on this map are in some cases outdated. HCVF sites are on DNR-managed land only; DNR HCVF sites have not been identified on other ownerships.



HCVF Informational Report

Report Run: September 3, 2013

General Information

HCVF #: 711760

HCVF Name: Sand Dunes State Forest

Acres of HCVF site: 2054.53

County: Sherburne

Data edited by: Region 3 HCVF Team

Role: Region 3 HCVF Team

Date edited on: 2013-07-24

Corresponding Land Administrator(s): FOR

Management Unit Name(s) (if applicable): Sand Dunes State Forest

HCVF Summary

This site is located on a matrix of oak savanna and oak woodland on old dune topography. The site varies greatly in quality but include many rare species of animals and plants that depend on savanna and barren habitats. Planted and ingressing pines are shading out these habitats. The site also contains some S3 wetland communities. An operational management guidance document was written to balance both timber and rare species management long-term goals.

HCVs known to be present that factored into HCVF designation.

FSC expects DNR to maintain HCVs within designated HCVFs. Because HCVF boundaries are not the same as the larger, multi-ownership MBS Sites, this list will differ from the values identified during the MBS Survey.

HCV1b (S1 or S2 species): lance-leaved violet (*Viola lanceolata*), annual skeletonweed (*Shinnersoseris rostrata*), Blanding's turtle (*Emydoidea blandingii*), Uncas skipper (*Hesperia uncas*) HCV1e (Rare species concentration): [barrens and sand dunes species]= lance-leaved violet (*Viola lanceolata*), annual skeletonweed (*Shinnersoseris rostrata*), small-leaved pussytoes (*Antennaria parvifolia*), beach-heather (*Hudsonia tomentosa*), creeping juniper (*Juniperus horizontalis*), sea-beach needlegrass (*Aristida tuberculosa*), Blanding's turtle (*Emydoidea blandingii*), Uncas skipper (*Hesperia uncas*), red-shouldered hawk, jumping spider (*Metaphidippus arizonensis*), plains pocket mouse (*Perognathus flavescens*), northern barrens tiger beetle (*Cicindela patruela patruela*), gopher snake (*Pituophis catenifer*), northern myotis (*Myotis septentrionalis*), Leonard's skipper (*Hesperia leonardus leonardus*); HCV1g (Outstanding Key Habitats Examples): oak savanna, dune habitat, non-wetland forest; HCV3a (G1 or G2 plant community): UPs14a, UPs14a2, FPs63a; HCV3b (S1 or S2 plant community): UPs14a2 (7 records from 1989 range from B to CD in quality; 3 records from 2001 range from BC to CD in quality), UPs23a (C rank in 2001), FSs63a (B rank, 1989); HCV3c (Special S3 plant community): OPp91 (C rank in 1989).

Management Considerations

Overall management objectives for the entire HCVF:

Management should follow the guidance given in the "Operational Management Plan for Sand Dunes State Forest," (written by an interdisciplinary team and approved by three DNR divisions) and any subsequent management plan documents. See this website for plan details:
<http://www.dnr.state.mn.us/forestry/subsection/anoka/preliminary.html>.

Management direction from the following sources was considered in developing the above recommendations:

Sand Dunes SF Operational Mgmt. Plan

Are the HCVs within this HCVF likely to benefit from coordination with adjacent landowner(s)?

Yes

This HCVF was flagged by the Regional HCVF Team as warranting cross-ownership coordination efforts. The specific HCVs likely to benefit from such coordination with adjacent landowners are identified below.

There are at least 42 private landowners that surround the HCVF site. In addition, the Uncas Dunes SNA and Sherburne National Wildlife Refuge border some of the site. Many of the HCVs will benefit from management coordination. The SNA and Wildlife Refuge should be key partners in management efforts.

General Comments

The HCVF boundaries follow the immediate and eventual management areas decided upon in the Operational Management Plan for Sand Dunes State Forest.

Reference to rare plants and animals, Minnesota Biological Survey Sites of Biological Significance and mapped native plant communities are records maintained in the Minnesota DNR's Natural Heritage Information System (NHIS). A date of information is associated with each record. The NHIS is continually updated as new information becomes available. The lack of data listed for any geographic area should not be construed to mean that no significant features are present.

... Report End ...