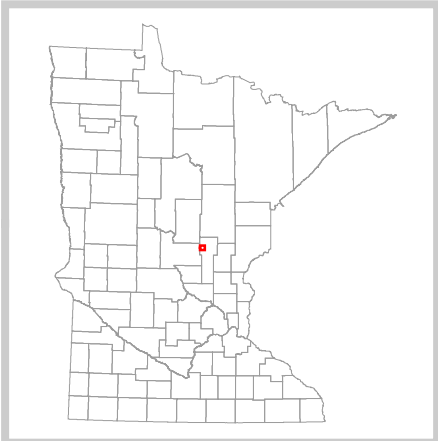
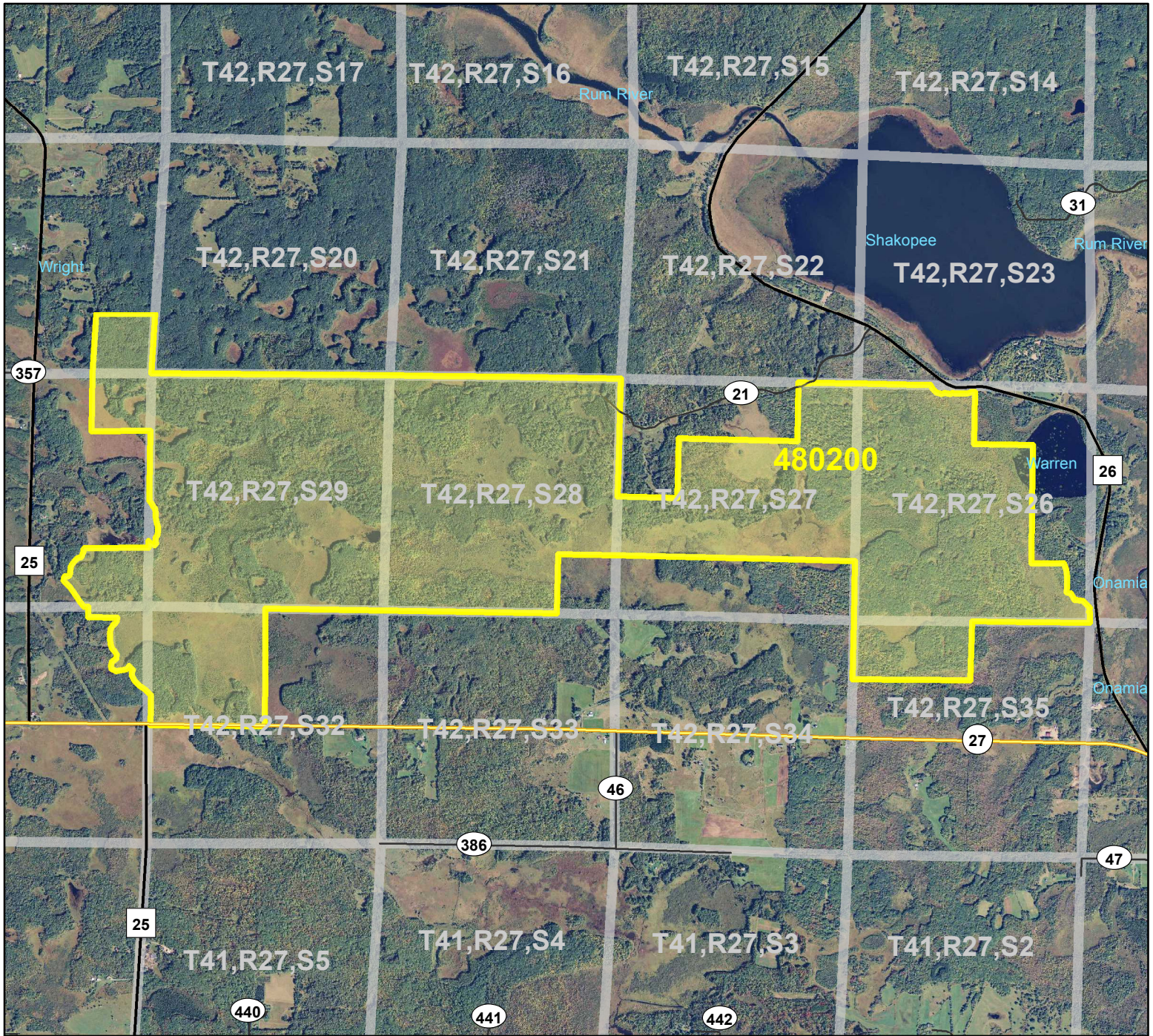


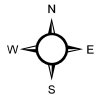
HCVF Site 480200

Rum River State Forest--North Unit, Mille Lacs County



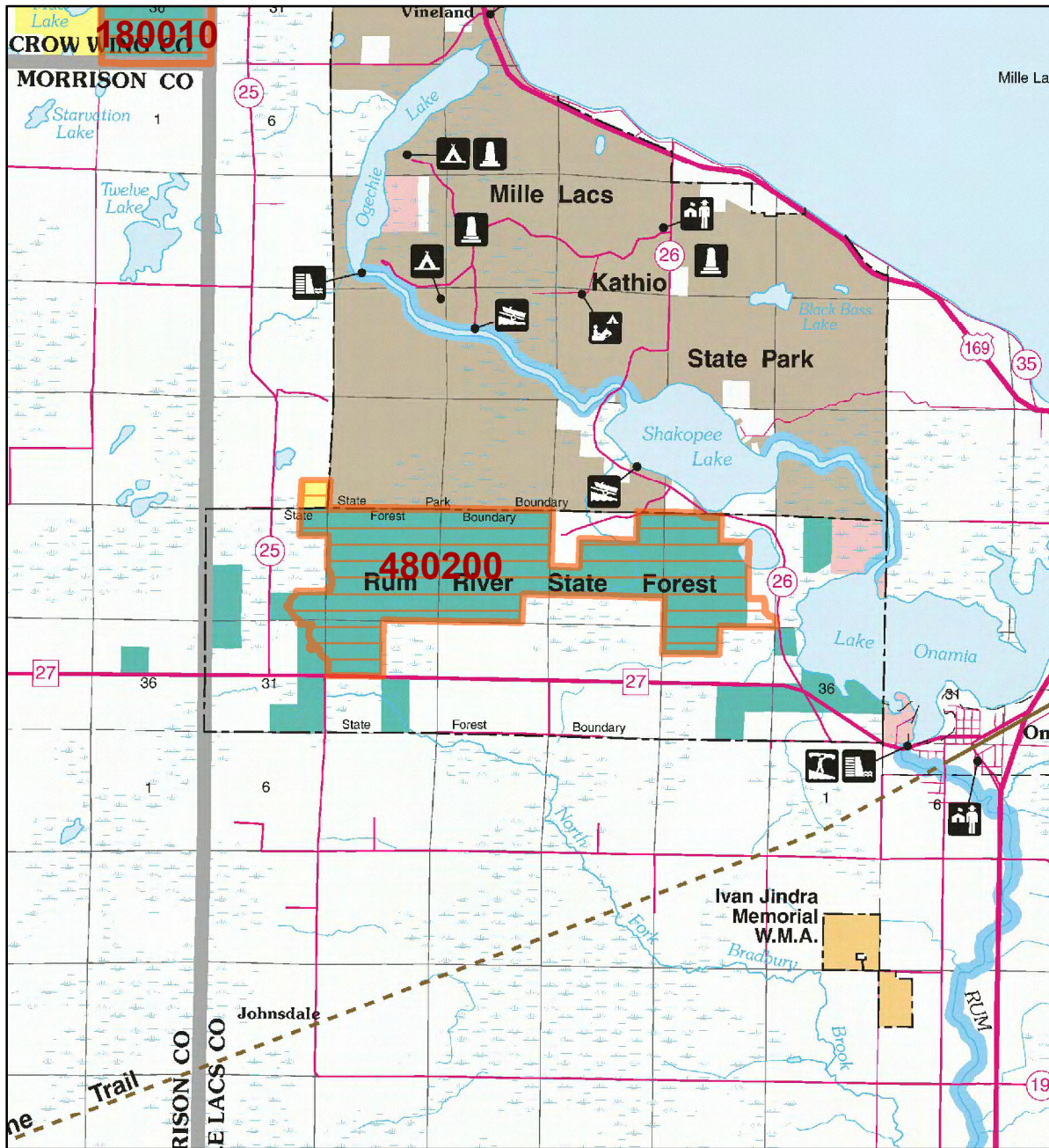
Legend

- State Trunk Highways
- County Highways
- Municipal, Township or Other Roads
- HCVF Site
- PLS Sections



HCVF Site 480200

Rum River State Forest--North Unit, Mille Lacs County



LEGEND

MAP EXPLANATION

LAND OWNERSHIP

- County Land
- Recreation Area under 40 acres
- State Forest Land
- State Park and Recreation Land
- State Wildlife Management Area Land
 - W.M.A.'s under 40 acres
 - S.N.A.'s under 40 acres
- State Scientific & Natural Area Land
 - N.W.P.A.'s under 40 acres
- National Waterfowl Production Area
 - N.W.P.A.'s under 40 acres
- National Forest, Park, Wildlife Refuge & Recreation Land
- Bureau of Indian Affairs Land

BOUNDARIES

- County Unit Boundary
- State Unit Boundary
- National Unit Boundary

TRAILS AND FOREST ROADS

- State Trail
- State Forest Road

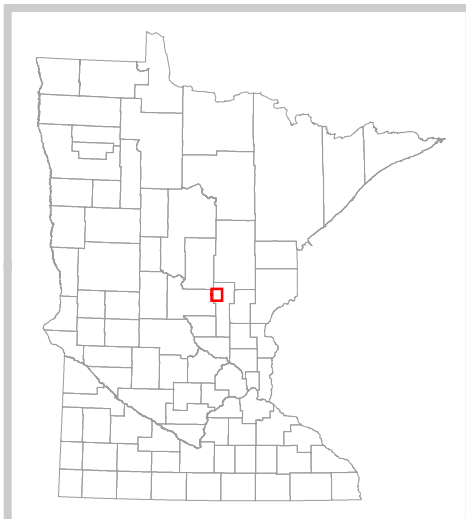
DESIGNATED WATERWAYS

- State Trout Stream
- State Canoe and Boating Route
- State Wild, Scenic & Recreational River (also designated Canoe & Boating Route)
- National Wild, Scenic & Recreational River (also designated Canoe & Boating Route)

FACILITIES

- D.N.R. Office
- Travel Information Center
- Rest Area (with facilities)
- Rest Area (limited facilities)
- Campground
- Watercraft Camping
- Equestrian Camping
- Water Access
- Carry-in Access
- Dam (on designated canoe route)
- Fishing Pier
- Overlook
- Parking
- Historic Site
- Geologic Feature
- Fish Hatchery
- Forestry Nursery
- National Great River Road
- State Great River Road

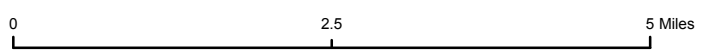
NOTE: Some of the features defined in this map explanation may not occur on the map.



The PRIM series was developed using funds provided through the Legislative Commission on Minnesota Resources (LCMR).

Base information was compiled from 1:100,000 series U.S. Geologic Survey planimetric maps.

Facility and ownership information was compiled from the following sources: Minnesota Department of Natural Resources, Minnesota Department of Transportation, State Planning Agency, Minnesota Historical Society and the respective counties.



Land ownership categories on this map are in some cases outdated. HCVF sites are on DNR-managed land only; DNR HCVF sites have not been identified on other ownerships.



HCVF Informational Report

Report Run: September 3, 2013

General Information

HCVF #: 480200

HCVF Name: Rum River State Forest--North Unit

Acres of HCVF site: 2427.81

County: Mille Lacs

Data edited by: Region 3 HCVF Team

Role: Region 3 HCVF Team

Date edited on: 2013-07-24

Corresponding Land Administrator(s): Forestry

Management Unit Name(s) (if applicable): Rum River State Forest--North Unit

HCVF Summary

There is an even split of wetland and upland acreage. The wetlands are large and interconnected with gently sloped uplands that are scattered throughout, typically as islands within the wetland matrix. The overall native plant communities appear to be in good condition with the wetland communities in nearly pristine condition. The upland forests have varying degrees of forest management activities. This site is contiguous with Mille Lacs Kathio State Park and provides an important buffer to the park. The site includes the headwaters of a small creek that flows into Shakopee Lake. There was limited ground survey completed here and the NPC quality is assumed to be AB-C quality based on photo interpretation.

HCVs known to be present that factored into HCVF designation.

FSC expects DNR to maintain HCVs within designated HCVFs. Because HCVF boundaries are not the same as the larger, multi-ownership MBS Sites, this list will differ from the values identified during the MBS Survey.

HCV1e (Rare species concentration): butternut (*Juglans cinerea*), red-shouldered hawk, bald eagle, other SGCN birds; HCV1g (Outstanding Key Habitats Examples): non-forested wetlands; HCV2-LMFa (Large habitat block): yes both forest and wetland, if adjacent State Park is included (HCVF site is ~2400 ac); HCV3b (S1 or S2 plant community): MRn83; HCV3c (Special S3 plant community): WFn55b [not ranked], FPn72a [not ranked].

Management Considerations

Overall management objectives for the entire HCVF:

Maintain older forest canopy at the landscape level while recruiting and advancing oak regen through prescribed burning, understory & midstory treatments, and harvest. Make sure harvested patches maintain sufficient canopy for the rare bird species that depend on it. Maintain hydrology in wetland native plant communities. Control for invasive species.

Management direction from the following sources was considered in developing the above recommendations:

No information entered.

Are the HCVs within this HCVF likely to benefit from coordination with adjacent landowner(s)?

Yes

This HCVF was flagged by the Regional HCVF Team as warranting cross-ownership coordination efforts. The specific HCVs likely to benefit from such coordination with adjacent landowners are identified below.

There are about 24 private landowners & the Mille Lacs Kathio State Park that surround the HCVF site. The red-shouldered hawk and other SGCN bird species would all benefit from management coordination. Much of the private land is forested or contains wetlands that connect to those in the HCVF site.

General Comments

The HCVF site follows the same boundaries as the MBS sites except that it only encompasses certified state land.

Reference to rare plants and animals, Minnesota Biological Survey Sites of Biological Significance and mapped native plant communities are records maintained in the Minnesota DNR's Natural Heritage Information System (NHIS). A date of information is associated with each record. The NHIS is continually updated as new information becomes available. The lack of data listed for any geographic area should not be construed to mean that no significant features are present.

... Report End ...