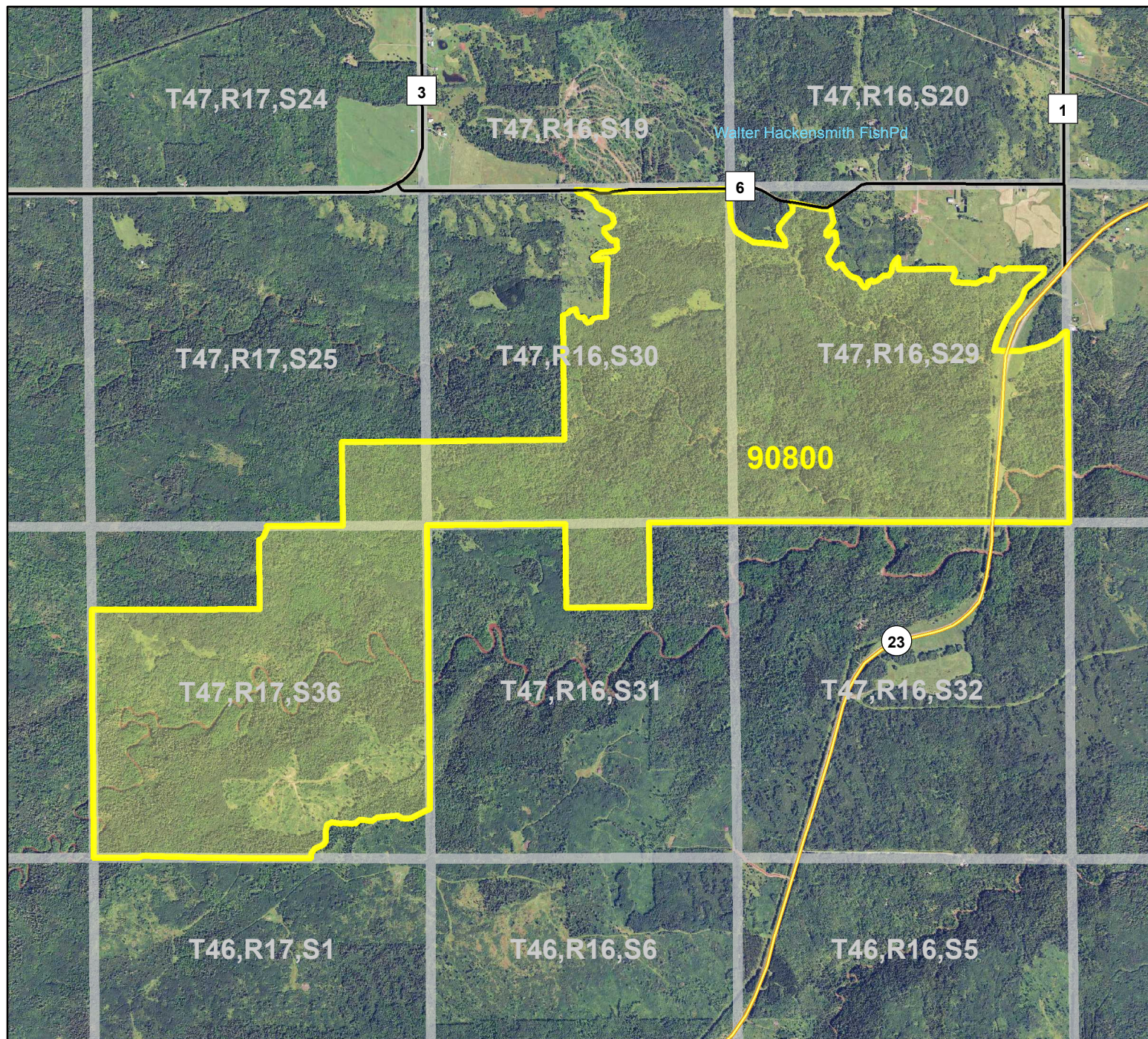


HCVF Site 90800

Blackhoof River WMA, Carlton County



Legend

- State Trunk Highways
- County Highways
- HCVF Site
- PLS Sections

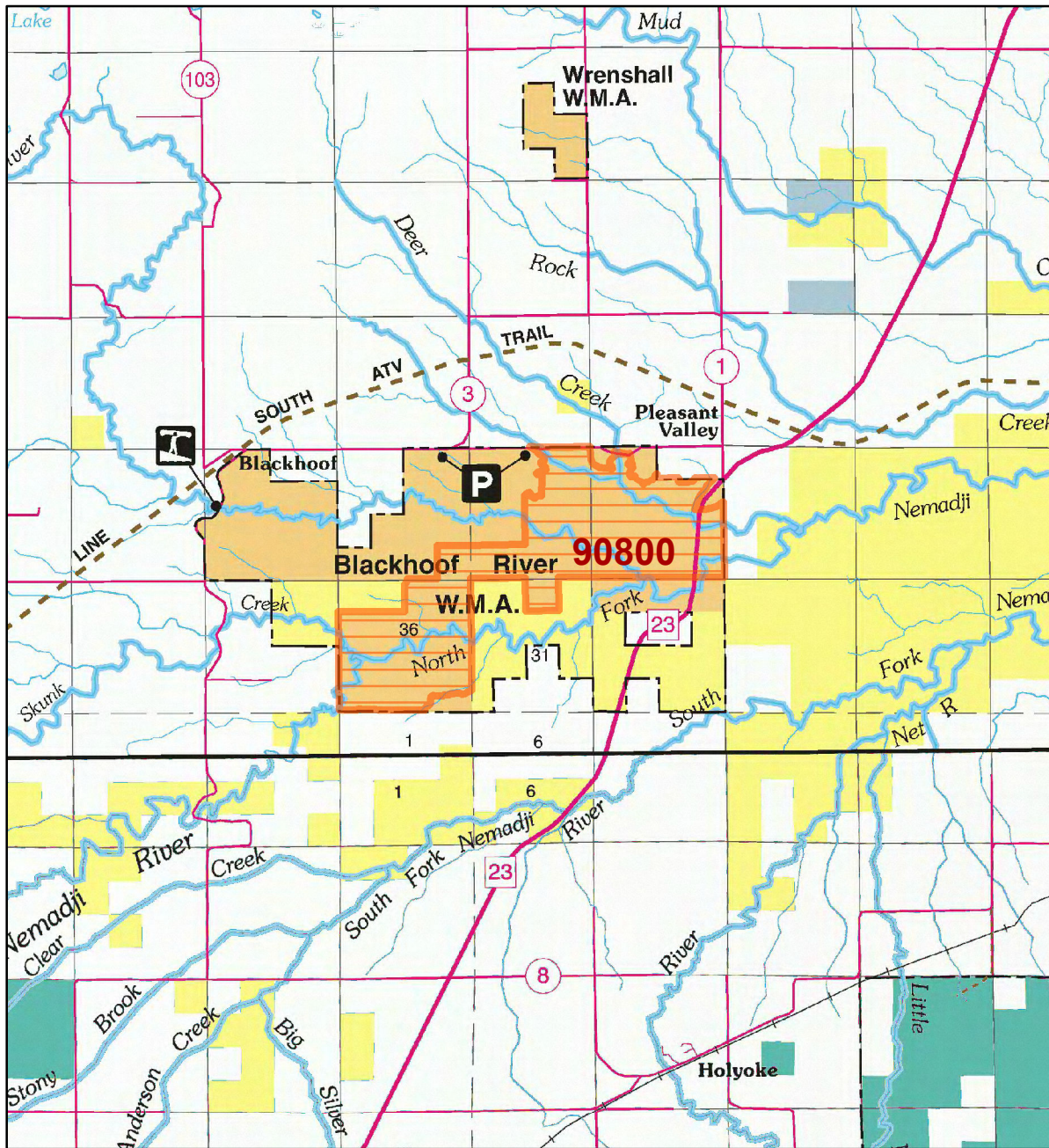


0 0.5 1 Miles

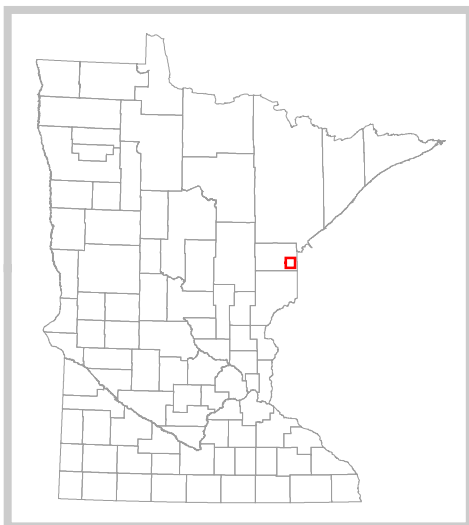


HCVF Site 90800

Blackhoof River WMA, Carlton County



- LEGEND**
- HCVF Site**
- MAP EXPLANATION**
- LAND OWNERSHIP**
- County Land
 - Recreation Area under 40 acres
 - State Forest Land
 - State Park and Recreation Land
 - State Wildlife Management Area Land
 - W.M.A.'s under 40 acres
 - State Scientific & Natural Area Land
 - S.N.A.'s under 40 acres
 - National Waterfowl Production Area
 - N.W.P.A.'s under 40 acres
 - National Forest, Park, Wildlife Refuge & Recreation Land
 - Bureau of Indian Affairs Land
- BOUNDARIES**
- County Unit Boundary
 - State Unit Boundary
 - National Unit Boundary
- TRAILS AND FOREST ROADS**
- State Trail
 - State Forest Road
- DESIGNATED WATERWAYS**
- State Trout Stream
 - State Canoe and Boating Route
 - State Wild, Scenic & Recreational River (also designated Canoe & Boating Route)
 - National Wild, Scenic & Recreational River (also designated Canoe & Boating Route)
- FACILITIES**
- D.N.R. Office
 - Travel Information Center
 - Rest Area (with facilities)
 - Rest Area (limited facilities)
 - Campground
 - Watercraft Camping
 - Equestrian Camping
 - Water Access
 - Carry-in Access
 - Dam (on designated canoe route)
 - Fishing Pier
 - Overlook
 - Parking
 - Historic Site
 - Geologic Feature
 - Fish Hatchery
 - Forestry Nursery
 - National Great River Road
 - State Great River Road
- NOTE: Some of the features defined in this map explanation may not occur on the map.



The PRIM series was developed using funds provided through the Legislative Commission on Minnesota Resources (LCMR).

Base information was compiled from 1:100,000 series U.S. Geologic Survey planimetric maps.

Facility and ownership information was compiled from the following sources: Minnesota Department of Natural Resources, Minnesota Department of Transportation, State Planning Agency, Minnesota Historical Society and the respective counties.



0 2.25 4.5 Miles

Land ownership categories on this map are in some cases outdated. HCVF sites are on DNR-managed land only; DNR HCVF sites have not been identified on other ownerships.



HCVF Informational Report

Report Run: September 3, 2013

General Information

HCVF #: 90800

HCVF Name: Blackhoof River WMA

Acres of HCVF site: 1439.26

County: Carlton

Data edited by: NE HCVF Workgroup

Role: NE HCVF Workgroup

Date edited on: 2013-07-26

Corresponding Land Administrator(s): DNR F&W

Management Unit Name(s) (if applicable): Blackhoof River WMA

HCVF Summary

HCVF site within a 13,052 acre MBS site (09800, Outstanding Biodiversity Significance) centered on the Nemadji River and its numerous tributaries and significant Wood Turtle populations. The HCVF site is entirely within the Blackhoof River WMA; it contains stretches of Skunk Creek, Deer Creek, Nemadji River North Fork, and the Blackhoof River; the Nemadji stretch includes documented Wood Turtle (S2) occurrences. The HCVF site has good landscape context with some of the largest, least fragmented upland forests and shrublands in the Southern Superior Uplands Section although the north and east sides of the HCVF site are bounded by roads. The site is also characterized by high-quality native plant communities, especially on slopes and river terraces (includes designated Old Growth), and minimal recent human disturbance. All the tributaries within the site have a natural course and a significant forested riparian zone. Northern wet-mesic boreal hardwood-conifer forests (MHn44 and MHn46) dominate the landscape with wet ash (WFn) and alder swamps (WFn, FPN) occupying the lower, wetter portions of the flat upland between drainages and northern wet-mesic hardwood forest dominating the river terraces.

HCVs known to be present that factored into HCVF designation.

FSC expects DNR to maintain HCVs within designated HCVFs. Because HCVF boundaries are not the same as the larger, multi-ownership MBS Sites, this list will differ from the values identified during the MBS Survey.

HCV1b (S1 or S2 species): 1 reptile. HCV1f (Taxonomic group concentration): reptile. HCV1g (Outstanding Key Habitats Examples): Forest Upland Deciduous (Aspen) (MHn44a), Forest Upland Deciduous (Mixed hardwood-conifer) (MHn44c), River " Headwater to Large (Blackhoof River and Nemadji North Fork River). HCV2-LMFa (Large habitat block): upland forest with wetland. HCV3c (Special S3 plant community): RVx54b2. HCV3e (Old-growth forest): 44 acres combined white spruce and ash. HCV3f (Primary forest): yes.

Management Considerations

Overall management objectives for the entire HCVF:

Maintain/enhance forest and river features important for wood turtles; develop DNR Wood Turtle guidelines that meet HCVF standards. Apply MFRC SLG Trout Stream guidelines as a surrogate for addressing rare mussels and the river's maintenance/enhancement as viable habitat (river is also a trout stream). Silvicultural prescriptions in Key Habitat or rare native plant communities maintains or enhances the floristic, structural, and spatial components that define the native plant community; see SRM Objective code CON1. Silviculture in these native plant community types either aims to prolong an existing native plant community growth stage or complement a transition to the next older growth stage. Apply DNR HCV General Landscape Guidance. Avoid management activity in RVx54b2 due to slumping clay soils on slopes. Field evaluate primary forest. Revisit historical hemlock location. Nongame review site for goshawk significance.

Management direction from the following sources was considered in developing the above recommendations:

MLU SFRMP

Are the HCVs within this HCVF likely to benefit from coordination with adjacent landowner(s)?

Yes

This HCVF was flagged by the Regional HCVF Team as warranting cross-ownership coordination efforts. The specific HCVs likely to benefit from such coordination with adjacent landowners are identified below.

Carlton County FSC certified but has not yet designated HCVF in the SSU.

General Comments

No information entered.

Reference to rare plants and animals, Minnesota Biological Survey Sites of Biological Significance and mapped native plant communities are records maintained in the Minnesota DNR's Natural Heritage Information System (NHIS). A date of information is associated with each record. The NHIS is continually updated as new information becomes available. The lack of data listed for any geographic area should not be construed to mean that no significant features are present.

... Report End ...