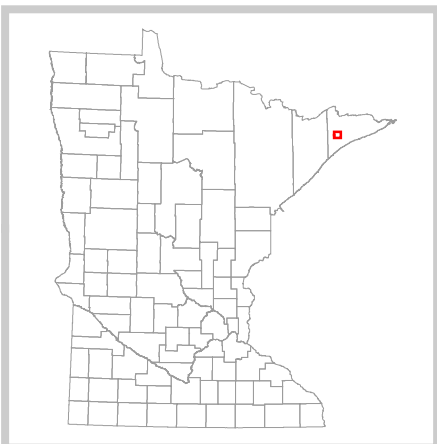
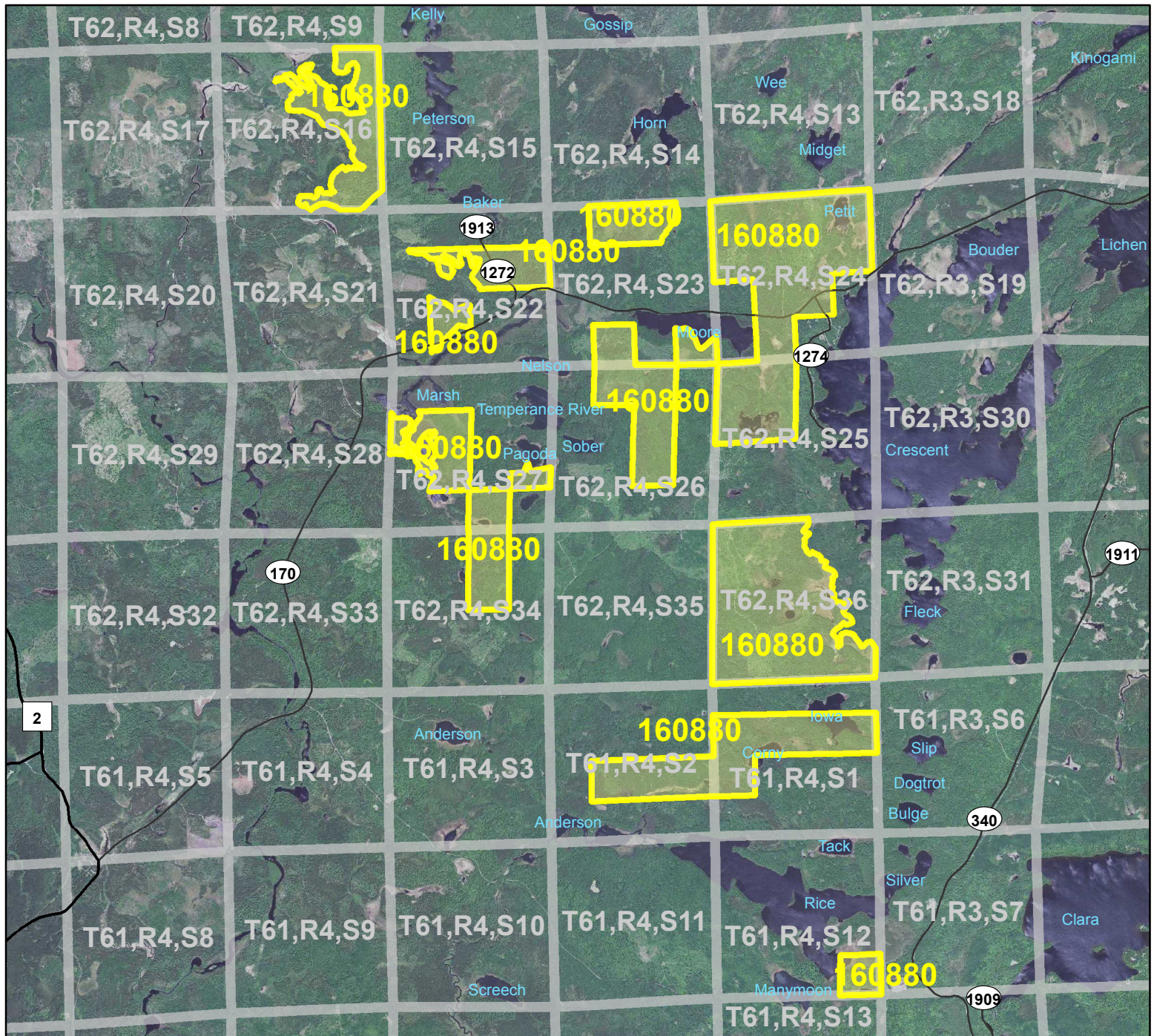


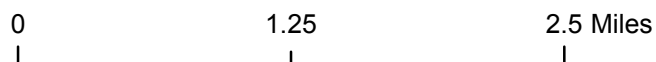
HCVF Site 160880

Temperance Pines, Cook County



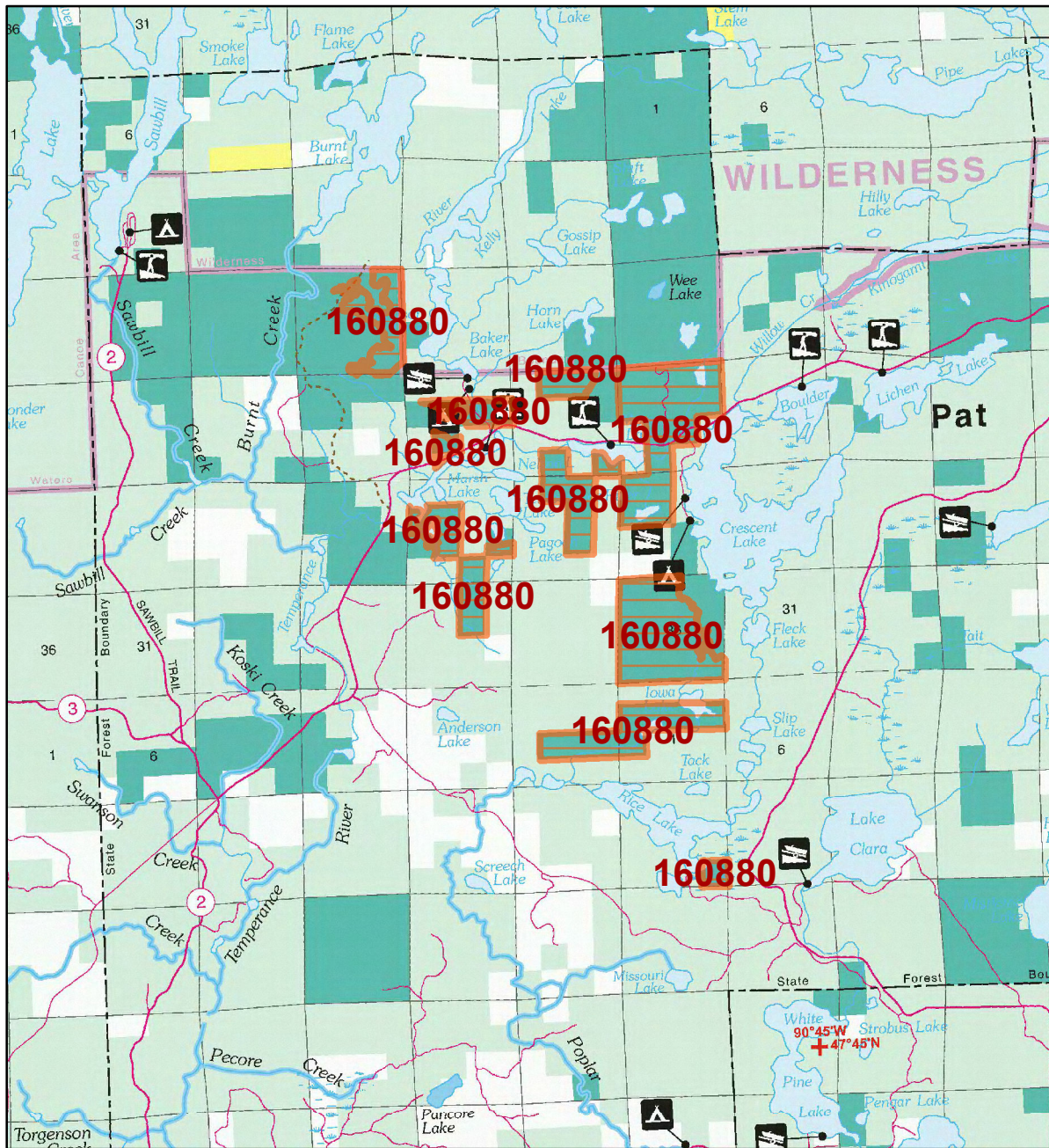
Legend

- County Highways
- Municipal, Township or Other Roads
- HCVF Site
- PLS Sections



HCVF Site 160880

Temperance Pines, Cook County



LEGEND

HCVF Site

MAP EXPLANATION

LAND OWNERSHIP

- County Land
- Recreation Area under 40 acres
- State Forest Land
- State Park and Recreation Land
- State Wildlife Management Area Land
- W.M.A.'s under 40 acres
- State Scientific & Natural Area Land
- S.N.A.'s under 40 acres
- National Waterfowl Production Area
- N.W.P.A.'s under 40 acres
- National Forest, Park, Wildlife Refuge & Recreation Land
- Bureau of Indian Affairs Land

BOUNDARIES

- County Unit Boundary
- State Unit Boundary
- National Unit Boundary

TRAILS AND FOREST ROADS

- State Trail
- State Forest Road

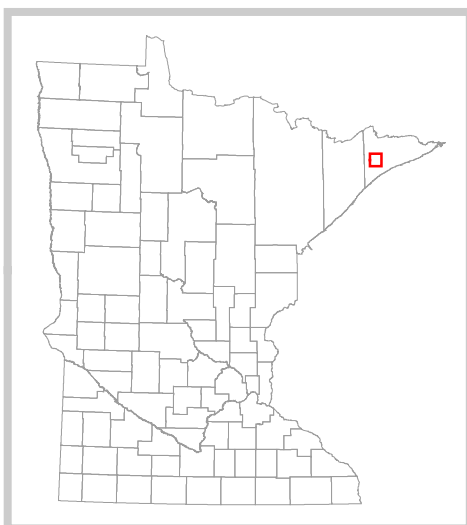
DESIGNATED WATERWAYS

- State Trout Stream
- State Canoe and Boating Route
- State Wild, Scenic & Recreational River (also designated Canoe & Boating Route)
- National Wild, Scenic & Recreational River (also designated Canoe & Boating Route)

FACILITIES

- D.N.R. Office
- Travel Information Center
- Rest Area (with facilities)
- Rest Area (limited facilities)
- Campground
- Watercraft Camping
- Equestrian Camping
- Water Access
- Carry-in Access
- Dam (on designated canoe route)
- Fishing Pier
- Overlook
- Parking
- Historic Site
- Geologic Feature
- Fish Hatchery
- Forestry Nursery
- National Great River Road
- State Great River Road

NOTE: Some of the features defined in this map explanation may not occur on the map.



The PRIM series was developed using funds provided through the Legislative Commission on Minnesota Resources (LCMR).

Base information was compiled from 1:100,000 series U.S. Geologic Survey planimetric maps.

Facility and ownership information was compiled from the following sources: Minnesota Department of Natural Resources, Minnesota Department of Transportation, State Planning Agency, Minnesota Historical Society and the respective counties.



0 2.75 5.5 Miles

Land ownership categories on this map are in some cases outdated. HCVF sites are on DNR-managed land only; DNR HCVF sites have not been identified on other ownerships.



HCVF Informational Report

Report Run: September 3, 2013

General Information

HCVF #: 160880

HCVF Name: Temperance Pines

Acres of HCVF site: 2303.54

County: Cook

Data edited by: NE HCVF Workgroup

Role: NE HCVF Workgroup

Date edited on: 2013-07-26

Corresponding Land Administrator(s): DNR Forestry

Management Unit Name(s) (if applicable): Pat Bayle State Forest

HCVF Summary

HCVF site within two MBS sites totaling 12,413 acres (16098, High Biodiversity Sign.; 16088, High Biodiversity Sign.). The MBS sites and State HCVF acres encompass what remains of one of the two large red and white pineries in the Laurentian Uplands subsection (the other in Isabella area in Lake County). Some State HCVF parcels border the BWCAW and highly ranked MBS sites within the BWCAW. FDn43 is the dominant upland forest class. Significant amounts of FDn43a (S2) including 643 acres of DNR designated OG, 58 acres of DNR nominated OG, and ~500 acres of adjacent federal lands evaluated as old-growth pine forest. Most of MBS site is USFS. State lands include some lakeshore, river, and interconnecting, typically forested, wetlands.

HCVs known to be present that factored into HCVF designation.

FSC expects DNR to maintain HCVs within designated HCVFs. Because HCVF boundaries are not the same as the larger, multi-ownership MBS Sites, this list will differ from the values identified during the MBS Survey.

HCV1g (Outstanding Key Habitats Examples): Upland Conifer. HCV2-LMFa (Large habitat block): yes. HCV2-LMFbi (late-successional forest block): potential exists. HCV2-LMFbii (blocks with rare species): yes. HCV3b (S1 or S2 plant community): FDn43a. HCV3c (Special S3 plant community): yes. HCV3d (Natural origin pine stand): yes. HCV3e (Old-growth forest): 520 acres combined NH, white pine, red pine. HCV3f (Primary forest): yes.

Management Considerations

Overall management objectives for the entire HCVF:

Maintain/enhance existing natural origin pine as a component within the forest matrix, enhance natural origin pine regeneration. Silvicultural prescriptions in Key Habitat native plant communities maintains or enhances the floristic, structural, and spatial components that define the native plant community; see SRM Objective code CON1. Silviculture in FDn43a occurrences prolongs the existing growth stage or assists a transition to the next older growth stage. Field verify primary forest occurrences. Apply DNR HCV General Landscape Guidance. Designated pine old growth is high priority for school trust compensation.

Management direction from the following sources was considered in developing the above recommendations:

NTL SFRMP; USFS SNF Forest Plan; MFRC NE Landscape Plan

Are the HCVs within this HC VF likely to benefit from coordination with adjacent landowner(s)?
Yes

This HC VF was flagged by the Regional HC VF Team as warranting cross-ownership coordination efforts. The specific HCVs likely to benefit from such coordination with adjacent landowners are identified below.

USFS

General Comments

No information entered.

Reference to rare plants and animals, Minnesota Biological Survey Sites of Biological Significance and mapped native plant communities are records maintained in the Minnesota DNR's Natural Heritage Information System (NHIS). A date of information is associated with each record. The NHIS is continually updated as new information becomes available. The lack of data listed for any geographic area should not be construed to mean that no significant features are present.

... Report End ...