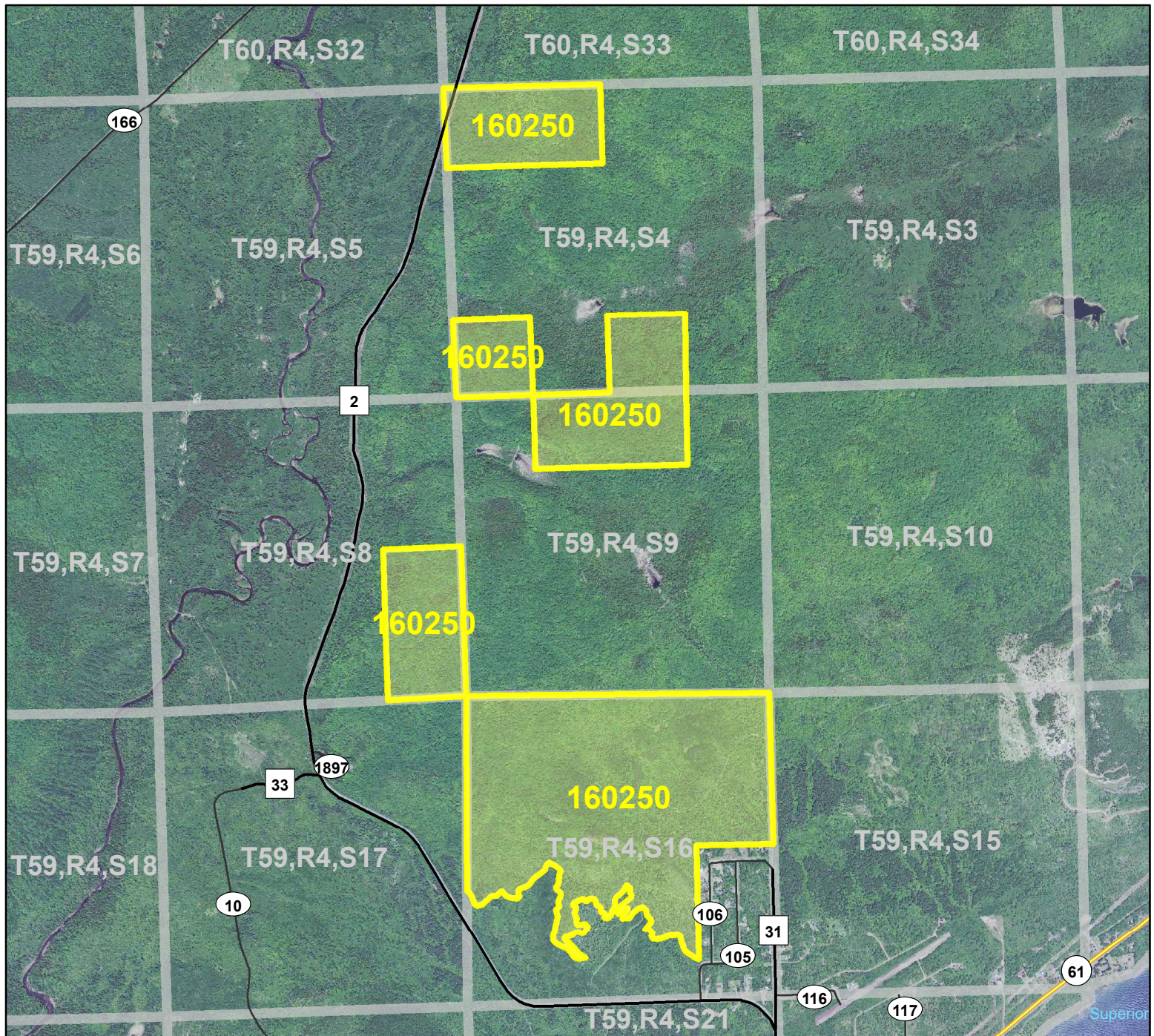


# HCVF Site 160250

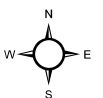
## Onion River Hardwoods, Cook County



### Legend

- State Trunk Highways
- County Highways
- Municipal, Township or Other Roads
- HCVF Site

PLS Sections



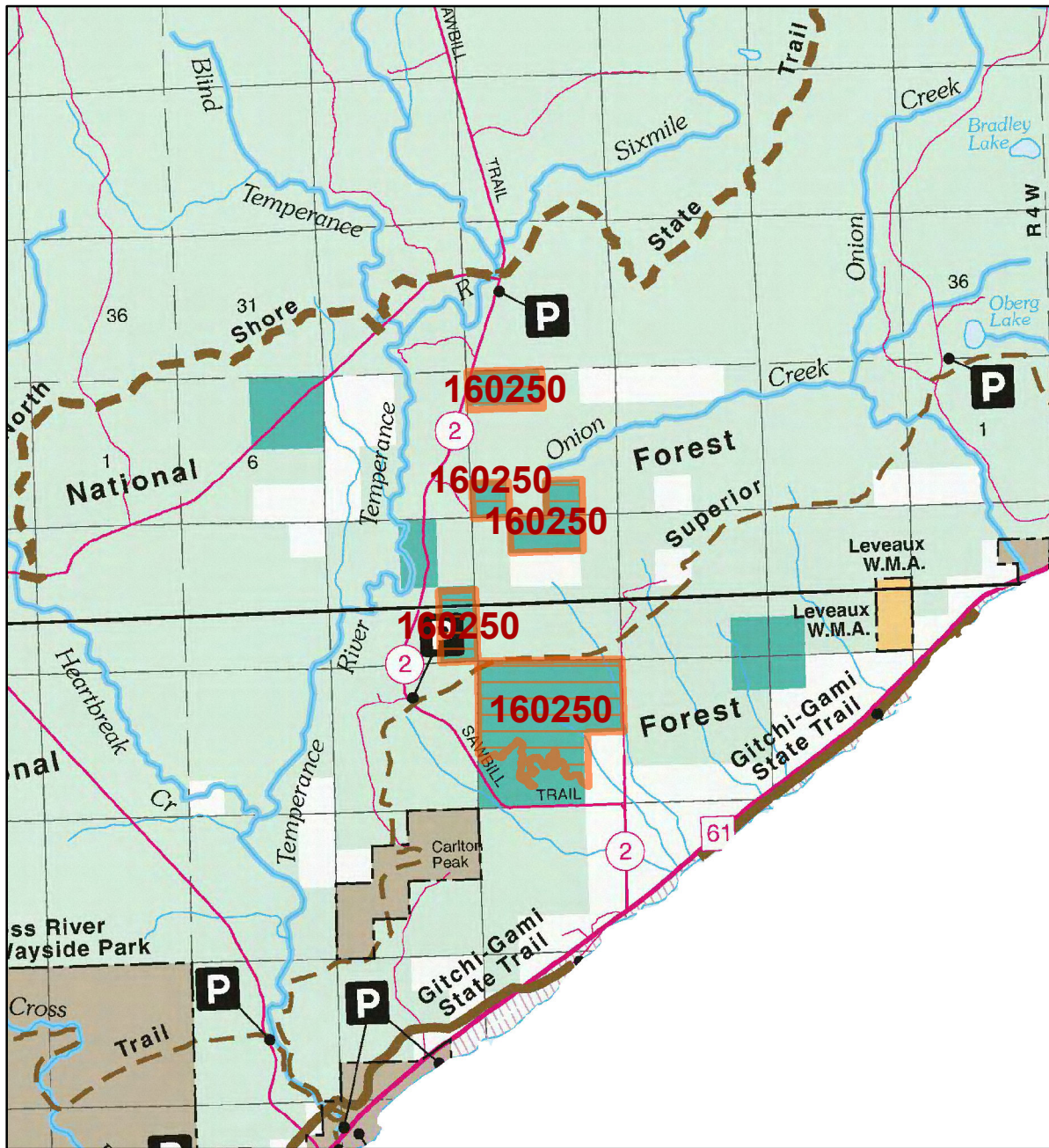
0 0.75 1.5 Miles



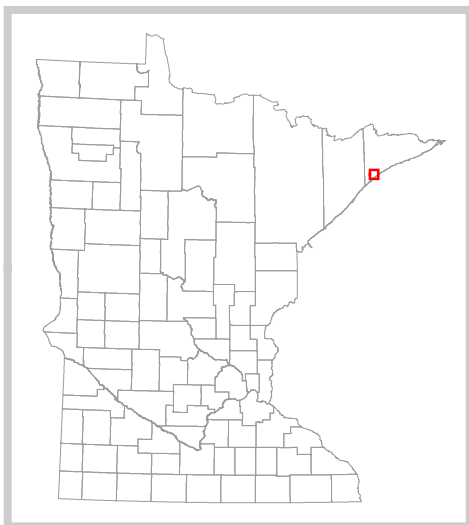


# HCVF Site 160250

## Onion River Hardwoods, Cook County



- LEGEND**
- MAP EXPLANATION**
- LAND OWNERSHIP**
- County Land
  - Recreation Area under 40 acres
  - State Forest Land
  - State Park and Recreation Land
  - State Wildlife Management Area Land
  - W.M.A.'s under 40 acres
  - State Scientific & Natural Area Land
  - S.N.A.'s under 40 acres
  - National Waterfowl Production Area
  - N.W.P.A.'s under 40 acres
  - National Forest, Park, Wildlife Refuge & Recreation Land
  - Bureau of Indian Affairs Land
- BOUNDARIES**
- County Unit Boundary
  - State Unit Boundary
  - National Unit Boundary
- TRAILS AND FOREST ROADS**
- State Trail
  - State Forest Road
- DESIGNATED WATERWAYS**
- State Trout Stream
  - State Canoe and Boating Route
  - State Wild, Scenic & Recreational River (also designated Canoe & Boating Route)
  - National Wild, Scenic & Recreational River (also designated Canoe & Boating Route)
- FACILITIES**
- D.N.R. Office
  - Travel Information Center
  - Rest Area (with facilities)
  - Rest Area (limited facilities)
  - Campground
  - Watercraft Camping
  - Equestrian Camping
  - Water Access
  - Carry-in Access
  - Dam (on designated canoe route)
  - Fishing Pier
  - Overlook
  - Parking
  - Historic Site
  - Geologic Feature
  - Fish Hatchery
  - Forestry Nursery
  - National Great River Road
  - State Great River Road
- NOTE: Some of the features defined in this map explanation may not occur on the map.



The PRIM series was developed using funds provided through the Legislative Commission on Minnesota Resources (LCMR).

Base information was compiled from 1:100,000 series U.S. Geologic Survey planimetric maps.

Facility and ownership information was compiled from the following sources: Minnesota Department of Natural Resources, Minnesota Department of Transportation, State Planning Agency, Minnesota Historical Society and the respective counties.



0 2 4 Miles

Land ownership categories on this map are in some cases outdated. HCVF sites are on DNR-managed land only; DNR HCVF sites have not been identified on other ownerships.



# HCVF Informational Report

Report Run: September 3, 2013

## General Information

**HCVF #: 160250**

**HCVF Name:** Onion River Hardwoods

**Acres of HCVF site:** 738.00

**County:** Cook

**Data edited by:** NE HCVF Workgroup

**Role:** NE HCVF Workgroup

**Date edited on:** 2013-07-26

**Corresponding Land Administrator(s):** DNR Forestry

**Management Unit Name(s) (if applicable):** Scattered lands

## HCVF Summary

Within a 12,126 MBS site (160250 - Onion River Hardwoods) with outstanding examples of high- quality, old-growth sugar maple forests and North Shore river systems within a landscape of rugged terrain in the scoured, igneous bedrock-controlled, northern hardwoods-dominated uplands of the Tettegouche Till Plain. The State HCVF acres here anchor the SW end of two large MBS sites of outstanding biodiversity significance: the Onion River Hardwoods site and site 160220, Poplar Agnes Hardwoods that also has State HCVF acres. State HCVF acres include 160 acres of designated NH and upland cedar old growth and outstanding examples of MHn45b (S2) and MHn45c (S3).

### **HCVs known to be present that factored into HCVF designation.**

*FSC expects DNR to maintain HCVs within designated HCVFs. Because HCVF boundaries are not the same as the larger, multi-ownership MBS Sites, this list will differ from the values identified during the MBS Survey.*

HCV1e (Rare species concentration: SGCN birds. HCV2-LMFa (Large habitat block): upland forest matrix. HCV3a (G1 or G2 plant community): MHn45b. HCV2-LMFbi (late-successional forest block): potential exists. HCV2-LMFbii (blocks with rare species): potential exists. HCV3b (S1 or S2 plant community): MHn45b. HCV3c (Special S3 plant community): FDn43c, MHn45c. HCV3e (Old-growth forest): 160 acres NH and cedar. HCV3f (Primary forest): yes.

## Management Considerations

**Overall management objectives for the entire HCVF:**

Engage with the North Shore Forest Collaborative for coordinated management across ownerships to effectively address HCVs on State HCVF parcels. For MHN45b occurrences follow direction per DNR G1 & G2 Imperiled Communities Memo, June 30, 2010. Silvicultural treatments in S3 native plant communities maintains or enhances the floristic, structural, and spatial components that define the native plant community; see SRM Objective code CON1. Field verify potential primary forest occurrences. Apply DNR HCV General Landscape Guidance.

**Management direction from the following sources was considered in developing the above recommendations:**

NTL SFRMP; MFRC NE Landscape Plan; North Shore Forest Collaborative; DNR Ecological Evaluation; DNR SNA management plan.

**Are the HCVs within this HCVF likely to benefit from coordination with adjacent landowner(s)?**

\_Yes\_

*This HCVF was flagged by the Regional HCVF Team as warranting cross-ownership coordination efforts. The specific HCVs likely to benefit from such coordination with adjacent landowners are identified below.*

USFS; North Shore Forest Collaborative.

## General Comments

USFS SNF Forest Plan Management Emphasis: Recreational use in a scenic landscape. North Shore Collaborative ideas: application of DNR HCVF general landscape guidance applied across ownerships. The site's value as a regionally significant bird concentrat

*Reference to rare plants and animals, Minnesota Biological Survey Sites of Biological Significance and mapped native plant communities are records maintained in the Minnesota DNR's Natural Heritage Information System (NHIS). A date of information is associated with each record. The NHIS is continually updated as new information becomes available. The lack of data listed for any geographic area should not be construed to mean that no significant features are present.*

... Report End ...