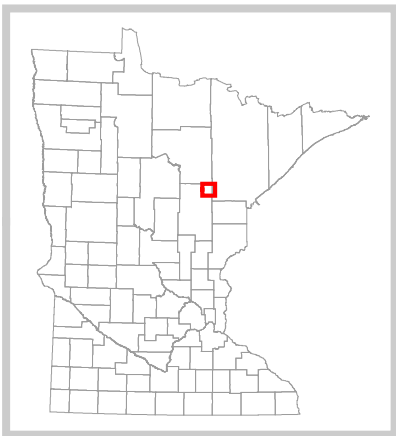
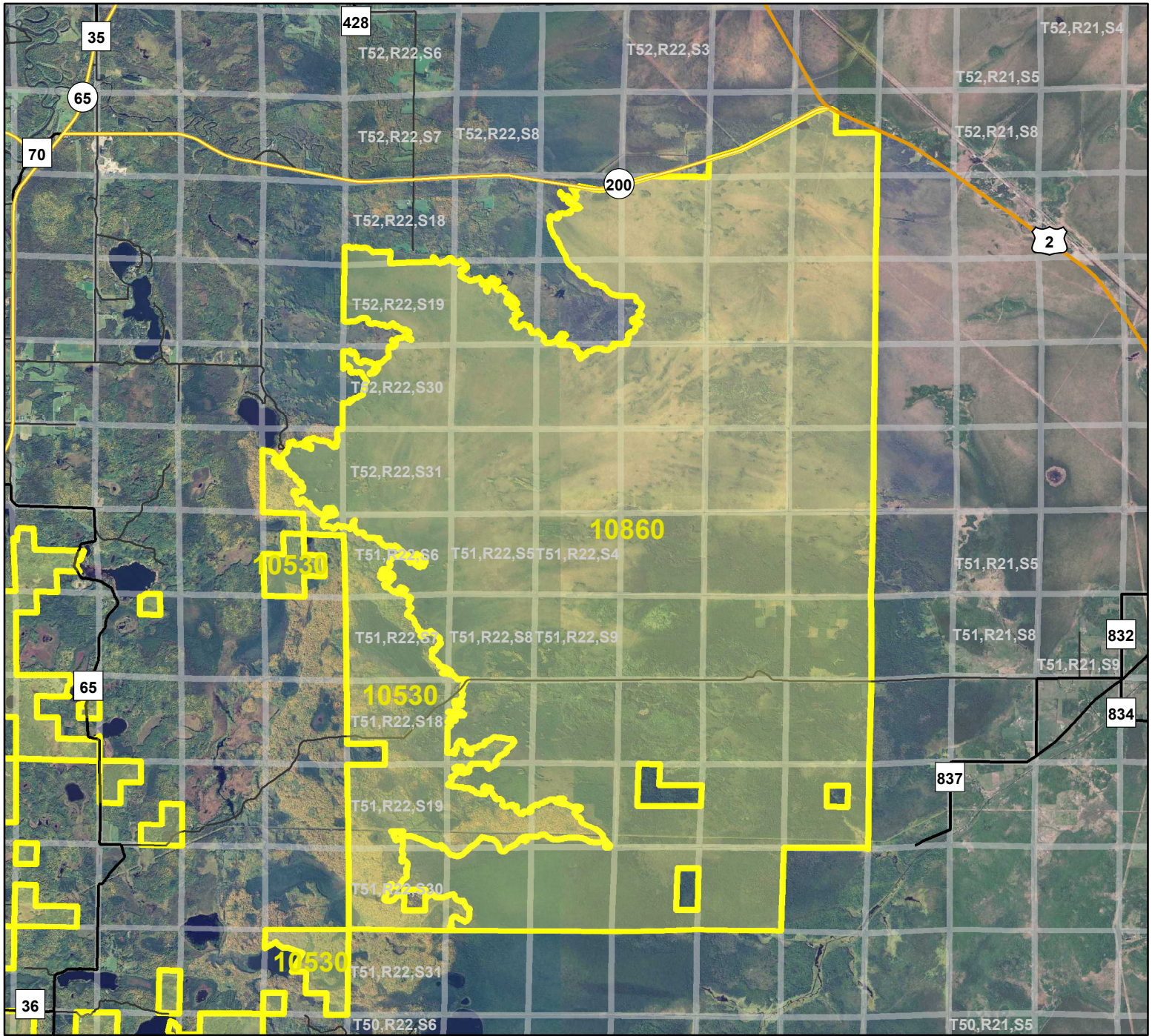


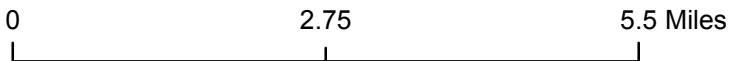
HCVF Site 10860

Floodwood Bog, Aitkin County



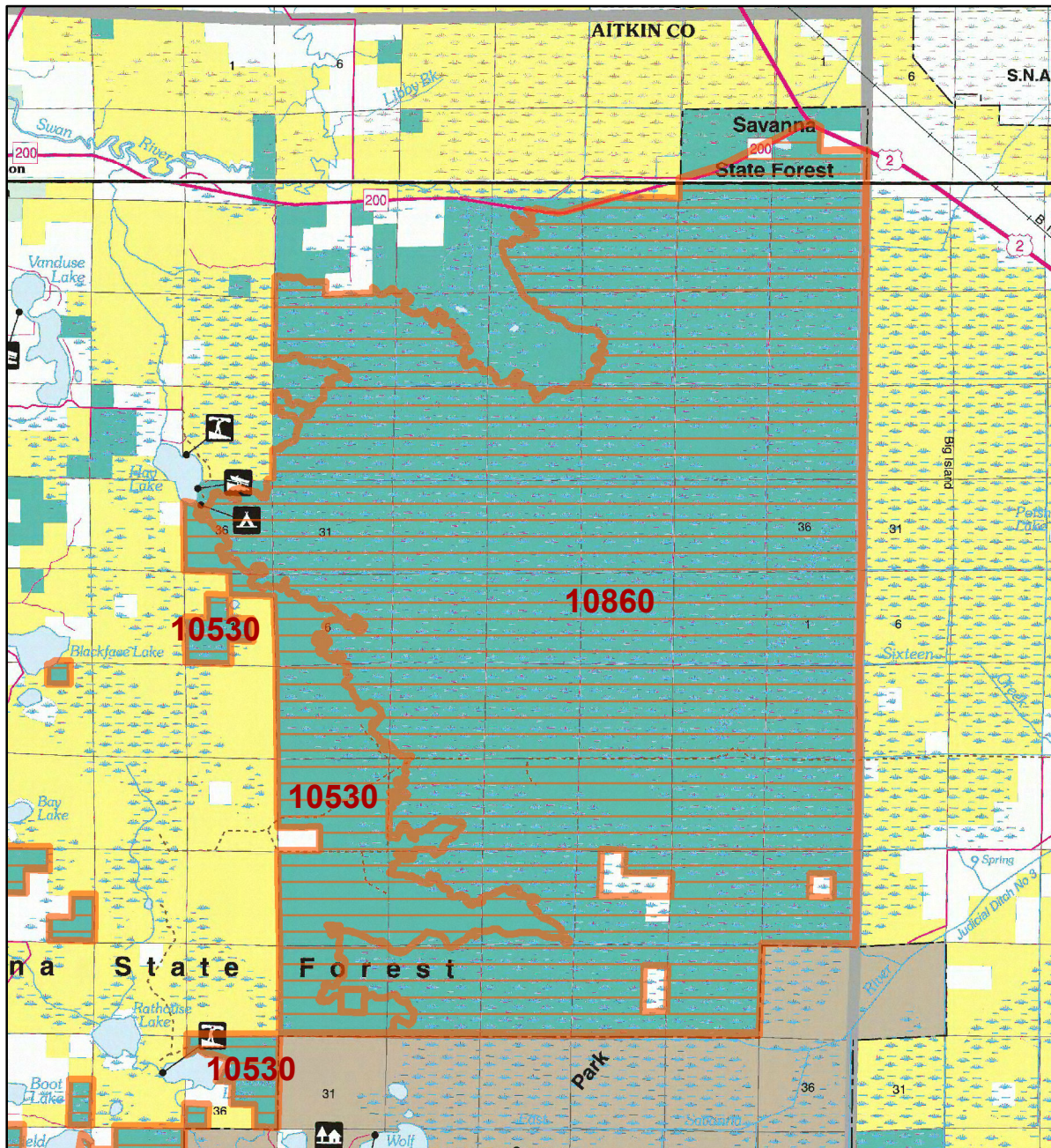
Legend

- Federal Trunk Highways
- State Trunk Highways
- County Highways
- Municipal, Township or Other Roads
- HCVF Site
- PLS Sections



HCVF Site 10860

Floodwood Bog, Aitkin County



LEGEND

HCVF Site

MAP EXPLANATION

LAND OWNERSHIP

- County Land
- Recreation Area under 40 acres
- State Forest Land
- State Park and Recreation Land
- State Wildlife Management Area Land
- W.M.A.'s under 40 acres
- State Scientific & Natural Area Land
- S.N.A.'s under 40 acres
- National Waterfowl Production Area
- N.W.P.A.'s under 40 acres
- National Forest, Park, Wildlife Refuge & Recreation Land
- Bureau of Indian Affairs Land

BOUNDARIES

- County Unit Boundary
- State Unit Boundary
- National Unit Boundary

TRAILS AND FOREST ROADS

- State Trail
- State Forest Road

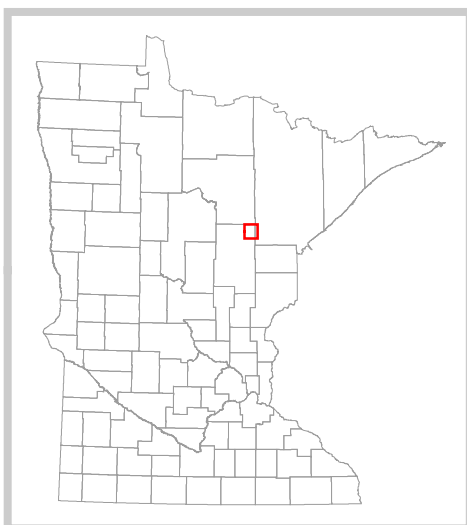
DESIGNATED WATERWAYS

- State Trout Stream
- State Canoe and Boating Route
- State Wild, Scenic & Recreational River (also designated Canoe & Boating Route)
- National Wild, Scenic & Recreational River (also designated Canoe & Boating Route)

FACILITIES

- D.N.R. Office
- Travel Information Center
- Rest Area (with facilities)
- Rest Area (limited facilities)
- Campground
- Watercraft Camping
- Equestrian Camping
- Water Access
- Carry-in Access
- Dam (on designated canoe route)
- Fishing Pier
- Overlook
- Parking
- Historic Site
- Geologic Feature
- Fish Hatchery
- Forestry Nursery
- National Great River Road
- State Great River Road

NOTE: Some of the features defined in this map explanation may not occur on the map.



The PRIM series was developed using funds provided through the Legislative Commission on Minnesota Resources (LCMR).

Base information was compiled from 1:100,000 series U.S. Geologic Survey planimetric maps.

Facility and ownership information was compiled from the following sources: Minnesota Department of Natural Resources, Minnesota Department of Transportation, State Planning Agency, Minnesota Historical Society and the respective counties.



0 3 6 Miles

Land ownership categories on this map are in some cases outdated. HCVF sites are on DNR-managed land only; DNR HCVF sites have not been identified on other ownerships.



HCVF Informational Report

Report Run: September 3, 2013

General Information

HCVF #: 10860

HCVF Name: Floodwood Bog

Acres of HCVF site: 29378.48

County: Aitkin

Data edited by: NE HCVF Workgroup

Role: NE HCVF Workgroup

Date edited on: 2013-07-26

Corresponding Land Administrator(s): DNR Forestry

Management Unit Name(s) (if applicable): Savanna State Forest

HCVF Summary

HCVF site centered on a large, extensive peatland (Floodwood Bog) that extends well beyond the HCVF site into adjacent Itasca and St. Louis counties to the N and NE. East-west ditches common, north-south ditches uncommon in the peatland; ditching has had only localized affects. Northern half with largest patterned peatlands in the county. True bogs restricted to north half, other forested peatlands and wetlands (APn, FPn, WFn) in south. Significant areas of potential OG lowland conifers. High-quality landforms and native plant communities. Peatland with numerous small upland islands, many of these likely with primary forest (needs confirmation). Designated OG NH and cedar stands at western site boundary.

HCVs known to be present that factored into HCVF designation.

FSC expects DNR to maintain HCVs within designated HCVFs. Because HCVF boundaries are not the same as the larger, multi-ownership MBS Sites, this list will differ from the values identified during the MBS Survey.

HCV1e (Rare species concentration): SGCN birds. HCV1f (Taxonomic group concentration): SGCN birds. HCV1g (Outstanding Key Habitats Examples): Forest lowland conifer. HCV2-LMFa (Large habitat block): forested peatland and wet forest. HCV2-LMFBii (blocks with rare species): yes. HCV3c (Special S3 plant community): MHn47a, WFn53b. HCV3e (Old-growth forest): cedar and NH. HCV3f (Primary forest): very probable.

Management Considerations

Overall management objectives for the entire HCVF:

Silvicultural prescriptions in Key Habitat or rare native plant communities maintains or enhances the floristic, structural, and spatial components that define the native plant community; see SRM Objective code CON1. Silviculture in MHn47a and WFn53b either prolongs an existing growth stage transition or complements a transition to the next later growth stage. Apply DNR HCV General Landscape Guidance. Field verify primary forest in this site.

Management direction from the following sources was considered in developing the above recommendations:

North Four SFRMP

Are the HCVs within this HCVF likely to benefit from coordination with adjacent landowner(s)?

No

General Comments

Address conflict between lowland conifer insect and disease (mistletoe and spruce bud worm) treatments and the value of these disturbances to SGCN birds.

Reference to rare plants and animals, Minnesota Biological Survey Sites of Biological Significance and mapped native plant communities are records maintained in the Minnesota DNR's Natural Heritage Information System (NHIS). A date of information is associated with each record. The NHIS is continually updated as new information becomes available. The lack of data listed for any geographic area should not be construed to mean that no significant features are present.

... Report End ...