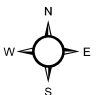
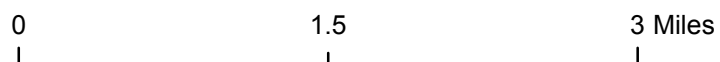
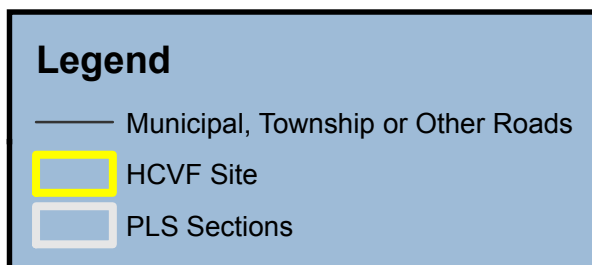
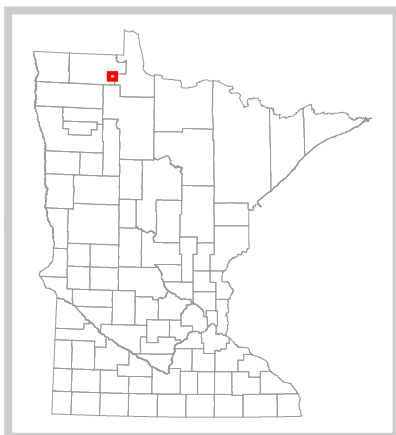
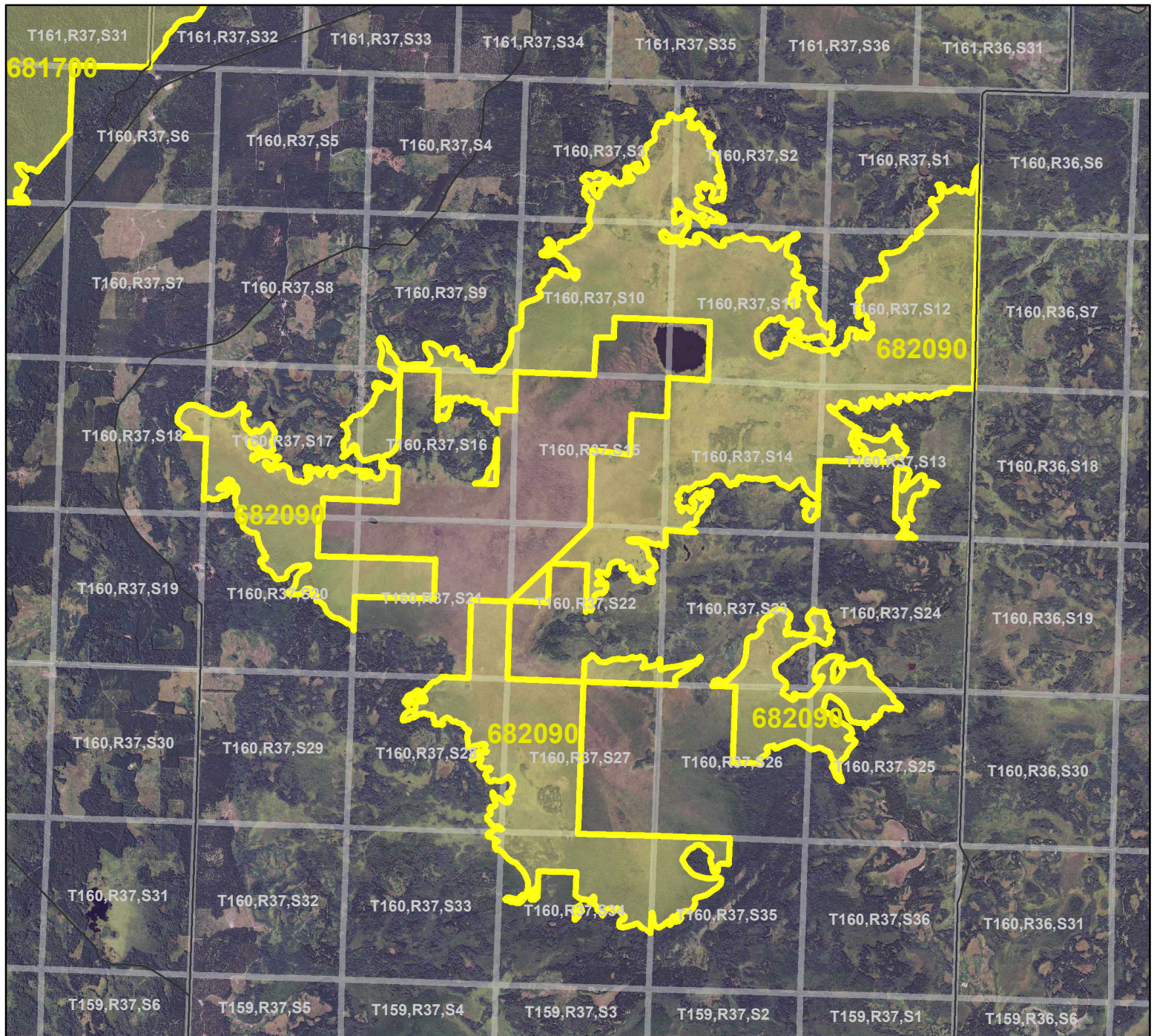


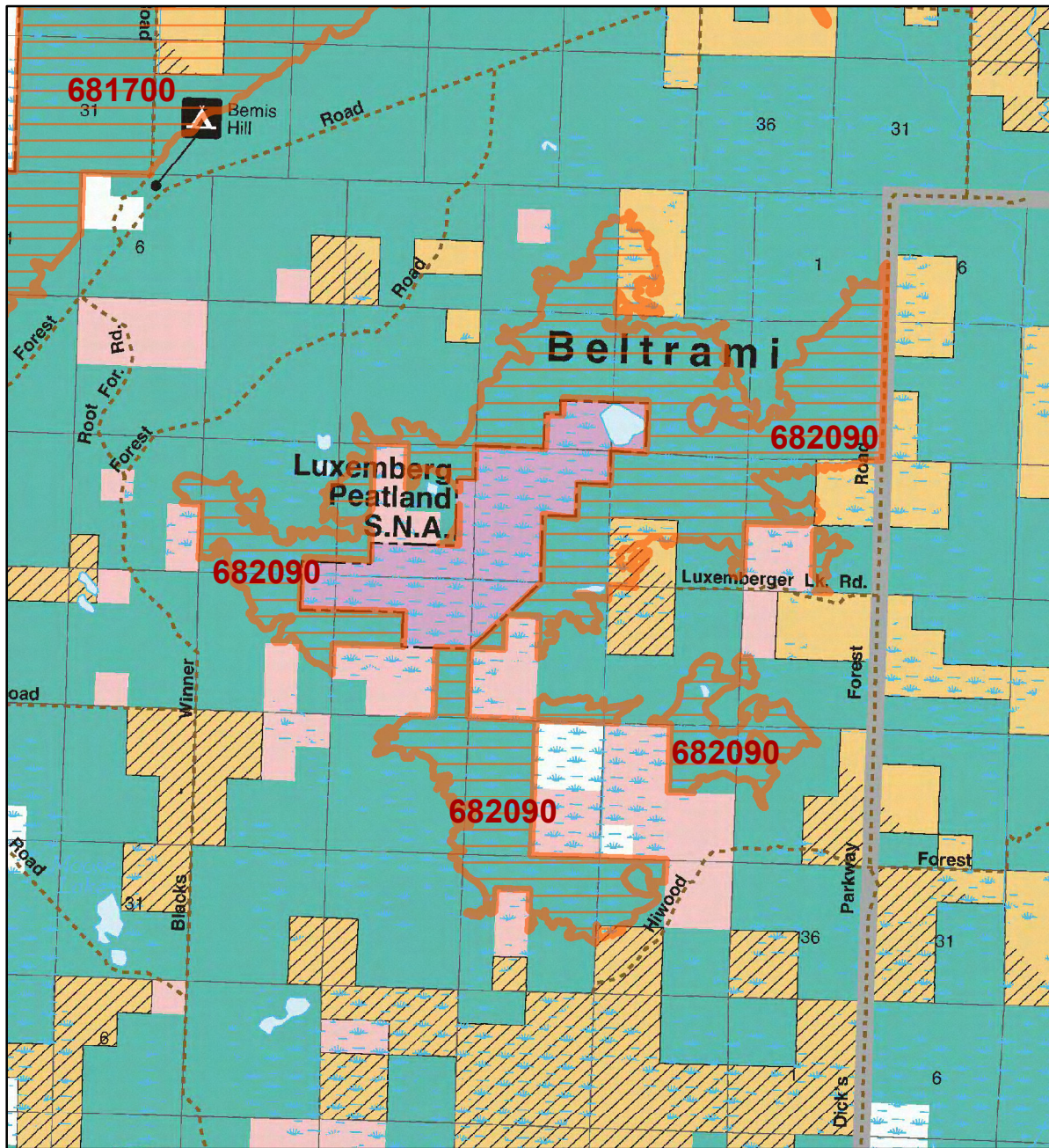
HCVF Site 682090

Luxemburg Peatland, Roseau County

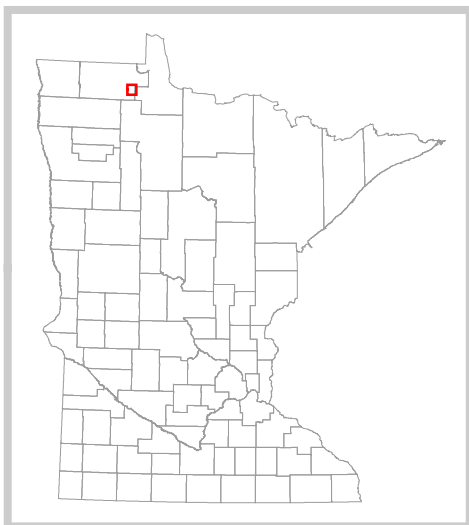


HCVF Site 682090

Luxemburg Peatland, Roseau County



- LEGEND**
- HCVF Site
- MAP EXPLANATION**
- LAND OWNERSHIP**
- County Land
 - Recreation Area under 40 acres
 - State Forest Land
 - State Park and Recreation Land
 - State Wildlife Management Area Land
 - W.M.A.'s under 40 acres
 - State Scientific & Natural Area Land
 - S.N.A.'s under 40 acres
 - National Wetland Production Area
 - N.W.P.A.'s under 40 acres
 - National Forest, Park, Wildlife Refuge & Recreation Land
 - Bureau of Indian Affairs Land
- BOUNDARIES**
- County Unit Boundary
 - State Unit Boundary
 - National Unit Boundary
- TRAILS AND FOREST ROADS**
- State Trail
 - State Forest Road
- DESIGNATED WATERWAYS**
- State Trout Stream
 - State Canoe and Boating Route
 - State Wild, Scenic & Recreational River (also designated Canoe & Boating Route)
 - National Wild, Scenic & Recreational River (also designated Canoe & Boating Route)
- FACILITIES**
- D.N.R. Office
 - Travel Information Center
 - Rest Area (with facilities)
 - Rest Area (limited facilities)
 - Campground
 - Watercraft Camping
 - Equestrian Camping
 - Water Access
 - Carry-in Access
 - Dam (on designated canoe route)
 - Fishing Pier
 - Overlook
 - Parking
 - Historic Site
 - Geologic Feature
 - Fish Hatchery
 - Forestry Nursery
 - National Great River Road
 - State Great River Road
- NOTE: Some of the features defined in this map explanation may not occur on the map.



The PRIM series was developed using funds provided through the Legislative Commission on Minnesota Resources (LCMR).

Base information was compiled from 1:100,000 series U.S. Geologic Survey planimetric maps.

Facility and ownership information was compiled from the following sources: Minnesota Department of Natural Resources, Minnesota Department of Transportation, State Planning Agency, Minnesota Historical Society and the respective counties.



0 2 4 Miles

Land ownership categories on this map are in some cases outdated.
HCVF sites are on DNR-managed land only; DNR HCVF sites have not
been identified on other ownerships.



HCVF Informational Report

Report Run: September 3, 2013

General Information

HCVF #: 682090

HCVF Name: Luxemburg Peatland

Acres of HCVF site: 4716.08

County: Roseau

Data edited by: Becky Marty, Erik Thorson

Role: NW Reg HCVF Team EWR and Wildlife Representatives

Date edited on: 2013-08-22

Corresponding Land Administrator(s): Forestry

Management Unit Name(s) (if applicable): Beltrami Island State Forest

HCVF Summary

This peatland complex is one of 18 ecologically significant patterned peatlands identified in the state. It contains a good example of an extensive water track dominated by northern rich fen and well-defined ribbed fen pattern. Rare plants include *Drosera anglica* and *Nymphaea leibergii* and rare animals include short-eared owl and yellow rail.

HCVs known to be present that factored into HCVF designation.

FSC expects DNR to maintain HCVs within designated HCVFs. Because HCVF boundaries are not the same as the larger, multi-ownership MBS Sites, this list will differ from the values identified during the MBS Survey.

LAURENTIAN MIXED FOREST PROVINCE HCVs: 1e (Rare species concentrations): 19 birds; 1g (Examples of outstanding key habitats): forest-lowland coniferous, wetland-non-forest; 2a - LMF (Large forest/peatland block): 4,716 acre peatland; 3b (S1 or S2 plant community): FDn32d, MRn83b, OPn91b2; 3c (Special S3 plant community): FPn71a, MHn44c, OPn91b1, WFn74a; 3g (Potential roadless areas).

Management Considerations

Overall management objectives for the entire HCVF:

Region HCVF Recommendations - Maintain diverse ground layer. - Maintain current mix of cover types and age classes across the HCVF site. - Look for opportunities to promote older growth stages. - Maintain and protect S2 plant communities; restore habitats and hydrology.

Management direction from the following sources was considered in developing the above recommendations:

2010 Agassiz Lowlands SFRMP Extension. The Patterned Peatlands of Minnesota, 1992. Recommendations for the Protection of Ecologically Significant Peatlands in Minnesota, 1984.

Are the HCVs within this HCVF likely to benefit from coordination with adjacent landowner(s)?

Yes

This HCVF was flagged by the Regional HCVF Team as warranting cross-ownership coordination efforts. The specific HCVs likely to benefit from such coordination with adjacent landowners are identified below.

HCV 1e, 1g, 2a, 3b, 3c, 3g. Luxemburg Peatland SNA is nested within (but not part of) this HCVF and contains additional SGCN, rare species, and rare plant communities. Rare species and S3 NPCs extend onto adjacent private, Tribal, and BIA property.

General Comments

Multiple rare plants and NPCs documented across this HCVF boundary. State threatened plant observed on Mud Lake within adjacent SNA. Hydrology should be evaluated to determine if management could be coordinated in that regard.

Reference to rare plants and animals, Minnesota Biological Survey Sites of Biological Significance and mapped native plant communities are records maintained in the Minnesota DNR's Natural Heritage Information System (NHIS). A date of information is associated with each record. The NHIS is continually updated as new information becomes available. The lack of data listed for any geographic area should not be construed to mean that no significant features are present.

... Report End ...