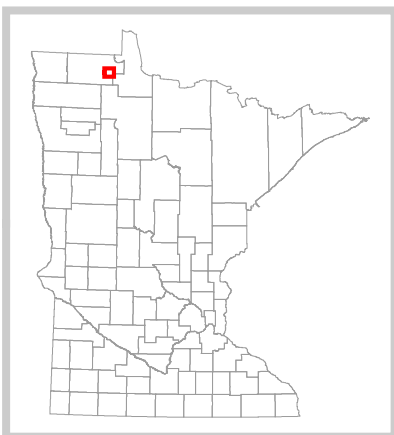
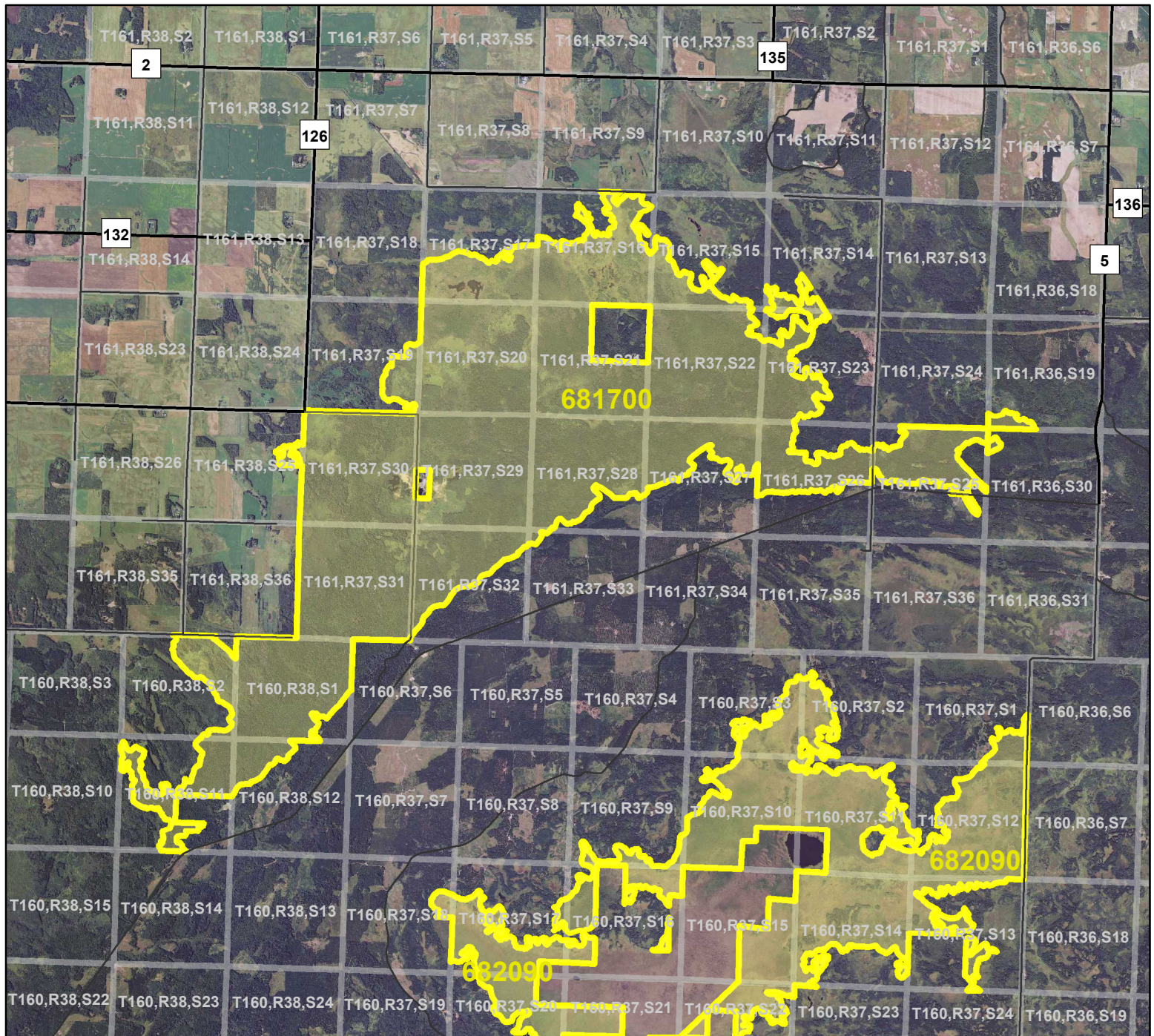


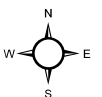
HCVF Site 681700

Bemis Swamp, Roseau County



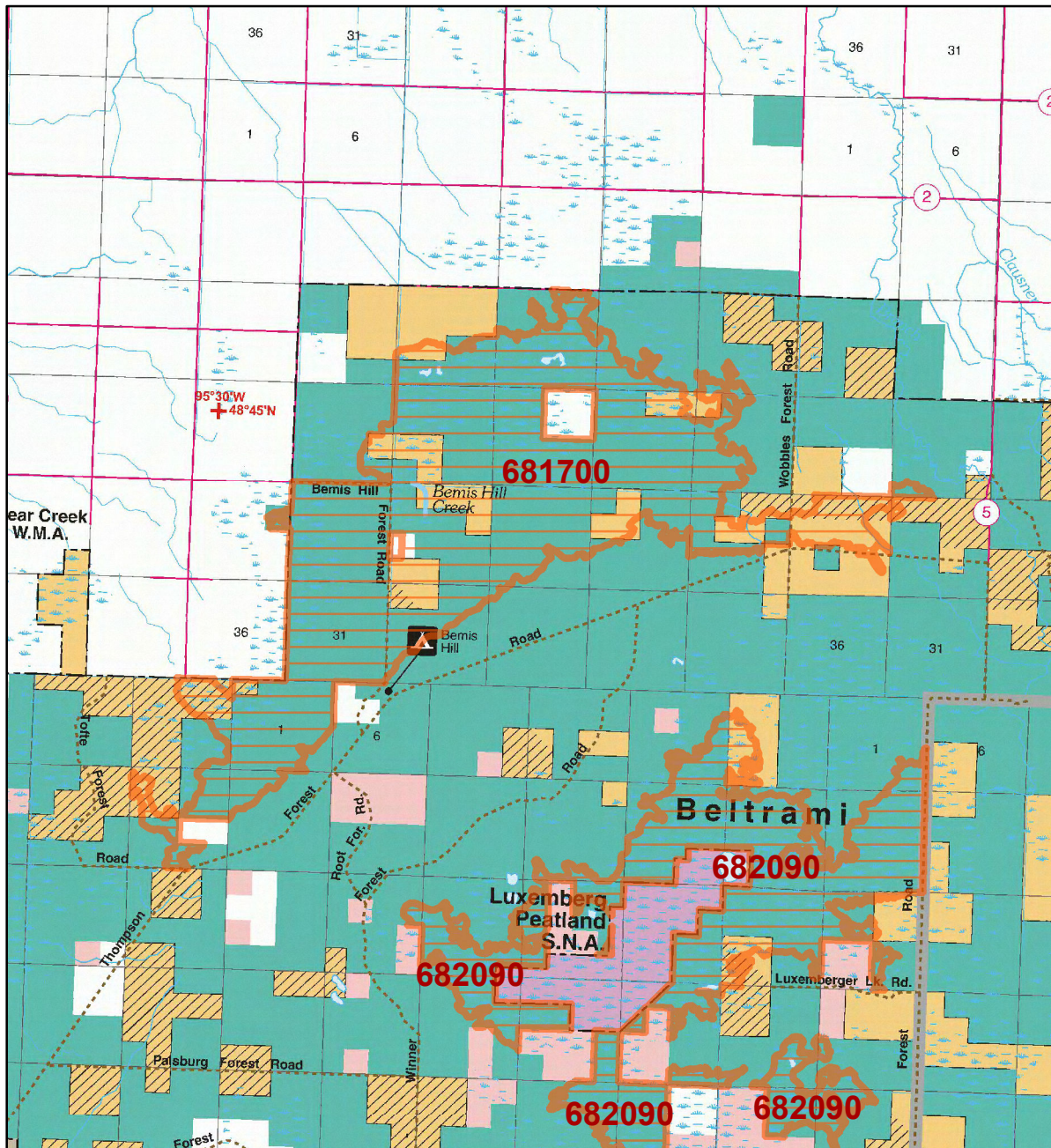
Legend

- County Highways
- Municipal, Township or Other Roads
- HCVF Site
- PLS Sections



HCVF Site 681700

Bemis Swamp, Roseau County



LEGEND

HCVF Site

MAP EXPLANATION

LAND OWNERSHIP

- County Land
- Recreation Area under 40 acres
- State Forest Land
- State Park and Recreation Land
- State Wildlife Management Area Land
- W.M.A.'s under 40 acres
- State Scientific & Natural Area Land
- S.N.A.'s under 40 acres
- National Waterfowl Production Area
- N.W.P.A.'s under 40 acres
- National Forest, Park, Wildlife Refuge & Recreation Land
- Bureau of Indian Affairs Land

BOUNDARIES

- County Unit Boundary
- State Unit Boundary
- National Unit Boundary

TRAILS AND FOREST ROADS

- State Trail
- State Forest Road

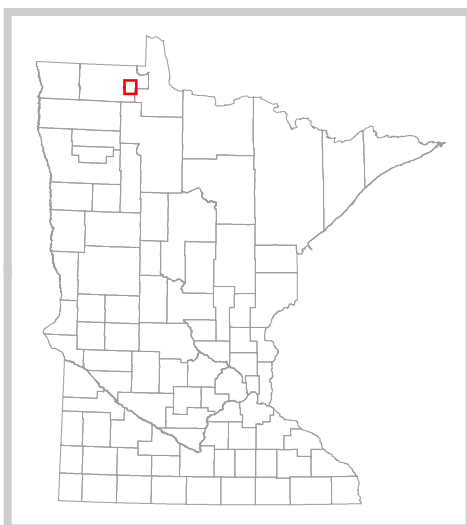
DESIGNATED WATERWAYS

- State Trout Stream
- State Canoe and Boating Route
- State Wild, Scenic & Recreational River (also designated Canoe & Boating Route)
- National Wild, Scenic & Recreational River (also designated Canoe & Boating Route)

FACILITIES

- D.N.R. Office
- Travel Information Center
- Rest Area (with facilities)
- Rest Area (limited facilities)
- Campground
- Watercraft Camping
- Equestrian Camping
- Water Access
- Carry-in Access
- Dam (on designated canoe route)
- Fishing Pier
- Overlook
- Parking
- Historic Site
- Geologic Feature
- Fish Hatchery
- Forestry Nursery
- National Great River Road
- State Great River Road

NOTE: Some of the features defined in this map explanation may not occur on the map.



The PRIM series was developed using funds provided through the Legislative Commission on Minnesota Resources (LCMR).

Base information was compiled from 1:100,000 series U.S. Geologic Survey planimetric maps.

Facility and ownership information was compiled from the following sources: Minnesota Department of Natural Resources, Minnesota Department of Transportation, State Planning Agency, Minnesota Historical Society and the respective counties.



0 3 6 Miles

Land ownership categories on this map are in some cases outdated. HCVF sites are on DNR-managed land only; DNR HCVF sites have not been identified on other ownerships.



HCVF Informational Report

Report Run: September 3, 2013

General Information

HCVF #: 681700

HCVF Name: Bemis Swamp

Acres of HCVF site: 7567.00

County: Roseau

Data edited by: Becky Marty, Erik Thorson

Role: NW Reg HCVF Team EWR and Wildlife Representatives

Date edited on: 2013-08-22

Corresponding Land Administrator(s): Forestry/Wildlife

Management Unit Name(s) (if applicable): Beltrami Island State Forest

HCVF Summary

This site is dominated by a large seepage-fed peatland at base of a prominent beach ridge. Numerous rare plants and orchids occur through much of the area. This site has one of most species rich and abundant orchid populations in the state and probably includes one of the largest, if not the largest, populations of *Cypripedium arietinum* in the state. Ditches, road, and a gravel pit occur within site, but downstream of most important features. Good and extensive examples of wet forest and rich peatland forest communities are present. This site is also unique setting for two spring fens.

HCVs known to be present that factored into HCVF designation.

FSC expects DNR to maintain HCVs within designated HCVFs. Because HCVF boundaries are not the same as the larger, multi-ownership MBS Sites, this list will differ from the values identified during the MBS Survey.

LAURENTIAN MIXED FOREST PROVINCE HCVs: 1b (S1 or S2 species:): 2 plants; 1f (Taxonomic group concentration): orchids; 1g (Examples of outstanding key habitats): Forest-lowland coniferous, wetland-non-forest; 2a - LMF (Large forest/peatland block): 7,567 acre peatland; 3a (G1 or G2 plant community): OPn93a; 3b (S1 or S2 plant community): OPn93a, FDn12a, FDn32d, MRn83b; 3c (Special S3 plant community): FPn63c, FPn71a, MHn44c, WFn53b, WFn74a.

Management Considerations

Overall management objectives for the entire HCVF:

Region HCVF Recommendations - Maintain diverse ground layer. - Maintain current mix of cover types and age classes across HCVF. - Validate occurrence and location of S1/S2 species and species concentrations; maintain and protect localized habitats and hydrology. - Validate S1/S2 plant community FDn12a. - Minimize size and impact of crown closure from any harvest activities. - Manage to maintain or promote older growth stages.

Management direction from the following sources was considered in developing the above recommendations:

2010 Agassiz Lowlands SFRMP Extension. Ecological Evaluation of Bemis Swamp 2009.

Are the HCVs within this HCVF likely to benefit from coordination with adjacent landowner(s)?

Yes

This HCVF was flagged by the Regional HCVF Team as warranting cross-ownership coordination efforts. The specific HCVs likely to benefit from such coordination with adjacent landowners are identified below.

HCV 1b, 1f, 1g, 2a, 3a, 3b, 3c. Rare species, S2 and S3 NPCs extend onto adjacent private and USFWS LUP property.

General Comments

Multiple rare plants and NPCs documented across this HCVF boundary. Hydrology should be evaluated to determine if management could be coordinated in that regard.

Reference to rare plants and animals, Minnesota Biological Survey Sites of Biological Significance and mapped native plant communities are records maintained in the Minnesota DNR's Natural Heritage Information System (NHIS). A date of information is associated with each record. The NHIS is continually updated as new information becomes available. The lack of data listed for any geographic area should not be construed to mean that no significant features are present.

... Report End ...