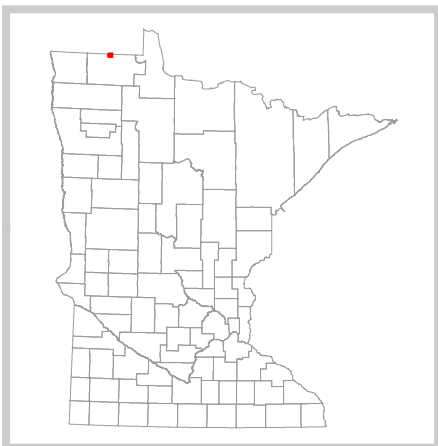
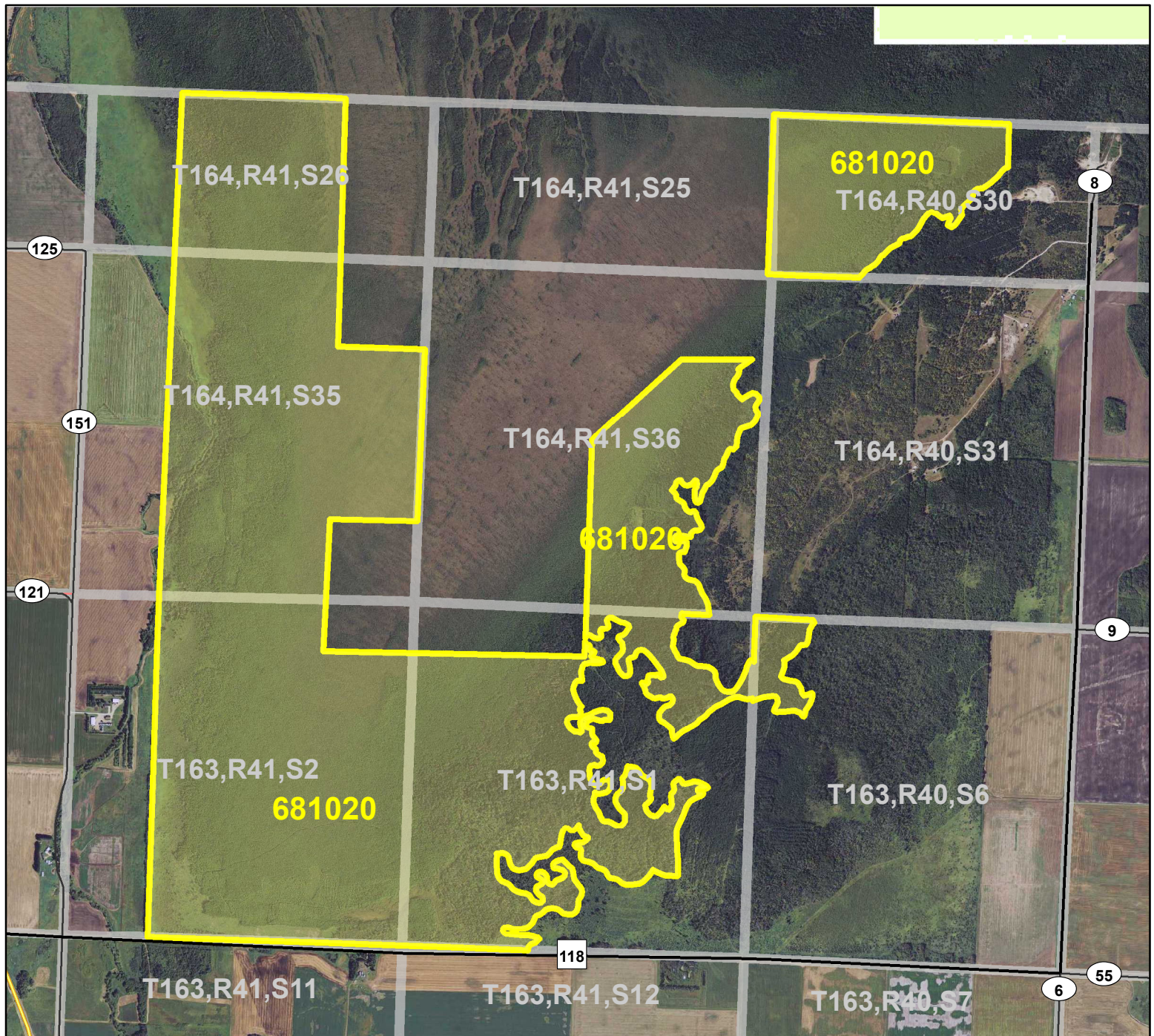


HCVF Site 681020

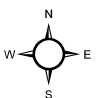
Pine Creek Peatland, Roseau County



Legend

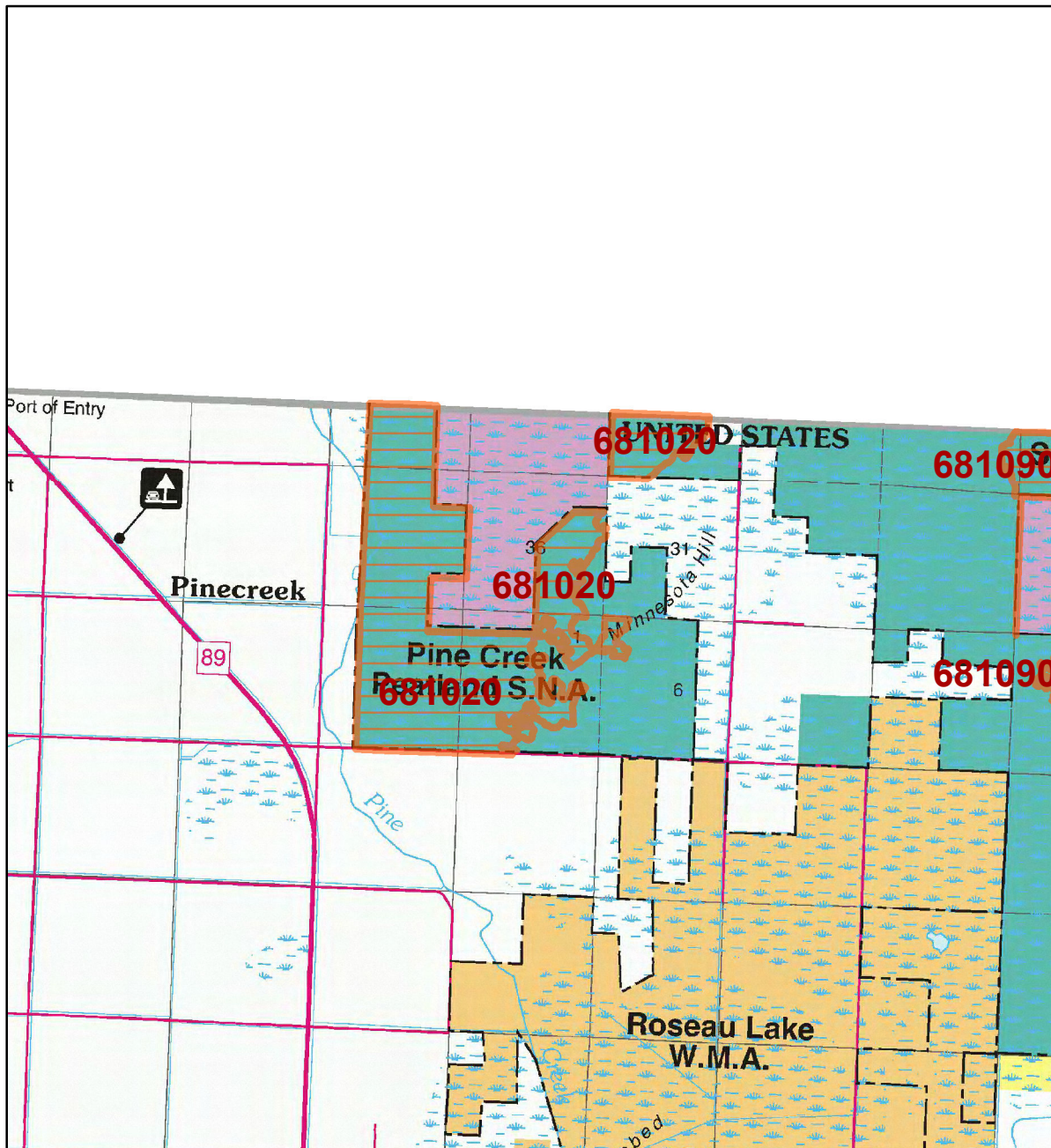
- State Trunk Highways
- County Highways
- Municipal, Township or Other Roads
- Ramps
- HCVF Site
- PLS Sections

0 0.5 1 Miles

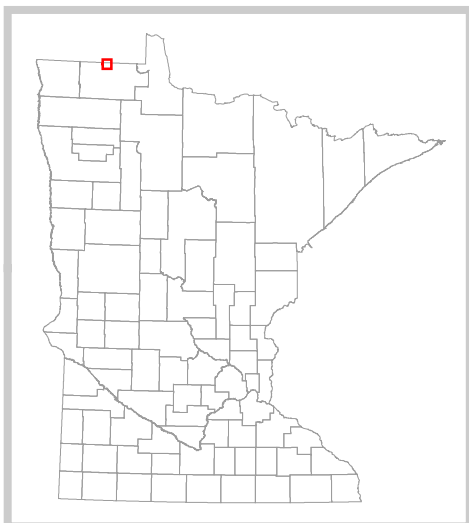


HCVF Site 681020

Pine Creek Peatland, Roseau County



- LEGEND**
- HCVF Site**
- MAP EXPLANATION**
- LAND OWNERSHIP**
- County Land
 - Recreation Area under 40 acres
 - State Forest Land
 - State Park and Recreation Land
 - State Wildlife Management Area Land
 - W.M.A.'s under 40 acres
 - State Scientific & Natural Area Land
 - S.N.A.'s under 40 acres
 - National Waterfowl Production Area
 - N.W.P.A.'s under 40 acres
 - National Forest, Park, Wildlife Refuge & Recreation Land
 - Bureau of Indian Affairs Land
- BOUNDARIES**
- County Unit Boundary
 - State Unit Boundary
 - National Unit Boundary
- TRAILS AND FOREST ROADS**
- State Trail
 - State Forest Road
- DESIGNATED WATERWAYS**
- State Trout Stream
 - State Canoe and Boating Route
 - State Wild, Scenic & Recreational River (also designated Canoe & Boating Route)
 - National Wild, Scenic & Recreational River (also designated Canoe & Boating Route)
- FACILITIES**
- D.N.R. Office
 - Travel Information Center
 - Rest Area (with facilities)
 - Rest Area (limited facilities)
 - Campground
 - Watercraft Camping
 - Equestrian Camping
 - Water Access
 - Carry-in Access
 - Dam (on designated canoe route)
 - Fishing Pier
 - Overlook
 - Parking
 - Historic Site
 - Geologic Feature
 - Fish Hatchery
 - Forestry Nursery
 - National Great River Road
 - State Great River Road
- NOTE: Some of the features defined in this map explanation may not occur on the map.



The PRIM series was developed using funds provided through the Legislative Commission on Minnesota Resources (LCMR).

Base information was compiled from 1:100,000 series U.S. Geologic Survey planimetric maps.

Facility and ownership information was compiled from the following sources: Minnesota Department of Natural Resources, Minnesota Department of Transportation, State Planning Agency, Minnesota Historical Society and the respective counties.



0 2 4 Miles

Land ownership categories on this map are in some cases outdated. HCVF sites are on DNR-managed land only; DNR HCVF sites have not been identified on other ownerships.



HCVF Informational Report

Report Run: September 3, 2013

General Information

HCVF #: 681020

HCVF Name: Pine Creek Peatland

Acres of HCVF site: 1682.69

County: Roseau

Data edited by: Becky Marty, Erik Thorson

Role: NW Reg HCVF Team EWR and Wildlife Representatives

Date edited on: 2013-08-22

Corresponding Land Administrator(s): Forestry

Management Unit Name(s) (if applicable): Lost River State Forest

HCVF Summary

This site is one of 18 ecologically significant patterned peatlands identified in the state. It contains the best example of the spring fen landform, which has extremely rich fen channels flowing through a rich forested swamp. A large undisturbed northern rich fen occurs downslope that has well defined ribbed patterns. Three state threatened species are present: *Cypripedium arietinum*, *Carex sterilis*, and *Drosera linearis*.

HCVs known to be present that factored into HCVF designation.

FSC expects DNR to maintain HCVs within designated HCVFs. Because HCVF boundaries are not the same as the larger, multi-ownership MBS Sites, this list will differ from the values identified during the MBS Survey.

LAURENTIAN MIXED FOREST PROVINCE HCVs: 1b (S1 or S2 species): 3 plants; 1g (Examples of outstanding key habitats): wetland-nonforest; 2bii - LMF (Late-successional forest block with rare species): yes; 3b (S1 or S2 plant community): OPn91b2, OPn93a; 3c (Special S3 plant community): FPn71a, FPw63a, MHn44c, OPn91b1, WFn53b; 3f (Potential primary forest): yes; 3g (Potential roadless area).

Management Considerations

Overall management objectives for the entire HCVF:

Region HCVF Recommendations - Maintain diverse ground layer; seek rare plants as found in adjacent SNA. - Maintain current mix of cover types and age classes across the HCVF site; look for opportunities to reduce shrubs in the wetter areas and promote older growth stages. - Maintain and protect rare plant communities; when doing management, verify NPCs. - Restore habitats and hydrology. - Validate potential primary forest. - Validate potential roadless area.

Management direction from the following sources was considered in developing the above recommendations:

2010 Agassiz Lowlands SFRMP Extension. 2010 Pine Creek Peatland SNA plan. The Patterned Peatlands of Minnesota, 1992. Recommendations for the Protection of Ecologically Significant Peatlands in Minnesota, 1984.

Are the HCVs within this HCVF likely to benefit from coordination with adjacent landowner(s)?

Yes

This HCVF was flagged by the Regional HCVF Team as warranting cross-ownership coordination efforts. The specific HCVs likely to benefit from such coordination with adjacent landowners are identified below.

HCV 1g, 2bii, 3b, 3c, 3f, 3g. Pine Creek Peatland SNA is nested within (but not included with) this HCVF and contains additional SGCN, rare species, and rare plant communities. Rare species, S2 and S3 HCVs extend onto adjacent Private and Dept of Transportation property.

General Comments

Multiple rare plants, SGCN, and NPCs documented across this HCVF boundary. There are multiple management plans directing management direction at this site. Hydrology should be evaluated to determine if management could be coordinated in that regard.

Reference to rare plants and animals, Minnesota Biological Survey Sites of Biological Significance and mapped native plant communities are records maintained in the Minnesota DNR's Natural Heritage Information System (NHIS). A date of information is associated with each record. The NHIS is continually updated as new information becomes available. The lack of data listed for any geographic area should not be construed to mean that no significant features are present.

... Report End ...