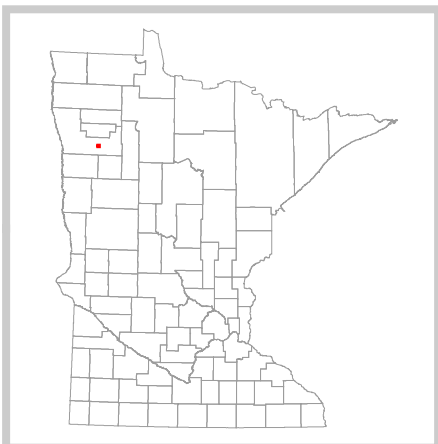
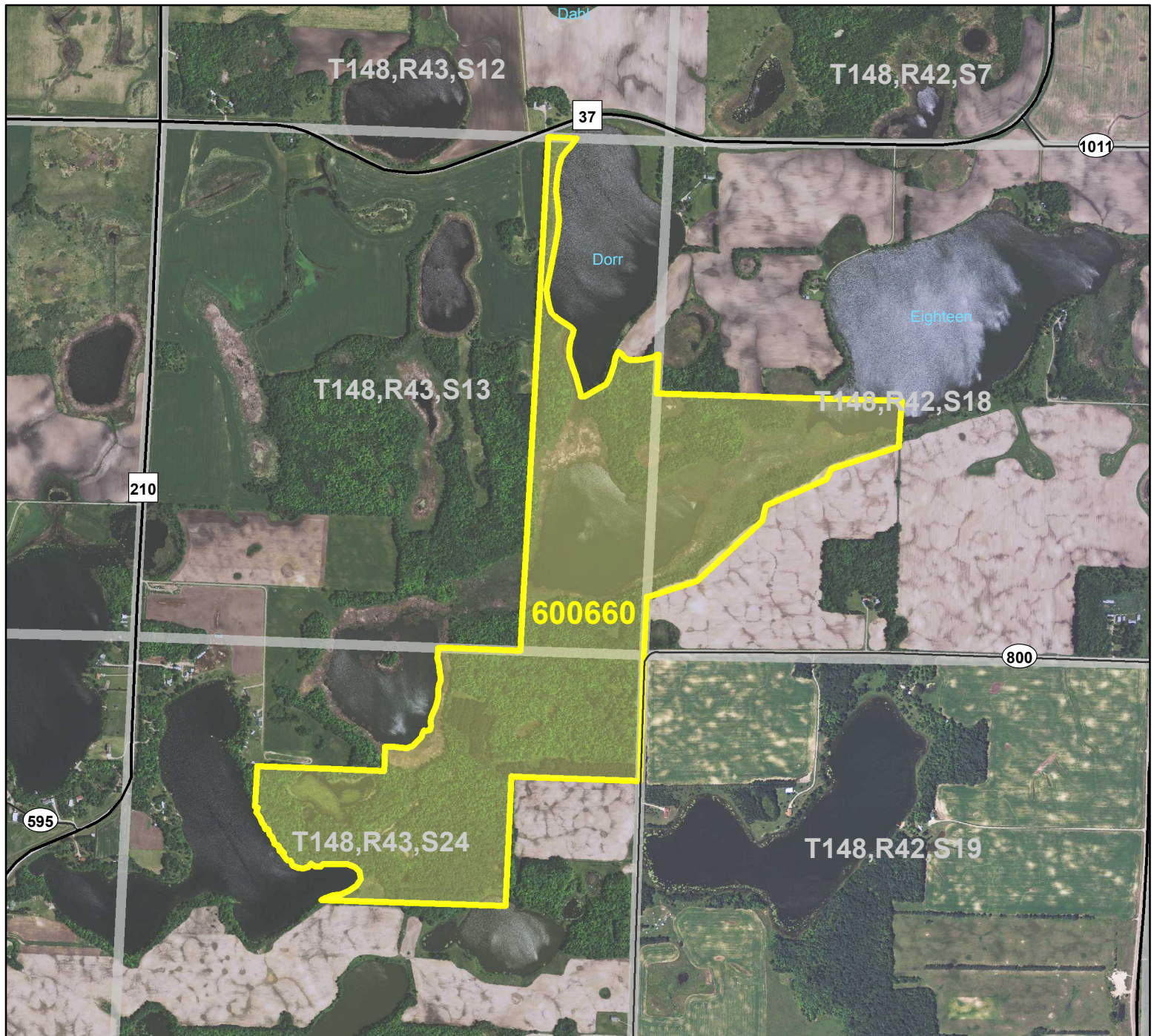


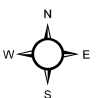
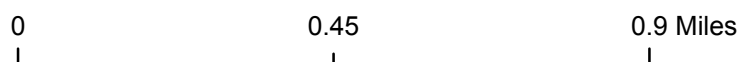
# HCVF Site 600660

## Dorr WMA 66, Polk County



**Legend**

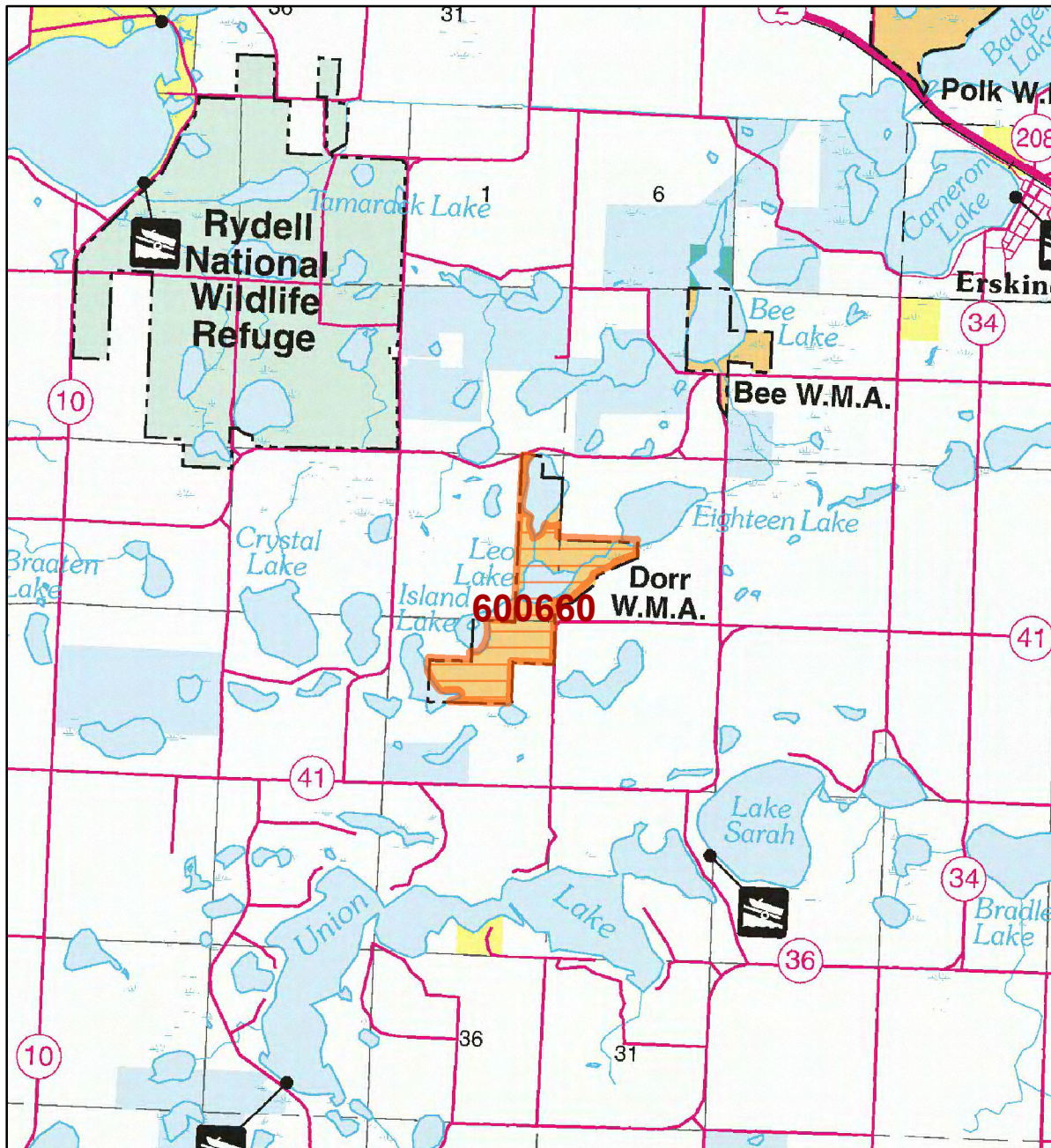
- County Highways
- Municipal, Township or Other Roads
- HCVF Site
- PLS Sections





# HCVF Site 600660

## Dorr WMA 66, Polk County



### LEGEND

HCVF Site

### MAP EXPLANATION

#### LAND OWNERSHIP

- County Land
- Recreation Area under 40 acres
- State Forest Land
- State Park and Recreation Land
- State Wildlife Management Area Land
- W.M.A.'s under 40 acres
- State Scientific & Natural Area Land
- S.N.A.'s under 40 acres
- National Waterfowl Production Area
- N.W.P.A.'s under 40 acres
- National Forest, Park, Wildlife Refuge & Recreation Land
- Bureau of Indian Affairs Land

#### BOUNDARIES

- County Unit Boundary
- State Unit Boundary
- National Unit Boundary

#### TRAILS AND FOREST ROADS

- State Trail
- State Forest Road

#### DESIGNATED WATERWAYS

- State Trout Stream
- State Canoe and Boating Route
- State Wild, Scenic & Recreational River (also designated Canoe & Boating Route)
- National Wild, Scenic & Recreational River (also designated Canoe & Boating Route)

#### FACILITIES

- D.N.R. Office
- Travel Information Center
- Rest Area (with facilities)
- Rest Area (limited facilities)
- Campground
- Watercraft Camping
- Equestrian Camping
- Water Access
- Carry-in Access
- Dam (on designated canoe route)
- Fishing Pier
- Overlook
- Parking
- Historic Site
- Geologic Feature
- Fish Hatchery
- Forestry Nursery
- National Great River Road
- State Great River Road

NOTE: Some of the features defined in this map explanation may not occur on the map.

The PRIM series was developed using funds provided through the Legislative Commission on Minnesota Resources (LCMR).

Base information was compiled from 1:100,000 series U.S. Geologic Survey planimetric maps.

Facility and ownership information was compiled from the following sources: Minnesota Department of Natural Resources, Minnesota Department of Transportation, State Planning Agency, Minnesota Historical Society and the respective counties.



0 1.75 3.5 Miles

Land ownership categories on this map are in some cases outdated.  
HCVF sites are on DNR-managed land only; DNR HCVF sites have not  
been identified on other ownerships.



# HCVF Informational Report

Report Run: September 3, 2013

## General Information

**HCVF #:** 600660

**HCVF Name:** Dorr WMA 66

**Acres of HCVF site:** 294.41

**County:** Polk

**Data edited by:** Erik Thorson, Becky Marty

**Role:** NW Reg HCVF Team Wildlife and EWR Representatives

**Date edited on:** 2013-08-22

**Corresponding Land Administrator(s):** Wildlife

**Management Unit Name(s) (if applicable):** Dorr WMA

## HCVF Summary

Southern 60% of WMA is "excellent submature maple-basswood dominated by *Acer saccharum* with diverse groundlayer reflecting topographic diversity. 125 acres of MHs37b is contiguous forest. Many ephemeral ponds. Wet meadows between lakes. FPs63a (not mapped) south of Leo Lake. NW extent of maple-basswood forest on state land.

**HCVs known to be present that factored into HCVF designation.**

*FSC expects DNR to maintain HCVs within designated HCVFs. Because HCVF boundaries are not the same as the larger, multi-ownership MBS Sites, this list will differ from the values identified during the MBS Survey.*

EASTERN BROADLEAF FOREST PROVINCE HCVs: 2c - EBF (forest block in ag. landscape): yes, 294 acres; 2d - EBF (forest block with vernal pools): yes, southern half; 3a (G1 or G2 plant community): FPs63a (11 acres); 3b (S1 or S2 plant community): FPs63a (11 acres), MRp83a (28 acres); 3e (Old-growth forest): Northern Hardwoods, 126 acres.

## Management Considerations

**Overall management objectives for the entire HCVF:**

Region HCVF Recommendations - Maintain and enhance the forest block, especially focusing on the rare NPCs. - Manage to maintain or promote older growth stages; maintain the designated Old Growth. - Consult latest BMP recommendations for vernal pools.

**Management direction from the following sources was considered in developing the above recommendations:**

**Are the HCVs within this HCVF likely to benefit from coordination with adjacent landowner(s)?**

**\_Yes\_**

*This HCVF was flagged by the Regional HCVF Team as warranting cross-ownership coordination efforts. The specific HCVs likely to benefit from such coordination with adjacent landowners are identified below.*

HCV 2c, 2d, 3a, 3b, 3e. The rare plant communities, forest blocks and vernal pools are adjacent to or extend onto adjacent private lands.

## General Comments

This site is the farthest western record of the blue spotted salamander. The only public maple-basswood-red oak area in Polk Co. Much of it is designated OG.

*Reference to rare plants and animals, Minnesota Biological Survey Sites of Biological Significance and mapped native plant communities are records maintained in the Minnesota DNR's Natural Heritage Information System (NHIS). A date of information is associated with each record. The NHIS is continually updated as new information becomes available. The lack of data listed for any geographic area should not be construed to mean that no significant features are present.*

*... Report End ...*