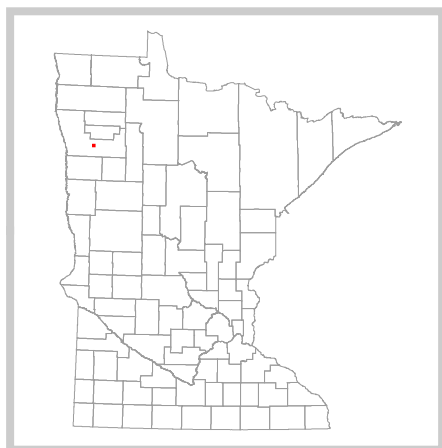
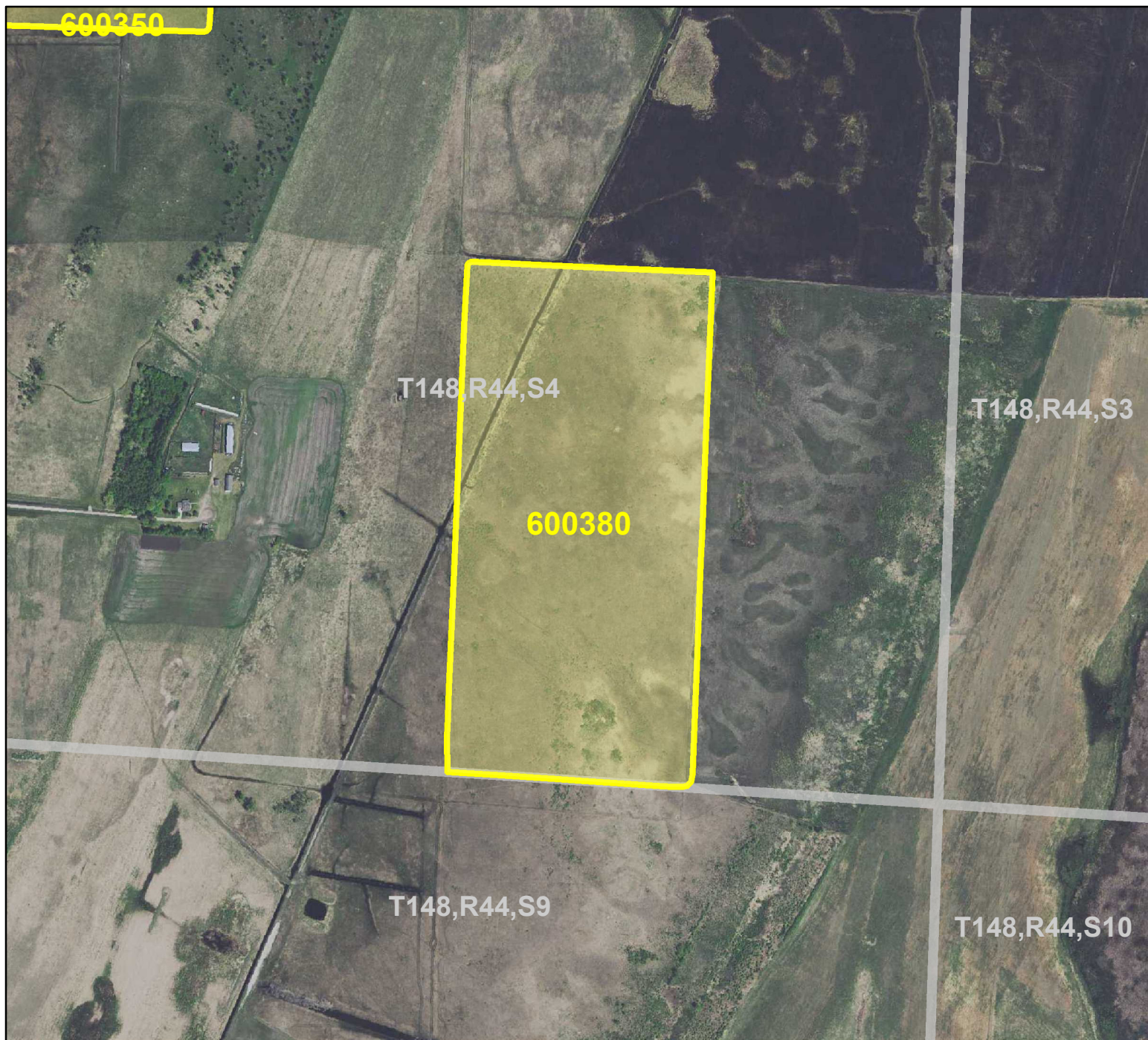




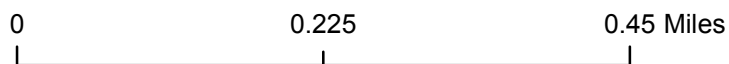
HCVF Site 600380

Godfrey Prairie, Polk County



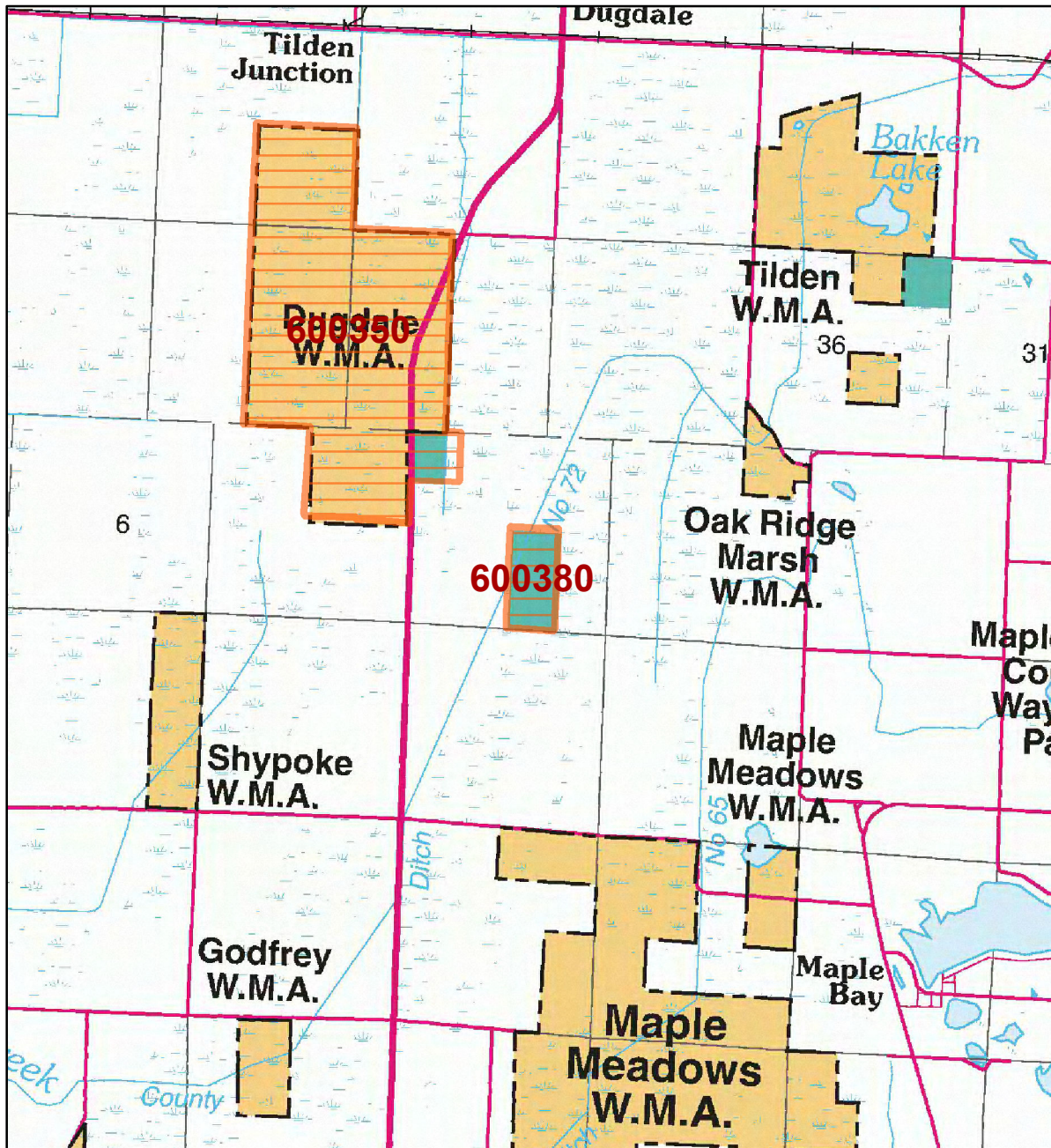
Legend

-  HCVF Site
-  PLS Sections



HCVF Site 600380

Godfrey Prairie, Polk County



LEGEND

HCVF Site

MAP EXPLANATION

LAND OWNERSHIP

- County Land
- Recreation Area under 40 acres
- State Forest Land
- State Park and Recreation Land
- State Wildlife Management Area Land
- W.M.A.'s under 40 acres
- State Scientific & Natural Area Land
- S.N.A.'s under 40 acres
- National Waterfowl Production Area
- N.W.P.A.'s under 40 acres
- National Forest, Park, Wildlife Refuge & Recreation Land
- Bureau of Indian Affairs Land

BOUNDARIES

- County Unit Boundary
- State Unit Boundary
- National Unit Boundary

TRAILS AND FOREST ROADS

- State Trail
- State Forest Road

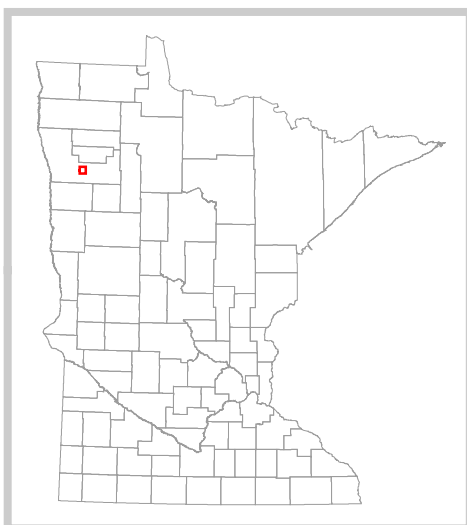
DESIGNATED WATERWAYS

- State Trout Stream
- State Canoe and Boating Route
- State Wild, Scenic & Recreational River (also designated Canoe & Boating Route)
- National Wild, Scenic & Recreational River (also designated Canoe & Boating Route)

FACILITIES

- D.N.R. Office
- Travel Information Center
- Rest Area (with facilities)
- Rest Area (limited facilities)
- Campground
- Watercraft Camping
- Equestrian Camping
- Water Access
- Carry-in Access
- Dam (on designated canoe route)
- Fishing Pier
- Overlook
- Parking
- Historic Site
- Geologic Feature
- Fish Hatchery
- Forestry Nursery
- National Great River Road
- State Great River Road

NOTE: Some of the features defined in this map explanation may not occur on the map.



The PRIM series was developed using funds provided through the Legislative Commission on Minnesota Resources (LCMR).

Base information was compiled from 1:100,000 series U.S. Geologic Survey planimetric maps.

Facility and ownership information was compiled from the following sources: Minnesota Department of Natural Resources, Minnesota Department of Transportation, State Planning Agency, Minnesota Historical Society and the respective counties.



0 1.25 2.5 Miles

Land ownership categories on this map are in some cases outdated. HCVF sites are on DNR-managed land only; DNR HCVF sites have not been identified on other ownerships.



HCVF Informational Report

Report Run: September 3, 2013

General Information

HCVF #: 600380

HCVF Name: Godfrey Prairie

Acres of HCVF site: 78.78

County: Polk

Data edited by: Becky Marty, Erik Thorson

Role: NW Reg HCVF Team EWR and Wildlife Representatives

Date edited on: 2013-08-22

Corresponding Land Administrator(s): Wildlife

Management Unit Name(s) (if applicable): Crookston Area Wildlife

HCVF Summary

Outstanding calcareous fen; part of Glacial Ridge NWR. Mosaic of mesic, wet, and saline prairie on gentle west-facing slope just to west of a beach ridge. ESE section 04 in excellent condition; WSE section 04 & WNE section 09 have experienced heavy grazing. Includes nice calcareous fen on beach ridge just E of center of section 9. Numerous rare plants.

HCVs known to be present that factored into HCVF designation.

FSC expects DNR to maintain HCVs within designated HCVFs. Because HCVF boundaries are not the same as the larger, multi-ownership MBS Sites, this list will differ from the values identified during the MBS Survey.

TALLGRASS ASPEN PARKLANDS PROVINCE HCVs: 1b (S1 or S2 species): 1 plant; 1c (Federal T or E species): 1 plant; 3a (G1 or G2 plant community): UPn23b, WPn53d; 3b (S1 or S2 plant community): UPn23b, WPn53a, WPn53d; 3c (Special S3 plant community): OPp91a (12 acres), WPn53c (43 acres).

Management Considerations

Overall management objectives for the entire HCVF:

Region HCVF Recommendations - Maintain and actively manage plant community for rare plant; reduce shrub competition. - Minimize hydrologic disturbance; remove ditch and restore hydrologic regime. - Verify G-rank plant communities and subtypes. Verify S-rank communities and subtypes.

Management direction from the following sources was considered in developing the above recommendations:

2011 Aspen Parklands SFRMP.

Are the HCVs within this HCVF likely to benefit from coordination with adjacent landowner(s)?

Yes

This HCVF was flagged by the Regional HCVF Team as warranting cross-ownership coordination efforts. The specific HCVs likely to benefit from such coordination with adjacent landowners are identified below.

HCV 1b, 1c, 3a, 3b, 3c. Rare species and rare NPCs extend onto adjacent private, TNC, and Glacial Ridge NWR property. Federally listed plant extends across the boundaries of this HCVF.
--

General Comments

Management needs to be coordinated especially for the federally listed species and rare plant communities. Hydrology should be evaluated to determine if management should be coordinated in that regard.

Reference to rare plants and animals, Minnesota Biological Survey Sites of Biological Significance and mapped native plant communities are records maintained in the Minnesota DNR's Natural Heritage Information System (NHIS). A date of information is associated with each record. The NHIS is continually updated as new information becomes available. The lack of data listed for any geographic area should not be construed to mean that no significant features are present.

... Report End ...