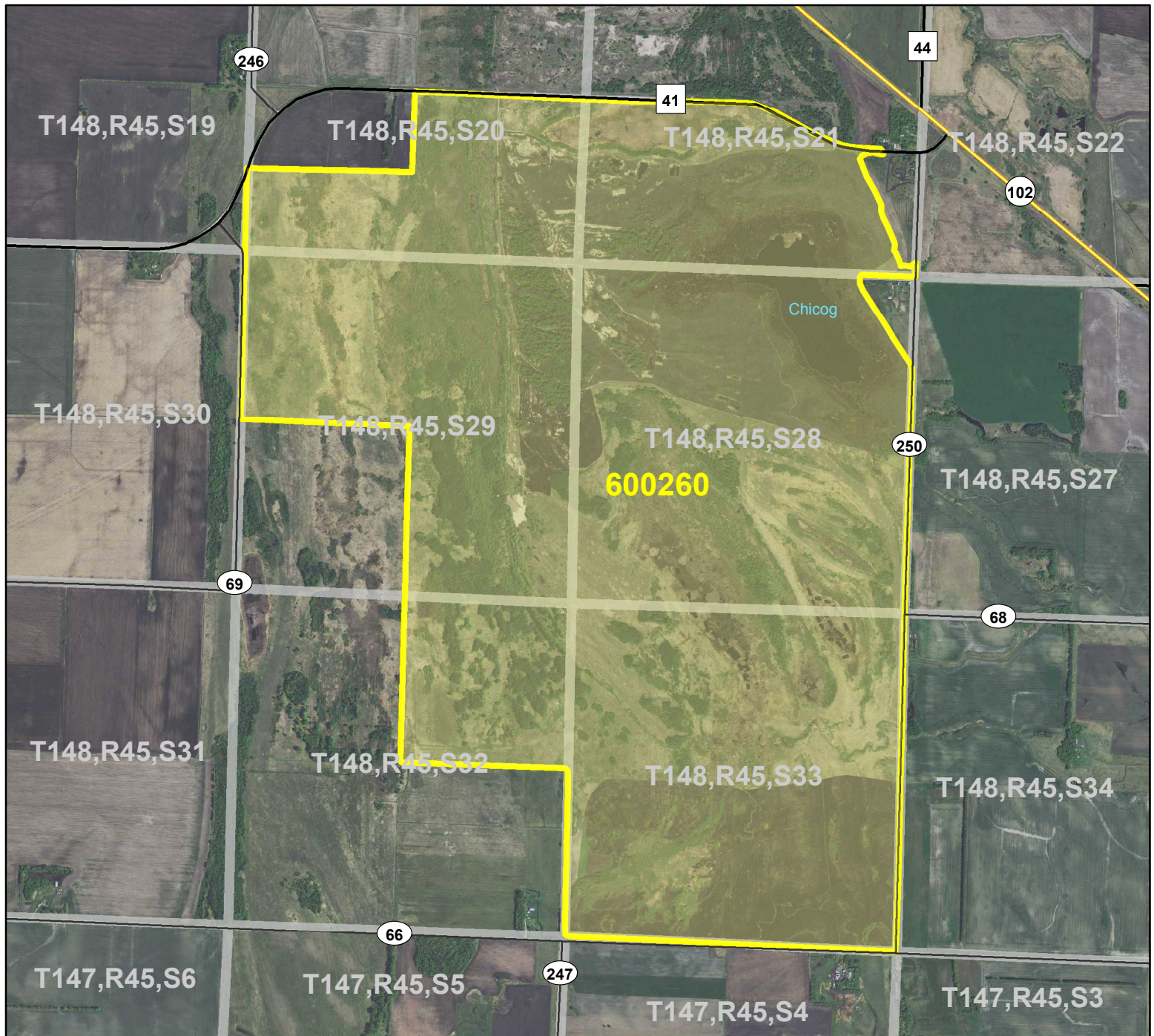


HCVF Site 600260

Chicog WMA, Polk County



Legend

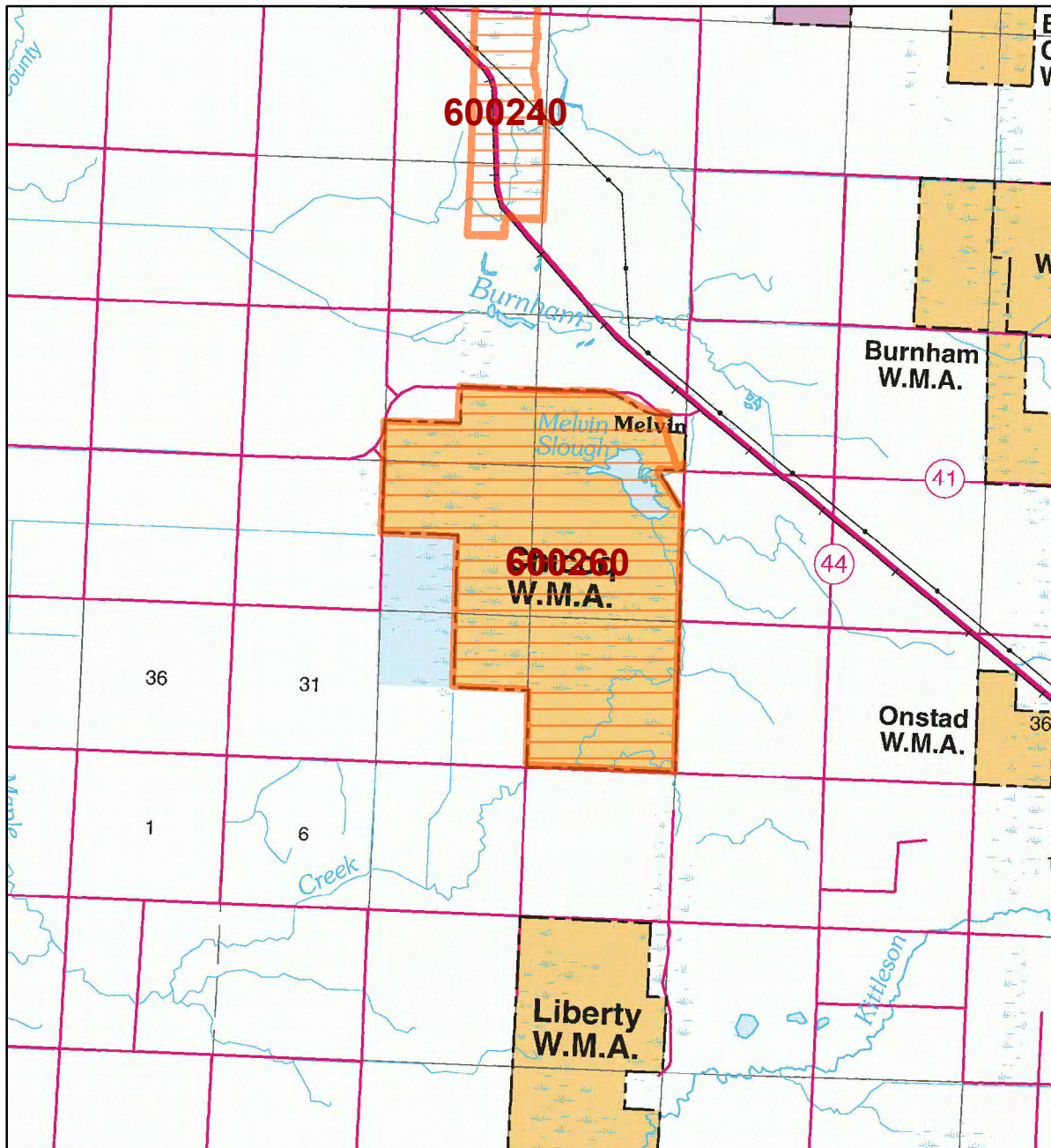
- State Trunk Highways
- County Highways
- Municipal, Township or Other Roads
- HCVF Site
- PLS Sections

0 0.5 1 Miles



HCVF Site 600260

Chicog WMA, Polk County



LEGEND

HCVF Site

MAP EXPLANATION

LAND OWNERSHIP

- County Land
- Recreation Area under 40 acres
- State Forest Land
- State Park and Recreation Land
- State Wildlife Management Area Land
 - W.M.A.'s under 40 acres
- State Scientific & Natural Area Land
 - S.N.A.'s under 40 acres
- National Waterfowl Production Area
 - N.W.P.A.'s under 40 acres
- National Forest, Park, Wildlife Refuge & Recreation Land
- Bureau of Indian Affairs Land

BOUNDARIES

- County Unit Boundary
- State Unit Boundary
- National Unit Boundary

TRAILS AND FOREST ROADS

- State Trail
- State Forest Road

DESIGNATED WATERWAYS

- State Trout Stream
- State Canoe and Boating Route
- State Wild, Scenic & Recreational River (also designated Canoe & Boating Route)
- National Wild, Scenic & Recreational River (also designated Canoe & Boating Route)

FACILITIES

- D.N.R. Office
- Travel Information Center
- Rest Area (with facilities)
- Rest Area (limited facilities)
- Campground
- Watercraft Camping
- Equestrian Camping
- Water Access
- Carry-in Access
- Dam (on designated canoe route)
- Fishing Pier
- Overlook
- Parking
- Historic Site
- Geologic Feature
- Fish Hatchery
- Forestry Nursery
- National Great River Road
- State Great River Road

NOTE: Some of the features defined in this map explanation may not occur on the map.

The PRIM series was developed using funds provided through the Legislative Commission on Minnesota Resources (LCMR).

Base information was compiled from 1:100,000 series U.S. Geologic Survey planimetric maps.

Facility and ownership information was compiled from the following sources: Minnesota Department of Natural Resources, Minnesota Department of Transportation, State Planning Agency, Minnesota Historical Society and the respective counties.



0 1.75 3.5 Miles

Land ownership categories on this map are in some cases outdated. HCVF sites are on DNR-managed land only; DNR HCVF sites have not been identified on other ownerships.



HCVF Informational Report

Report Run: September 3, 2013

General Information

HCVF #: 600260

HCVF Name: Chicog WMA

Acres of HCVF site: 2414.02

County: Polk

Data edited by: Becky Marty, Erik Thorson, Mike Locke

Role: NW Reg HCVF Team Forestry, EWR, and Wildlife Representatives

Date edited on: 2013-08-22

Corresponding Land Administrator(s): Wildlife

Management Unit Name(s) (if applicable): Chicog WMA

HCVF Summary

East: Several prairie types, calcareous fens, & wetlands on minor beach ridges and interbeach lowlands. Mostly surveyed by Robert Dana in 1986. Best dry prairie in region and one of the largest calcareous fens. Large area of saline prairie. West: mosaic of wet, mesic, & saline prairie communities bordering extensive wetlands on gradual W-facing slope W of major beach ridge. Formerly grazed. Some Agassiz Interbeach Prairie Complex. Outstanding combination of bird SGCNs.

HCVs known to be present that factored into HCVF designation.

FSC expects DNR to maintain HCVs within designated HCVFs. Because HCVF boundaries are not the same as the larger, multi-ownership MBS Sites, this list will differ from the values identified during the MBS Survey.

TALLGRASS ASPEN PARKLANDS PROVINCE HCVs: 1b (S1 or S2 species): 2 plants; 1e (Rare species concentrations): 20 birds, 10 plants; 1g (Examples of Outstanding Key Habitats): prairie, wetland-nonforest (wet prairie); 2a (Large complex of natural vegetation): 2,414 acres; 3a: (G1 or G2 plant community): OPp93a (55 acres), UPn23b (406 acres), WPn53d (31 acres); 3b (S1 or S2 plant community): OPp93a (55 acres), UPn12b (198 acres), UPn23b (406 acres), WPn53a (206 acres), WPn53d (31 acres); 3c (Special S3 plant community): WMs83a (114 acres).

Management Considerations

Overall management objectives for the entire HCVF:

Region HCVF Recommendations - Maintain diverse ground cover; maintain and protect localized habitat. - Verify rare species and protect habitat; conduct SGCN analysis for habitat needs. - Actively manage key habitats and rare plant communities to maintain, enhance, and increase where necessary. - Maintain/enhance the landscape complex of openland habitats and their associated native plant communities. - Fire can be a viable method to promote the above objectives. - Eliminate ditching. - Minimize run off in OPn communities.

Management direction from the following sources was considered in developing the above recommendations:

2011 Aspen Parklands SFRMP

Are the HCVs within this HCVF likely to benefit from coordination with adjacent landowner(s)?

Yes

This HCVF was flagged by the Regional HCVF Team as warranting cross-ownership coordination efforts. The specific HCVs likely to benefit from such coordination with adjacent landowners are identified below.

HCV 1b, 1e, 1g, 2a, 3a, 3b, and 3c. Multiple rare species, NPCs, and SGCNs extend onto adjacent private and federal lands.

General Comments

Excellent connectivity to other areas; good ability to maintain and enhance the HCVs.

Reference to rare plants and animals, Minnesota Biological Survey Sites of Biological Significance and mapped native plant communities are records maintained in the Minnesota DNR's Natural Heritage Information System (NHIS). A date of information is associated with each record. The NHIS is continually updated as new information becomes available. The lack of data listed for any geographic area should not be construed to mean that no significant features are present.

... Report End ...