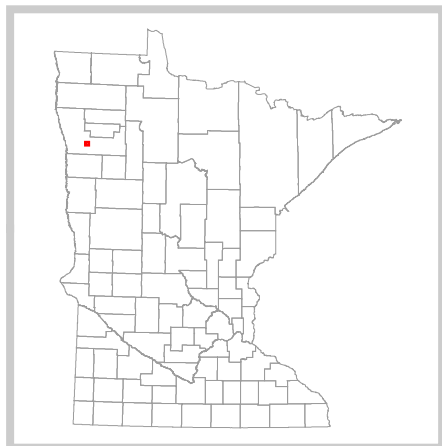
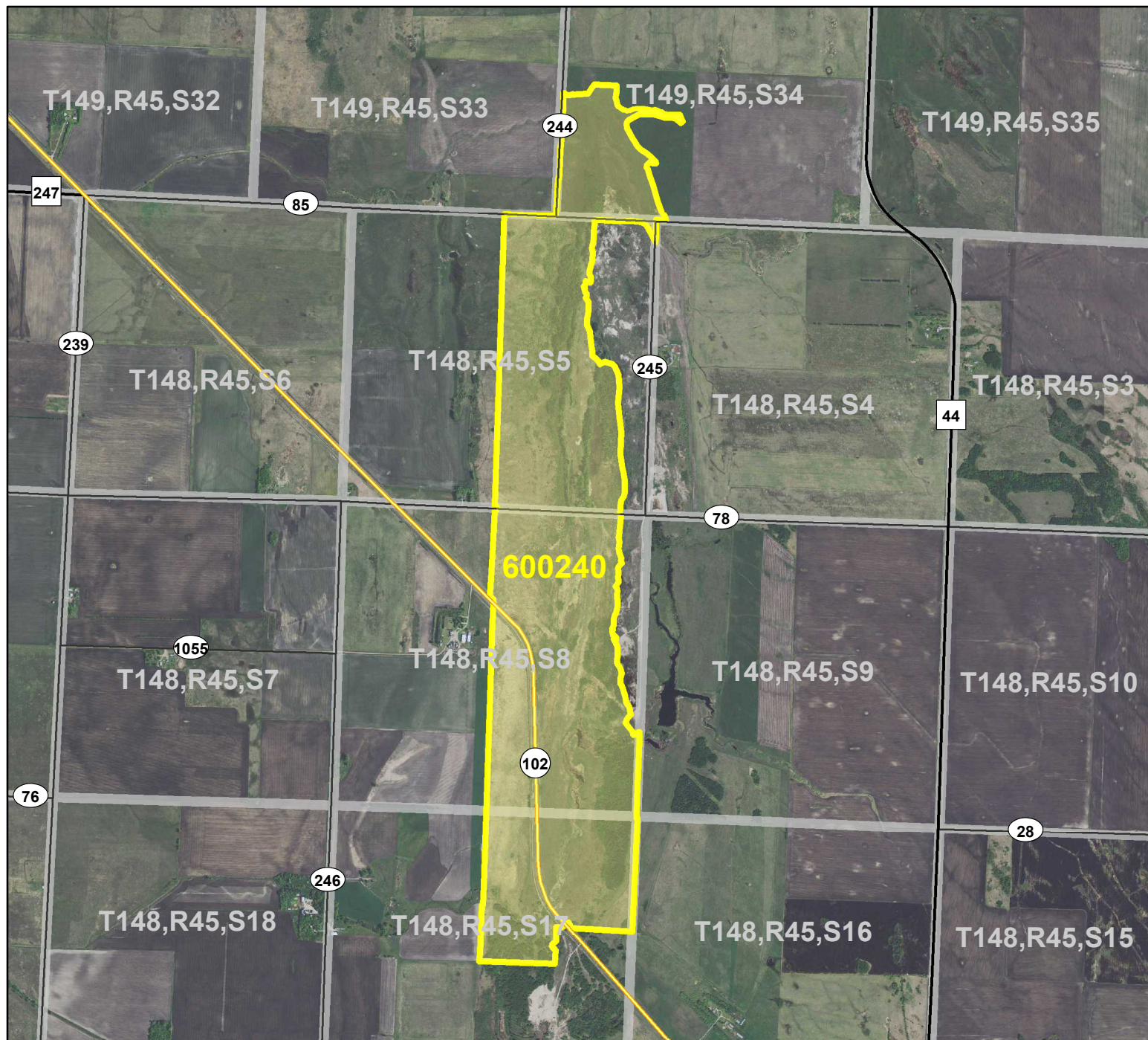


# HCVF Site 600240

## Onstad Beach Ridges, Polk County



### Legend

- State Trunk Highways
- County Highways
- Municipal, Township or Other Roads
- HCVF Site
- PLS Sections



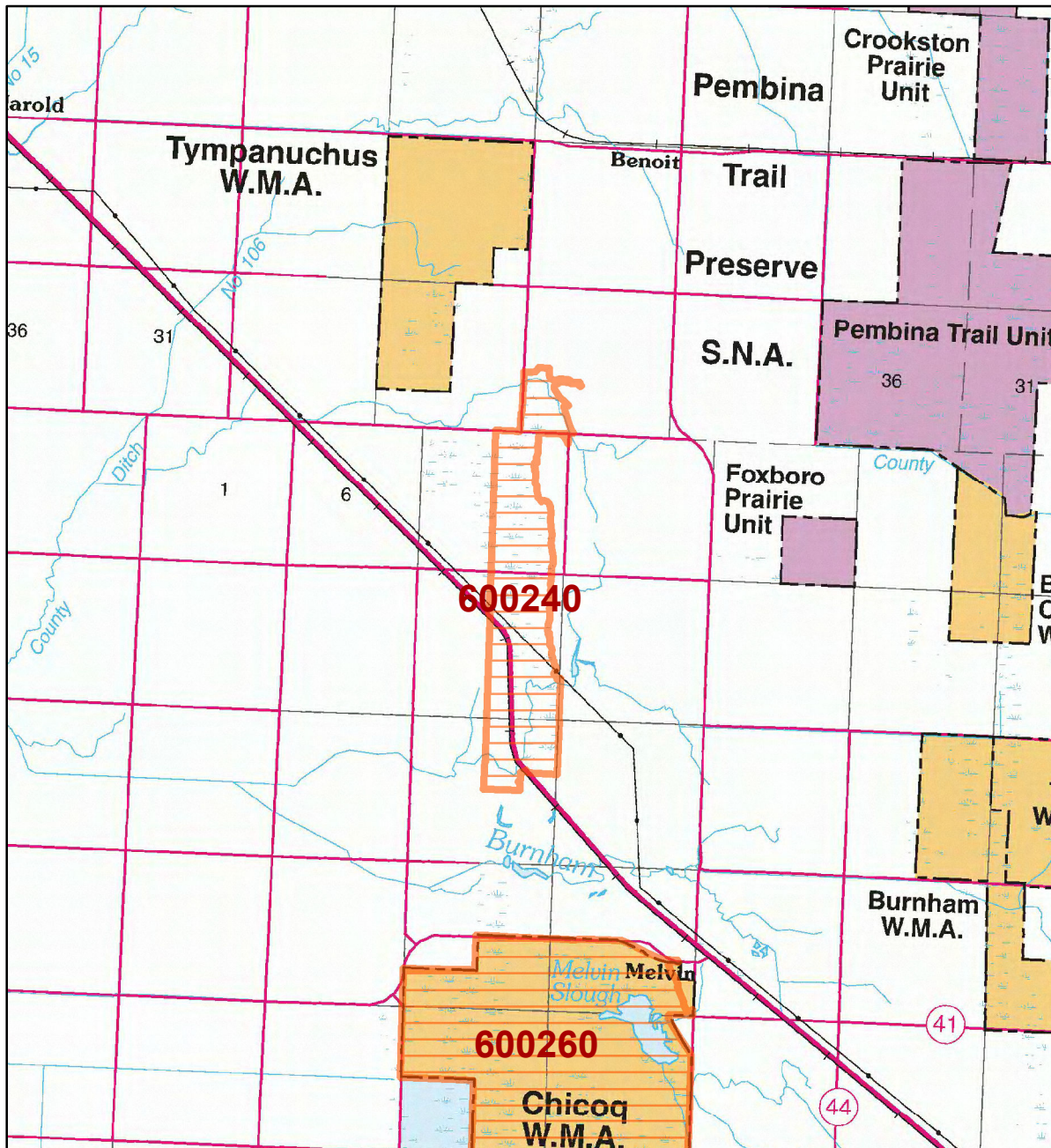
0 0.75 1.5 Miles



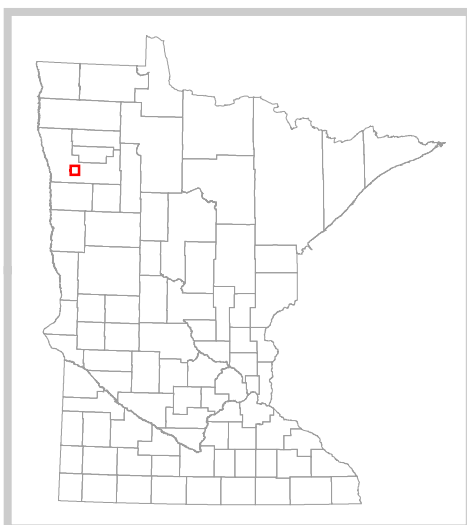


# HCVF Site 600240

## Onstad Beach Ridges, Polk County



- LEGEND**
- HCVF Site**
- MAP EXPLANATION**
- LAND OWNERSHIP**
- County Land
  - Recreation Area under 40 acres
  - State Forest Land
  - State Park and Recreation Land
  - State Wildlife Management Area Land
  - W.M.A.'s under 40 acres
  - State Scientific & Natural Area Land
  - S.N.A.'s under 40 acres
  - National Waterfowl Production Area
  - N.W.P.A.'s under 40 acres
  - National Forest, Park, Wildlife Refuge & Recreation Land
  - Bureau of Indian Affairs Land
- BOUNDARIES**
- County Unit Boundary
  - State Unit Boundary
  - National Unit Boundary
- TRAILS AND FOREST ROADS**
- State Trail
  - State Forest Road
- DESIGNATED WATERWAYS**
- State Trout Stream
  - State Canoe and Boating Route
  - State Wild, Scenic & Recreational River (also designated Canoe & Boating Route)
  - National Wild, Scenic & Recreational River (also designated Canoe & Boating Route)
- FACILITIES**
- D.N.R. Office
  - Travel Information Center
  - Rest Area (with facilities)
  - Rest Area (limited facilities)
  - Campground
  - Watercraft Camping
  - Equestrian Camping
  - Water Access
  - Carry-in Access
  - Dam (on designated canoe route)
  - Fishing Pier
  - Overlook
  - Parking
  - Historic Site
  - Geologic Feature
  - Fish Hatchery
  - Forestry Nursery
  - National Great River Road
  - State Great River Road



The PRIM series was developed using funds provided through the Legislative Commission on Minnesota Resources (LCMR).

Base information was compiled from 1:100,000 series U.S. Geologic Survey planimetric maps.

Facility and ownership information was compiled from the following sources: Minnesota Department of Natural Resources, Minnesota Department of Transportation, State Planning Agency, Minnesota Historical Society and the respective counties.



0 2 4 Miles

Land ownership categories on this map are in some cases outdated. HCVF sites are on DNR-managed land only; DNR HCVF sites have not been identified on other ownerships.



# HCVF Informational Report

Report Run: September 3, 2013

## General Information

**HCVF #:** 600240

**HCVF Name:** Onstad Beach Ridges

**Acres of HCVF site:** 722.29

**County:** Polk

**Data edited by:** Erik Thorson, Becky Marty

**Role:** NW Reg HCVF Team Wildlife and EWR Representatives

**Date edited on:** 2013-08-22

**Corresponding Land Administrator(s):** Wildlife

**Management Unit Name(s) (if applicable):** Thorson Prairie WMA

## HCVF Summary

Site consists of a major beach ridge, its west-facing slope, and terrain just west of the ridge. Surveyed by Robert Dana (1986) and Fred Harris (2008 and 2009). Much of site previously disturbed through hay or pasture management. Some mapped as Agassiz Interbeach Prairie Complex. Five areas of calcareous fen.

### **HCVs known to be present that factored into HCVF designation.**

*FSC expects DNR to maintain HCVs within designated HCVFs. Because HCVF boundaries are not the same as the larger, multi-ownership MBS Sites, this list will differ from the values identified during the MBS Survey.*

TALLGRASS ASPEN PARKLANDS PROVINCE HCVs: 1b (S1 or S2 species): 2 plants; 3a (G1 or G2 plant community): OPp93a (7 acres), UPn23b (42 acres); 3b (S1 or S2 plant community): OPp93a (7 acres), UPn12b (53 acres), UPn23b (42 acres), WPn53a (42 acres); 3c (Special S3 plant community): FDw44, WMs83a.

## Management Considerations

### **Overall management objectives for the entire HCVF:**

Region HCVF Recommendations - Protect/restore hydrologic system; restore hydrology along the road and railroad. - Determine extent of the rare plants; actively maintain and manage the plant communities for the rare plants. - Maintain, restore, and enhance prairie and fen NPCs, esp the rare NPCs. - Use prescribed fire to control tree and shrub encroachment. - Maintain Aspen in a woodland state. - Verify FDw44 subtype.

**Management direction from the following sources was considered in developing the above recommendations:**

2011 Aspen Parklands SFRMP. Mn DOT TH102 road plans.

**Are the HCVs within this HCVF likely to benefit from coordination with adjacent landowner(s)?**

**\_Yes\_**

*This HCVF was flagged by the Regional HCVF Team as warranting cross-ownership coordination efforts. The specific HCVs likely to benefit from such coordination with adjacent landowners are identified below.*

HCV 1b, 3a, 3b, 3c. The rare plants and NPCs extend onto adjacent private and Nature Conservancy lands. The hydrology is effected by the above landowners plus Mn DOT and the RR system.

## General Comments

Excellent opporunities for cooperative createive management with TNC and Mn DOT.

*Reference to rare plants and animals, Minnesota Biological Survey Sites of Biological Significance and mapped native plant communities are records maintained in the Minnesota DNR's Natural Heritage Information System (NHIS). A date of information is associated with each record. The NHIS is continually updated as new information becomes available. The lack of data listed for any geographic area should not be construed to mean that no significant features are present.*

*... Report End ...*