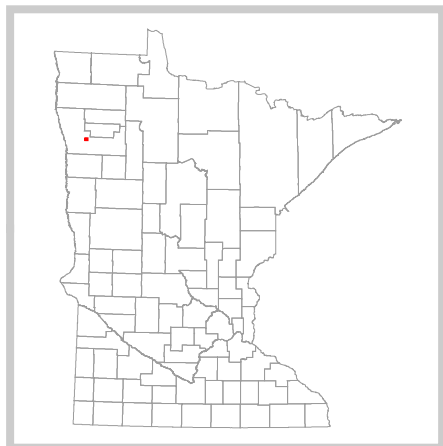
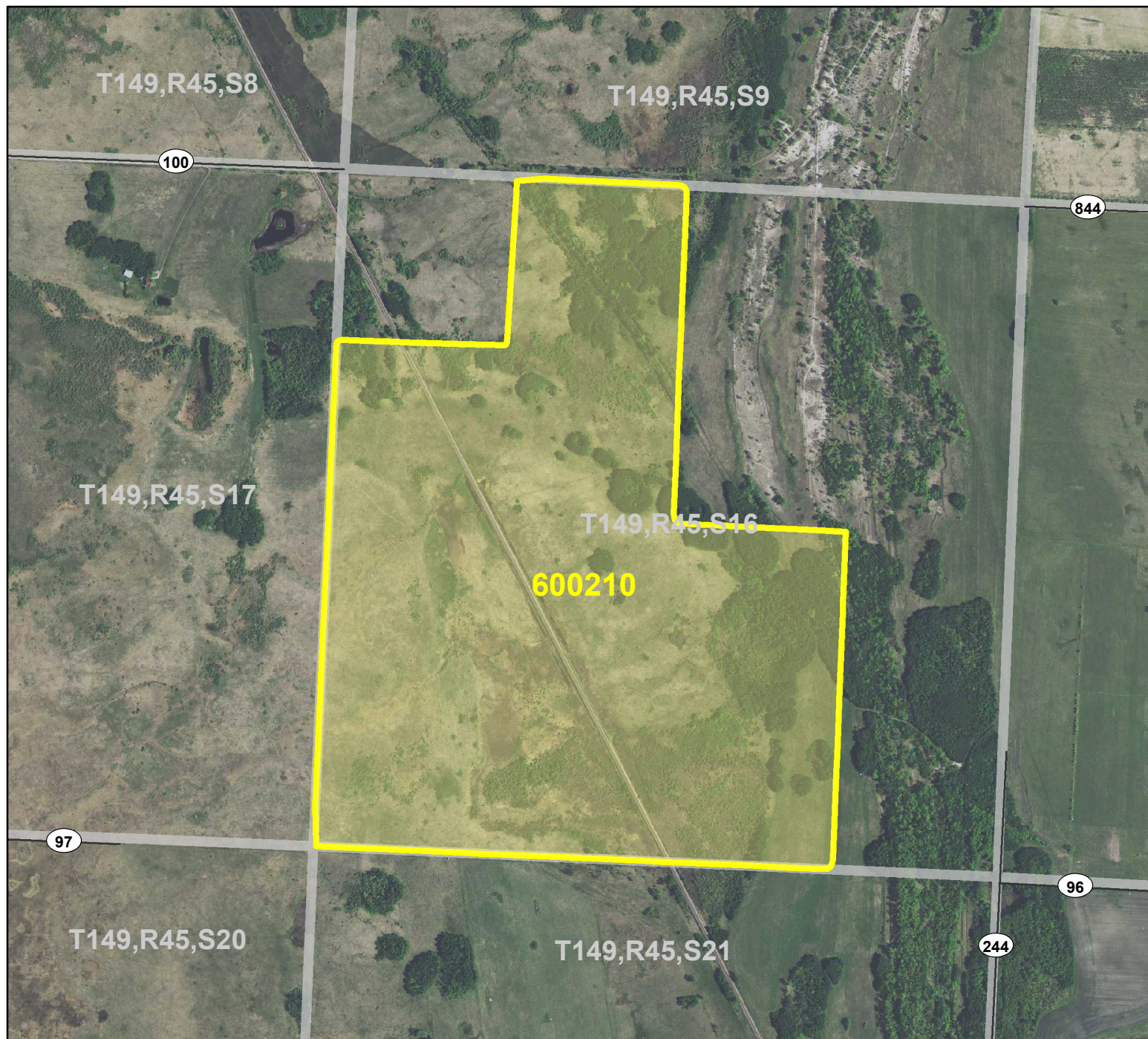




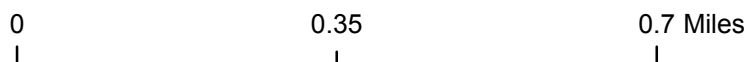
HCVF Site 600210

Kertsonville WMA, Polk County



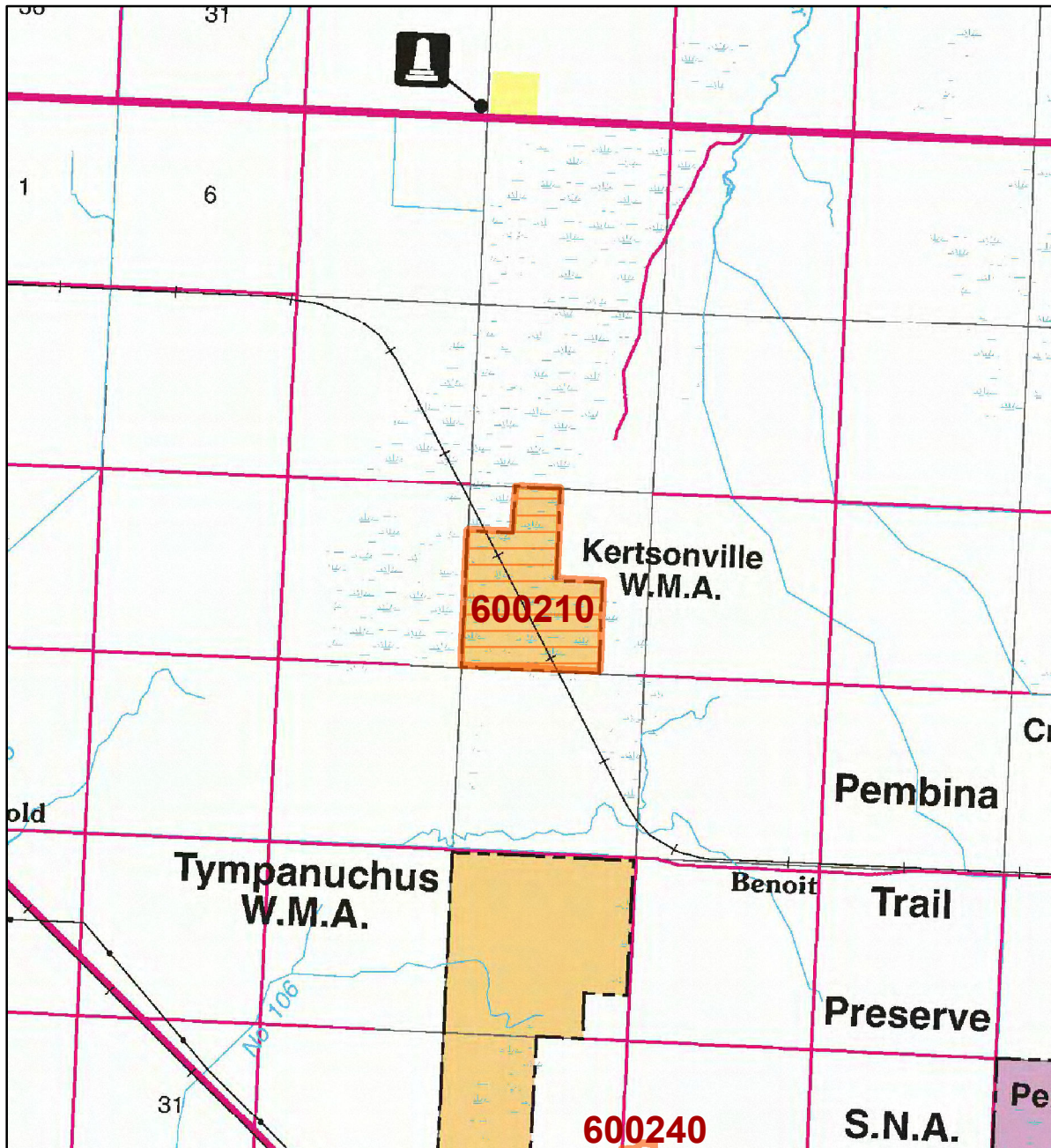
Legend

- Municipal, Township or Other Roads
-  HCVF Site
-  PLS Sections



HCVF Site 600210

Kertsonville WMA, Polk County



LEGEND

HCVF Site

MAP EXPLANATION

LAND OWNERSHIP

- County Land
- Recreation Area under 40 acres
- State Forest Land
- State Park and Recreation Land
- State Wildlife Management Area Land
- W.M.A.'s under 40 acres
- State Scientific & Natural Area Land
- S.N.A.'s under 40 acres
- National Waterfowl Production Area
- N.W.P.A.'s under 40 acres
- National Forest, Park, Wildlife Refuge & Recreation Land
- Bureau of Indian Affairs Land

BOUNDARIES

- County Unit Boundary
- State Unit Boundary
- National Unit Boundary

TRAILS AND FOREST ROADS

- State Trail
- State Forest Road

DESIGNATED WATERWAYS

- State Trout Stream
- State Canoe and Boating Route
- State Wild, Scenic & Recreational River (also designated Canoe & Boating Route)
- National Wild, Scenic & Recreational River (also designated Canoe & Boating Route)

FACILITIES

- D.N.R. Office
- Travel Information Center
- Rest Area (with facilities)
- Rest Area (limited facilities)
- Campground
- Watercraft Camping
- Equestrian Camping
- Water Access
- Carry-in Access
- Dam (on designated canoe route)
- Fishing Pier
- Overlook
- Parking
- Historic Site
- Geologic Feature
- Fish Hatchery
- Forestry Nursery
- National Great River Road
- State Great River Road

NOTE: Some of the features defined in this map explanation may not occur on the map.

The PRIM series was developed using funds provided through the Legislative Commission on Minnesota Resources (LCMR).

Base information was compiled from 1:100,000 series U.S. Geologic Survey planimetric maps.

Facility and ownership information was compiled from the following sources: Minnesota Department of Natural Resources, Minnesota Department of Transportation, State Planning Agency, Minnesota Historical Society and the respective counties.



0 1.5 3 Miles

Land ownership categories on this map are in some cases outdated. HCVF sites are on DNR-managed land only; DNR HCVF sites have not been identified on other ownerships.



HCVF Informational Report

Report Run: September 3, 2013

General Information

HCVF #: 600210

HCVF Name: Kertsonville WMA

Acres of HCVF site: 365.29

County: Polk

Data edited by: Erik Thorson, Becky Marty

Role: NW Reg HCVF Team Wildlife and EWR Representatives

Date edited on: 2013-08-22

Corresponding Land Administrator(s): Wildlife

Management Unit Name(s) (if applicable): Kertsonville WMA

HCVF Summary

Mosaic of wet, mesic & saline prairie west of beach ridge.

HCVs known to be present that factored into HCVF designation.

FSC expects DNR to maintain HCVs within designated HCVFs. Because HCVF boundaries are not the same as the larger, multi-ownership MBS Sites, this list will differ from the values identified during the MBS Survey.

TALLGRASS ASPEN PARKLANDS PROVINCE HCVs: 1b (S1 or S2 species): 1 bird; 1g (Examples of Outstanding Key Habitats): Prairie; 3a (G1 or G2 plant community): OPp93a (8 acres), UPn23b (12 acres), WPn53d (6 acres); 3b (S1 or S2 plant community): OPp93a (8 acres), UPn12b (4 acres), UPn23b (12 acres), WPn53a (94 acres), WPn53d (6 acres); 3c (Special S3 plant community): FDw44, WMs83a, WPn53b.

Management Considerations

Overall management objectives for the entire HCVF:

Region HCVF Recommendations - Maintain/enhance the landscape complex of openland habitats and their associated native plant communities. - Restore the degraded upland prairie and fen communities. - Maintain and protect localized habitat; especially providing for short vegetation in or adjacent to shallow pools of open water. - Reduce shrub density in wetlands, especially sedge meadows. - Discriminate against aspen. Verify which FDw44 subtype is here. - Fire can be a viable method to promote the above objectives. - Avoid any operations that may compromise the natural hydrology of this system.

Management direction from the following sources was considered in developing the above recommendations:

Are the HCVs within this HCVF likely to benefit from coordination with adjacent landowner(s)?

Yes

This HCVF was flagged by the Regional HCVF Team as warranting cross-ownership coordination efforts. The specific HCVs likely to benefit from such coordination with adjacent landowners are identified below.

HCV 1b, 1g, 3a, 3b, 3c. The rare NPCs and multiple SGCNs extend onto adjacent private and Nature Conservancy lands.

General Comments

Very nice mixed system and manageable with cooperative adjacent landowners on multiple sides.

Reference to rare plants and animals, Minnesota Biological Survey Sites of Biological Significance and mapped native plant communities are records maintained in the Minnesota DNR's Natural Heritage Information System (NHIS). A date of information is associated with each record. The NHIS is continually updated as new information becomes available. The lack of data listed for any geographic area should not be construed to mean that no significant features are present.

... Report End ...