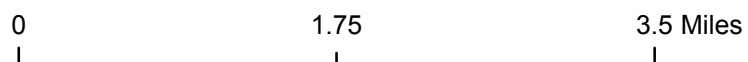
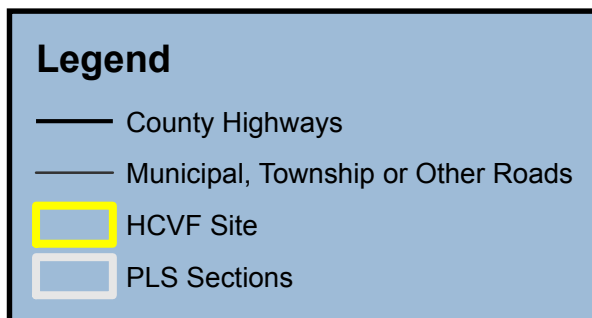
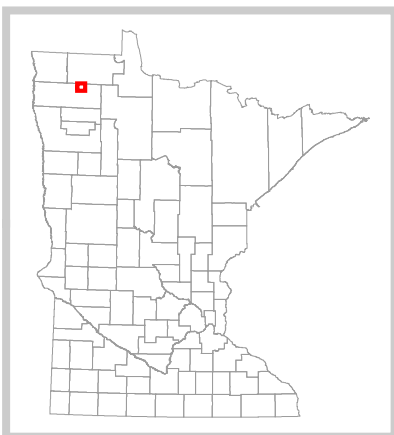
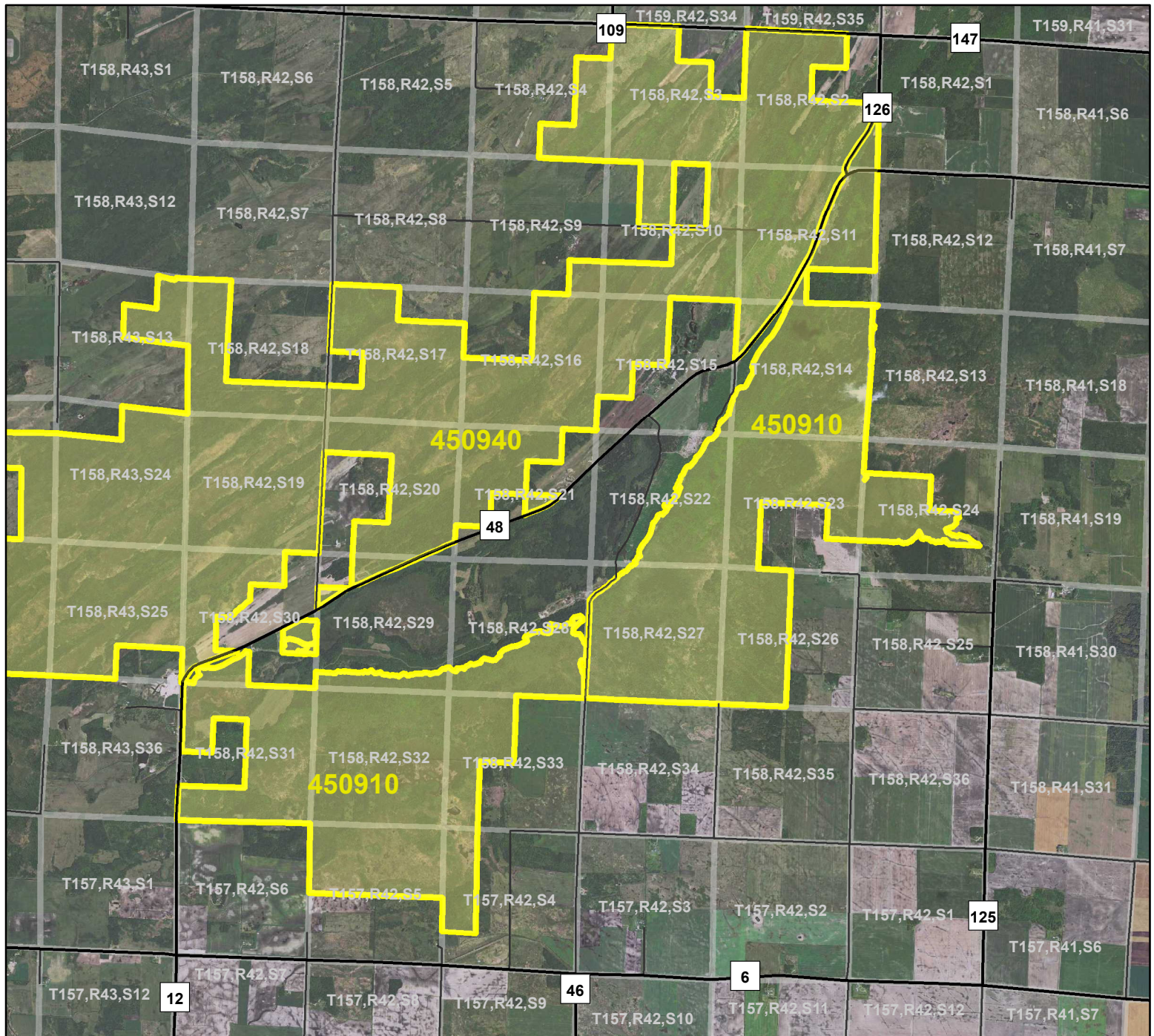


# HCVF Site 450910

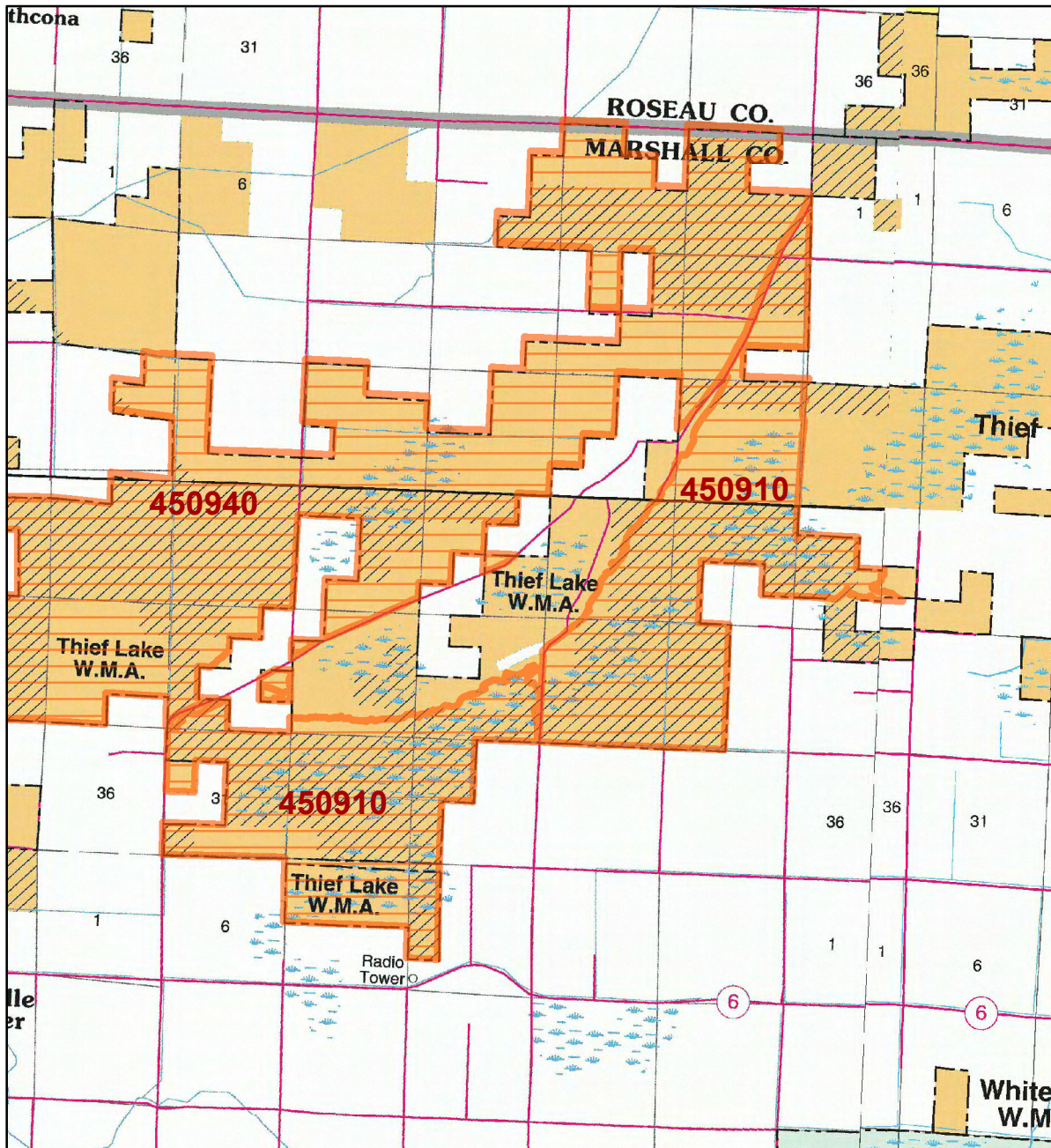
## Como 31, Marshall County





# HCVF Site 450910

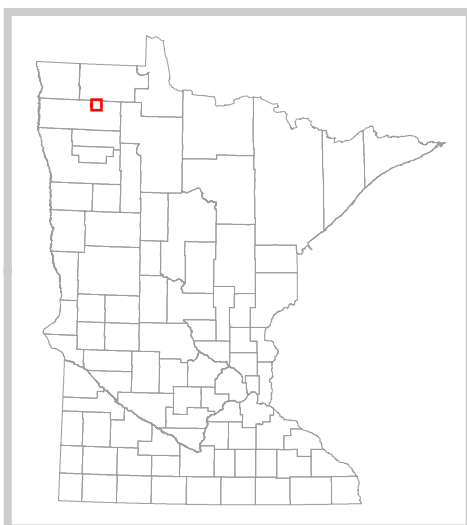
## Como 31, Marshall County



### LEGEND

- HCVF Site
- MAP EXPLANATION**
- LAND OWNERSHIP**
  - County Land
  - Recreation Area under 40 acres
  - State Forest Land
  - State Park and Recreation Land
  - State Wildlife Management Area Land
  - W.M.A.'s under 40 acres
  - State Scientific & Natural Area Land
  - S.N.A.'s under 40 acres
  - National Waterfowl Production Area
  - N.W.P.A.'s under 40 acres
  - National Forest, Park, Wildlife Refuge & Recreation Land
  - Bureau of Indian Affairs Land
- BOUNDARIES**
  - County Unit Boundary
  - State Unit Boundary
  - National Unit Boundary
- TRAILS AND FOREST ROADS**
  - State Trail
  - State Forest Road
- DESIGNATED WATERWAYS**
  - State Trout Stream
  - State Canoe and Boating Route
  - State Wild, Scenic & Recreational River (also designated Canoe & Boating Route)
  - National Wild, Scenic & Recreational River (also designated Canoe & Boating Route)
- FACILITIES**
  - D.N.R. Office
  - Travel Information Center
  - Rest Area (with facilities)
  - Rest Area (limited facilities)
  - Campground
  - Watercraft Camping
  - Equestrian Camping
  - Water Access
  - Carry-in Access
  - Dam (on designated canoe route)
  - Fishing Pier
  - Overlook
  - Parking
  - Historic Site
  - Geologic Feature
  - Fish Hatchery
  - Forestry Nursery
  - National Great River Road
  - State Great River Road

NOTE: Some of the features defined in this map explanation may not occur on the map.



The PRIM series was developed using funds provided through the Legislative Commission on Minnesota Resources (LCMR).

Base information was compiled from 1:100,000 series U.S. Geologic Survey planimetric maps.

Facility and ownership information was compiled from the following sources: Minnesota Department of Natural Resources, Minnesota Department of Transportation, State Planning Agency, Minnesota Historical Society and the respective counties.



0 2.25 4.5 Miles

Land ownership categories on this map are in some cases outdated. HCVF sites are on DNR-managed land only; DNR HCVF sites have not been identified on other ownerships.



# HCVF Informational Report

Report Run: September 3, 2013

## General Information

**HCVF #: 450910**

**HCVF Name:** Como 31

**Acres of HCVF site:** 4859.63

**County:** Marshall

**Data edited by:** Becky Marty, Erik Thorson, Mike Locke

**Role:** NW Reg HCVF Team Forestry, EWR, and Wildlife Representatives

**Date edited on:** 2013-08-22

**Corresponding Land Administrator(s):** Wildlife

**Management Unit Name(s) (if applicable):** Thief Lake WMA

## HCVF Summary

Complex of oak and wetlands along Dorman Ridge, mostly state owned. Some wildlife food plots. Fens bordered by zones of conifers.

### **HCVs known to be present that factored into HCVF designation.**

*FSC expects DNR to maintain HCVs within designated HCVFs. Because HCVF boundaries are not the same as the larger, multi-ownership MBS Sites, this list will differ from the values identified during the MBS Survey.*

TALLGRASS ASPEN PARKLANDS PROVINCE HCVs: 1e (Rare species concentrations): 18 birds; 1g (Examples of outstanding key habitats): prairie, shrub/woodland-upland (brush prairie), wetland-nonforest (wet prairie); 2a TAP (large natural vegetation complex): 4,860 acres; 2bii (forest block in ag landscape): yes; 3a (G1 or G2 plant community): UPn13c (17 acres); 3b (S1 or S2 plant community): FDw24a (5 acres), UPn12b (26 acres); 3c (Special S3 plant community): FPw63a (64 acres), OPp91 (700 acres).

## Management Considerations

### **Overall management objectives for the entire HCVF:**

Region HCVF Recommendations - Maintain/enhance the landscape complex of brushland habitats and their associated native plant communities. - Maintain diverse ground cover; maintain and protect localized habitat. - Verify rare species and protect habitat; conduct SGCN analysis for habitat needs. - Actively manage rare key habitats and plant communities to maintain, enhance, and increase where necessary. - Fire can be a viable method to promote the above objectives. - Restore habitats and hydrology where necessary.

**Management direction from the following sources was considered in developing the above recommendations:**

**Are the HCVs within this HCVF likely to benefit from coordination with adjacent landowner(s)?**

**\_Yes\_**

*This HCVF was flagged by the Regional HCVF Team as warranting cross-ownership coordination efforts. The specific HCVs likely to benefit from such coordination with adjacent landowners are identified below.*

HCV 1e, 1g, 2a, 2bii, 3a, 3b, 3c. Multiple rare species, NPCs, and SGCN extend onto adjacent private lands.

## General Comments

There could be some future conflicts due to some of this site being underlain with gravel and much of it Trust.

*Reference to rare plants and animals, Minnesota Biological Survey Sites of Biological Significance and mapped native plant communities are records maintained in the Minnesota DNR's Natural Heritage Information System (NHIS). A date of information is associated with each record. The NHIS is continually updated as new information becomes available. The lack of data listed for any geographic area should not be construed to mean that no significant features are present.*

... Report End ...