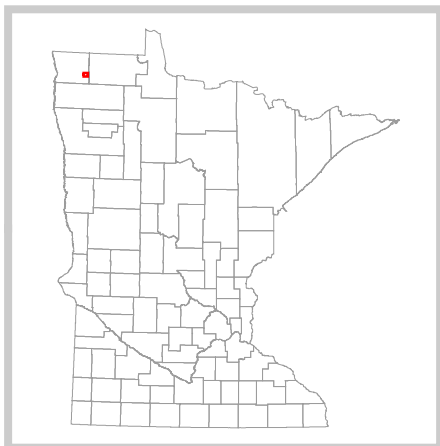
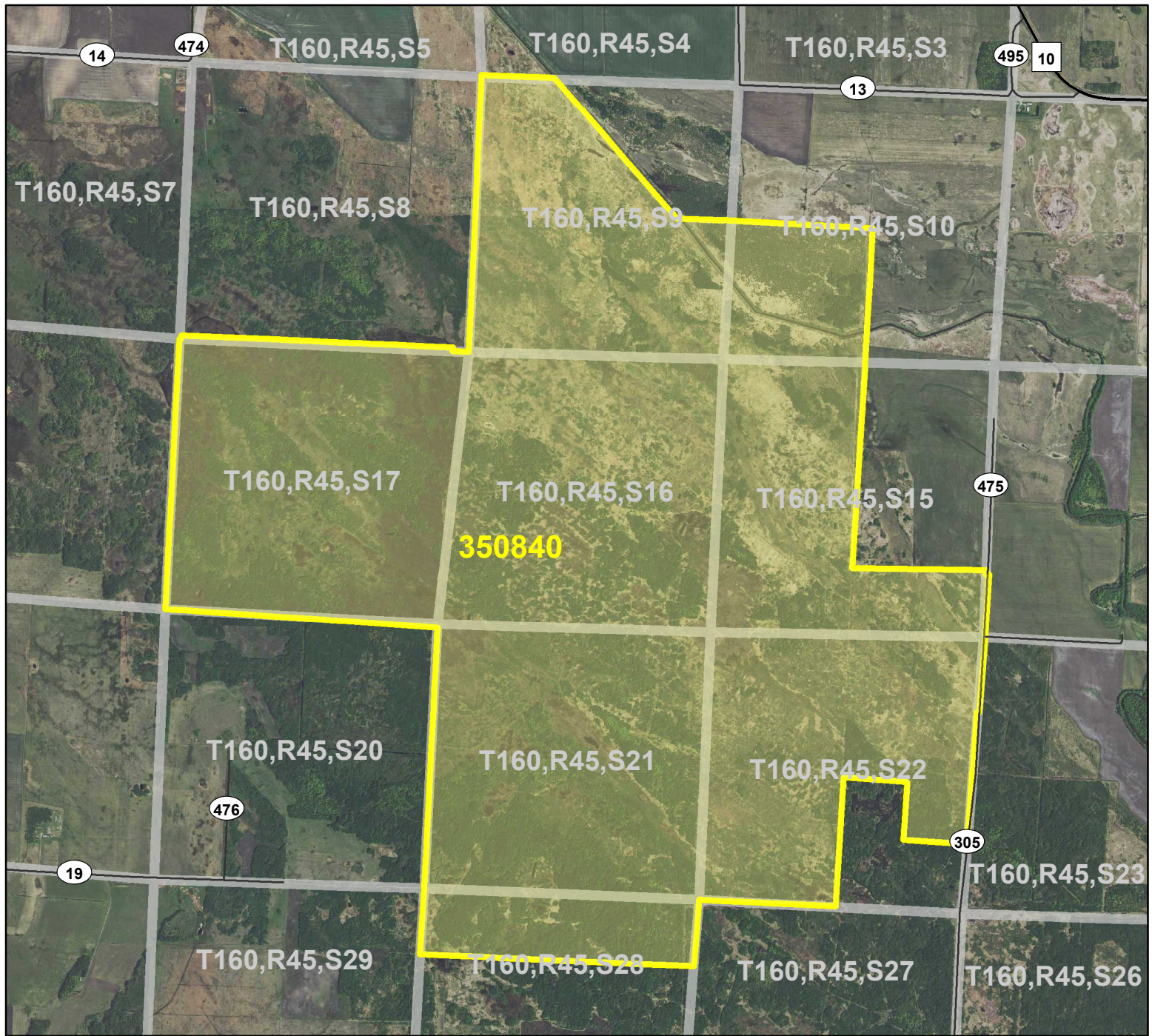


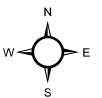
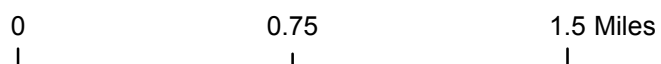
HCVF Site 350840

Pelan Parkland, Kittson County



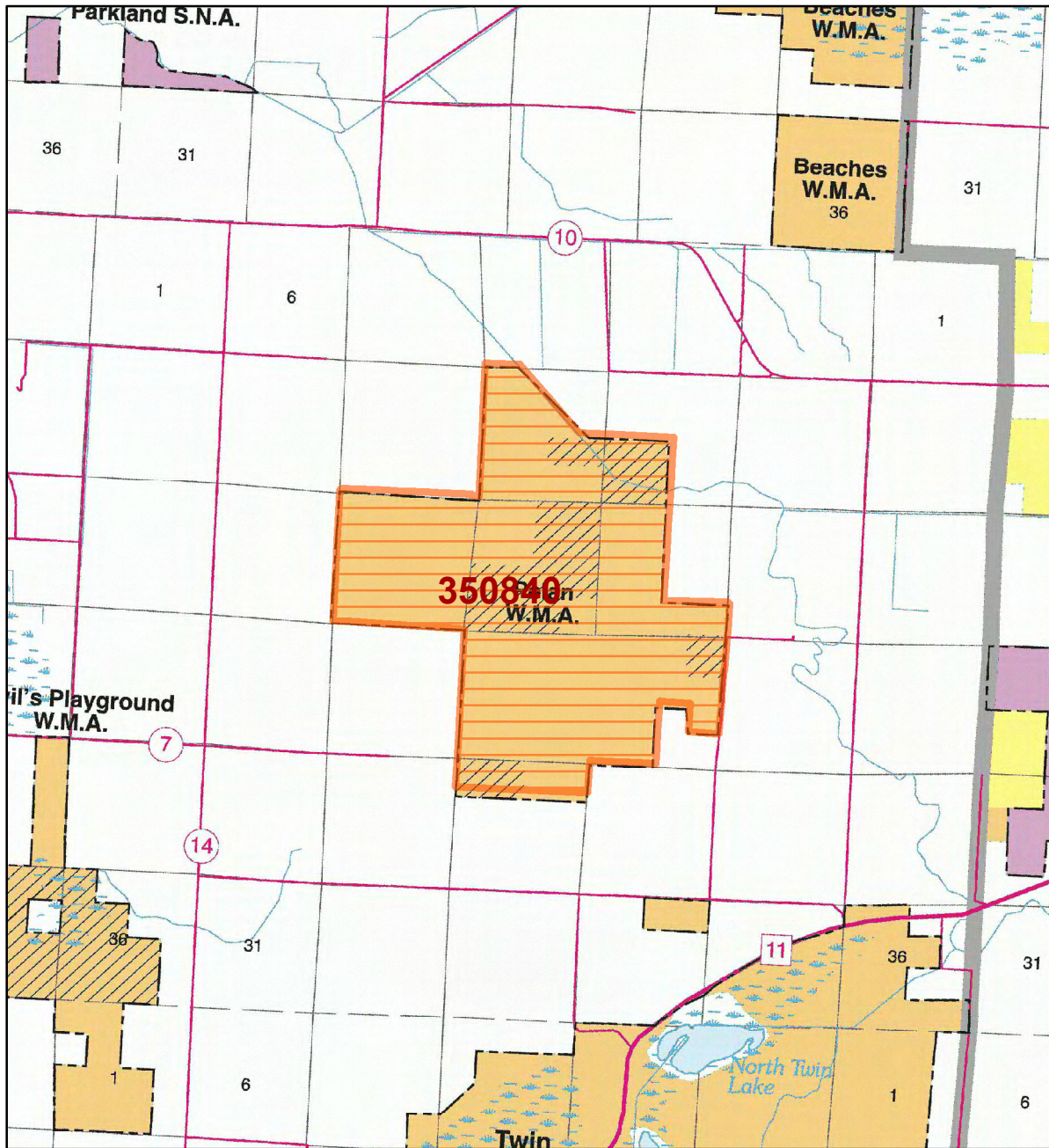
Legend

- County Highways
- Municipal, Township or Other Roads
- HCVF Site
- PLS Sections

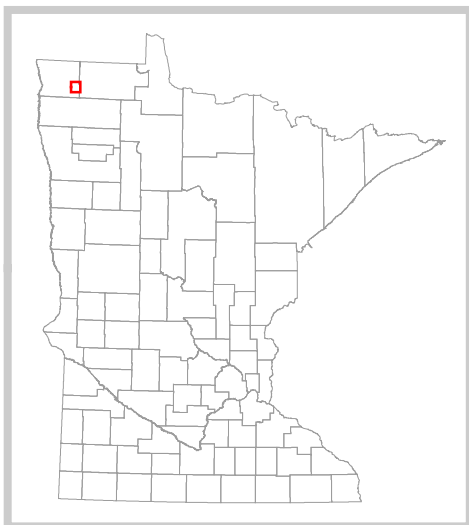


HCVF Site 350840

Pelan Parkland, Kittson County



- LEGEND**
- HCVF Site**
- MAP EXPLANATION**
- LAND OWNERSHIP**
- County Land
 - Recreation Area under 40 acres
 - State Forest Land
 - State Park and Recreation Land
 - State Wildlife Management Area Land
 - W.M.A.'s under 40 acres
 - State Scientific & Natural Area Land
 - S.N.A.'s under 40 acres
 - National Waterfowl Production Area
 - N.W.P.A.'s under 40 acres
 - National Forest, Park, Wildlife Refuge & Recreation Land
 - Bureau of Indian Affairs Land
- BOUNDARIES**
- County Unit Boundary
 - State Unit Boundary
 - National Unit Boundary
- TRAILS AND FOREST ROADS**
- State Trail
 - State Forest Road
- DESIGNATED WATERWAYS**
- State Trout Stream
 - State Canoe and Boating Route
 - State Wild, Scenic & Recreational River (also designated Canoe & Boating Route)
 - National Wild, Scenic & Recreational River (also designated Canoe & Boating Route)
- FACILITIES**
- D.N.R. Office
 - Travel Information Center
 - Rest Area (with facilities)
 - Rest Area (limited facilities)
 - Campground
 - Watercraft Camping
 - Equestrian Camping
 - Water Access
 - Carry-in Access
 - Dam (on designated canoe route)
 - Fishing Pier
 - Overlook
 - Parking
 - Historic Site
 - Geologic Feature
 - Fish Hatchery
 - Forestry Nursery
 - National Great River Road
 - State Great River Road



The PRIM series was developed using funds provided through the Legislative Commission on Minnesota Resources (LCMR).

Base information was compiled from 1:100,000 series U.S. Geologic Survey planimetric maps.

Facility and ownership information was compiled from the following sources: Minnesota Department of Natural Resources, Minnesota Department of Transportation, State Planning Agency, Minnesota Historical Society and the respective counties.



0 2.25 4.5 Miles

Land ownership categories on this map are in some cases outdated. HCVF sites are on DNR-managed land only; DNR HCVF sites have not been identified on other ownerships.



HCVF Informational Report

Report Run: September 3, 2013

General Information

HCVF #: 350840

HCVF Name: Pelan Parkland

Acres of HCVF site: 3672.45

County: Kittson

Data edited by: Erik Thorson, Becky Marty

Role: NW Reg HCVF Team Wildlife and EWR Representatives

Date edited on: 2013-08-22

Corresponding Land Administrator(s): Wildlife

Management Unit Name(s) (if applicable): Pelan WMA

HCVF Summary

MBS Site 84 is the core of a landscape-scale macrosite, and includes all of the Pelan WMA at the time of survey, plus some trust land and private tracts. It is nearly level, with a subtle pattern of NW-trending linear swell-and-swale topography. Although parts have been degraded by grazing (some still occurring at the time of the survey), overall it is a high-quality, very large remnant of an aspen-parkland mosaic of brush-prairie, woodland, and wetland. The brush-prairie is wet and wet-mesic, with some mesic places (these are the most degraded spots). The woodland is aspen woodland, primarily young trees and saplings, but bur oaks are not uncommon, with occasional open-grown individuals of moderate size. The woodland occurs mostly as small patches in a brush-prairie matrix. There is one area of slightly different character where the woodland patches predominate that is continuous with a similar area on the next site south within the macrosite. The wetland component is predominantly wet meadow, sometimes tending to rich fen. These wetlands occur as small to medium size patches. Site 82 is south end of large expanse of aspen parkland, all private. Some well-developed woodland, becoming forest, large area of an intricate mosaic of aspen woodland and prairie that is predominantly woodland, and large area that is predominantly brush-prairie with lesser amounts of scattered woodland. Low relief, with subtle NW-trending swell-and-swale topography.

HCVs known to be present that factored into HCVF designation.

FSC expects DNR to maintain HCVs within designated HCVFs. Because HCVF boundaries are not the same as the larger, multi-ownership MBS Sites, this list will differ from the values identified during the MBS Survey.

TALLGRASS ASPEN PARKLANDS PROVINCE HCVs: 1a (G1 or G2 species): 1 butterfly; 1b (S1 or S2 species): 1 butterfly; 1g (Examples of outstanding key habitats): Shrub/Woodland-Upland (Brush prairie), Wetland-Nonforest (Wet Prairie); 2a - TAP (large natural vegetation complex): yes, 3,672 acres; 3a (G1 or G2 plant community): UPn23a; 3b (S1 or S2 plant community): UPn23a; 3c (Special S3 plant community): FDw44a, WMP73a, WPn53b.

Management Considerations

Overall management objectives for the entire HCVF:

Region HCVF Recommendations - Use less intensive methods to manage native prairie and reduce tree and shrub encroachment, such as prescribed burning in smaller units on a rotational basis to maintain and enhance the Endangered butterfly and its habitat. - Maintain/enhance the landscape complex of brushland and openland habitats and their associated native plant communities. - Verify the sizes of all rare NPCs. Manage them with fire, where possible.

Management direction from the following sources was considered in developing the above recommendations:

2011 Aspen Parklands SFRMP

Are the HCVs within this HCVF likely to benefit from coordination with adjacent landowner(s)?

Yes

This HCVF was flagged by the Regional HCVF Team as warranting cross-ownership coordination efforts. The specific HCVs likely to benefit from such coordination with adjacent landowners are identified below.

HCV 1a, 1b, 1g, 2a, 3a, 3b, 3c. The rare butterfly, special concern plants and key habitats for SGCNs extend onto adjacent Federal and private lands.

General Comments

No information entered.

Reference to rare plants and animals, Minnesota Biological Survey Sites of Biological Significance and mapped native plant communities are records maintained in the Minnesota DNR's Natural Heritage Information System (NHIS). A date of information is associated with each record. The NHIS is continually updated as new information becomes available. The lack of data listed for any geographic area should not be construed to mean that no significant features are present.

... Report End ...