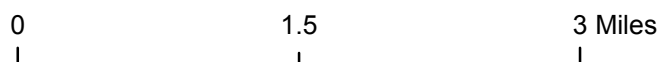
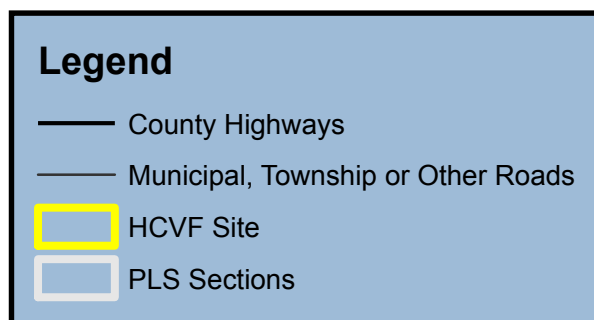
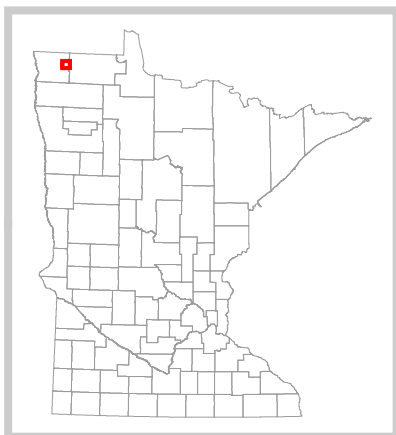
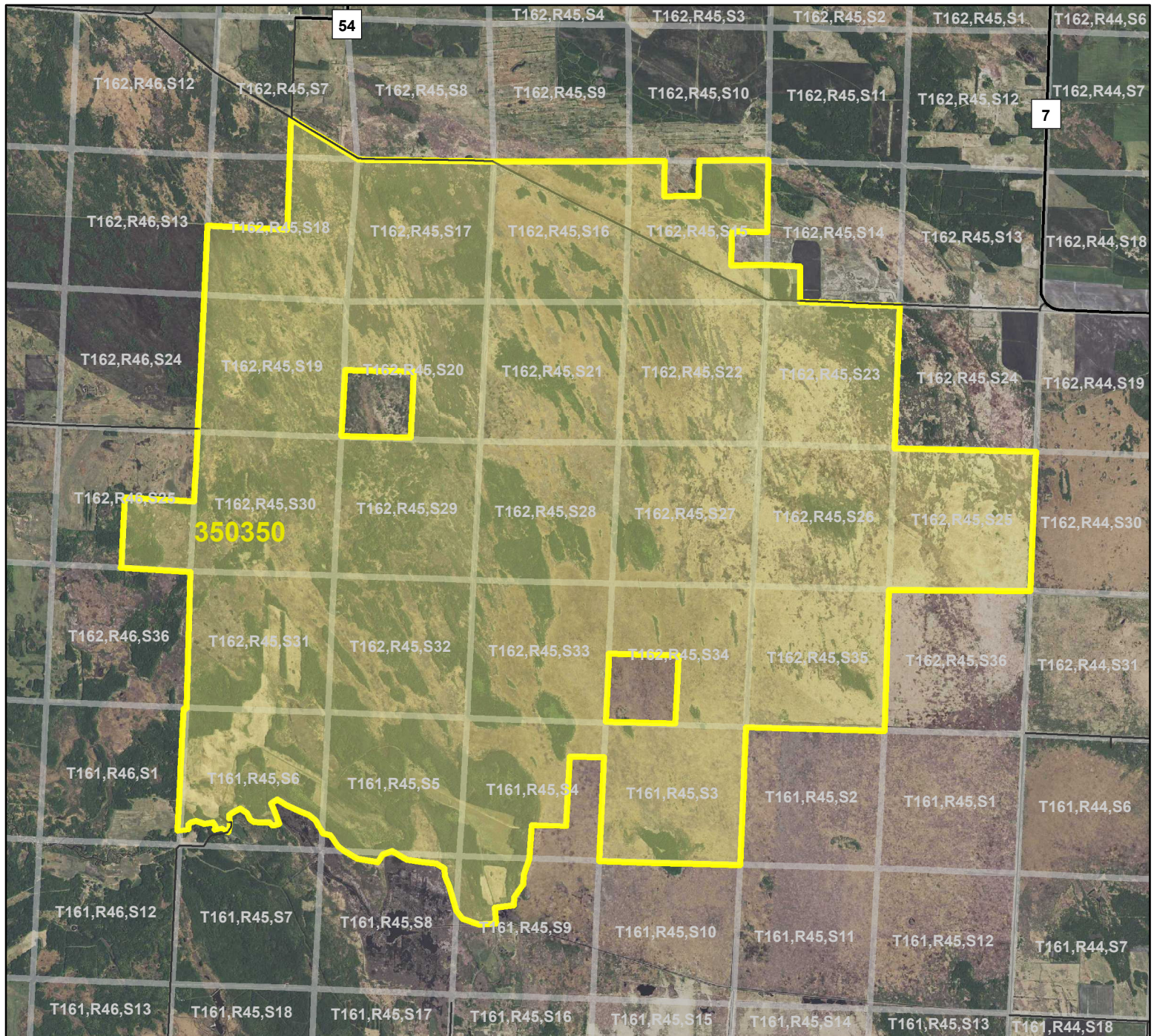


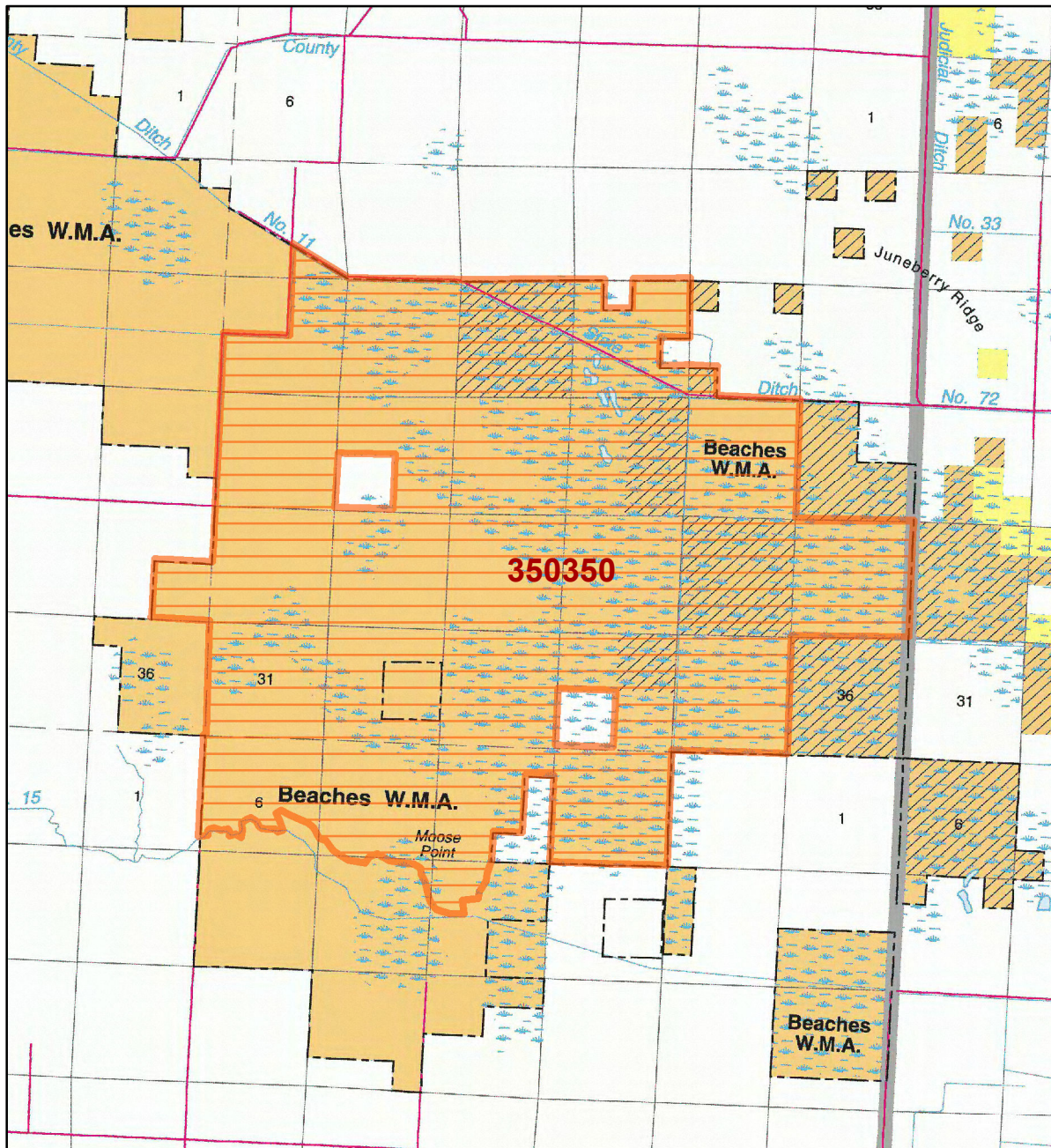
HCVF Site 350350

Beaches Lake, Kittson County



HCVF Site 350350

Beaches Lake, Kittson County



LEGEND

HCVF Site

MAP EXPLANATION

LAND OWNERSHIP

- County Land
- Recreation Area under 40 acres
- State Forest Land
- State Park and Recreation Land
- State Wildlife Management Area Land
- W.M.A.'s under 40 acres
- State Scientific & Natural Area Land
- S.N.A.'s under 40 acres
- National Waterfowl Production Area
- N.W.P.A.'s under 40 acres
- National Forest, Park, Wildlife Refuge & Recreation Land
- Bureau of Indian Affairs Land

BOUNDARIES

- County Unit Boundary
- State Unit Boundary
- National Unit Boundary

TRAILS AND FOREST ROADS

- State Trail
- State Forest Road

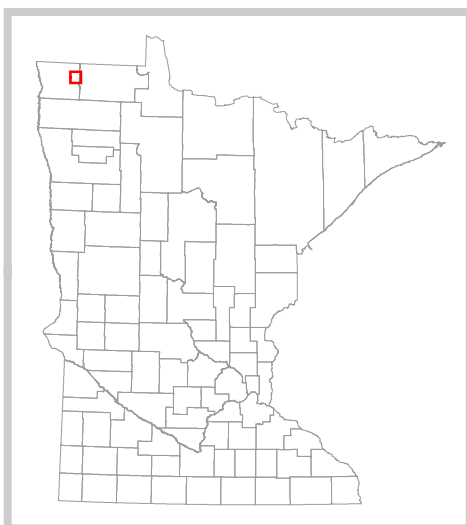
DESIGNATED WATERWAYS

- State Trout Stream
- State Canoe and Boating Route
- State Wild, Scenic & Recreational River (also designated Canoe & Boating Route)
- National Wild, Scenic & Recreational River (also designated Canoe & Boating Route)

FACILITIES

- D.N.R. Office
- Travel Information Center
- Rest Area (with facilities)
- Rest Area (limited facilities)
- Campground
- Watercraft Camping
- Equestrian Camping
- Water Access
- Carry-in Access
- Dam (on designated canoe route)
- Fishing Pier
- Overlook
- Parking
- Historic Site
- Geologic Feature
- Fish Hatchery
- Forestry Nursery
- National Great River Road
- State Great River Road

NOTE: Some of the features defined in this map explanation may not occur on the map.



The PRIM series was developed using funds provided through the Legislative Commission on Minnesota Resources (LCMR).

Base information was compiled from 1:100,000 series U.S. Geologic Survey planimetric maps.

Facility and ownership information was compiled from the following sources: Minnesota Department of Natural Resources, Minnesota Department of Transportation, State Planning Agency, Minnesota Historical Society and the respective counties.



0 2.5 5 Miles

Land ownership categories on this map are in some cases outdated. HCVF sites are on DNR-managed land only; DNR HCVF sites have not been identified on other ownerships.



HCVF Informational Report

Report Run: September 3, 2013

General Information

HCVF #: 350350

HCVF Name: Beaches Lake

Acres of HCVF site: 15053.44

County: Kittson

Data edited by: Erik Thorson, Becky Marty

Role: NW Reg HCVF Team Wildlife and EWR Representatives

Date edited on: 2013-08-22

Corresponding Land Administrator(s): Wildlife

Management Unit Name(s) (if applicable): Beaches WMA

HCVF Summary

Landscape scale of aspen parklands mosaic with large rich fens, shrub swamps, marsh, sandy pools on mineral substrate, and wet aspen woods in wetter areas. Areas of mineral soils ridges with areas of mesic to wet brush prairie. Oak savanna areas.

HCVs known to be present that factored into HCVF designation.

FSC expects DNR to maintain HCVs within designated HCVFs. Because HCVF boundaries are not the same as the larger, multi-ownership MBS Sites, this list will differ from the values identified during the MBS Survey.

TALLGRASS ASPEN PARKLANDS PROVINCE HCVs: 1b (S1 or S2 species): 1 bird, 1 plant; 1e (Rare species concentration): birds, plants; 1f (Taxonomic group concentration): 18 birds; 1g (Examples of outstanding key habitats): Wetland-Nonforest (Wet prairie); 2a - TAP (Large natural vegetation complex): 15,054 acres; 3a (G1 or G2 plant community): UPn12c (118 acres); 3b (S1 or S2 plant community): UPn12c (118 acres); 3c (Special S3 plant community): OPp91b, WMp73a.

Management Considerations

Overall management objectives for the entire HCVF:

Region HCVF Recommendations - Maintain/enhance the landscape complex of brushland and openland habitats and their associated native plant communities. - Maintain and protect localized habitat; especially providing for short vegetation in or adjacent to shallow pools of open water. - Maintain and enhance the rare plant communities. Verify potential UPn12b. - Reduce shrub density in wetlands, especially sedge meadows. - Discriminate against aspen, - Fire can be a viable method to promote the above objectives. - Validate occurrence and location of SGCNs and S1/S2 spp. - Avoid any operations that may compromise the natural hydrology or water levels of this system.

Management direction from the following sources was considered in developing the above recommendations:

2011 Aspen Parklands SFRMP.

Are the HCVs within this HCVF likely to benefit from coordination with adjacent landowner(s)?

Yes

This HCVF was flagged by the Regional HCVF Team as warranting cross-ownership coordination efforts. The specific HCVs likely to benefit from such coordination with adjacent landowners are identified below.

HCV 1b, 1e, 1f, 1g, 2a, 3a. Multiple rare species, NPCs, and SGCNs extend onto adjacent private, The Nature Conservancy, and industrial lands.

General Comments

No information entered.

Reference to rare plants and animals, Minnesota Biological Survey Sites of Biological Significance and mapped native plant communities are records maintained in the Minnesota DNR's Natural Heritage Information System (NHIS). A date of information is associated with each record. The NHIS is continually updated as new information becomes available. The lack of data listed for any geographic area should not be construed to mean that no significant features are present.

... Report End ...