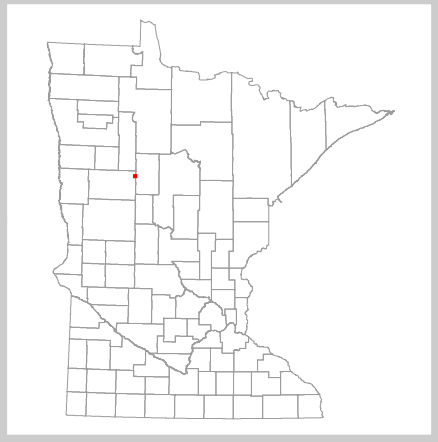
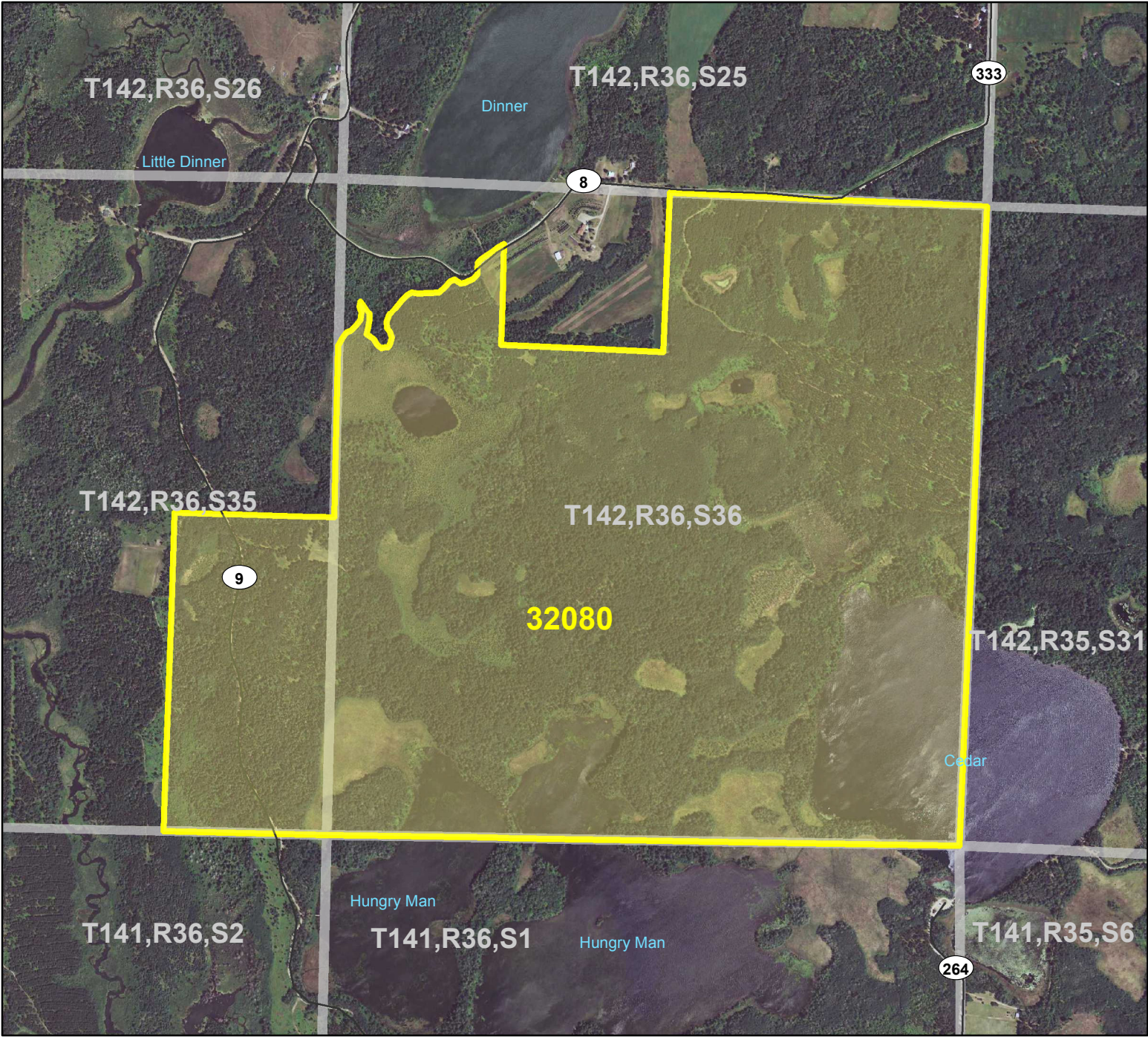


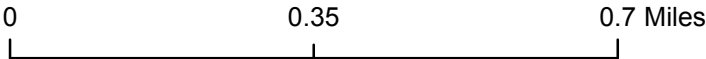
HCVF Site 32080

Hungry Man, Becker County



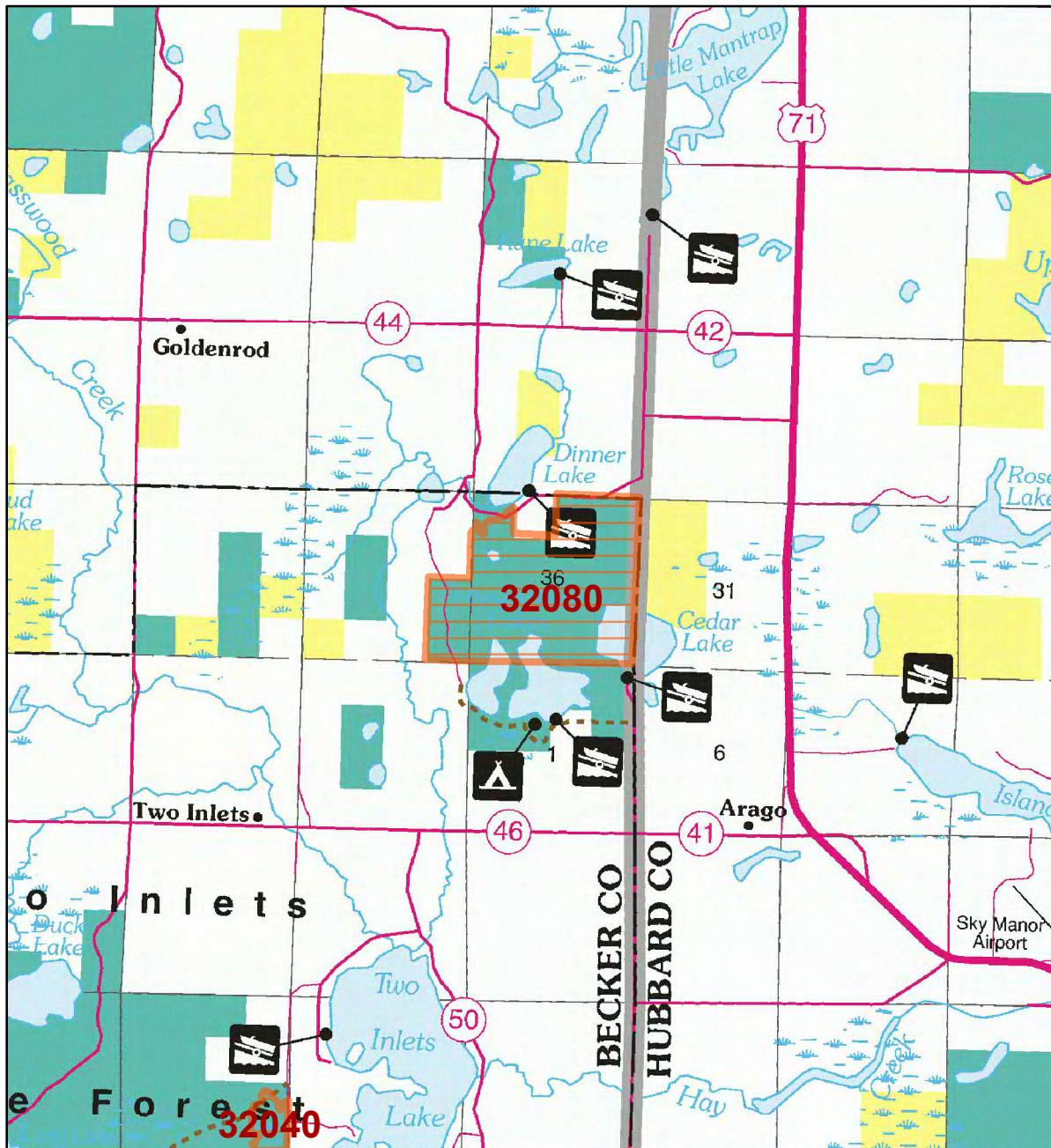
Legend

- Municipal, Township or Other Roads
- HCVF Site
- PLS Sections



HCVF Site 32080

Hungry Man, Becker County



LEGEND

HCVF Site

MAP EXPLANATION

LAND OWNERSHIP

- County Land
- Recreation Area under 40 acres
- State Forest Land
- State Park and Recreation Land
- State Wildlife Management Area Land
- W.M.A.'s under 40 acres
- State Scientific & Natural Area Land
- S.N.A.'s under 40 acres
- National Waterfowl Production Area
- N.W.P.A.'s under 40 acres
- National Forest, Park, Wildlife Refuge & Recreation Land
- Bureau of Indian Affairs Land

BOUNDARIES

- County Unit Boundary
- State Unit Boundary
- National Unit Boundary

TRAILS AND FOREST ROADS

- State Trail
- State Forest Road

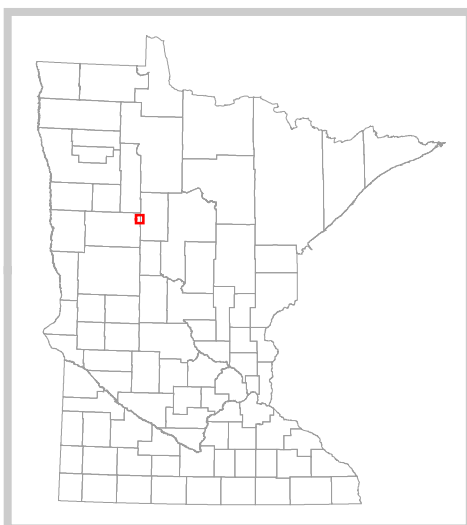
DESIGNATED WATERWAYS

- State Trout Stream
- State Canoe and Boating Route
- State Wild, Scenic & Recreational River (also designated Canoe & Boating Route)
- National Wild, Scenic & Recreational River (also designated Canoe & Boating Route)

FACILITIES

- D.N.R. Office
- Travel Information Center
- Rest Area (with facilities)
- Rest Area (limited facilities)
- Campground
- Watercraft Camping
- Equestrian Camping
- Water Access
- Carry-in Access
- Dam (on designated canoe route)
- Fishing Pier
- Overlook
- Parking
- Historic Site
- Geologic Feature
- Fish Hatchery
- Forestry Nursery
- National Great River Road
- State Great River Road

NOTE: Some of the features defined in this map explanation may not occur on the map.



The PRIM series was developed using funds provided through the Legislative Commission on Minnesota Resources (LCMR).

Base information was compiled from 1:100,000 series U.S. Geologic Survey planimetric maps.

Facility and ownership information was compiled from the following sources: Minnesota Department of Natural Resources, Minnesota Department of Transportation, State Planning Agency, Minnesota Historical Society and the respective counties.



0 1.75 3.5 Miles

Land ownership categories on this map are in some cases outdated. HCVF sites are on DNR-managed land only; DNR HCVF sites have not been identified on other ownerships.



HCVF Informational Report

Report Run: September 3, 2013

General Information

HCVF #: 32080

HCVF Name: Hungry Man

Acres of HCVF site: 648.60

County: Becker

Data edited by: Becky Marty, Erik Thorson

Role: NW Reg HCVF Team EWR and Wildlife Representatives

Date edited on: 2013-08-22

Corresponding Land Administrator(s): Forestry

Management Unit Name(s) (if applicable): Two Inlets State Forest

HCVF Summary

Rugged terrain with large patches of rich spruce swamp, old growth pine (FDc34a), jack pine woodland (FDc23a, FDc24a), diverse high-quality forested and non-forested wetland communities, and mesic hardwood forest. Several rare species and extensive undeveloped lakeshores. One of most important sites in Pine Moraines & Outwash Plains Subsection.

HCVs known to be present that factored into HCVF designation.

FSC expects DNR to maintain HCVs within designated HCVFs. Because HCVF boundaries are not the same as the larger, multi-ownership MBS Sites, this list will differ from the values identified during the MBS Survey.

EASTERN BROADLEAF FOREST PROVINCE HCVs: 1b (S1 or S2 species): 1 orchid; 2b - EBF (forest block in ag. landscape): yes; 3a (G1 or G2 plant community): FDc23a (79 acres); 3b (S1 or S2 plant community): FDc23a (79 acres), FDc24a (11 acres), FDc34a (128 acres); 3c (Special S3 plant community): FDc34b (61 acres); 3d (Natural origin pine stand): 186 acres; 3e (Old-growth forest): 83 acres of red pine.

Management Considerations

Overall management objectives for the entire HCVF:

Region HCVF Recommendations - Maintain or enhance the conifer swamp communities for the rare plant(verify the NPC); minimize changes in hydrologic regime. - Maintain current mix of cover types and age classes across HCVF. - Actively manage rare plant communities to maintain, enhance, and increase where necessary. - Maintain intact nature of the forest block. - Manage to maintain or promote older growth stages.

Management direction from the following sources was considered in developing the above recommendations:

Are the HCVs within this HCVF likely to benefit from coordination with adjacent landowner(s)?

Yes

This HCVF was flagged by the Regional HCVF Team as warranting cross-ownership coordination efforts. The specific HCVs likely to benefit from such coordination with adjacent landowners are identified below.

HCV 1b, 2b, 3a, 3b, 3c, 3d. Rare species and NPCs likely extend onto adjacent private, county managed and industry lands.

General Comments

Management needs to be coordinated especially for the rare NPCs. The largest known extent of FDc23a and FDc24a occurs in this area.

Reference to rare plants and animals, Minnesota Biological Survey Sites of Biological Significance and mapped native plant communities are records maintained in the Minnesota DNR's Natural Heritage Information System (NHIS). A date of information is associated with each record. The NHIS is continually updated as new information becomes available. The lack of data listed for any geographic area should not be construed to mean that no significant features are present.

... Report End ...