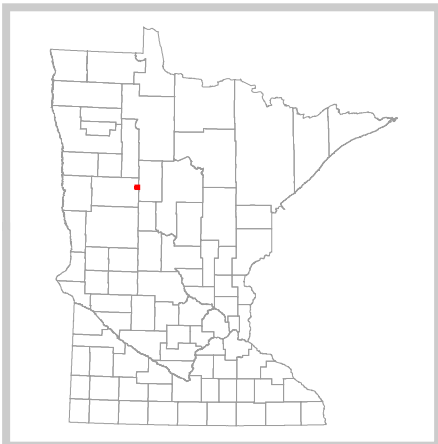
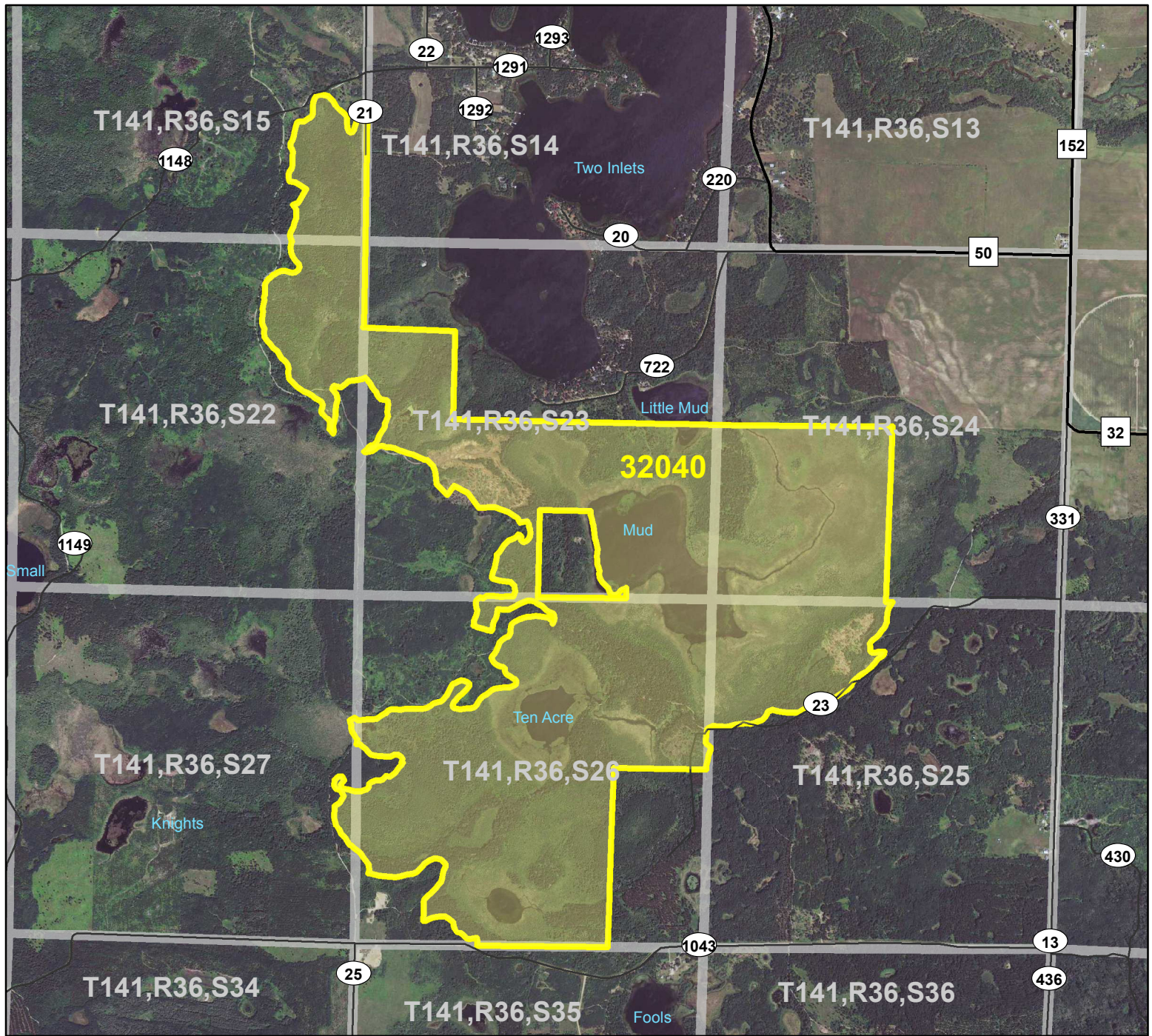


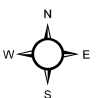
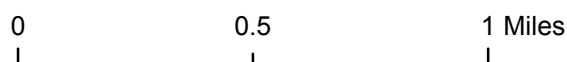
# HCVF Site 32040

## Two Inlets Lake South, Becker County



**Legend**

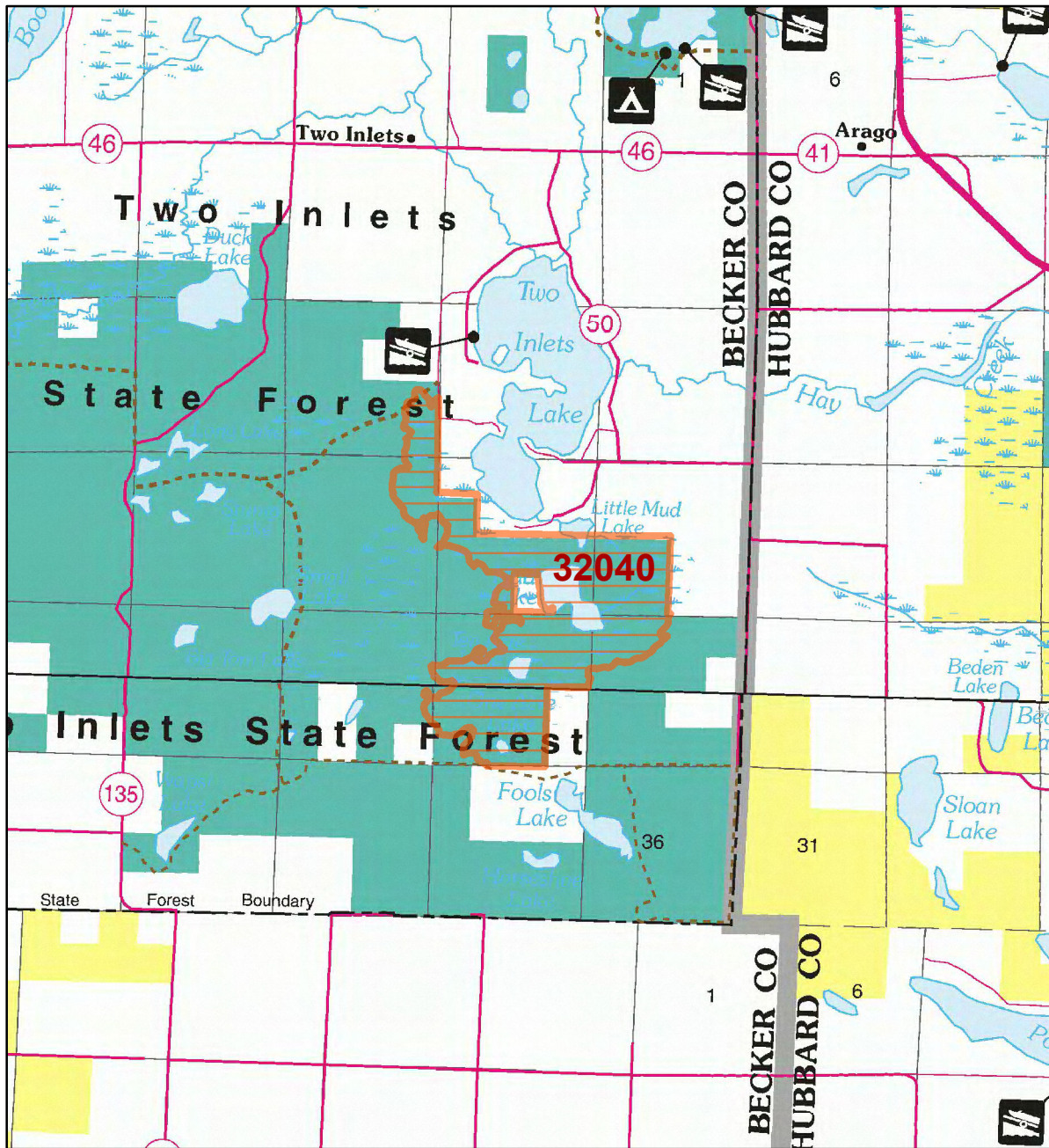
- County Highways
- Municipal, Township or Other Roads
- HCVF Site
- PLS Sections





# HCVF Site 32040

## Two Inlets Lake South, Becker County



### LEGEND

- HCVF Site
- MAP EXPLANATION**
- LAND OWNERSHIP**
  - County Land
  - Recreation Area under 40 acres
  - State Forest Land
  - State Park and Recreation Land
  - State Wildlife Management Area Land
    - W.M.A.'s under 40 acres
  - State Scientific & Natural Area Land
    - S.N.A.'s under 40 acres
  - National Waterfowl Production Area
    - N.W.P.A.'s under 40 acres
  - National Forest, Park, Wildlife Refuge & Recreation Land
  - Bureau of Indian Affairs Land
- BOUNDARIES**
  - County Unit Boundary
  - State Unit Boundary
  - National Unit Boundary
- TRAILS AND FOREST ROADS**
  - State Trail
  - State Forest Road
- DESIGNATED WATERWAYS**
  - State Trout Stream
  - State Canoe and Boating Route
  - State Wild, Scenic & Recreational River (also designated Canoe & Boating Route)
  - National Wild, Scenic & Recreational River (also designated Canoe & Boating Route)
- FACILITIES**
  - D.N.R. Office
  - Travel Information Center
  - Rest Area (with facilities)
  - Rest Area (limited facilities)
  - Campground
  - Watercraft Camping
  - Equestrian Camping
  - Water Access
  - Carry-in Access
  - Dam (on designated canoe route)
  - Fishing Pier
  - Overlook
  - Parking
  - Historic Site
  - Geologic Feature
  - Fish Hatchery
  - Forestry Nursery
  - National Great River Road
  - State Great River Road

NOTE: Some of the features defined in this map explanation may not occur on the map.

The PRIM series was developed using funds provided through the Legislative Commission on Minnesota Resources (LCMR).

Base information was compiled from 1:100,000 series U.S. Geologic Survey planimetric maps.

Facility and ownership information was compiled from the following sources: Minnesota Department of Natural Resources, Minnesota Department of Transportation, State Planning Agency, Minnesota Historical Society and the respective counties.



0 1.75 3.5 Miles

Land ownership categories on this map are in some cases outdated. HCVF sites are on DNR-managed land only; DNR HCVF sites have not been identified on other ownerships.



# HCVF Informational Report

Report Run: September 3, 2013

## General Information

**HCVF #: 32040**

**HCVF Name:** Two Inlets Lake South

**Acres of HCVF site:** 1054.64

**County:** Becker

**Data edited by:** Becky Marty, Erik Thorson

**Role:** NW Reg HCVF Team EWR and Wildlife Representatives

**Date edited on:** 2013-08-22

**Corresponding Land Administrator(s):** Forestry

**Management Unit Name(s) (if applicable):** Two Inlets State Forest

## HCVF Summary

Diverse array of interconnected wetlands and lakes with patchwork of intact upland forests on fairly rugged terrain. Tamarack swamps and rare rich fen with watertrack are present, as well as spruce, cedar and ash swamps, and spring fens.

### **HCVs known to be present that factored into HCVF designation.**

*FSC expects DNR to maintain HCVs within designated HCVFs. Because HCVF boundaries are not the same as the larger, multi-ownership MBS Sites, this list will differ from the values identified during the MBS Survey.*

EASTERN BROADLEAF FOREST PROVINCE HCVs: 2a - EBF (Intact forest block): 1,055 acres; 2d - EBF (forest block with vernal pools); yes; 3b (S1 or S2 plant community): FDc24a (62 acres), FDc34a (27 acres); 3c (Special S3 plant community): FDn33a1 (45 acres), FPn63b (48 acres), FPn63c; 3d (Natural origin pine stand): 81 aced of red and jack pine.

## Management Considerations

### **Overall management objectives for the entire HCVF:**

Region HCVF Recommendations - Maintain current mix of cover types across HCVF; look for opportunities to promote older growth stages. - Actively manage rare plant communities to maintain, enhance, and increase where necessary; verify subtypes. - Maintain intact nature of forest block. - Verify FPn63c (S3). - Verify natural origin pine. - Consult latest BMP recommendations for vernal pools.

**Management direction from the following sources was considered in developing the above recommendations:**

**Are the HCVs within this HCVF likely to benefit from coordination with adjacent landowner(s)?**

**\_Yes\_**

*This HCVF was flagged by the Regional HCVF Team as warranting cross-ownership coordination efforts. The specific HCVs likely to benefit from such coordination with adjacent landowners are identified below.*

HCV 2a, 2d, 3b, 3c, 3d. Rare NPCs likely extend onto adjacent private and industry lands.

## General Comments

Managment needs to be coordinated especially for the rare NPCs and to maintain the forest block. Hydrology should be evaluated to determine if management could be coordinated.

*Reference to rare plants and animals, Minnesota Biological Survey Sites of Biological Significance and mapped native plant communities are records maintained in the Minnesota DNR's Natural Heritage Information System (NHIS). A date of information is associated with each record. The NHIS is continually updated as new information becomes available. The lack of data listed for any geographic area should not be construed to mean that no significant features are present.*

*... Report End ...*