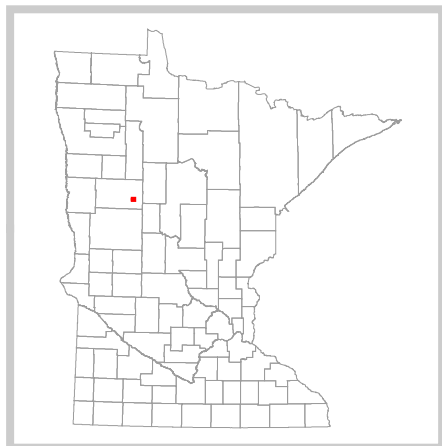
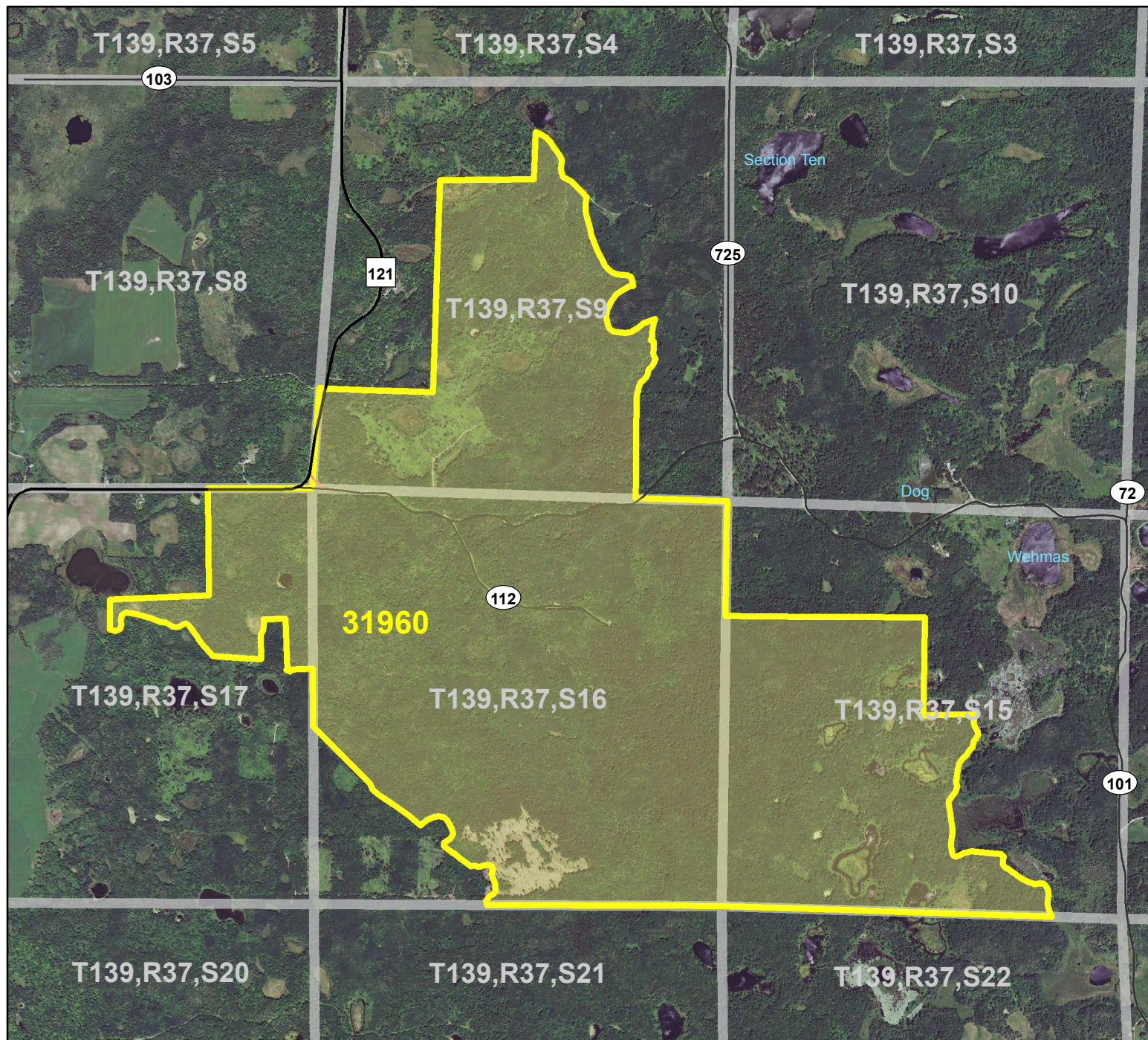


HCVF Site 31960

Smoky Hills 4, Becker County



Legend

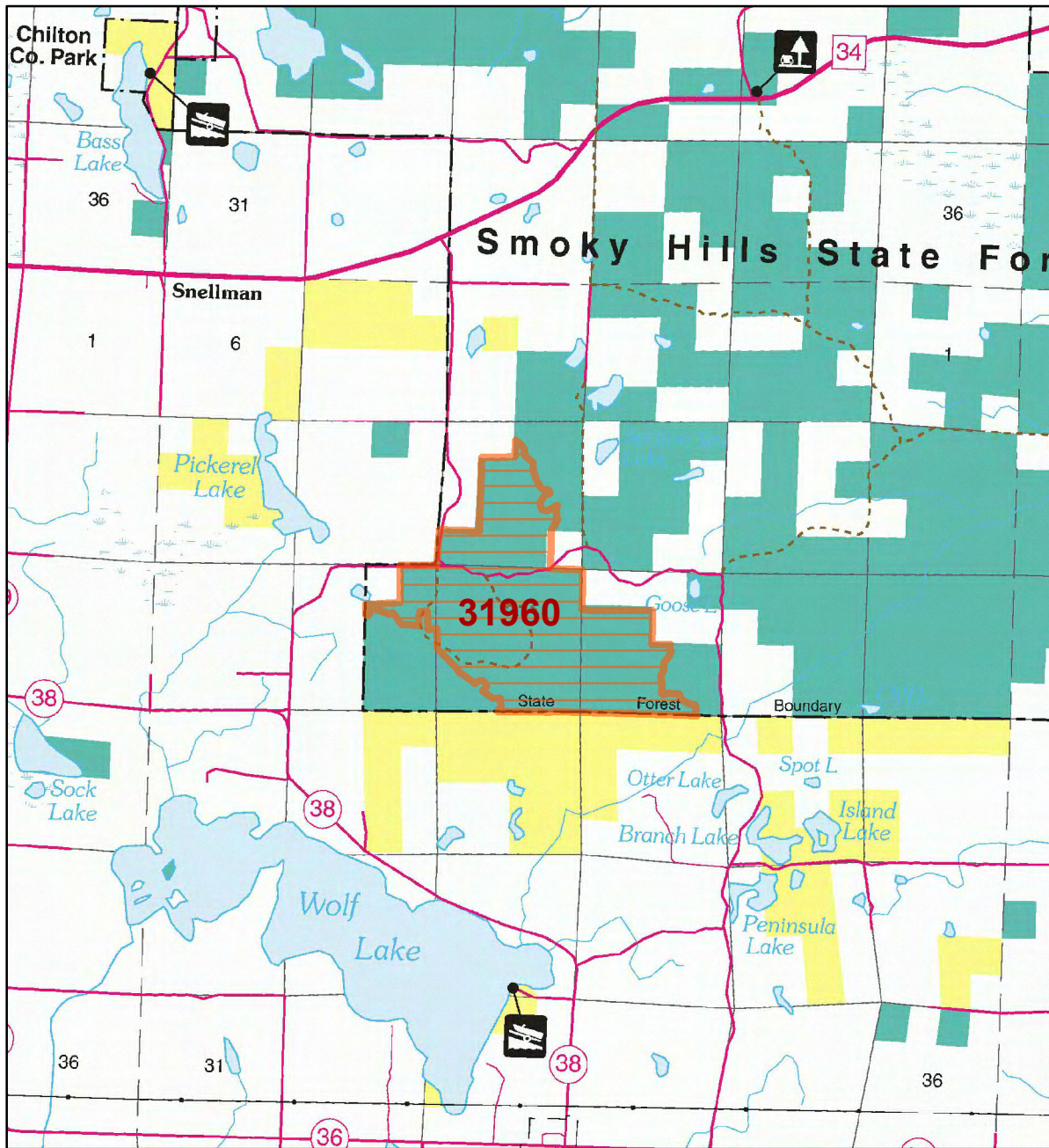
- County Highways
- Municipal, Township or Other Roads
- Ramps
- HCVF Site
- PLS Sections

0 0.5 1 Miles



HCVF Site 31960

Smoky Hills 4, Becker County



LEGEND

HCVF Site

MAP EXPLANATION

LAND OWNERSHIP

- County Land
- State Forest Land
- State Park and Recreation Land
- State Wildlife Management Area Land
- W.M.A.'s under 40 acres
- State Scientific & Natural Area Land
- S.N.A.'s under 40 acres
- National Waterfowl Production Area
- N.W.P.A.'s under 40 acres
- National Forest, Park, Wildlife Refuge & Recreation Land
- Bureau of Indian Affairs Land

BOUNDARIES

- County Unit Boundary
- State Unit Boundary
- National Unit Boundary

TRAILS AND FOREST ROADS

- State Trail
- State Forest Road

DESIGNATED WATERWAYS

- State Trout Stream
- State Canoe and Boating Route
- State Wild, Scenic & Recreational River (also designated Canoe & Boating Route)
- National Wild, Scenic & Recreational River (also designated Canoe & Boating Route)

FACILITIES

- D.N.R. Office
- Travel Information Center
- Rest Area (with facilities)
- Rest Area (limited facilities)
- Campground
- Watercraft Camping
- Equestrian Camping
- Water Access
- Carry-in Access
- Dam (on designated canoe route)
- Fishing Pier
- Overlook
- Parking
- Historic Site
- Geologic Feature
- Fish Hatchery
- Forestry Nursery
- National Great River Road
- State Great River Road

NOTE: Some of the features defined in this map explanation may not occur on the map.

The PRIM series was developed using funds provided through the Legislative Commission on Minnesota Resources (LCMR).

Base information was compiled from 1:100,000 series U.S. Geologic Survey planimetric maps.

Facility and ownership information was compiled from the following sources: Minnesota Department of Natural Resources, Minnesota Department of Transportation, State Planning Agency, Minnesota Historical Society and the respective counties.



0 2 4 Miles

Land ownership categories on this map are in some cases outdated. HCVF sites are on DNR-managed land only; DNR HCVF sites have not been identified on other ownerships.



HCVF Informational Report

Report Run: September 3, 2013

General Information

HCVF #: 31960

HCVF Name: Smoky Hills 4

Acres of HCVF site: 1201.19

County: Becker

Data edited by: Becky Marty, Erik Thorson

Role: NW Reg HCVF Team EWR and Wildlife Representatives

Date edited on: 2013-08-22

Corresponding Land Administrator(s): Forestry

Management Unit Name(s) (if applicable): Smoky Hills State Forest

HCVF Summary

Hardwood conifer forest (NH and WP+RP); least fragmented area in Smoky Hills; 1,125 acre contiguous block of mature/OG forest in state ownership - 143 acres NH, and 64 acres RP designated as old growth.

HCVs known to be present that factored into HCVF designation.

FSC expects DNR to maintain HCVs within designated HCVFs. Because HCVF boundaries are not the same as the larger, multi-ownership MBS Sites, this list will differ from the values identified during the MBS Survey.

LAURENTIAN MIXED FOREST PROVINCE HCVs: 1e (Rare species concentration): birds; 1g (Examples of Outstanding Key Habitats): Forest-Upland Coniferous (Red-white pine); 2a - LMF (Large forest/peatland block): 1,201 acres, in and around the site; 2bi - LMF (late successional forest block): yes; 3b (S1 or S2 plant community): FDc34a (353 acres); 3c (Special S3 plant community): FDc34b, APn91b; 3d (Natural origin pine stand): red pine (206 acres); 3e (Old-growth forest): northern hardwoods (143 acres), Norway pine (64 acres).

Management Considerations

Overall management objectives for the entire HCVF:

Region HCVF Recommendations - Maintain the diverse ground layer. - Maintain continuous canopy and develop uneven-aged stands. - Actively manage and maintain the rare plant communities and key habitat. - Manage to maintain or promote older growth stages. - Verify the natural origin pine. - Verify the amount of old growth SMZ and OFMC.

Management direction from the following sources was considered in developing the above recommendations:

Are the HCVs within this HCVF likely to benefit from coordination with adjacent landowner(s)?

Yes

This HCVF was flagged by the Regional HCVF Team as warranting cross-ownership coordination efforts. The specific HCVs likely to benefit from such coordination with adjacent landowners are identified below.

HCV 1e, 1g, 2a, 2bi, 3b, 3c, 3d, 3e. Multiple SGCN and rare plant communities extend onto adjacent Becker county and private lands.

General Comments

Determine if it is appropriate to apply HCVs from EBF; EBF HCVs that apply include 2bii (forest block in ag landscape), and 2d (forest block with vernal pools).

Reference to rare plants and animals, Minnesota Biological Survey Sites of Biological Significance and mapped native plant communities are records maintained in the Minnesota DNR's Natural Heritage Information System (NHIS). A date of information is associated with each record. The NHIS is continually updated as new information becomes available. The lack of data listed for any geographic area should not be construed to mean that no significant features are present.

... Report End ...