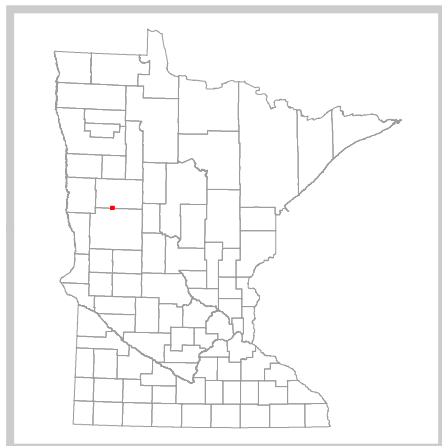
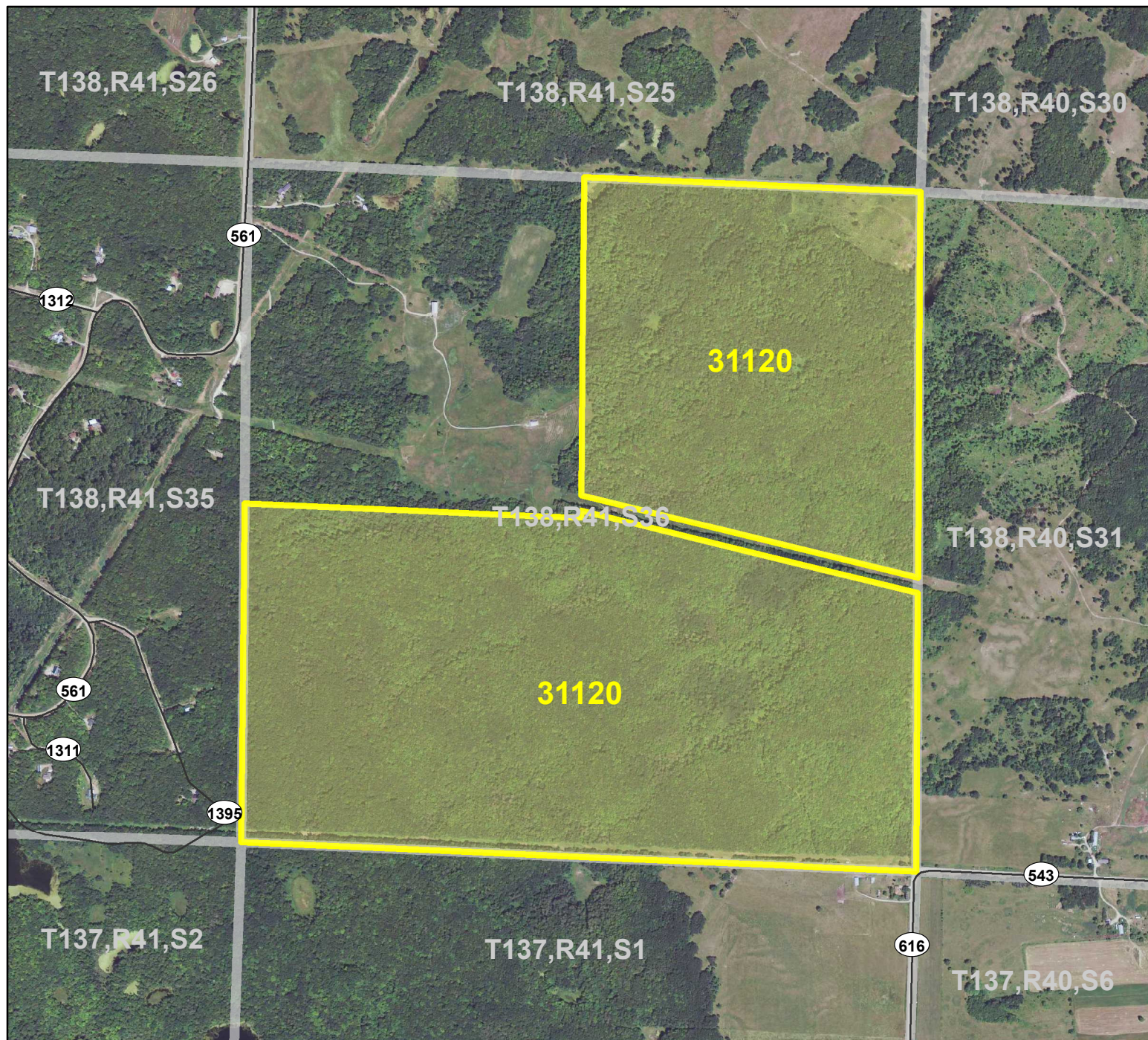


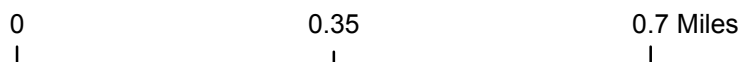
HCVF Site 31120

Lakeview 36, Becker County



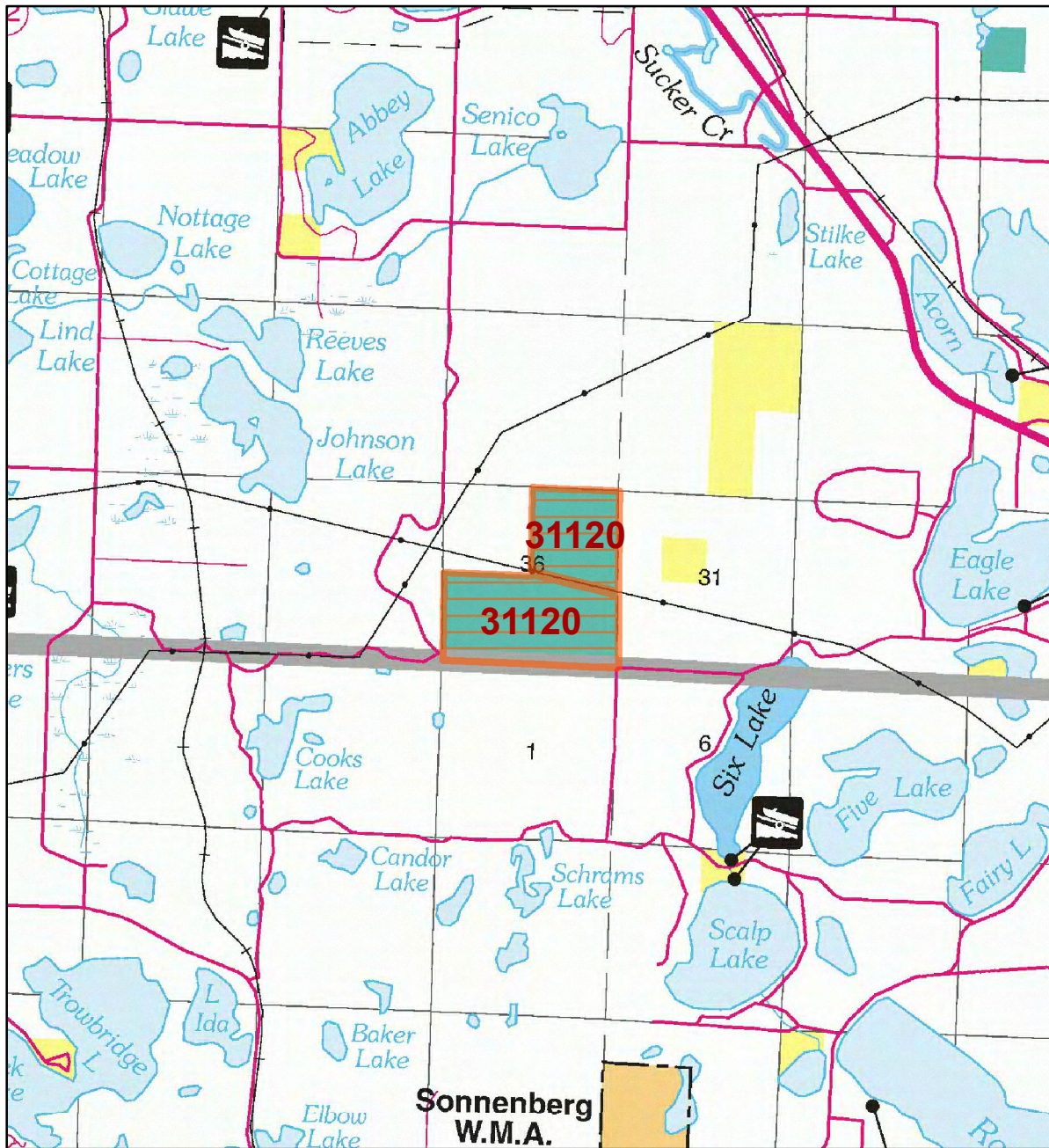
Legend

- Municipal, Township or Other Roads
- HCVF Site
- PLS Sections



HCVF Site 31120

Lakeview 36, Becker County



LEGEND

HCVF Site

MAP EXPLANATION

LAND OWNERSHIP

- County Land
- Recreation Area under 40 acres
- State Forest Land
- State Park and Recreation Land
- State Wildlife Management Area Land
- W.M.A.'s under 40 acres
- State Scientific & Natural Area Land
- S.N.A.'s under 40 acres
- National Waterfowl Production Area
- N.W.P.A.'s under 40 acres
- National Forest, Park, Wildlife Refuge & Recreation Land
- Bureau of Indian Affairs Land

BOUNDARIES

- County Unit Boundary
- State Unit Boundary
- National Unit Boundary

TRAILS AND FOREST ROADS

- State Trail
- State Forest Road

DESIGNATED WATERWAYS

- State Trout Stream
- State Canoe and Boating Route
- State Wild, Scenic & Recreational River (also designated Canoe & Boating Route)
- National Wild, Scenic & Recreational River (also designated Canoe & Boating Route)

FACILITIES

- D.N.R. Office
- Travel Information Center
- Rest Area (with facilities)
- Rest Area (limited facilities)
- Campground
- Watercraft Camping
- Equestrian Camping
- Water Access
- Carry-in Access
- Dam (on designated canoe route)
- Fishing Pier
- Overlook
- Parking
- Historic Site
- Geologic Feature
- Fish Hatchery
- Forestry Nursery
- National Great River Road
- State Great River Road

NOTE: Some of the features defined in this map explanation may not occur on the map.

The PRIM series was developed using funds provided through the Legislative Commission on Minnesota Resources (LCMR).

Base information was compiled from 1:100,000 series U.S. Geologic Survey planimetric maps.

Facility and ownership information was compiled from the following sources: Minnesota Department of Natural Resources, Minnesota Department of Transportation, State Planning Agency, Minnesota Historical Society and the respective counties.



0 1.5 3 Miles

Land ownership categories on this map are in some cases outdated. HCVF sites are on DNR-managed land only; DNR CVF sites have not been identified on other ownerships.



HCVF Informational Report

Report Run: September 3, 2013

General Information

HCVF #: 31120

HCVF Name: Lakeview 36

Acres of HCVF site: 478.58

County: Becker

Data edited by: Becky Marty, Erik Thorson

Role: NW Reg HCVF Team EWR and Wildlife Representatives

Date edited on: 2013-08-22

Corresponding Land Administrator(s): Forestry

Management Unit Name(s) (if applicable): Park Rapids Area Forestry

HCVF Summary

Central Mesic Hardwood Forest (Sugar Maple - Basswood - (Aspen) Forest) on rolling terrain. Southern Section 36 (in WMA) is best portion of site. Soil is loamy sand. This site along with private land in Otter Tail Site #112, which abuts the site to the south, was approved by CAC for SNA acquisition; these two sites represent an 1,800 acre unfragmented forest landscape. Terrain is strongly rolling and dominated by red oak, basswood, and sugar maple. This site is a classic, high quality, example of MHc37. Some basswood and oak are very large (60-70cm dbh). There are old logging roads/now ATV roads that run on the west side of the site and meet the power line that dissects the site in half. The north half of the site (north of the power line) appears younger and more disturbed with much more aspen and paper birch. A "B-ranked" population of a S1 plant (only population known from H or O sites in Section) is located near a couple of recent patch cuts just south of the power line in a low area. Relieves 3450 and 3846. Cerulean warblers and red-shouldered hawks, and Galaris spectabilis found adjacent to this forest.

HCVs known to be present that factored into HCVF designation.

FSC expects DNR to maintain HCVs within designated HCVFs. Because HCVF boundaries are not the same as the larger, multi-ownership MBS Sites, this list will differ from the values identified during the MBS Survey.

EASTERN BROADLEAF FOREST PROVINCE HCVs: 1b (S1 or S2 species): 1 plant; 1e (Rare species concentration): 8 birds; 1g (Examples of outstanding key habitats): forest-upland deciduous (hardwood); 2b - EBF (old forest): yes; 2c - EBF (forest block in ag landscape): 479 acres.

Management Considerations

Overall management objectives for the entire HCVF:

Region HCVF Recommendations - Maintain diverse ground layer. - Determine extent of the rare plants; actively maintain and manage the plant communities for the rare plants. - Minimize size and impact of management on continuous crown to maintain habitat for rare plants and the intact forest block. - Develop uneven-aged stands. - Manage to maintain or promote older growth stages; transition MHc37 to more mature growth stage.

Management direction from the following sources was considered in developing the above recommendations:

2012 Hardwood Hills SFRMP

Are the HCVs within this HCVF likely to benefit from coordination with adjacent landowner(s)?

Yes

This HCVF was flagged by the Regional HCVF Team as warranting cross-ownership coordination efforts. The specific HCVs likely to benefit from such coordination with adjacent landowners are identified below.

HCV 1e, 1g, 2b, 2c. Multiple SGCNs extend onto adjacent private lands.

General Comments

No information entered.

Reference to rare plants and animals, Minnesota Biological Survey Sites of Biological Significance and mapped native plant communities are records maintained in the Minnesota DNR's Natural Heritage Information System (NHIS). A date of information is associated with each record. The NHIS is continually updated as new information becomes available. The lack of data listed for any geographic area should not be construed to mean that no significant features are present.

... Report End ...