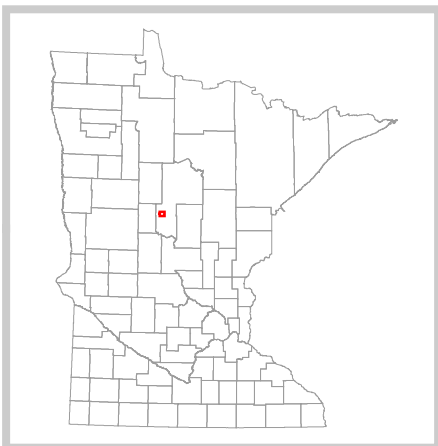
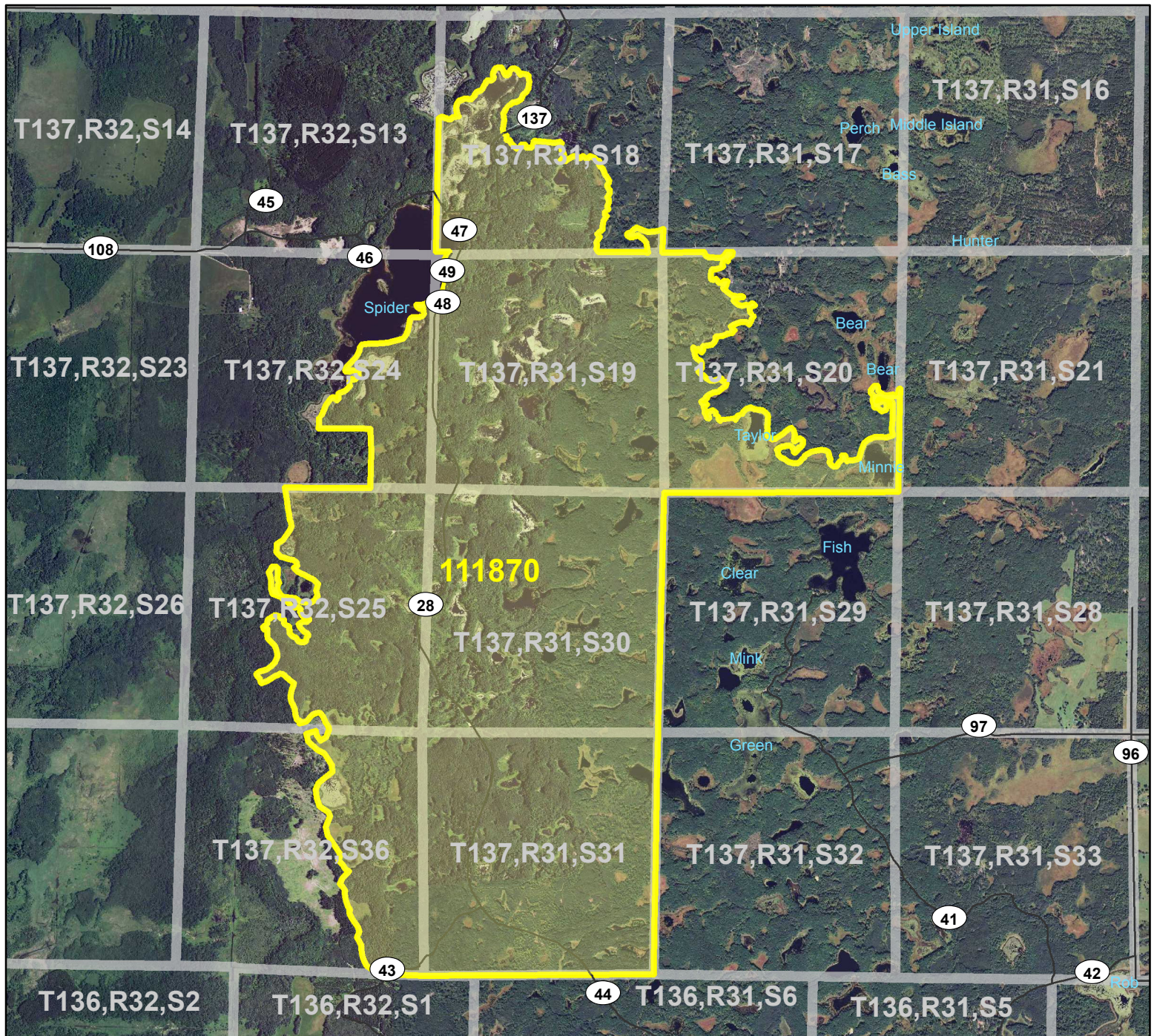


HCVF Site 111870

Bungo 29, Cass County

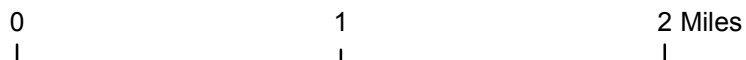


Legend

Municipal, Township or Other Roads

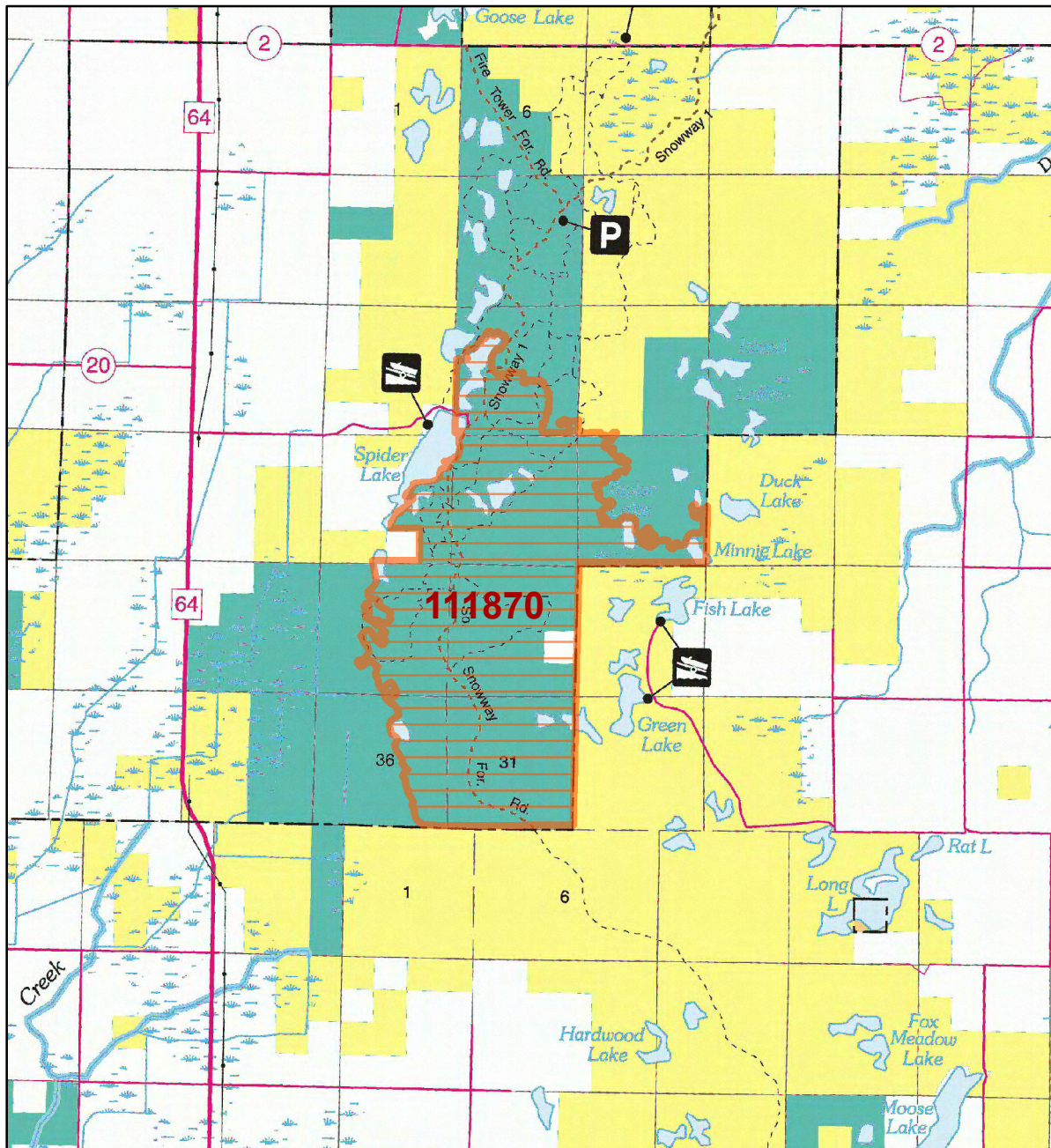
HCVF Site

PLS Sections



HCVF Site 111870

Bungo 29, Cass County



LEGEND

HCVF Site

MAP EXPLANATION

LAND OWNERSHIP

- County Land
- Recreation Area under 40 acres
- State Forest Land
- State Park and Recreation Land
- State Wildlife Management Area Land
- W.M.A.'s under 40 acres
- State Scientific & Natural Area Land
- S.N.A.'s under 40 acres
- National Waterfowl Production Area
- N.W.P.A.'s under 40 acres
- National Forest, Park, Wildlife Refuge & Recreation Land
- Bureau of Indian Affairs Land

BOUNDARIES

- County Unit Boundary
- State Unit Boundary
- National Unit Boundary

TRAILS AND FOREST ROADS

- State Trail
- State Forest Road

DESIGNATED WATERWAYS

- State Trout Stream
- State Canoe and Boating Route
- State Wild, Scenic & Recreational River (also designated Canoe & Boating Route)
- National Wild, Scenic & Recreational River (also designated Canoe & Boating Route)

FACILITIES

- D.N.R. Office
- Travel Information Center
- Rest Area (with facilities)
- Rest Area (limited facilities)
- Campground
- Watercraft Camping
- Equestrian Camping
- Water Access
- Carry-in Access
- Dam (on designated canoe route)
- Fishing Pier
- Overlook
- Parking
- Historic Site
- Geologic Feature
- Fish Hatchery
- Forestry Nursery
- National Great River Road
- State Great River Road

NOTE: Some of the features defined in this map explanation may not occur on the map.

The PRIM series was developed using funds provided through the Legislative Commission on Minnesota Resources (LCMR).

Base information was compiled from 1:100,000 series U.S. Geologic Survey planimetric maps.

Facility and ownership information was compiled from the following sources: Minnesota Department of Natural Resources, Minnesota Department of Transportation, State Planning Agency, Minnesota Historical Society and the respective counties.



0 2.25 4.5 Miles

Land ownership categories on this map are in some cases outdated. HCVF sites are on DNR-managed land only; DNR HCVF sites have not been identified on other ownerships.



HCVF Informational Report

Report Run: September 3, 2013

General Information

HCVF #: 111870

HCVF Name: Bungo 29

Acres of HCVF site: 3093.79

County: Cass

Data edited by: Becky Marty, Erik Thorson

Role: NW Reg HCVF Team EWR and Wildlife Representatives

Date edited on: 2013-08-22

Corresponding Land Administrator(s): Forestry

Management Unit Name(s) (if applicable): Park Rapids Area Forestry

HCVF Summary

Large block of oak-aspen-red maple forest; hilly terrain with many small lakes and wetlands. More than 2,900 acres of contiguous forest interrupted by lakes and wetlands; red-shouldered hawk habitat; large area of contiguous, mature dry-mesic hardwood forest. Much of aspen is young but lots of land typed as mature oak. Fairly dissected; may add moderate sites.

HCVs known to be present that factored into HCVF designation.

FSC expects DNR to maintain HCVs within designated HCVFs. Because HCVF boundaries are not the same as the larger, multi-ownership MBS Sites, this list will differ from the values identified during the MBS Survey.

EASTERN BROADLEAF FOREST PROVINCE HCVs: 1g (Examples of outstanding key habitats): wetland-nonforest, forest-upland coniferous (red-white pine); 2a EBF (Intact forest block): yes, 3,094 acres; 2d EBF (forest blocks with vernal pools): yes; 3b (S1 or S2 plant community): FDc34; 3c (Special S3 plant community): APn91; 3d (Natural origin pine stand).

Management Considerations

Overall management objectives for the entire HCVF:

Region HCVF Recommendations - Minimize size and impact on crown closure from any harvest activities; maintain at least 50% crown closure. - Identify location of regionally rare species documented on HCV perimeters and follow applicable recommended habitat guidelines. - Maintain diverse ground cover. - Maintain current mix of cover types and age classes across the HCVF; look for opportunities to promote older growth stages. - Verify rare NPC subtypes. - Minimize development of shrubs in understory. - Consult latest BMP recommendations for vernal pools.

Management direction from the following sources was considered in developing the above

recommendations:

2008 Chippewa Plains-Pine Moraines and Outwash Plains SFRMP. MFRC riparian scientific report.

Are the HCVs within this HCVF likely to benefit from coordination with adjacent landowner(s)?

Yes

This HCVF was flagged by the Regional HCVF Team as warranting cross-ownership coordination efforts. The specific HCVs likely to benefit from such coordination with adjacent landowners are identified below.

HCV 1g, 2a, 2d, 3b, 3c. Likely rare NPCs and confirmed rare species extend onto adjacent Cass county and private lands.

General Comments

Site includes a high density of OHV trails (Spider Lake OHV system).

Reference to rare plants and animals, Minnesota Biological Survey Sites of Biological Significance and mapped native plant communities are records maintained in the Minnesota DNR's Natural Heritage Information System (NHIS). A date of information is associated with each record. The NHIS is continually updated as new information becomes available. The lack of data listed for any geographic area should not be construed to mean that no significant features are present.

... Report End ...