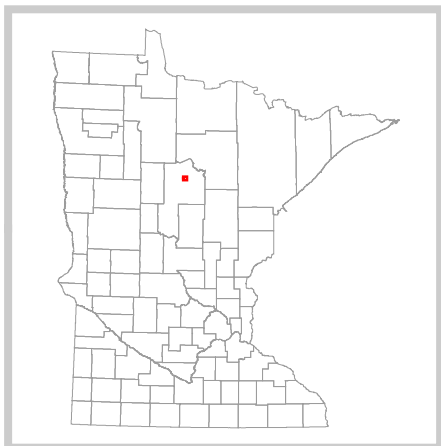
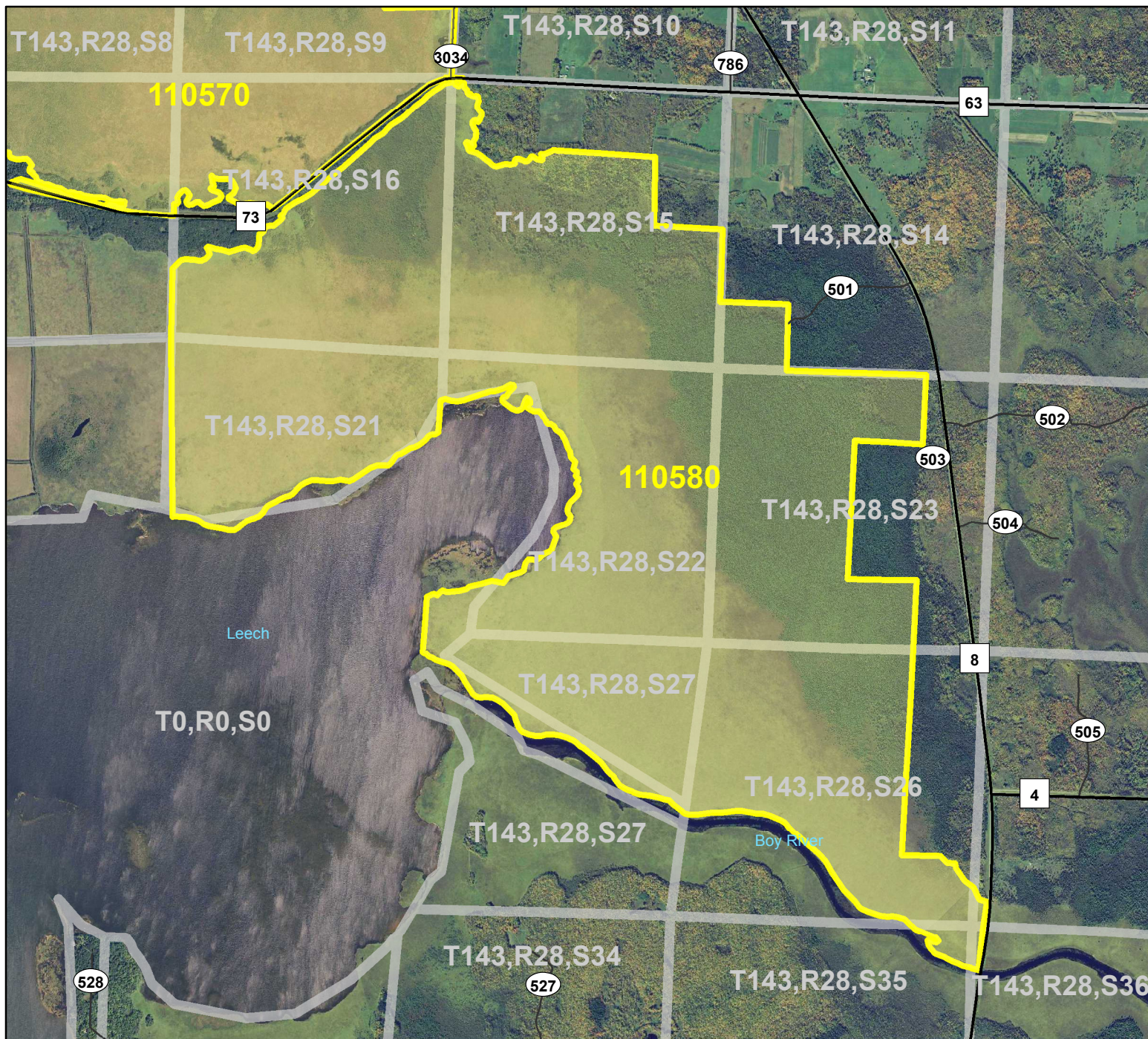


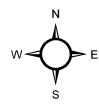
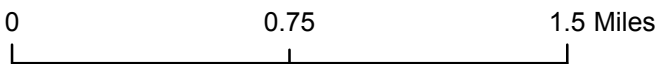
HCVF Site 110580

Gould 22, Cass County



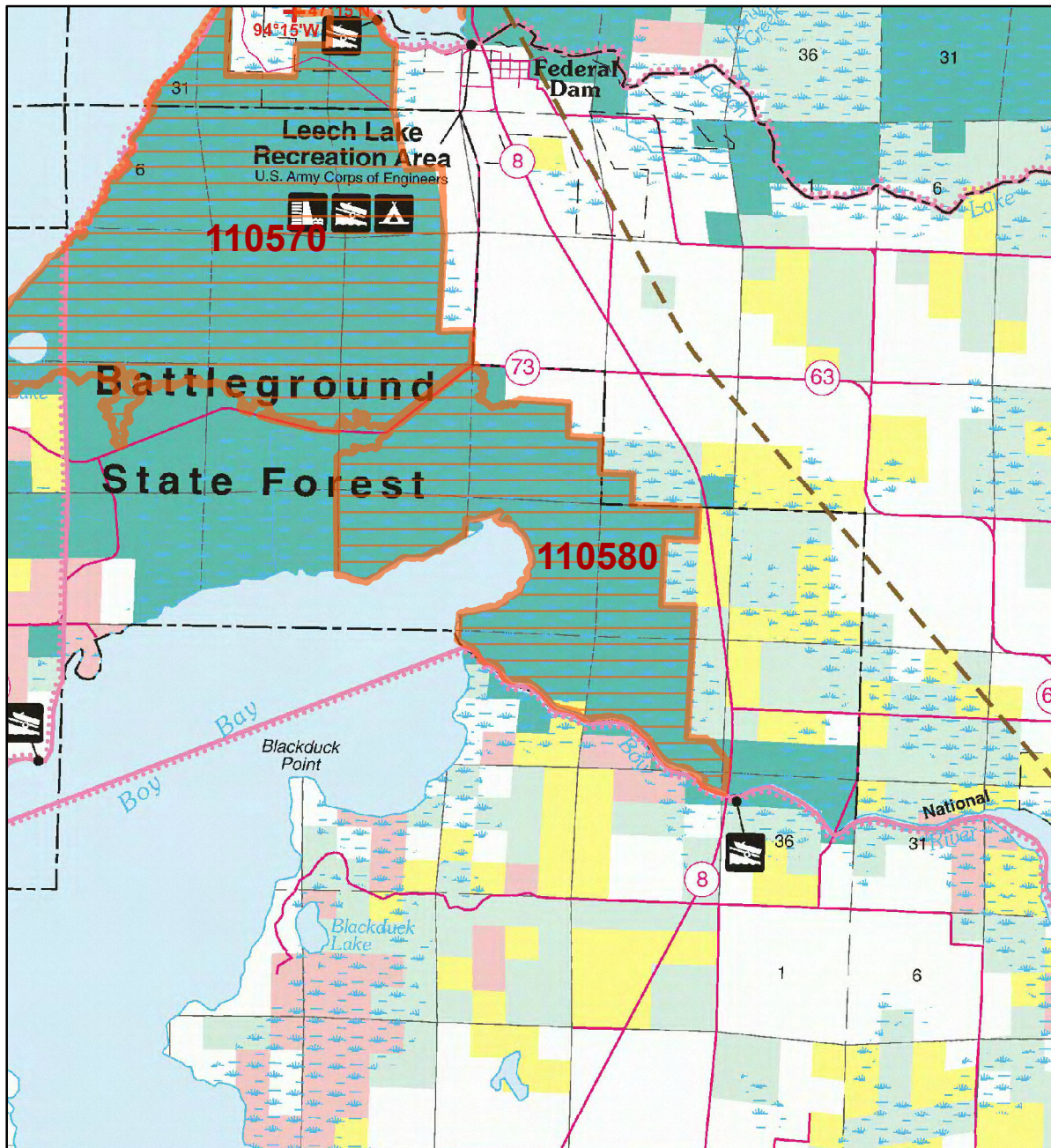
Legend

- County Highways
- Municipal, Township or Other Roads
- HCVF Site
- PLS Sections



HCVF Site 110580

Gould 22, Cass County



LEGEND

HCVF Site

MAP EXPLANATION

LAND OWNERSHIP

- County Land
- Recreation Area under 40 acres
- State Forest Land
- State Park and Recreation Land
- State Wildlife Management Area Land
- W.M.A.'s under 40 acres
- State Scientific & Natural Area Land
- S.N.A.'s under 40 acres
- National Waterfowl Production Area
- N.W.P.A.'s under 40 acres
- National Forest, Park, Wildlife Refuge & Recreation Land
- Bureau of Indian Affairs Land

BOUNDARIES

- County Unit Boundary
- State Unit Boundary
- National Unit Boundary

TRAILS AND FOREST ROADS

- State Trail
- State Forest Road

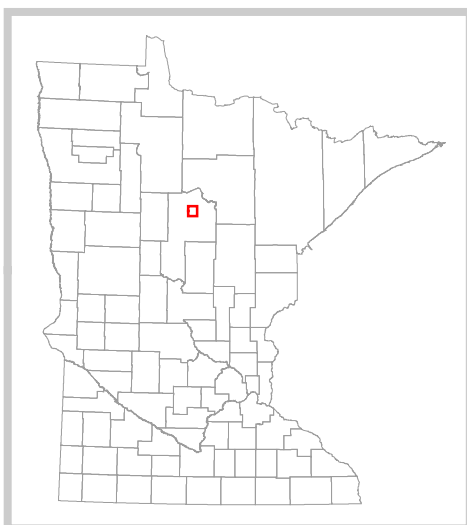
DESIGNATED WATERWAYS

- State Trout Stream
- State Canoe and Boating Route
- State Wild, Scenic & Recreational River (also designated Canoe & Boating Route)
- National Wild, Scenic & Recreational River (also designated Canoe & Boating Route)

FACILITIES

- D.N.R. Office
- Travel Information Center
- Rest Area (with facilities)
- Rest Area (limited facilities)
- Campground
- Watercraft Camping
- Equestrian Camping
- Water Access
- Carry-in Access
- Dam (on designated canoe route)
- Fishing Pier
- Overlook
- Parking
- Historic Site
- Geologic Feature
- Fish Hatchery
- Forestry Nursery
- National Great River Road
- State Great River Road

NOTE: Some of the features defined in this map explanation may not occur on the map.



The PRIM series was developed using funds provided through the Legislative Commission on Minnesota Resources (LCMR).

Base information was compiled from 1:100,000 series U.S. Geologic Survey planimetric maps.

Facility and ownership information was compiled from the following sources: Minnesota Department of Natural Resources, Minnesota Department of Transportation, State Planning Agency, Minnesota Historical Society and the respective counties.



0 2 4 Miles

Land ownership categories on this map are in some cases outdated. HCVF sites are on DNR-managed land only; DNR HCVF sites have not been identified on other ownerships.



HCVF Informational Report

Report Run: September 3, 2013

General Information

HCVF #: 110580

HCVF Name: Gould 22

Acres of HCVF site: 2709.81

County: Cass

Data edited by: Becky Marty, Erik Thorson

Role: NW Reg HCVF Team EWR and Wildlife Representatives

Date edited on: 2013-08-22

Corresponding Land Administrator(s): Forestry

Management Unit Name(s) (if applicable): Battleground State Forest

HCVF Summary

Approximately 2,300 acres of contiguous sedge meadow, rich tamarack swamp, and cedar swamp on state lands. Several blocks of roadless areas in the two sites.

HCVs known to be present that factored into HCVF designation.

FSC expects DNR to maintain HCVs within designated HCVFs. Because HCVF boundaries are not the same as the larger, multi-ownership MBS Sites, this list will differ from the values identified during the MBS Survey.

LAURENTIAN MIXED FOREST PROVINCE HCVs: 1b (S1 or S2 species): 1 bird; 1e (Rare species concentration): 9 birds; 1g (Examples of outstanding key habitats): wetland-nonforest; 2a - LMF (large forest/peatland block): 2,710 acres peatland; 2bii - LMF (late successional forest blocks with rare species): yes; 3c (Special S3 plant community): FPN63, MHn47 (3 acres); 3g (Potential roadless area).

Management Considerations

Overall management objectives for the entire HCVF:

Region HCVF Recommendations - Manage to maintain or promote older growth stages; minimize size and impact on continuous crown to maintain the patch(s). - Maintain openlands SMA in western portion of site. - Actively manage for rare plant communities and open landscape characteristics to maintain, enhance and increase rare birds and conduct SGCN analysis for habitat needs. - Maintain roadless state.

Management direction from the following sources was considered in developing the above recommendations:

2008 Chippewa Plains-Pine Moraines and Outwash Plains SFRMP.

Are the HCVs within this HCVF likely to benefit from coordination with adjacent landowner(s)?

Yes

This HCVF was flagged by the Regional HCVF Team as warranting cross-ownership coordination efforts. The specific HCVs likely to benefit from such coordination with adjacent landowners are identified below.

HCV 1b, 1e, 1g, 2a, 2bii, 3c, 3g. Multiple rare species and SGCNs extend onto adjacent private and federal lands.

General Comments

There are limited opportunities for harvest or other active management; harvest primarily confined to the eastern edge.

Reference to rare plants and animals, Minnesota Biological Survey Sites of Biological Significance and mapped native plant communities are records maintained in the Minnesota DNR's Natural Heritage Information System (NHIS). A date of information is associated with each record. The NHIS is continually updated as new information becomes available. The lack of data listed for any geographic area should not be construed to mean that no significant features are present.

... Report End ...