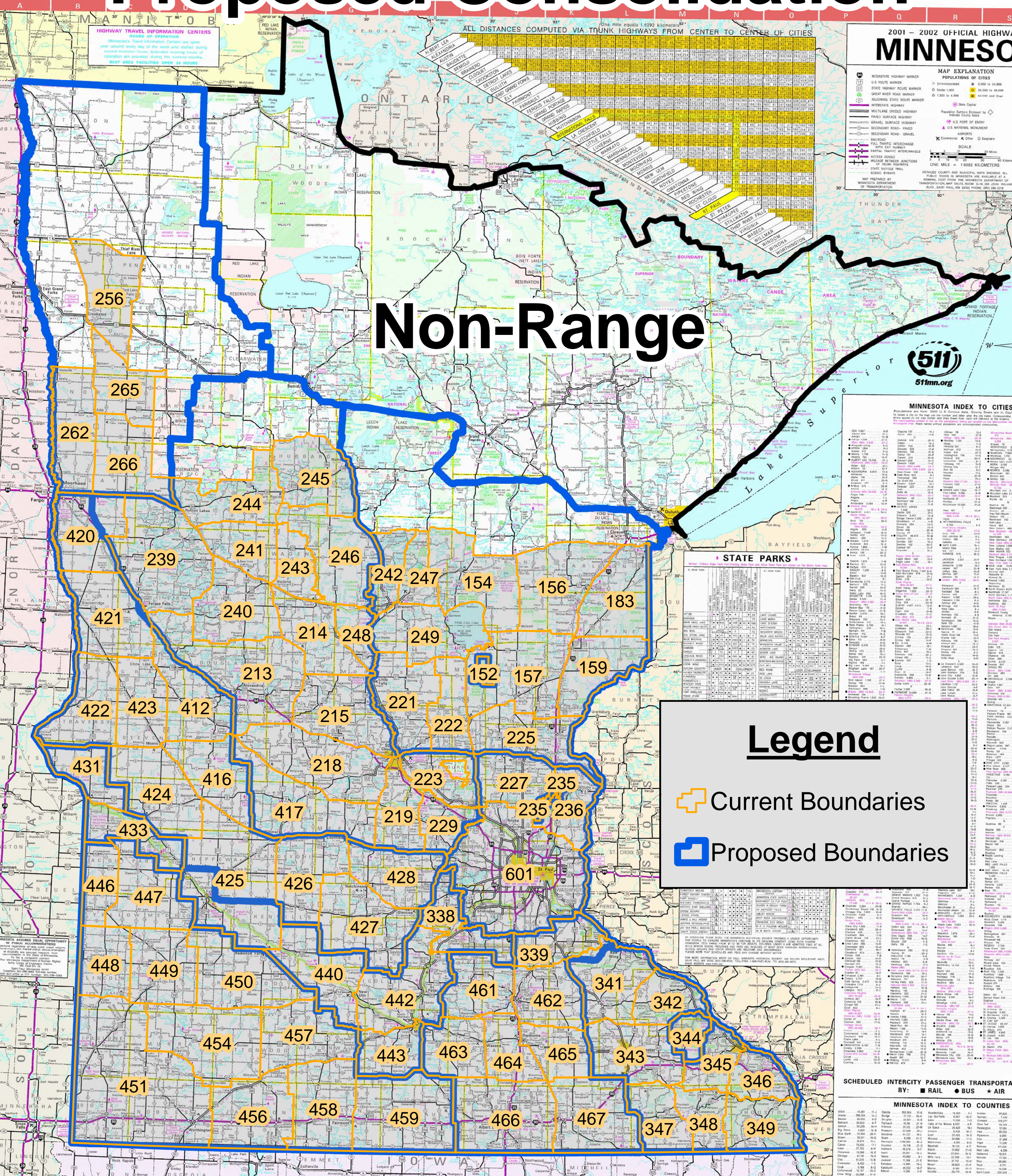


Wild Turkey Permit Areas Proposed Consolidation



Non-Range

Legend

- Current Boundaries
- Proposed Boundaries

2001 - 2002 OFFICIAL HIGHWAY MAP OF MINNESOTA

POPULATION OF CITIES

- Unincorporated
- Under 1,000
- 1,000 to 4,999
- 5,000 to 24,999
- 25,000 to 49,999
- 50,000 and Over

POPULATION SOURCE: U.S. CENSUS BUREAU

MAP EXPLANATION

- INTERSTATE HIGHWAY MARKER
- U.S. ROUTE MARKER
- STATE HIGHWAY ROUTE MARKER
- GRATEL SURFACE ROAD MARKER
- ADDITIONAL STATE ROUTE MARKER
- INTERSTATE HIGHWAY
- MULTILANE DIVIDED HIGHWAY
- PAVED SURFACE HIGHWAY
- GRAVEL SURFACE HIGHWAY
- SECONDARY ROAD - PAVED
- SECONDARY ROAD - GRAVEL
- RAILROAD
- FULL TRAFFIC INTERCHANGE
- PARTIAL TRAFFIC INTERCHANGE
- ACCESS GRANTED
- MEASURE BETWEEN JUNCTIONS OF TRUNK HIGHWAYS
- SCenic BYWAY
- SCenic BRIDGE

SCALE: 1:100,000

ONE MILE = 1.6093 KILOMETERS

STATE PARKS

Park Name	Location	Area (Acres)	Year Established
Adirondack Park	St. Louis	1,000	1909
... (many more rows)

MINNESOTA INDEX TO CITIES

City	County	Population
Ada	Wadena	1,000
... (many more rows)

SCHEDULED INTERCITY PASSENGER TRANSPORTATION

BY: RAIL • BUS • AIR

MINNESOTA INDEX TO COUNTIES

County	Area (Sq. Miles)	Population
Adair	1,000	1,000
... (many more rows)