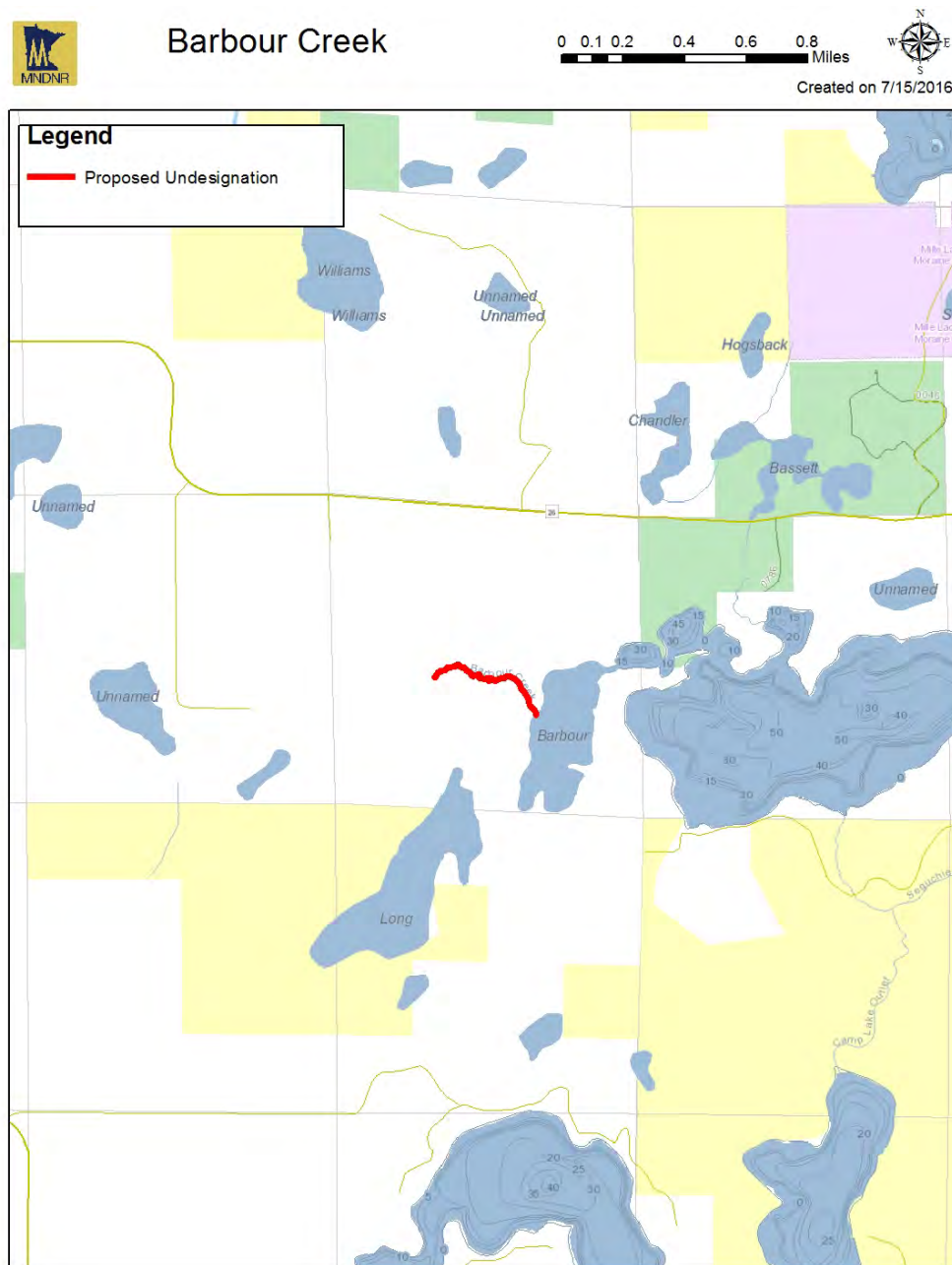




# Trout Stream Designation Removals

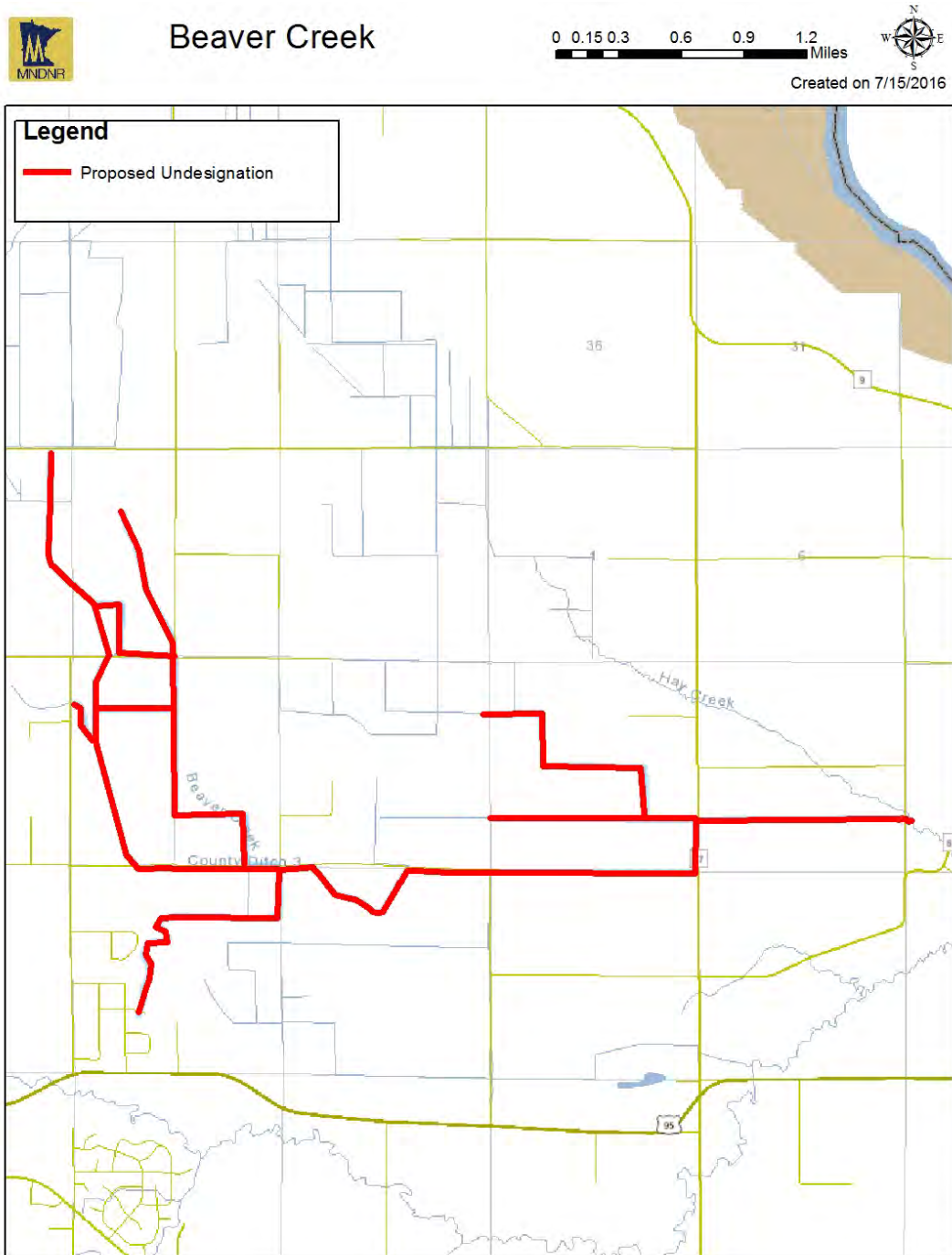
## Barbour Creek

This stream does not have a documented history of trout management. A 1975 survey found no trout living in the stream. MPCA is considering classifying Barbour Creek as a warmwater stream.



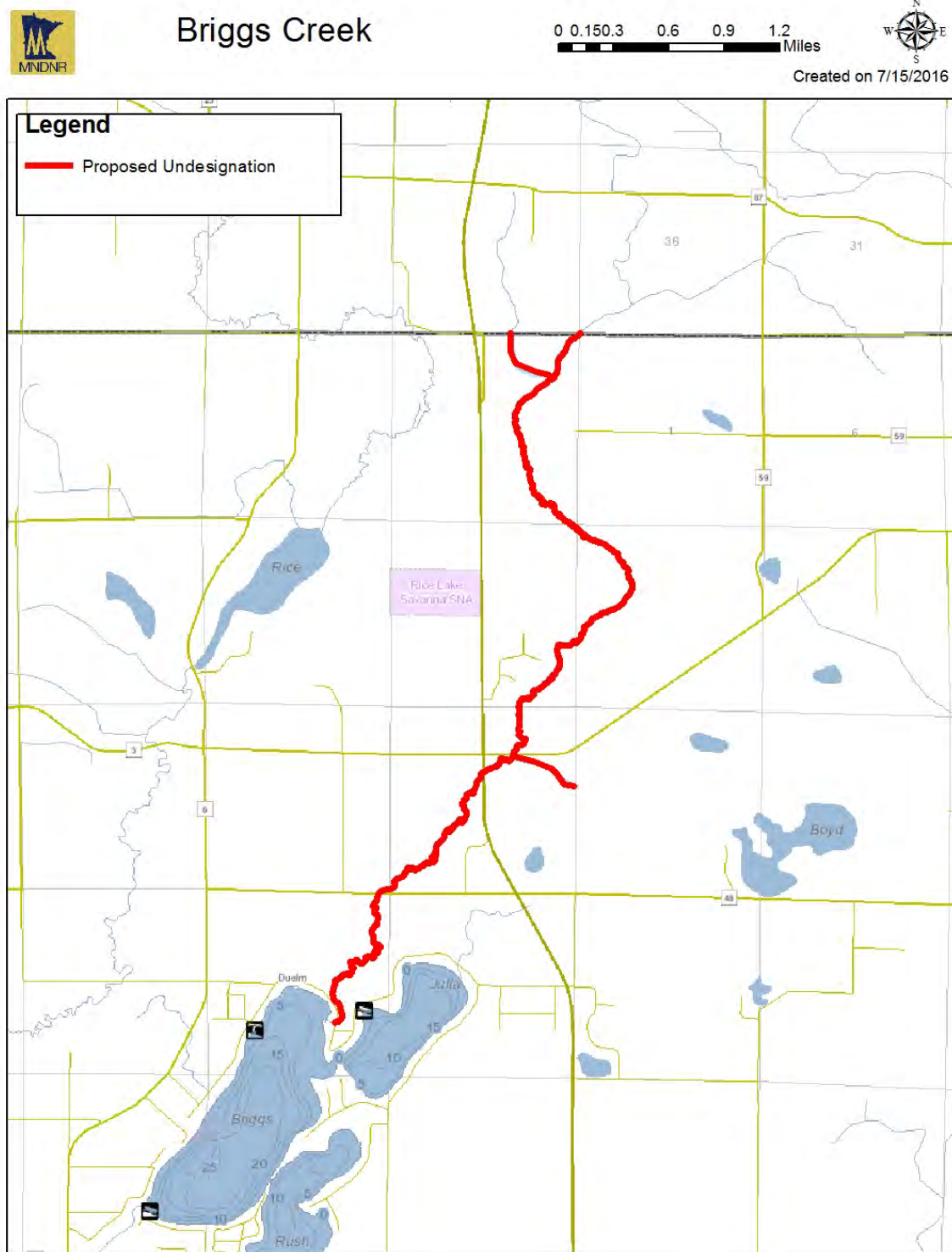
## Beaver Creek

This stream is managed as a county ditch, and thus has undergone significant habitat alterations through channel dredging and straightening. Stocking ceased in 1980, and trout have not been found since.



## Briggs Creek

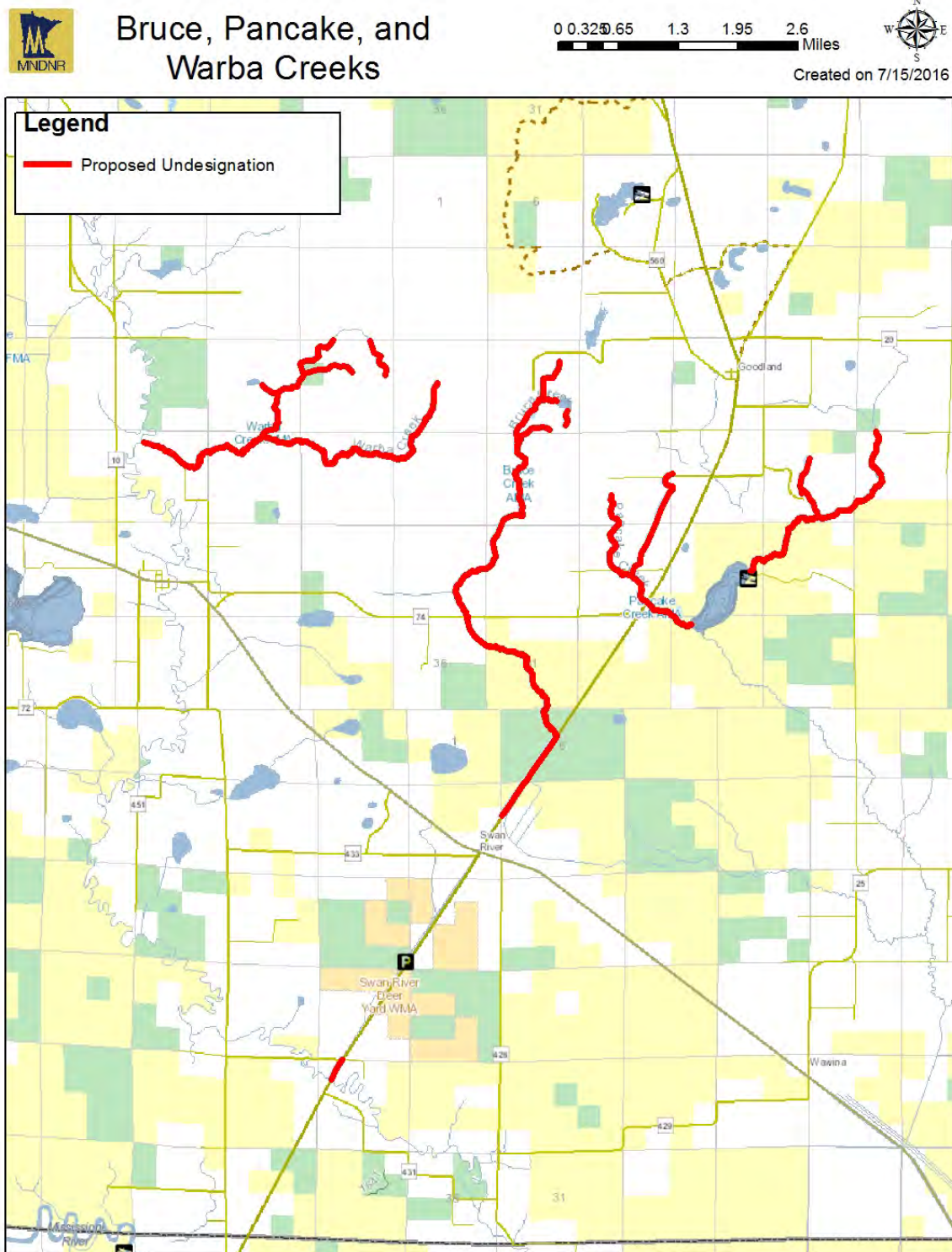
Managed as a put-and-take fishery for brown trout, stocking was discontinued in 1980 due to a lack of survival and angler use. Natural reproduction was never documented. MPCA is considering reclassification of Briggs Creek as a warmwater stream.





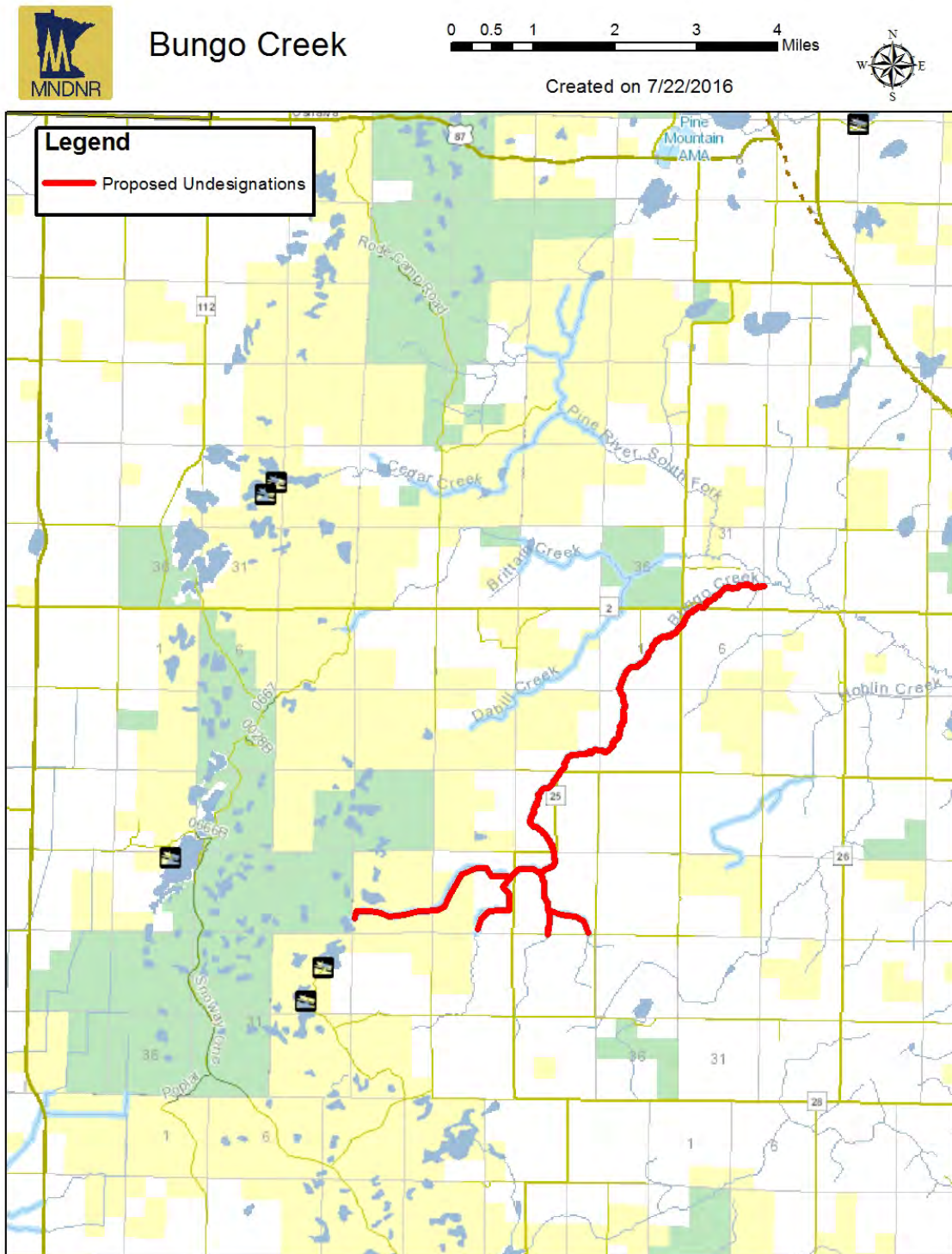
## Bruce Creek

This stream was stocked as a put-and-take opportunity until 1977, when a lack of survival and angler usage lead to a discontinuation of stocking. The proposed undesignation of Pancake and Warba Creeks are covered on separate pages.



## Bungo Creek

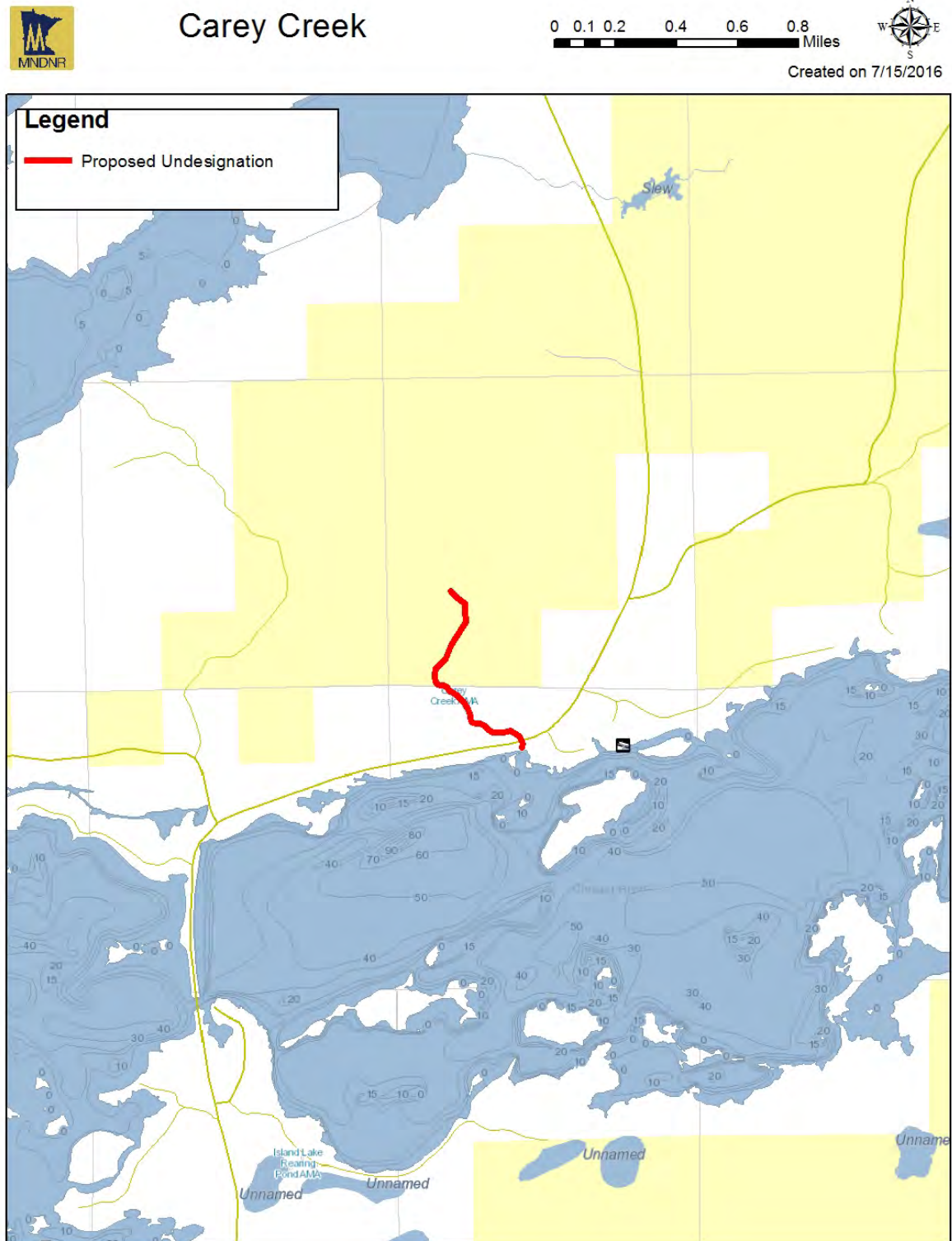
Stocked with brook trout in 1971, survival was poor and stocking was discontinued after only one year. MPCA is proposing reclassification of Bungo Creek as a warmwater stream.



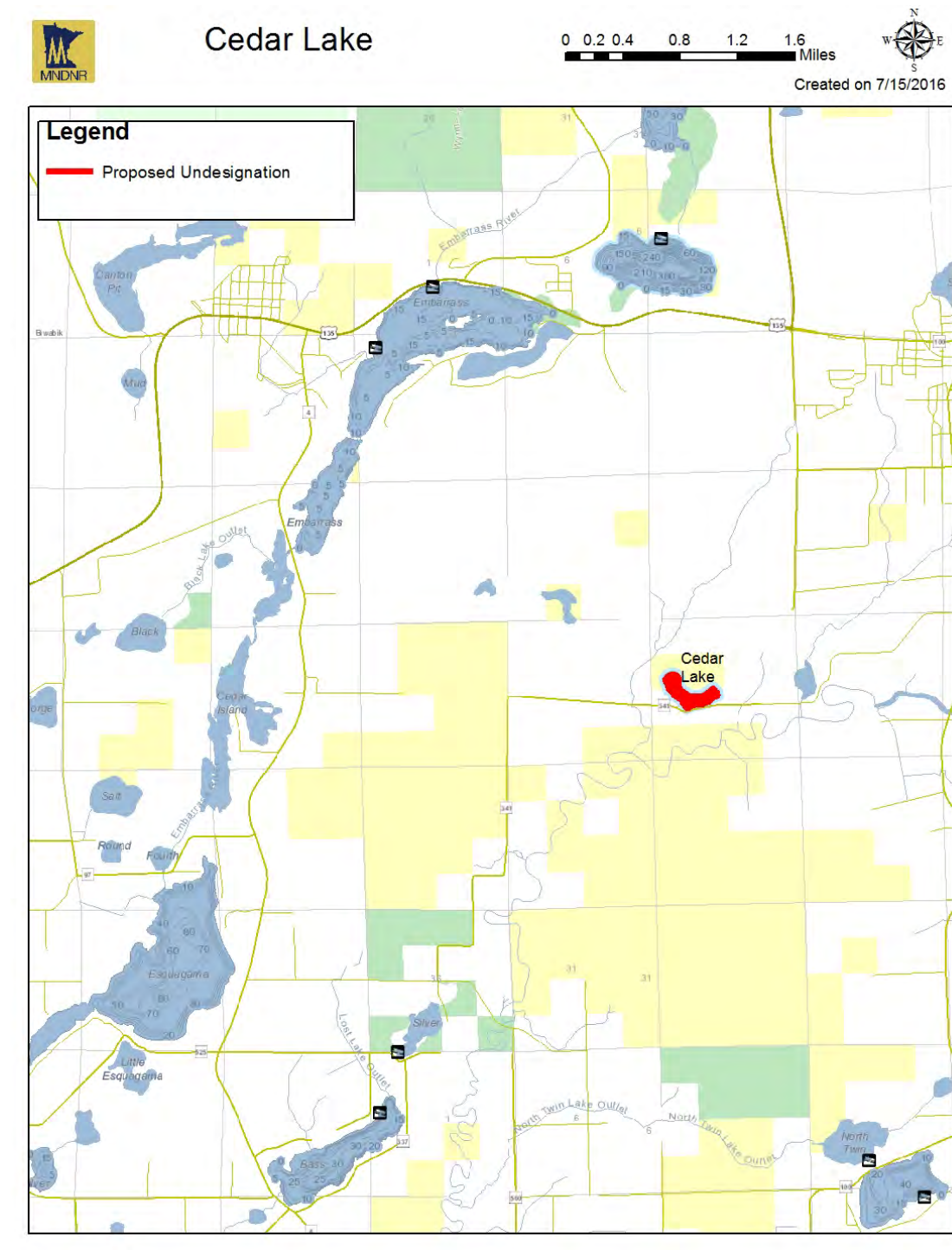


## Carey Creek

This stream was stocked with catchable-sized brown and rainbow trout until 1989, when stocking ceased due to poor survival and angler use. Recent surveys have not found trout, and documented water temperatures too warm for trout to survive in some years.

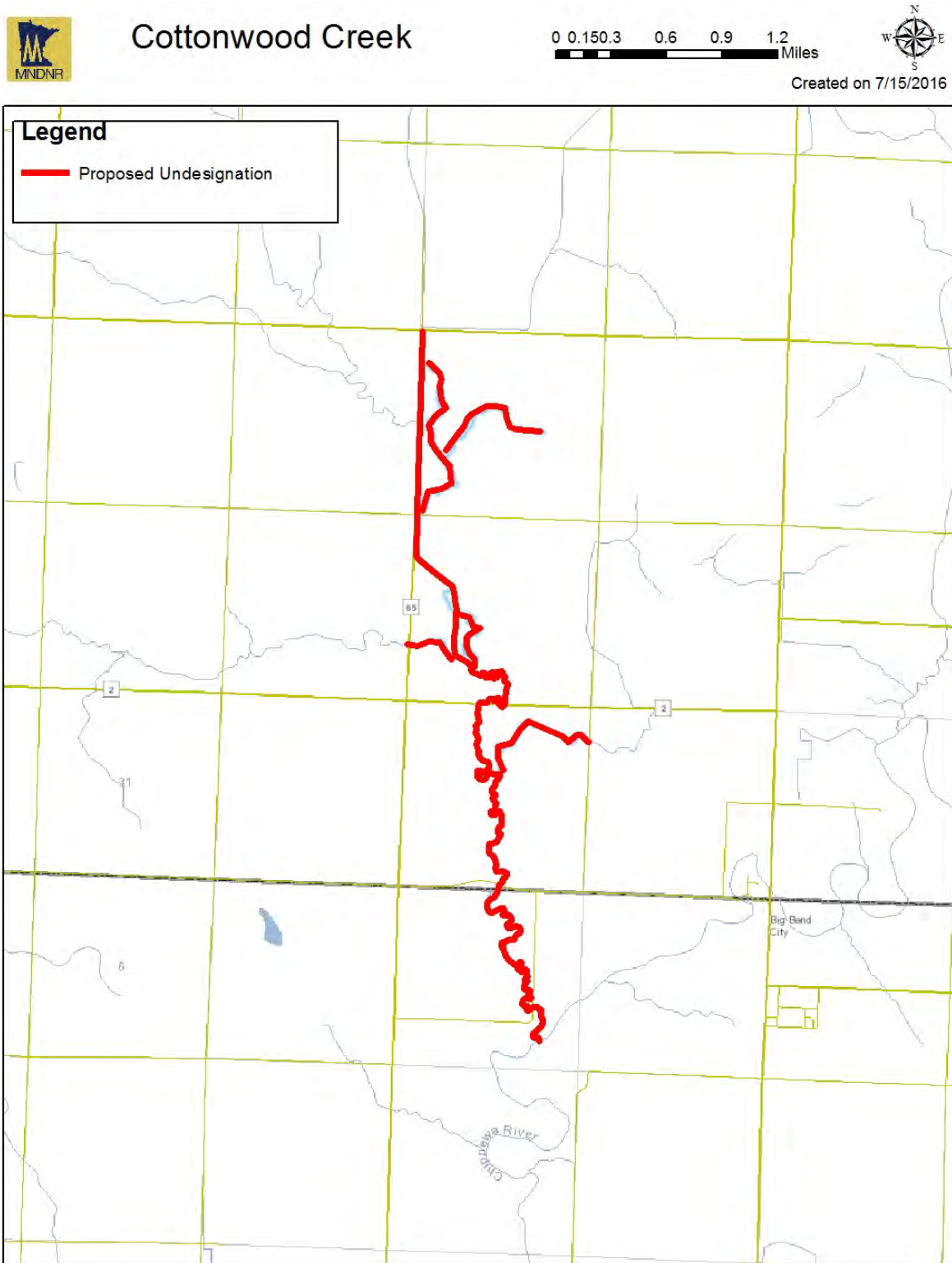


This lake is no longer managed for trout due to the presence of numerous species of fish that would compete or prey upon trout.



## Cottonwood Creek

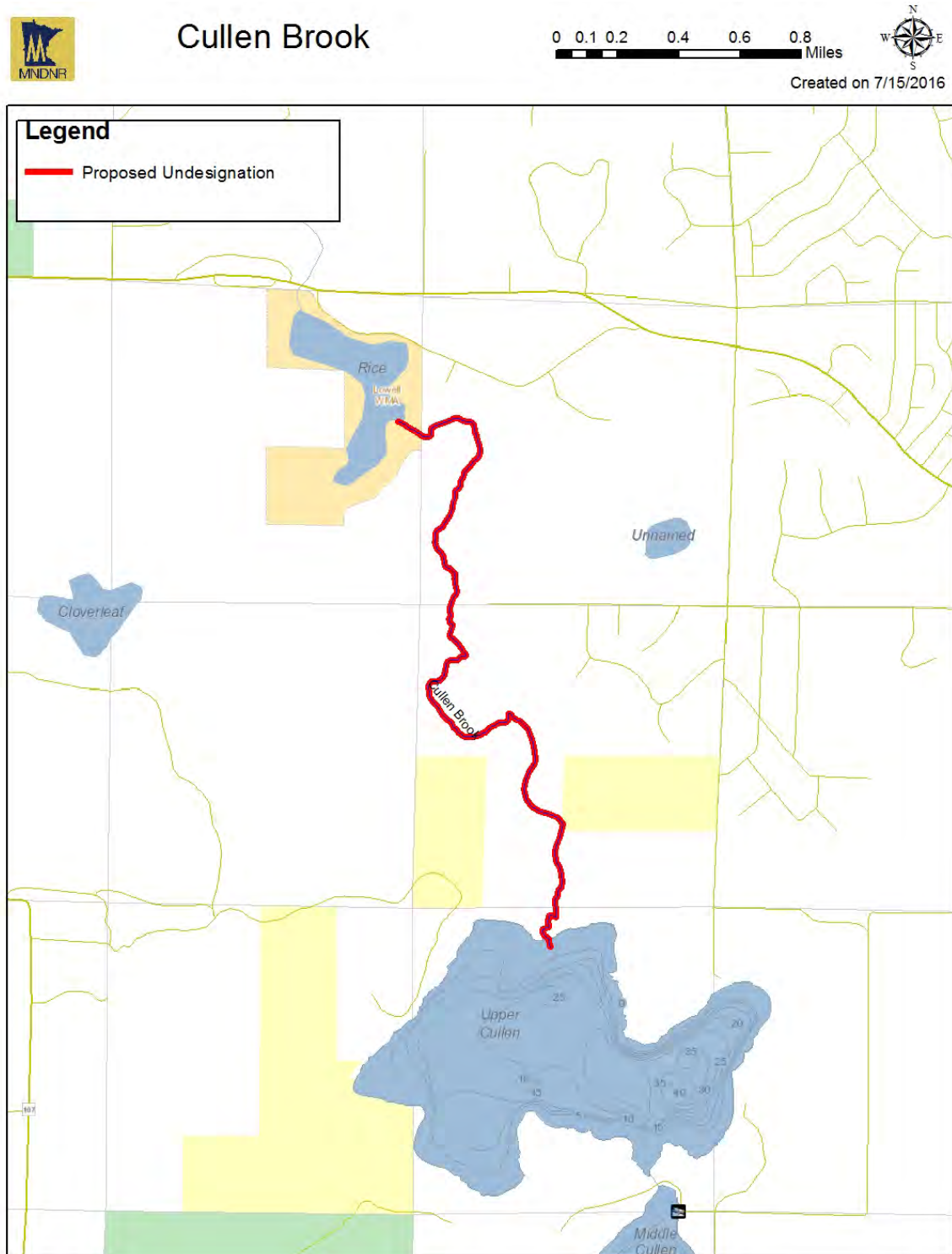
Cottonwood Creek was stocked with catchable-sized brown trout as a put-and-take opportunity from 1987 to 1993. Stocking was discontinued due to poor survival and return to anglers.





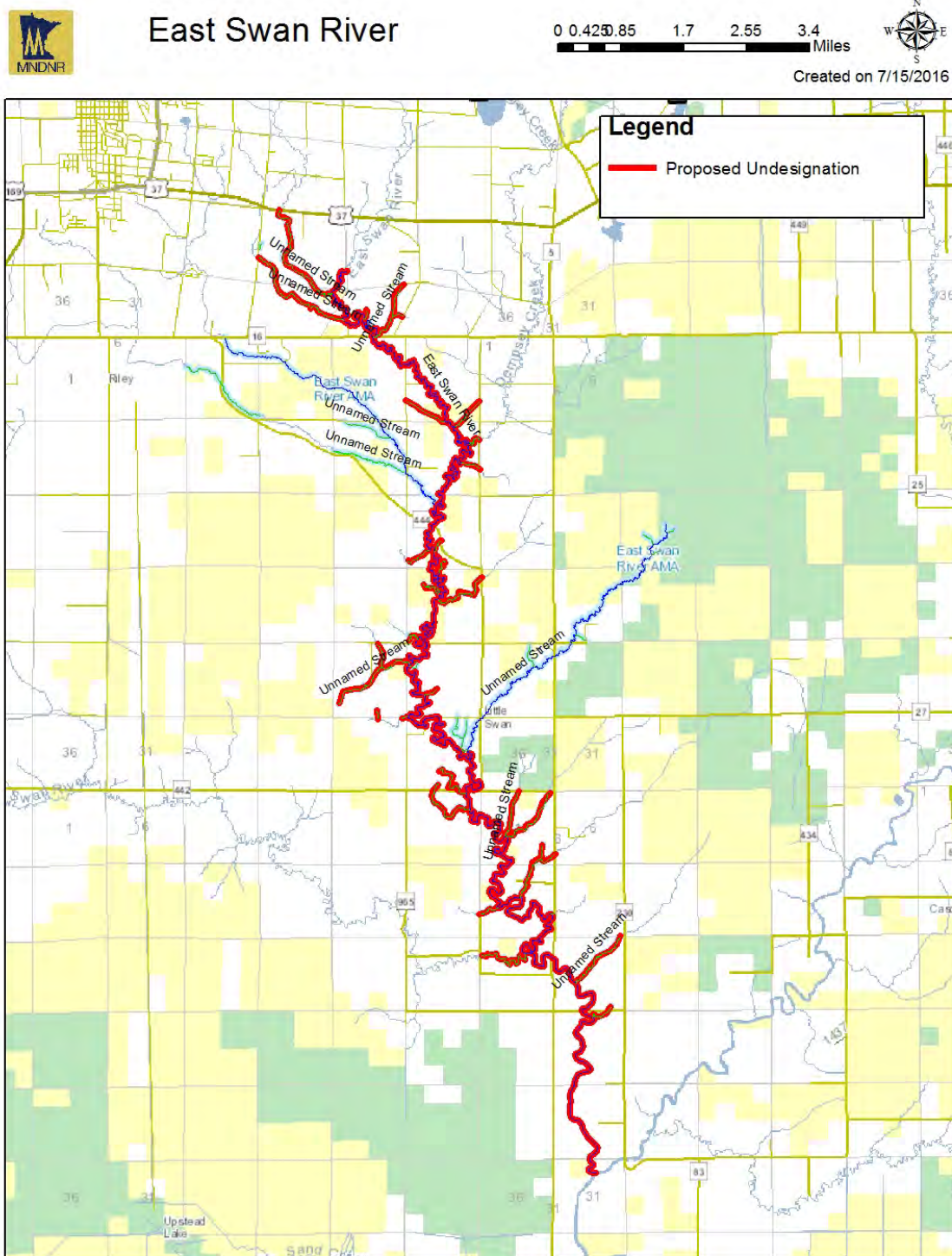
## Cullen Brook

No trout have been documented since prior to a 1965 survey. Poor habitat conditions for trout predominate.



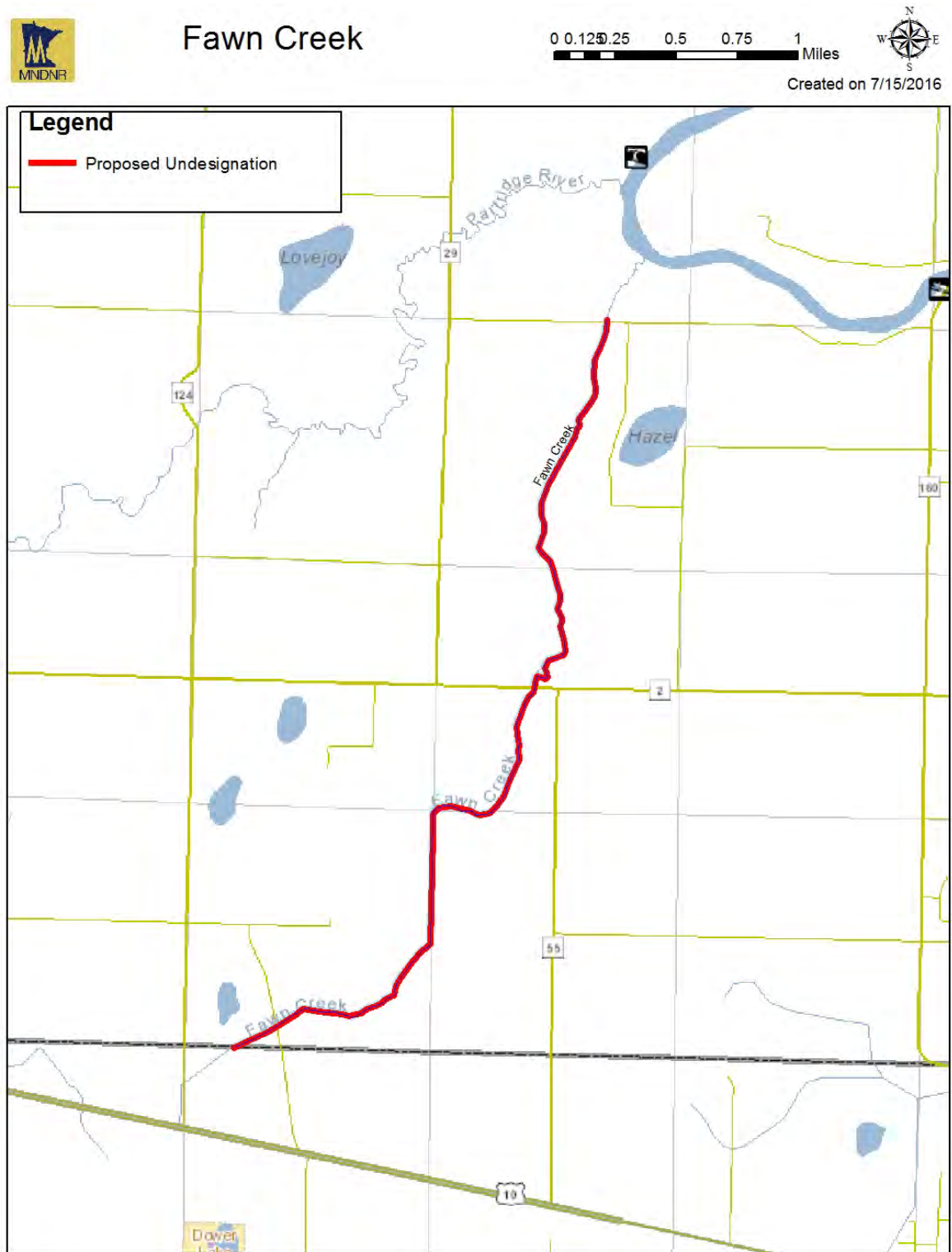
## East Swan River

This stream was stocked six times with brown trout fingerlings from 1981 to 1994. Stocking was ceased due to poor survival. Habitat conditions are poor for trout. MPCA has proposed classifying the East Swan River as a warmwater stream.



## Fawn Creek

Trout have not been documented since stocking was ceased in 1965. Poor habitat conditions, including warm water temperatures that would not support trout in most years.





## Finn Creek

Trout stocking ceased in 1962, and have not been documented in subsequent surveys. Poor habitat conditions predominate.

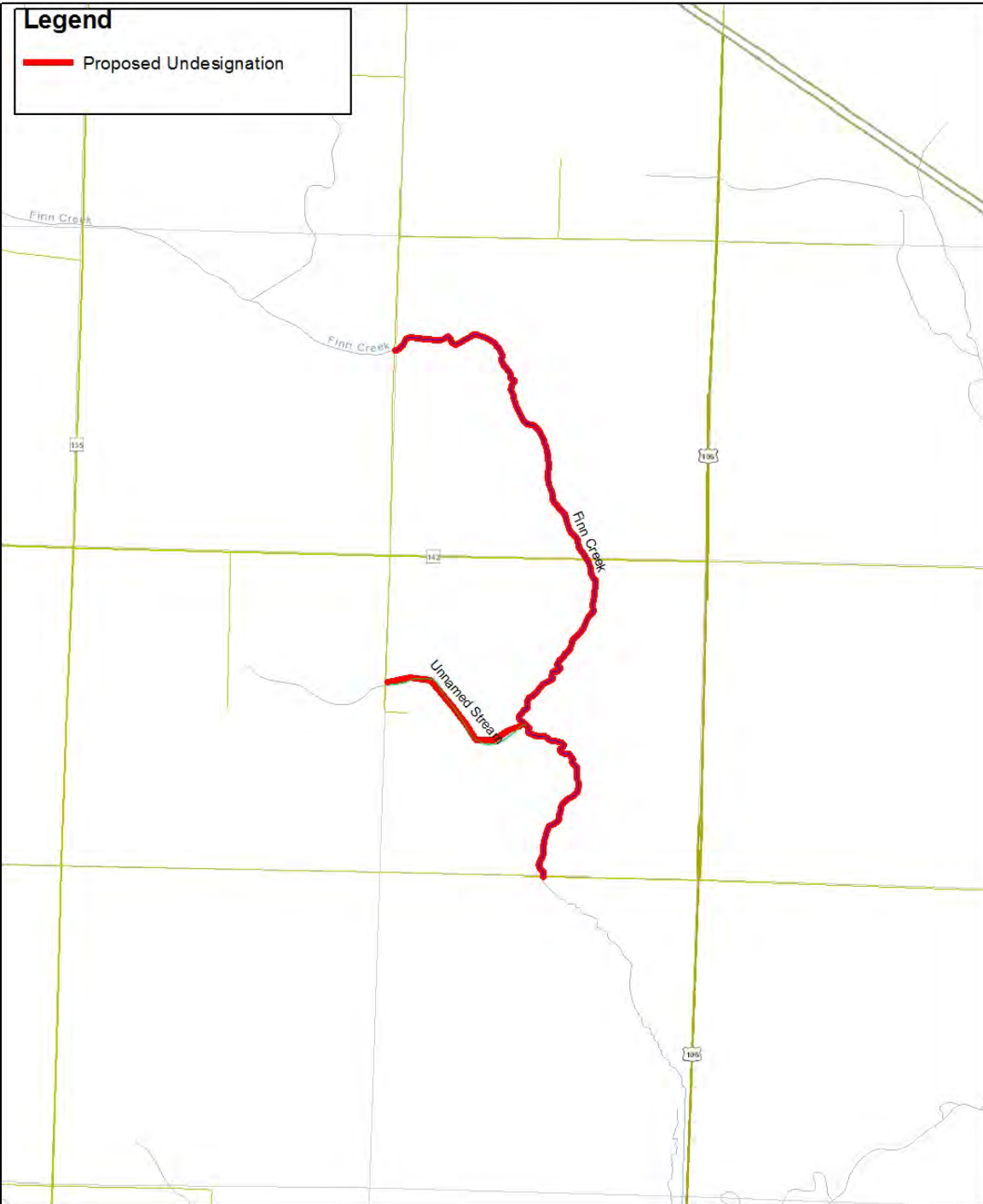


## Finn Creek

0 0.1 0.2 0.4 0.6 0.8 Miles

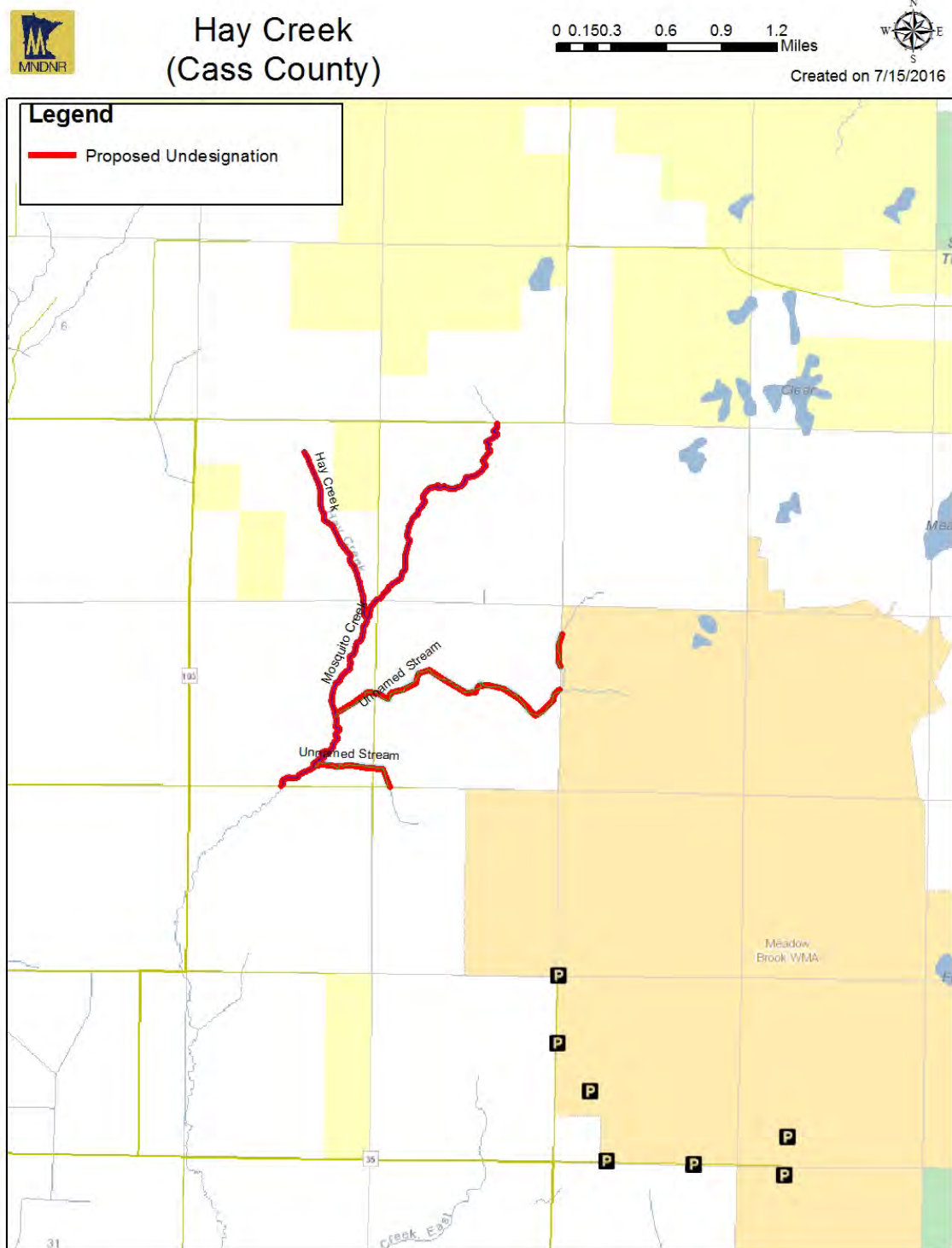


Created on 7/15/2016



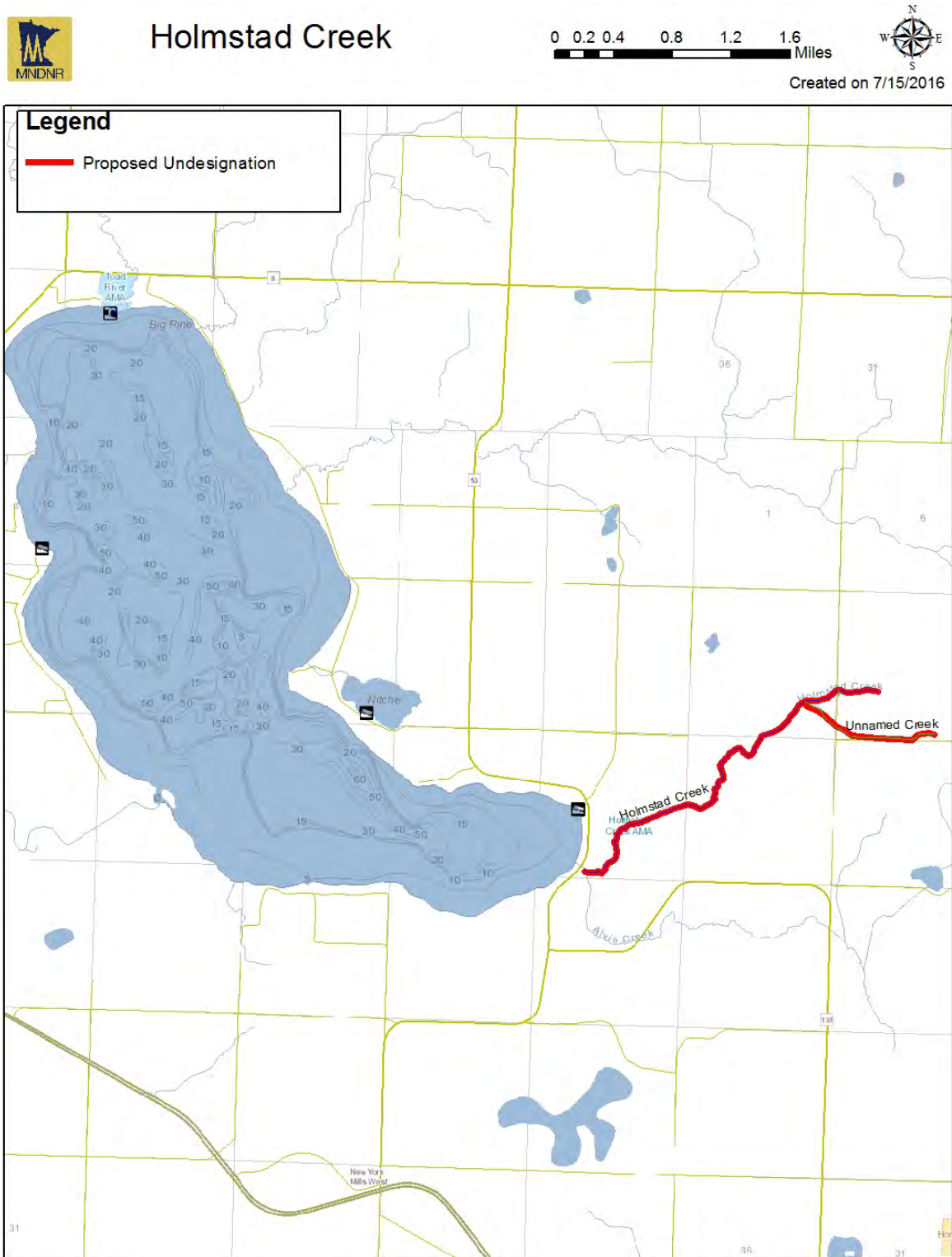
## Hay Creek (Cass County)

Only two stockings of brook trout were made in this stream with poor success, so stocking was ceased. No trout have been documented since, and poor habitat conditions predominate. The proposal to undesignate Mosquito Creek appears on a separate page.



## Holmstad Creek

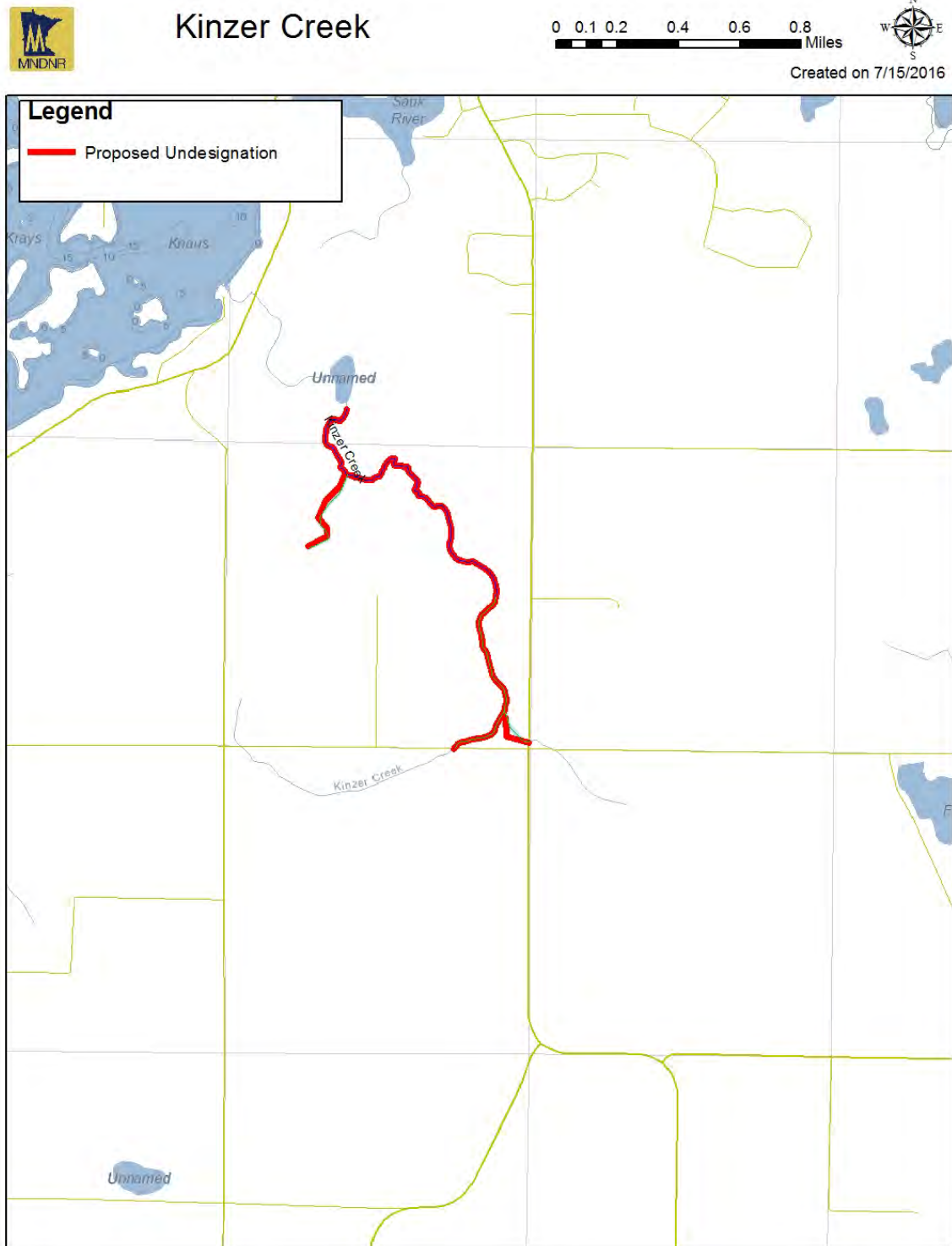
No trout stocking has occurred in this stream since 1966, and trout have not been documented in subsequent surveys. Poor habitat conditions predominate.





## Kinzer Creek

Brook trout were stocked between 1949 and 1979, when stocking was ceased due to low angler return. Low numbers of trout were found for a few years, but disappeared completely by 1989. Poor habitat conditions, including warm water temperatures, would prevent trout from surviving in most years.



## Libby Brook

No trout have been observed since last stocking in 1979. Stocking was ceased due to poor survival. Habitat conditions do not appear to be conducive to trout management.

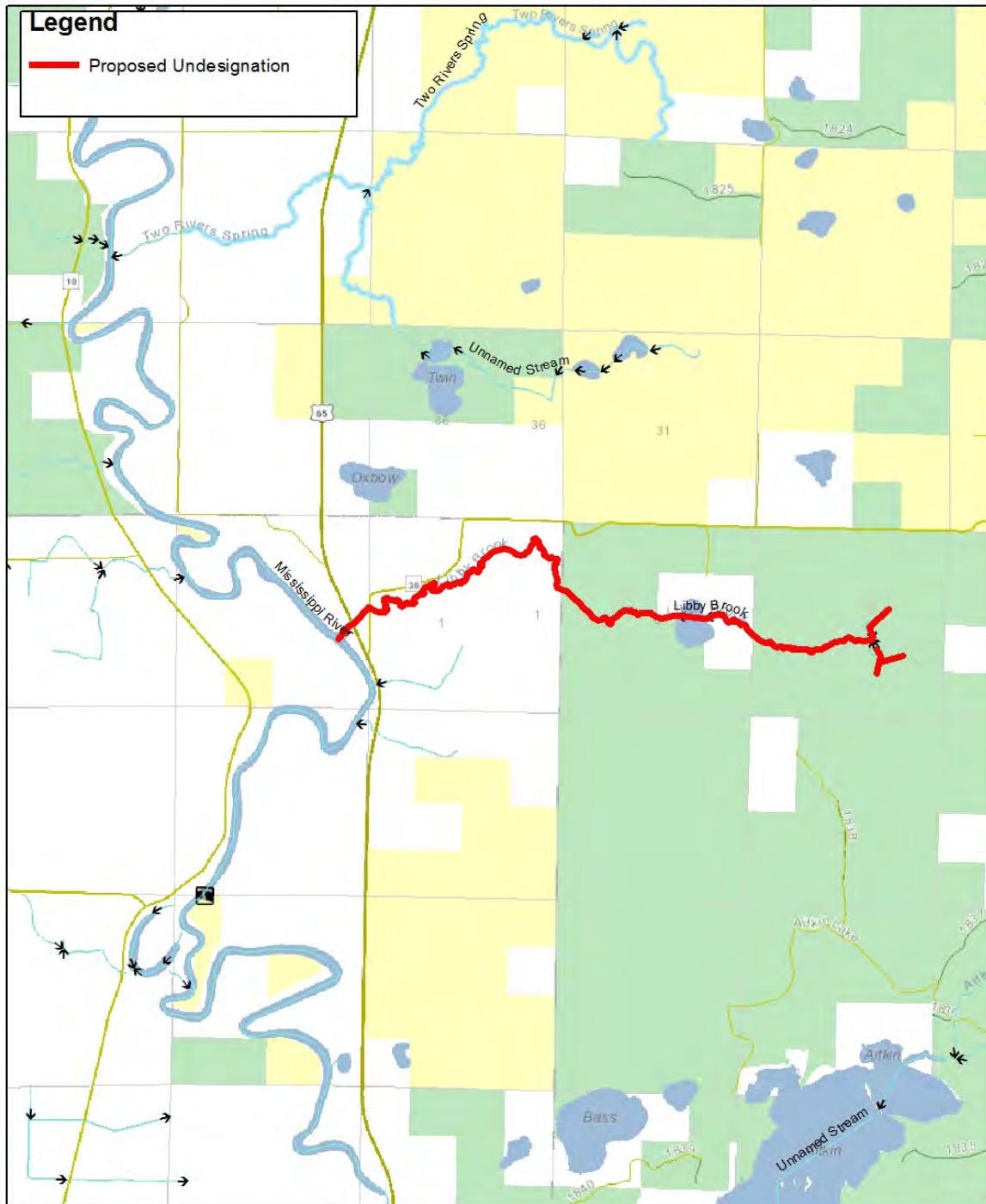


## Libby Brook

0 0.150.3 0.6 0.9 1.2 Miles

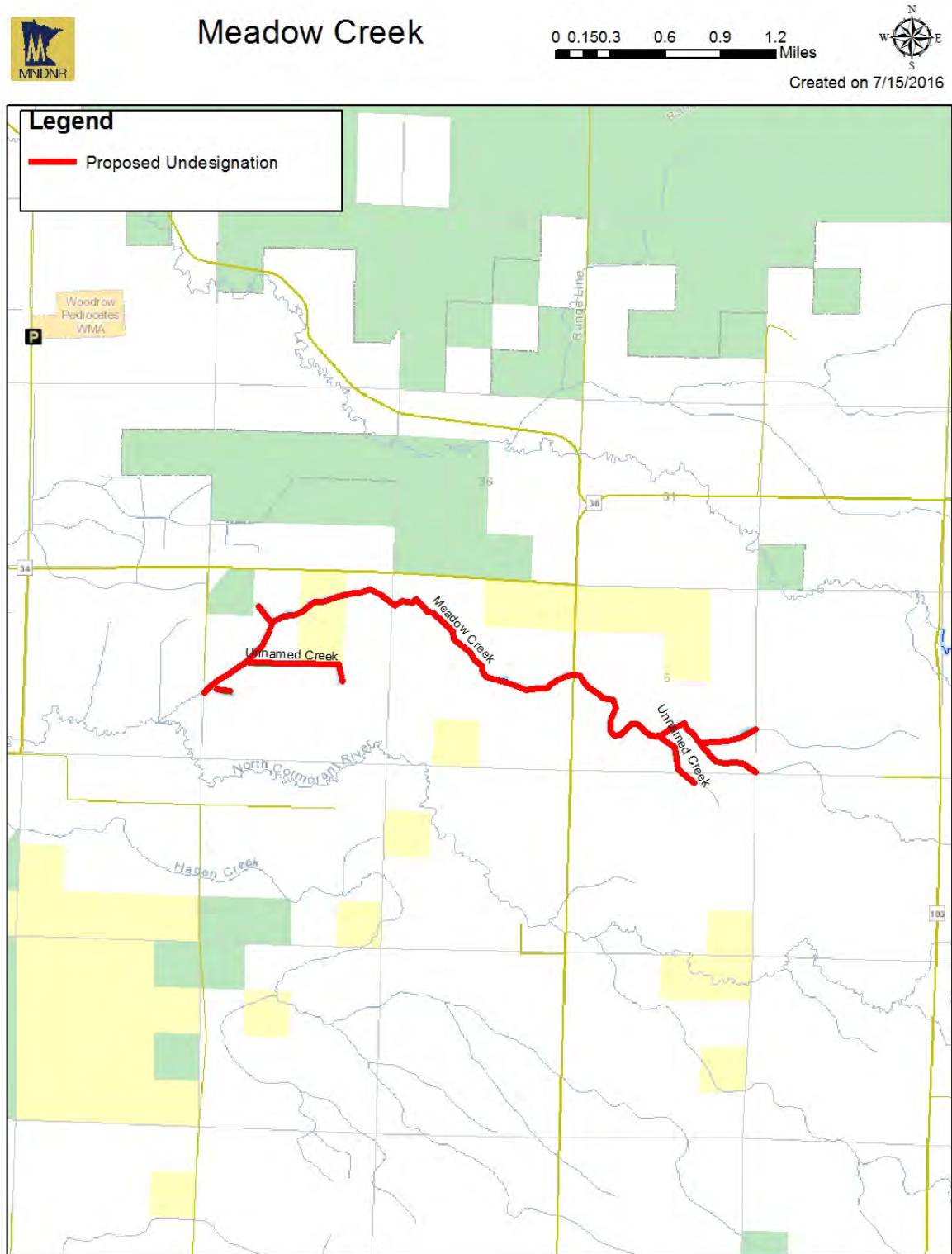


Created on 7/15/2016



## Meadow Creek

Last stocked in 1975, and no trout were documented in 1977 or since. Poor habitat conditions predominate.





## Michaud Brook

No history of trout management or presence in this stream. Poor habitat conditions to not seem conducive to trout survival.

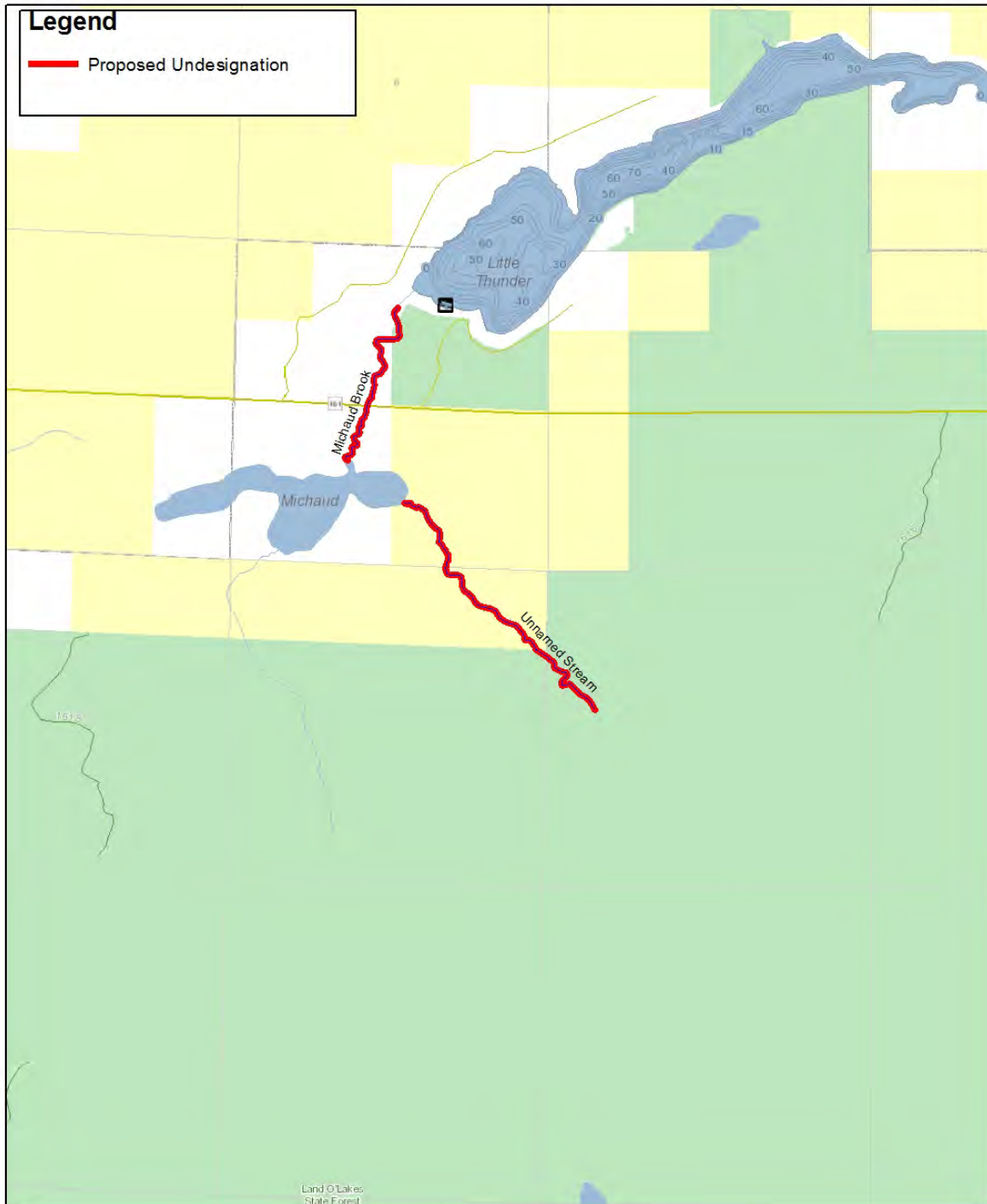


### Michaud Brook

0 0.1 0.2 0.4 0.6 0.8 Miles

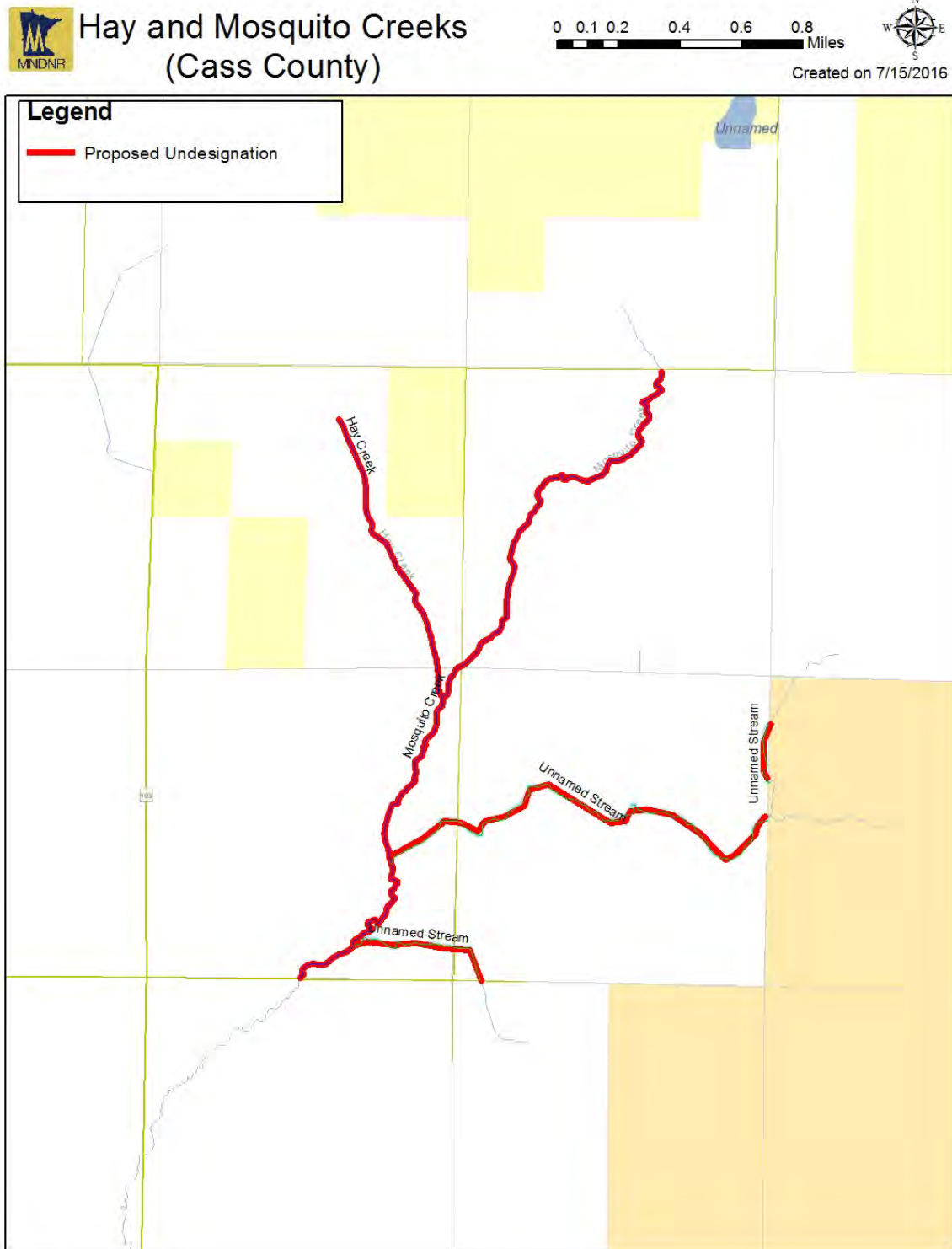


Created on 7/15/2016



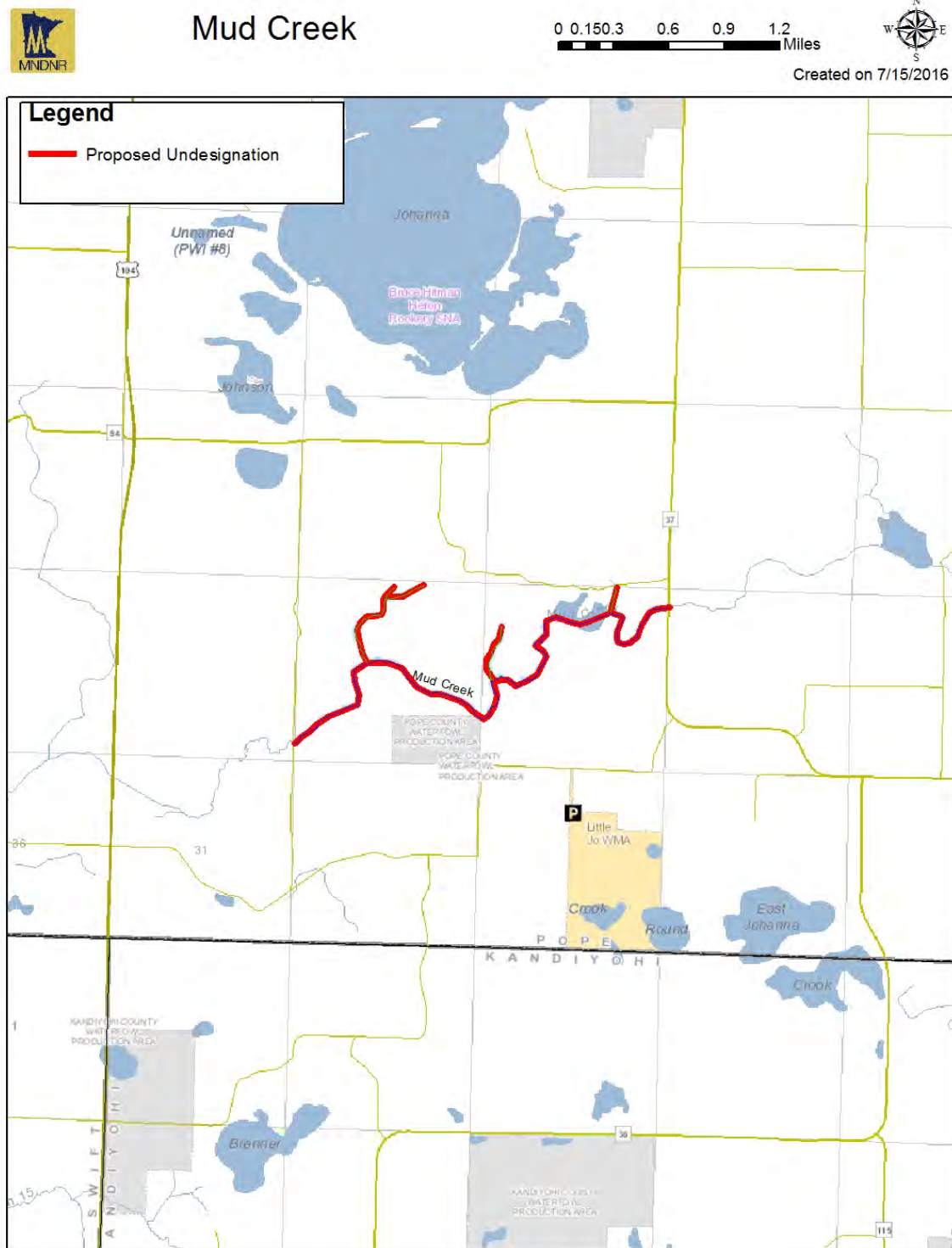
## Mosquito Creek

Only two stockings of brook trout were made in this stream with poor success, so stocking was ceased. No trout have been documented since, and poor habitat conditions predominate. The proposal to undesignate Hay Creek appears on a separate page.



## Mud Creek

Only one trout stocking was attempted in 1978. One surviving trout was found in a 1979 survey. No stocking has been done since, and present habitat conditions indicate the stream is too warm for trout to survive in most years. Mud Creek is located in the Bonanza Valley Groundwater Management Area.





## Nelson Hay Creek

Brook trout were stocked until 1971, but are no longer present. Survival apparently was poor during the period of stocking. The stream's small size and marginal temperatures limit its potential to support trout.

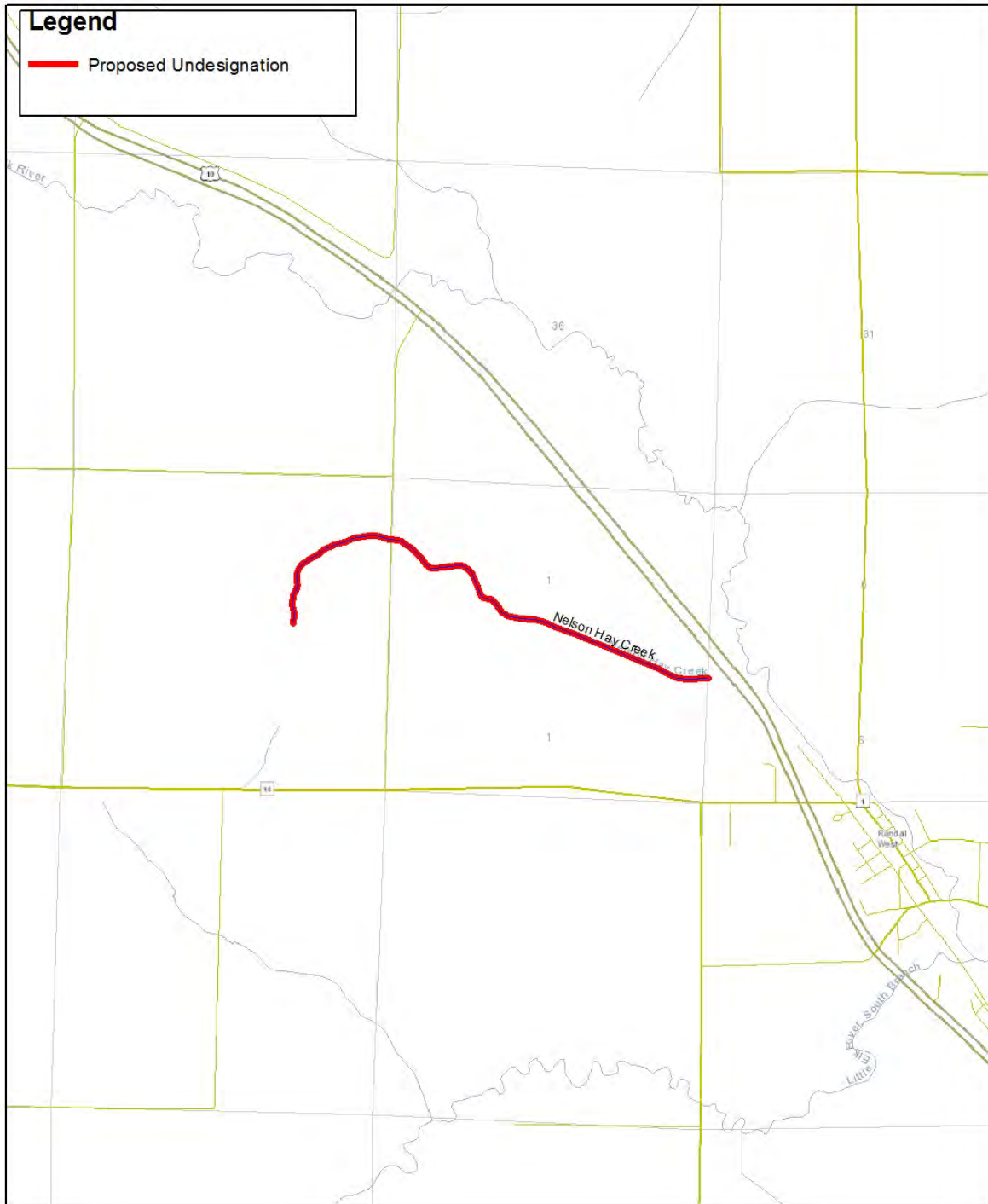


## Nelson Hay Creek

0 0.1 0.2 0.4 0.6 0.8 Miles

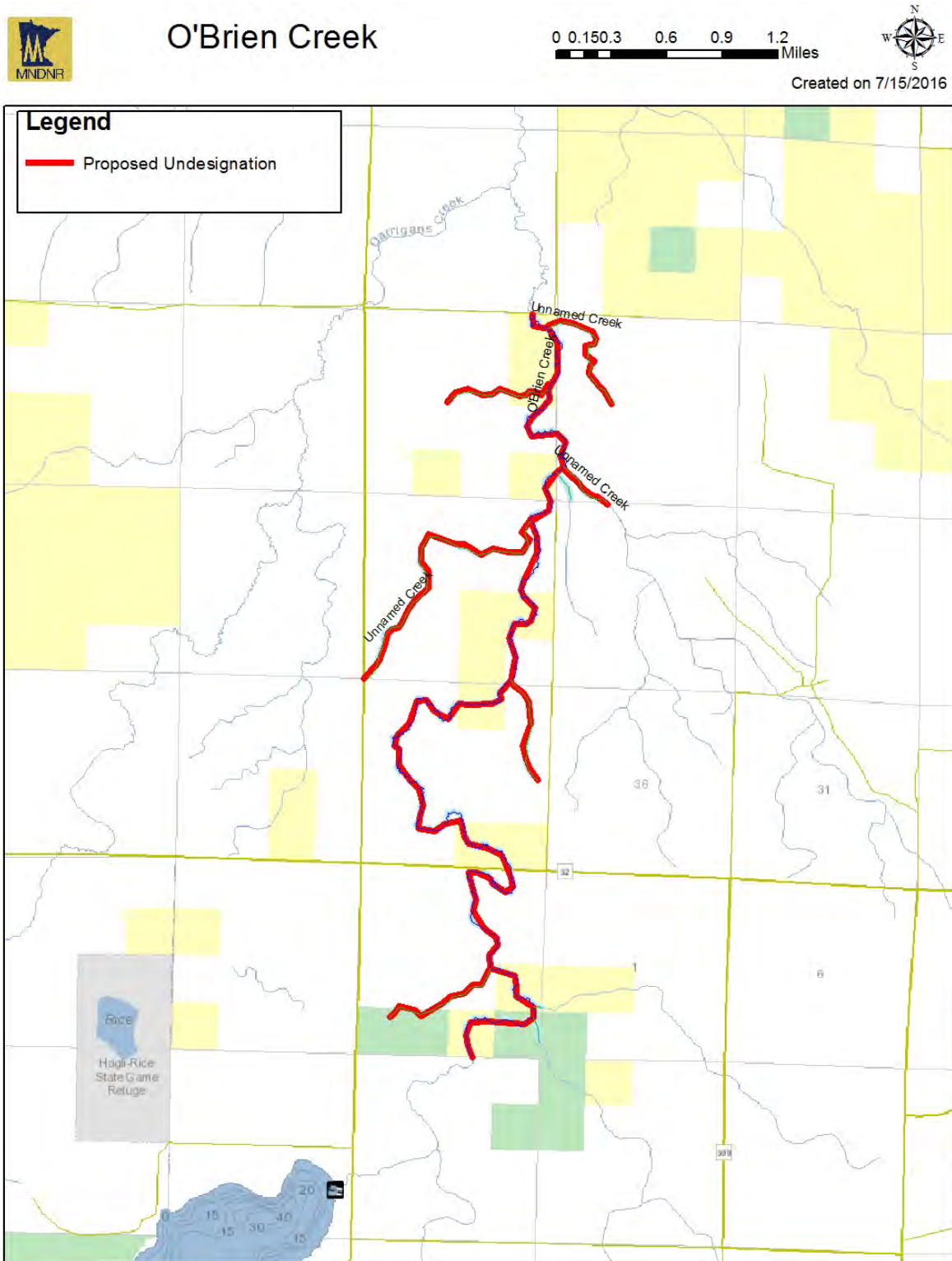


Created on 7/15/2016



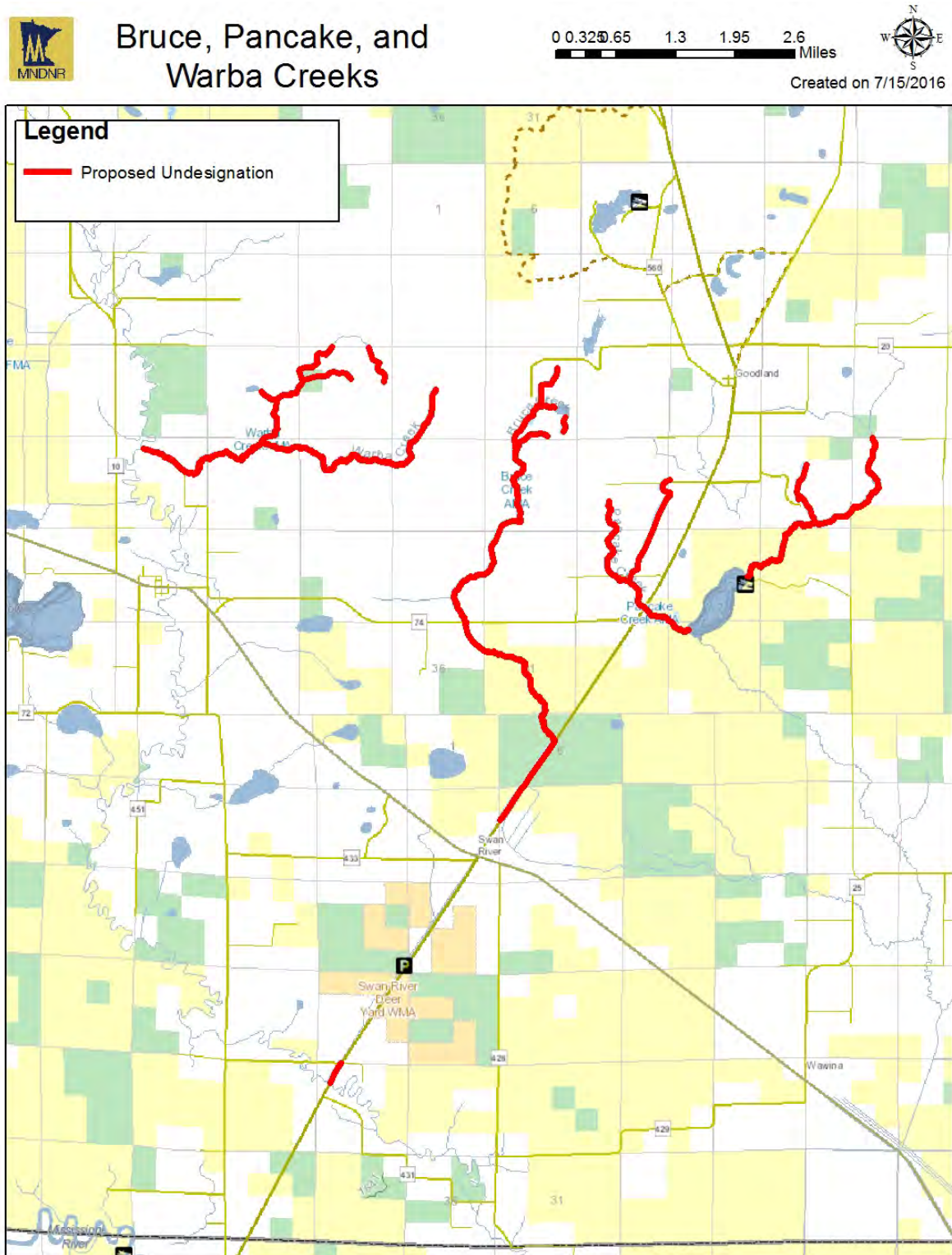
## O'Brien Creek

O'Brien Creek was stocked with catchable-sized trout from 1970 to 1985. Stocking ceased due to poor survival due to poor habitat conditions.



## Pancake Creek

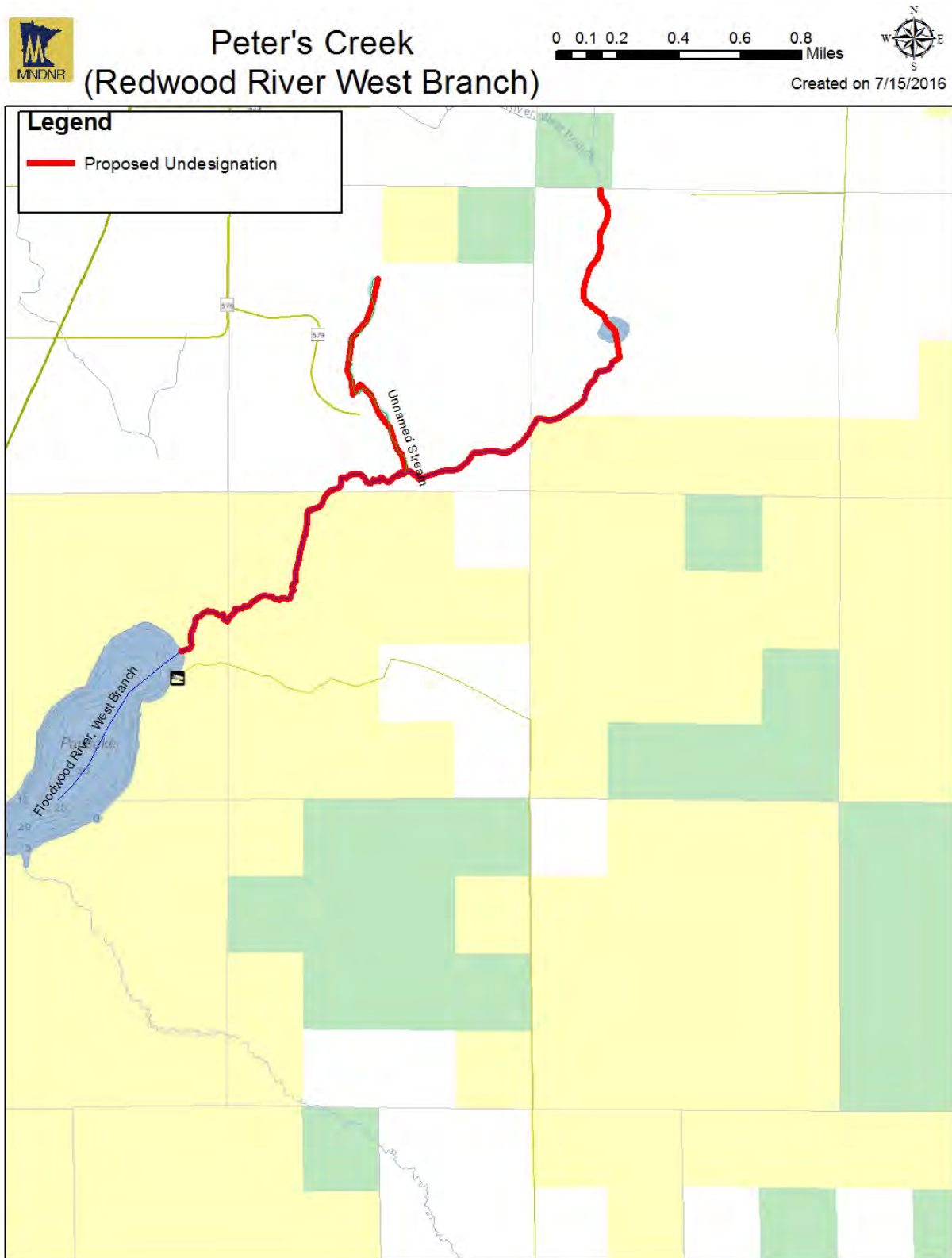
No trout sampled since 1977. Poor habitat conditions predominate. Descriptions of the Bruce and Warba Creek undesignation proposals are found on separate pages.



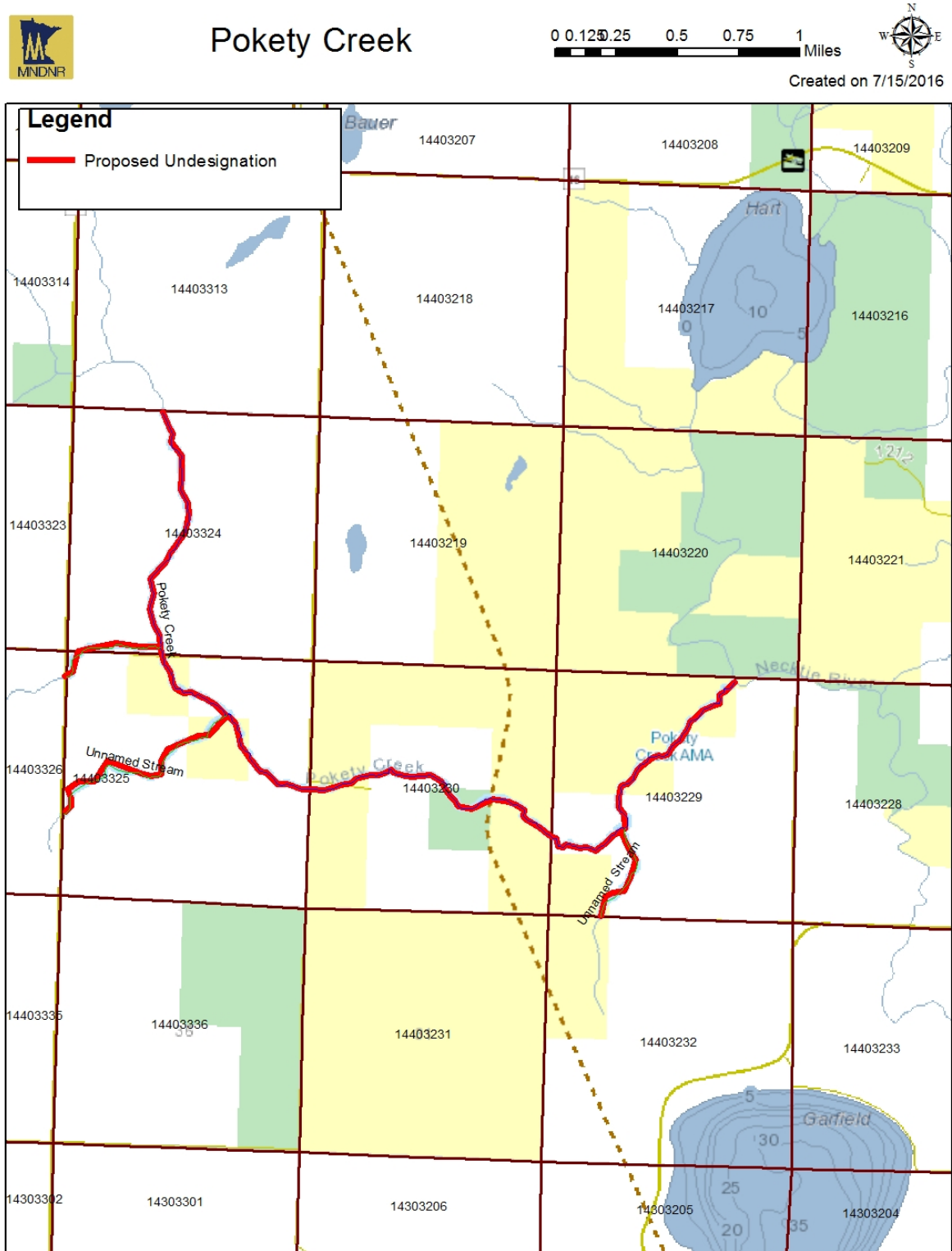


## Peter's Creek (Redwood River West Branch)

Trout were last sampled in 1979, the final year they were stocked. Poor habitat conditions predominate.

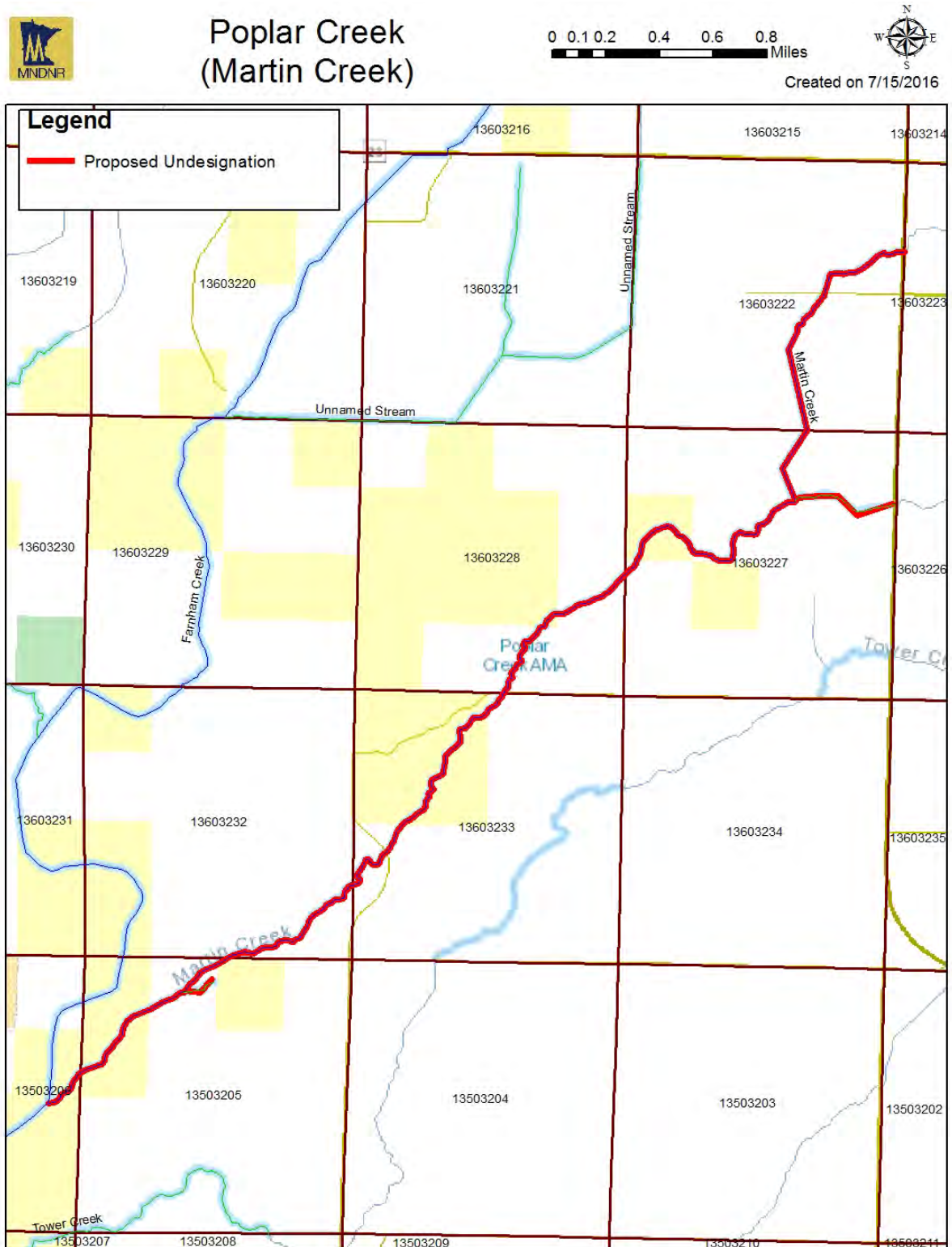


Stocked in the 1950's-70's as a put-and-take fishing opportunity. Trout have not been found since stocking ceased. Poor habitat conditions for trout currently predominate.



## Poplar Creek (Martin Creek)

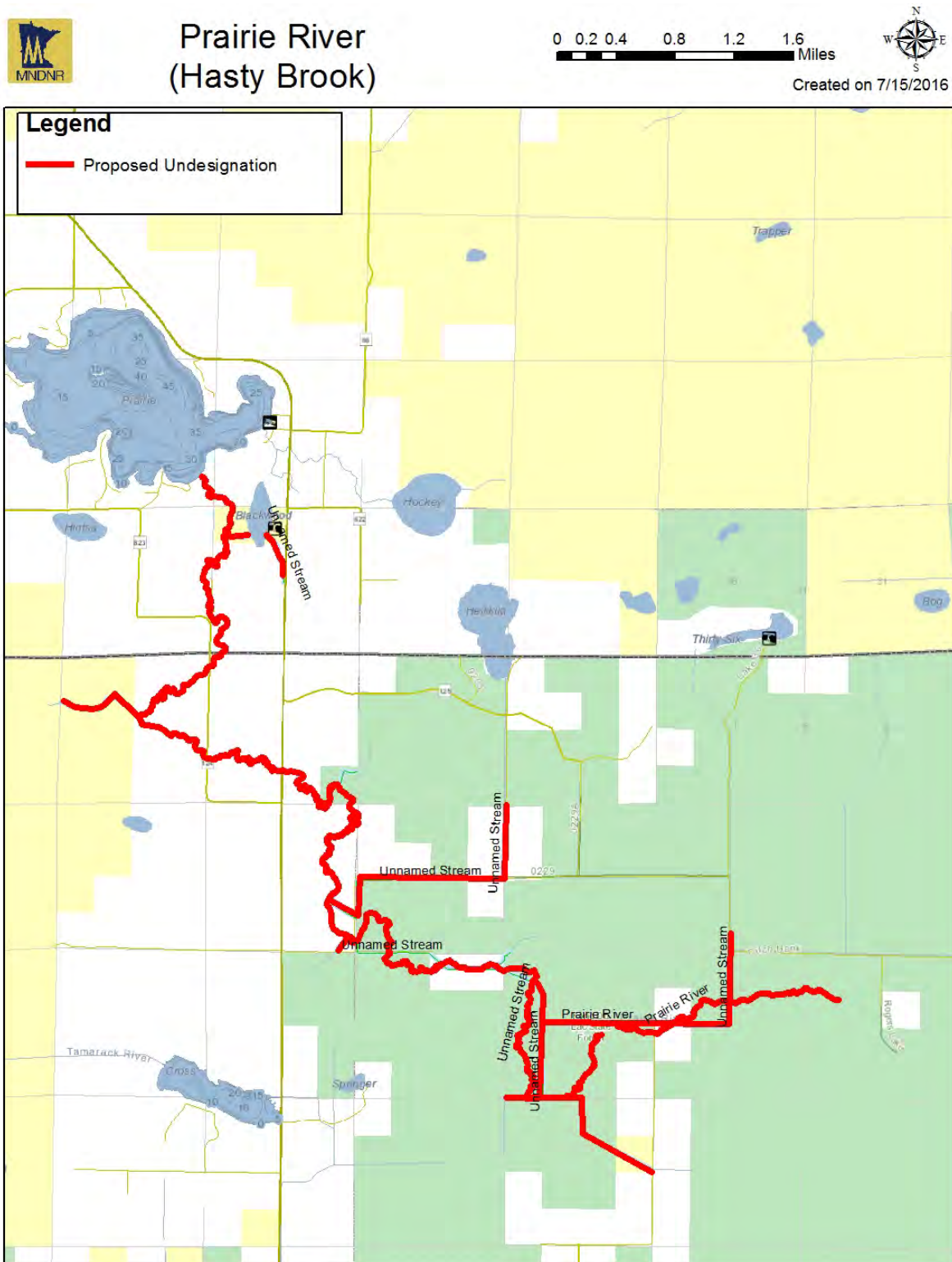
Last stocked in 1971. No trout found in 1975 survey or later. Poor habitat conditions predominate. MPCA has proposed to classify the stream as warmwater.





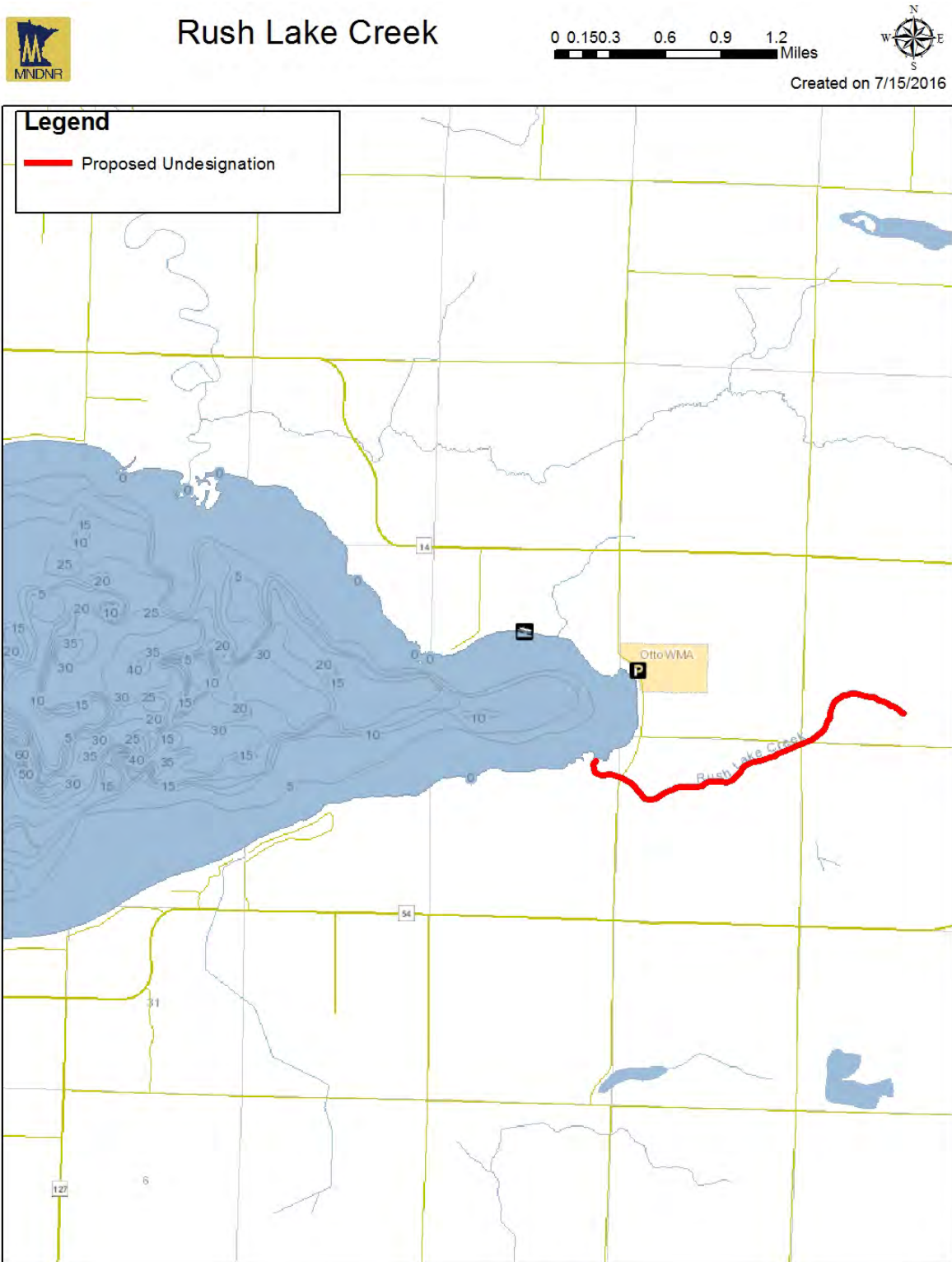
## Prairie River (Hasty Brook)

Brook trout were stocked in 1961 and 1963, but have never been found in subsequent surveys. Extensive ditching in the headwaters likely limits habitat.



## Rush Lake Creek

Trout stocking ceased in 1970, and trout have not been documented since. Poor habitat conditions predominate.



## Sissewabakwet Creek

No history of trout management or documentation of trout residing in this stream.

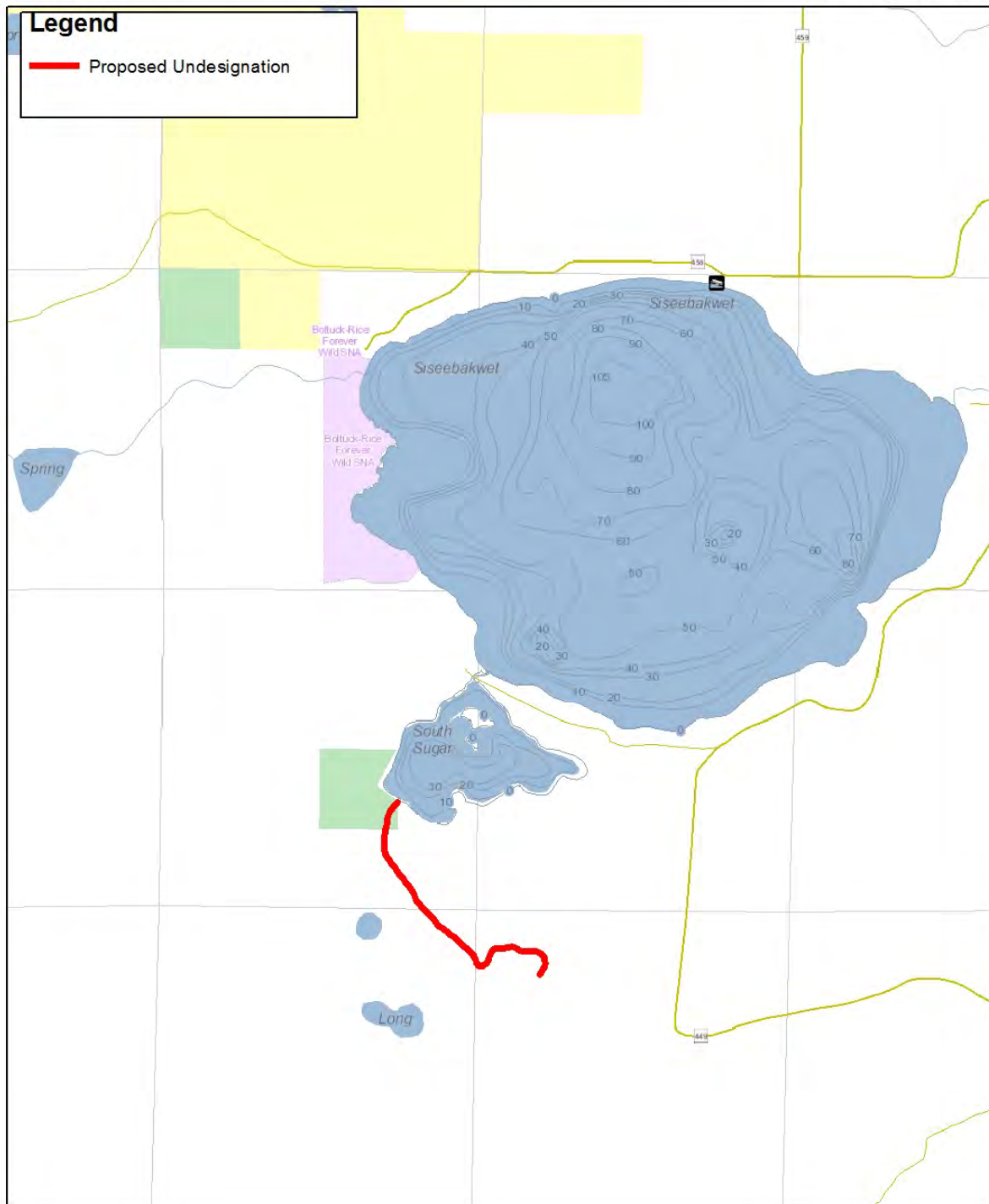


### Sisseebakwet Creek

0 0.1 0.2 0.4 0.6 0.8 Miles



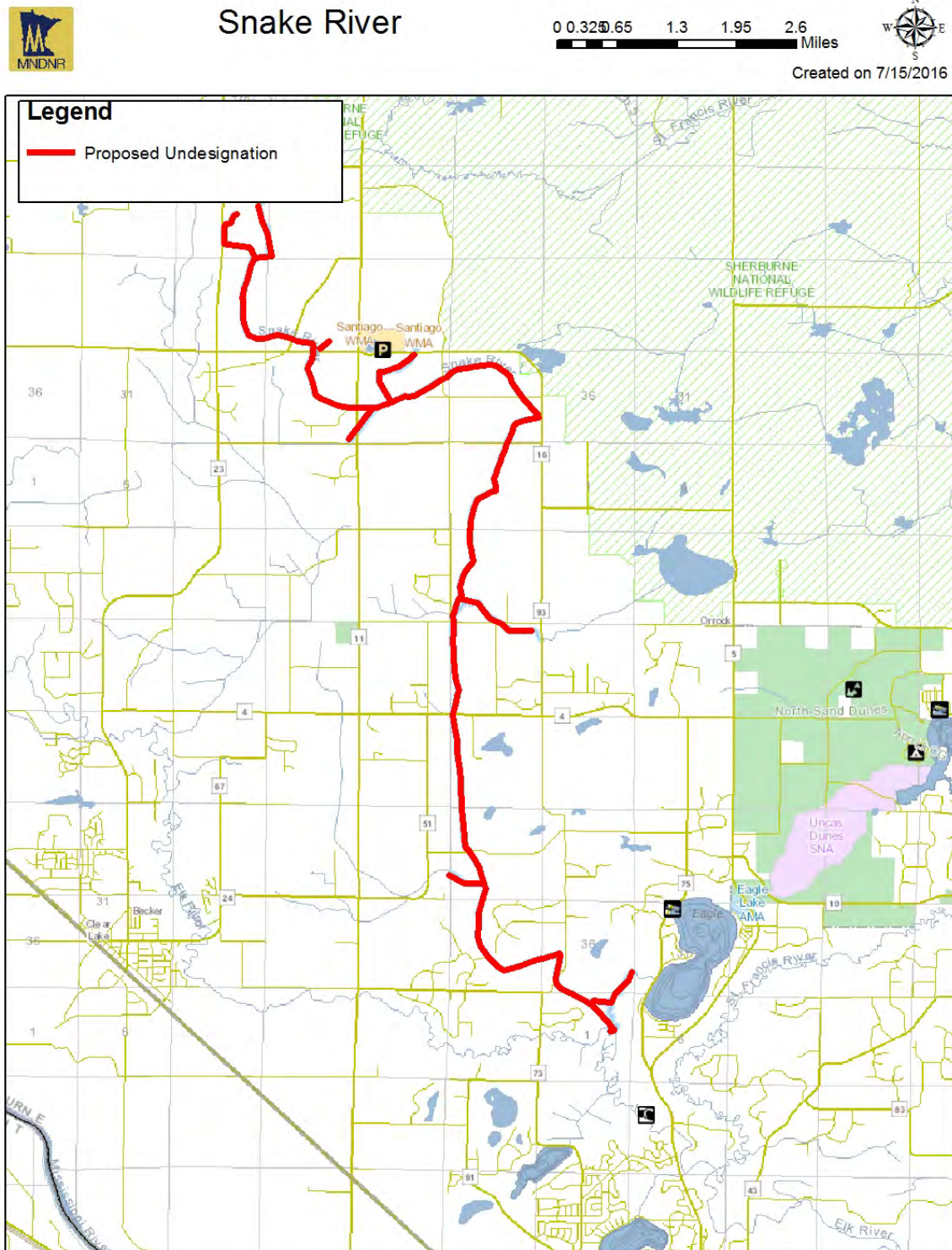
Created on 7/15/2016





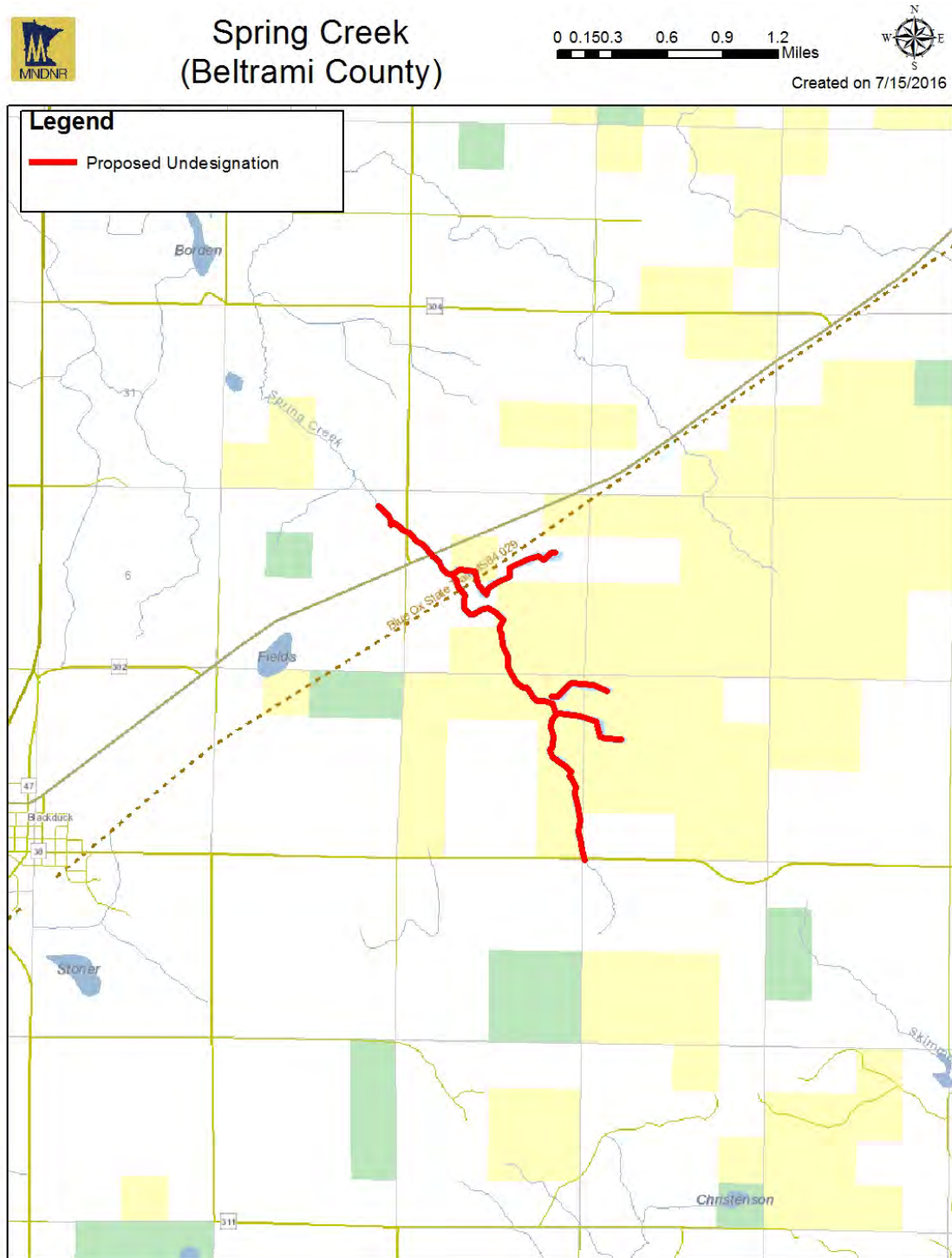
## Snake River

Snake Creek was stocked as put-and-take opportunity from 1972-1979. Stocking was ceased due to poor angler returns, and trout have not been documented since. Low gradient results in silty conditions that are poor habitat for trout.



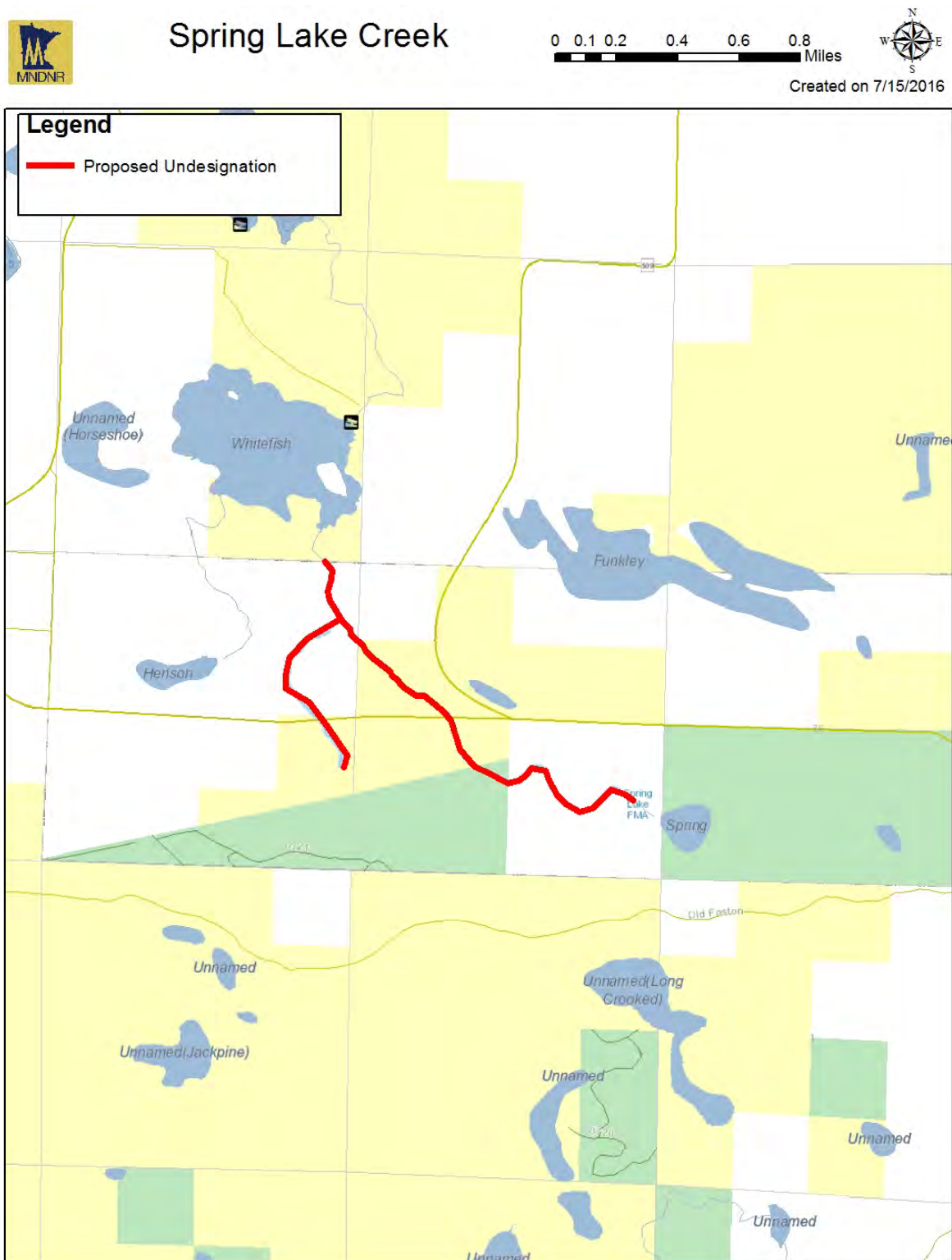
## Spring Creek (Beltrami County)

This stream was last stocked in 1979, and trout have not been documented since. Poor habitat conditions predominate.



## Spring Lake Creek

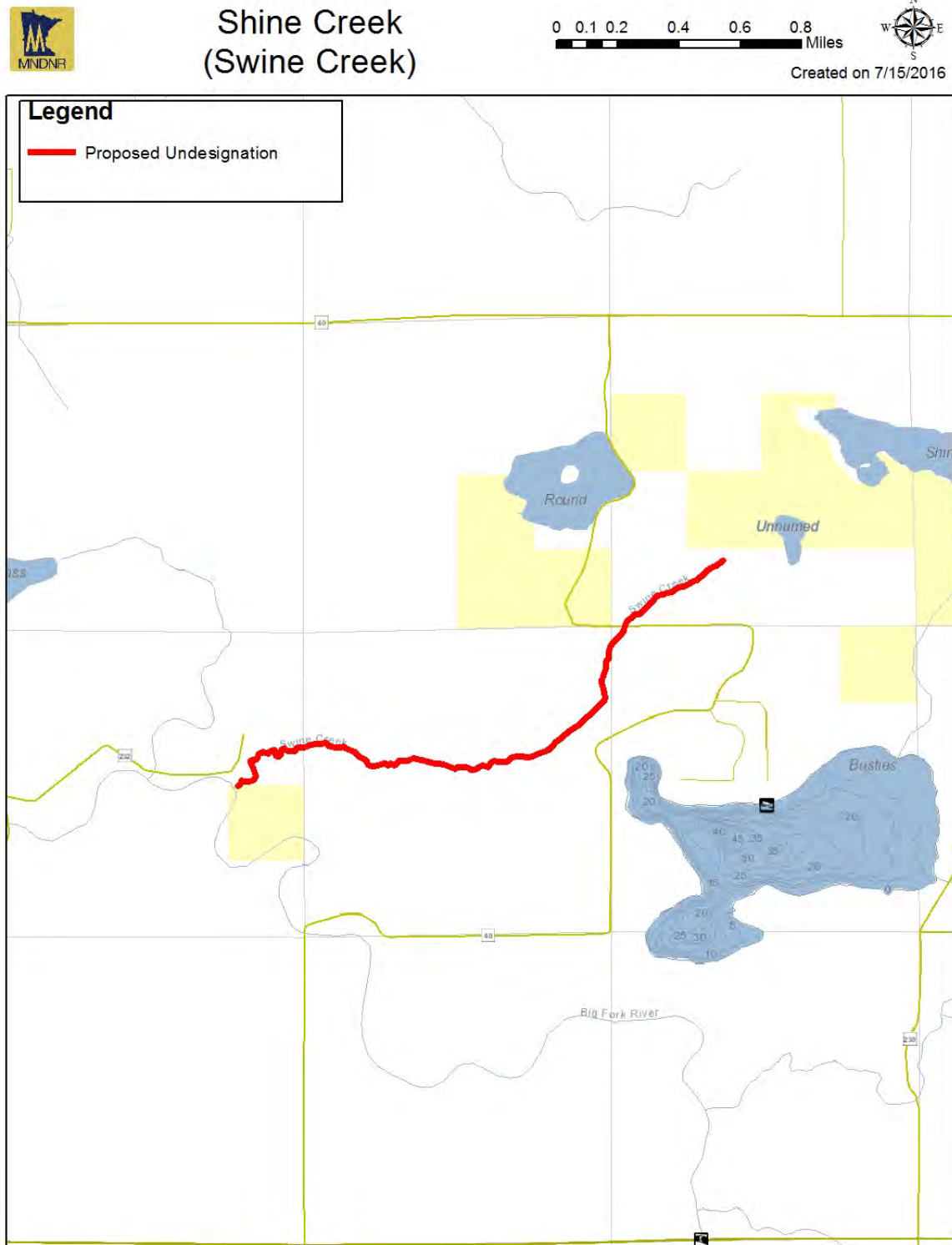
This stream was last stocked in 1977, and trout have not been documented since. Poor habitat conditions predominate.





## Shine Creek (Swine Creek)

Managed as a put-and-take fishery until 1979, stocking was ceased and trout have not been documented since. Survival and natural reproduction were poor during the period of trout management. Poor habitat conditions predominate.

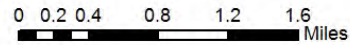




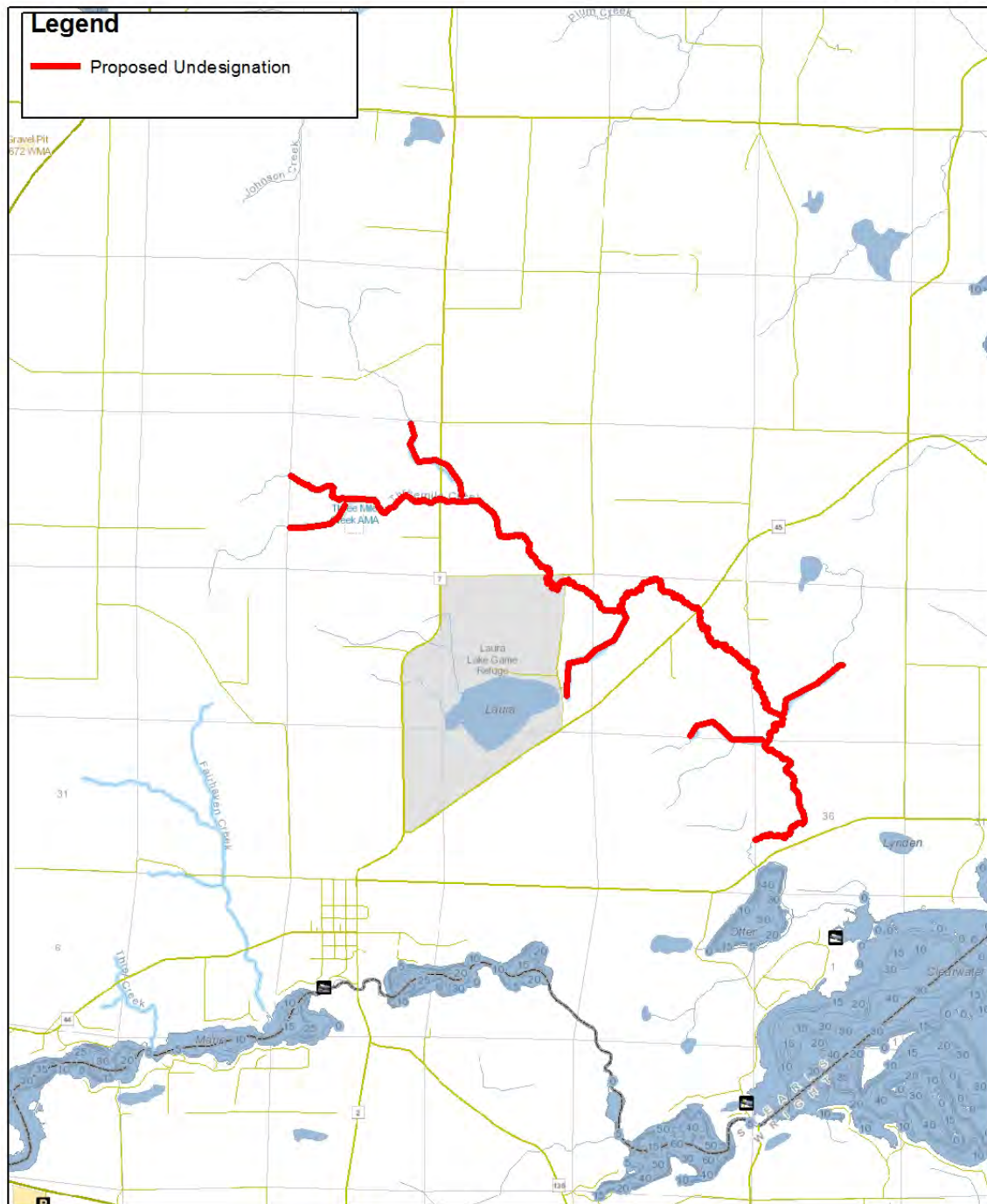
Managed as a put-and-take fishery until 1979, stocking was ceased and trout have not been documented since. Survival and natural reproduction were poor during the period of trout management. Poor habitat conditions predominate.



## Threemile Creek



Created on 7/15/2016



## Trout Brook (Itasca County)

No trout have been sampled in the two surveys since 1980. Poor habitat conditions predominate.

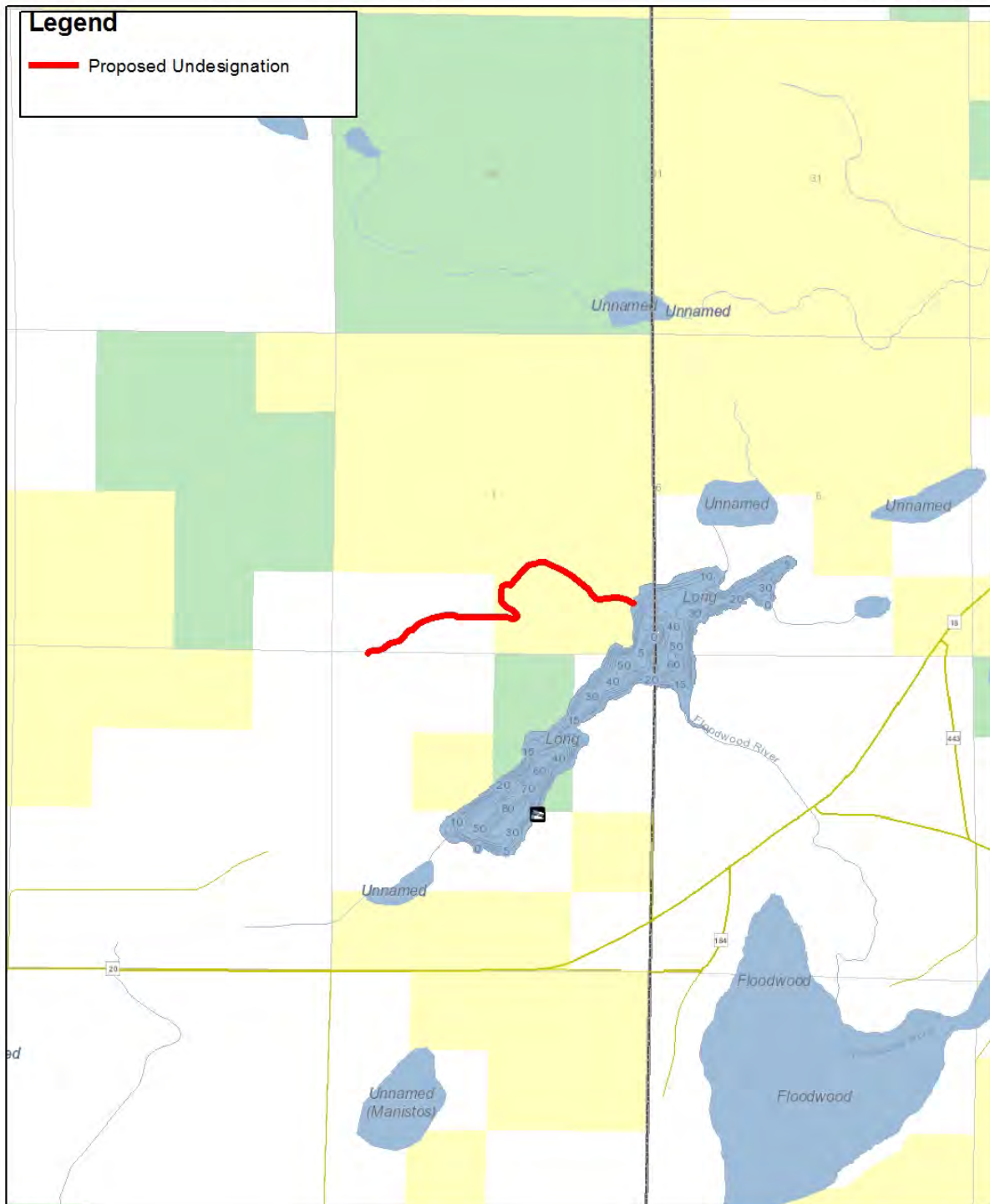


### Trout Brook (Itasca County)

0 0.1 0.2 0.4 0.6 0.8 Miles



Created on 7/15/2016



## Unnamed Stream (Cass County)

No history of trout management. Very short reach and a small stream limits its trout potential.

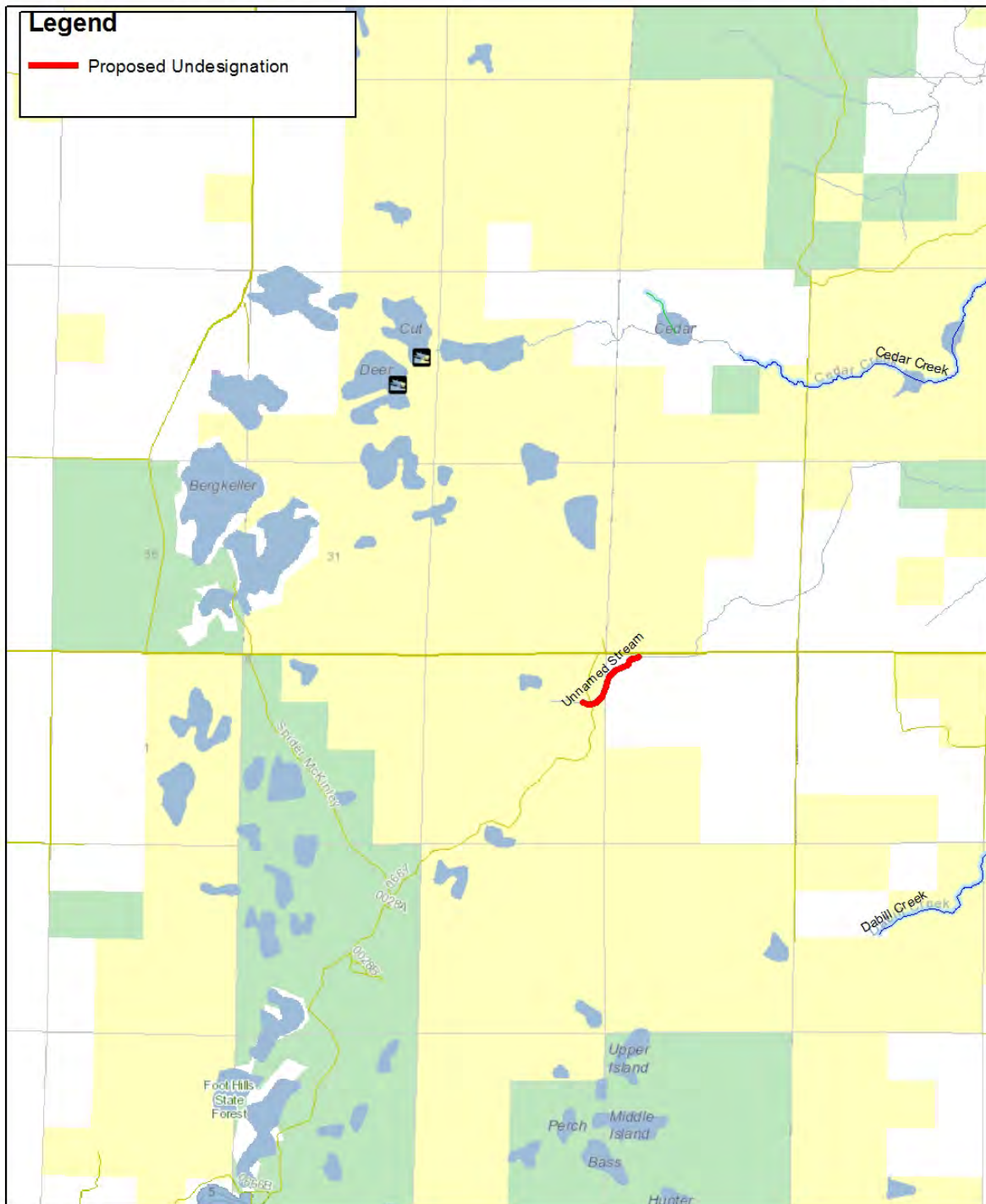


### Unnamed Stream (Cass County)

0 0.150.3 0.6 0.9 1.2 Miles



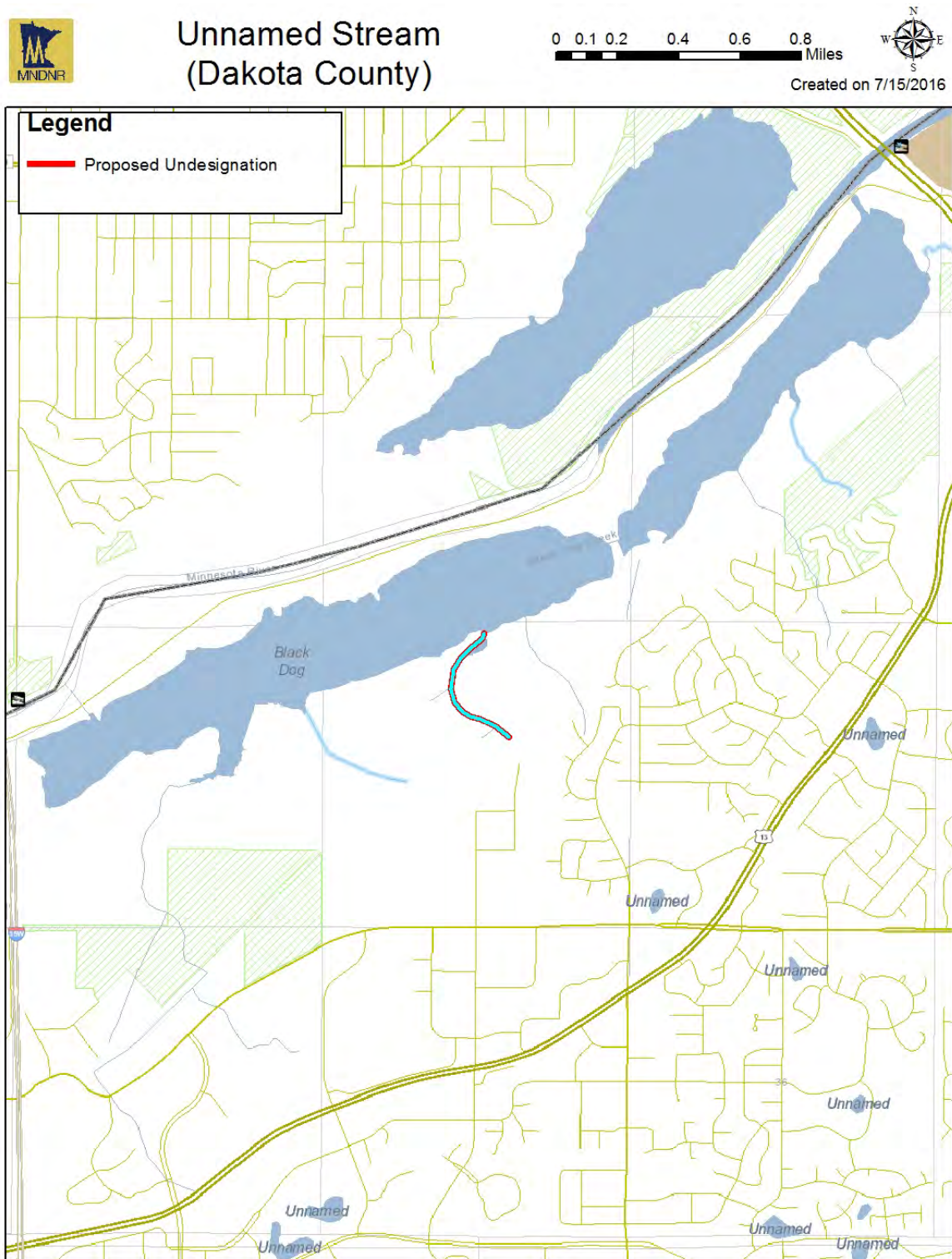
Created on 7/15/2016





## Unnamed Stream (Dakota County)

No history of trout management in this stream, and trout have not been documented. It is a small stream with warm water temperatures, indicating trout would not survive in most years.





## Van Sickle Brook

No trout have been found since trout stocking ceased in 1962. Poor habitat for trout predominates.

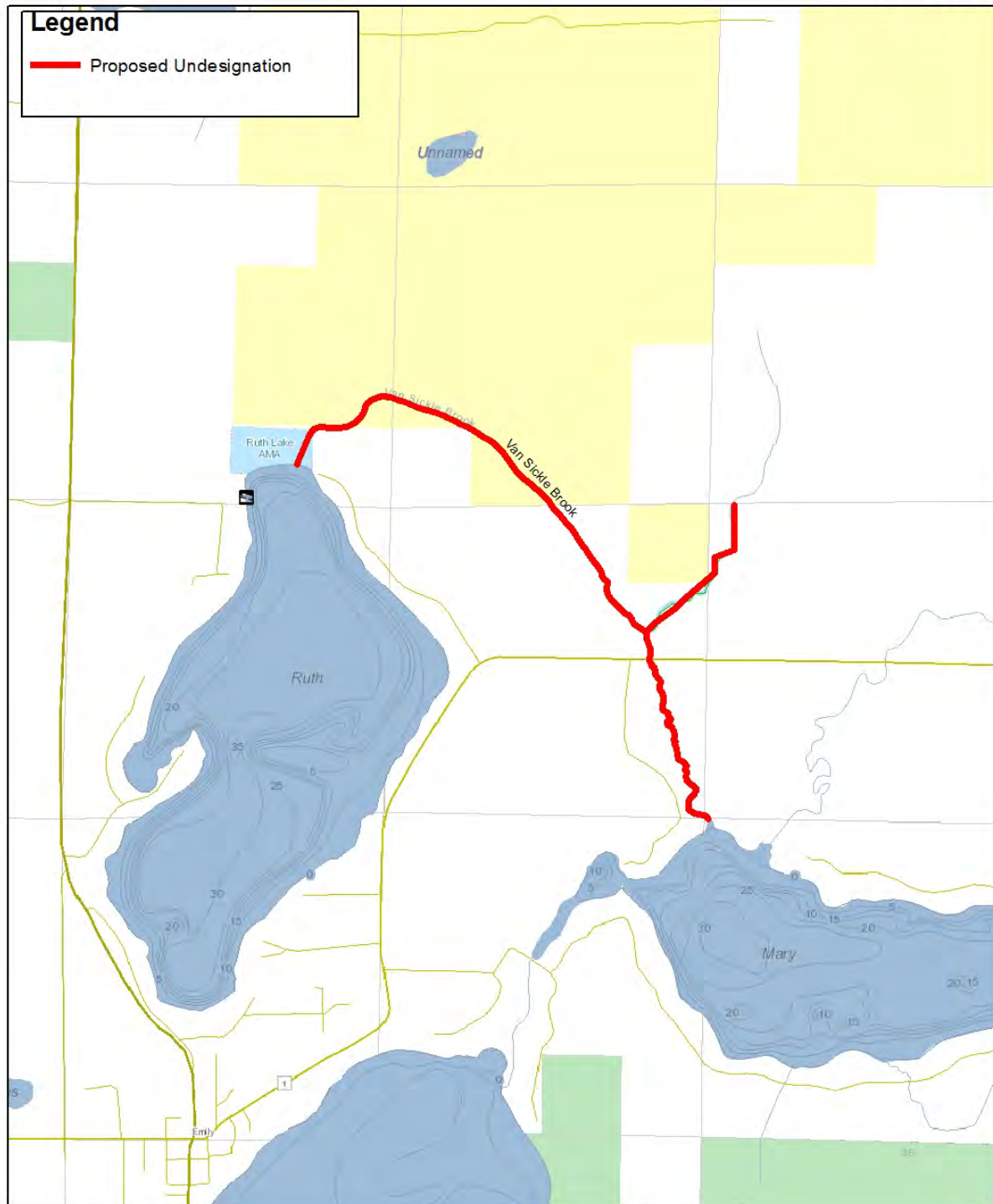


### Van Sickle Brook

0 0.1 0.2 0.4 0.6 0.8 Miles

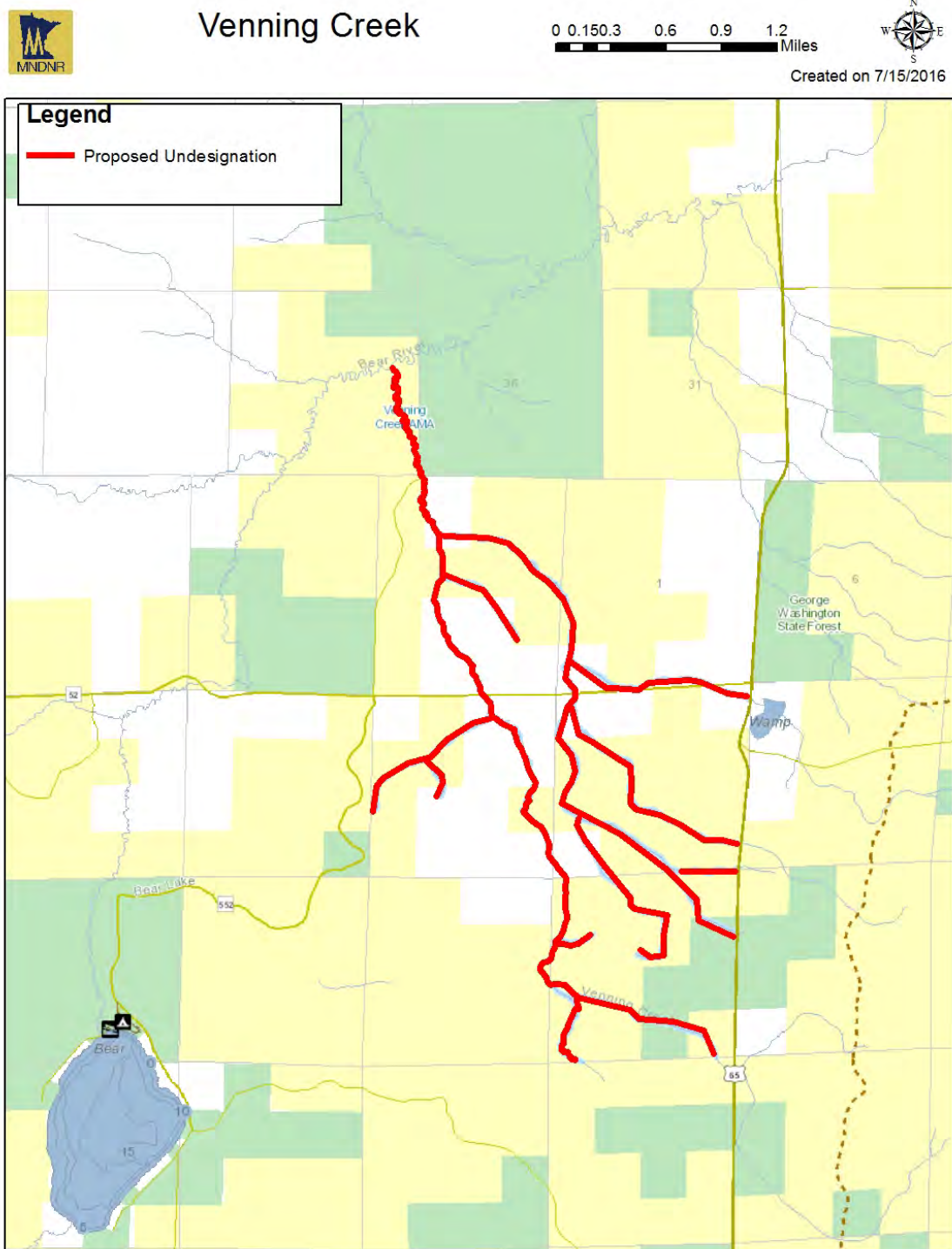


Created on 7/15/2016



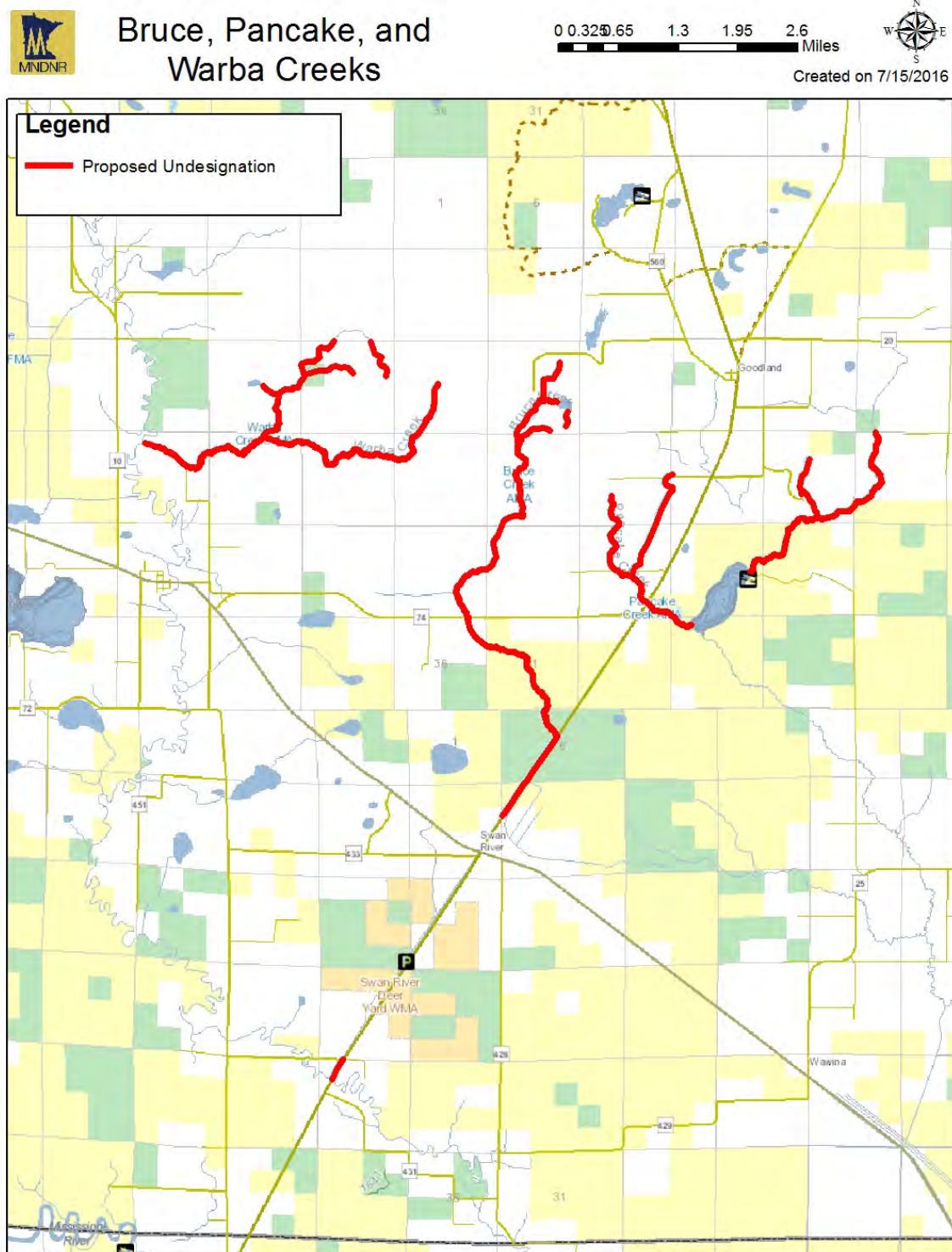
## Venning Creek

This stream was stocked with trout from 1942 to 1976, but the 1979 survey found that habitat conditions were not suitable for trout at which point stocking ceased. No trout have been documented since.



## Warba Creek

Trout were last stocked in 1971, and have not been documented since. Poor habitat conditions predominate. Descriptions for the proposals to undesignated Bruce and Pancake Creeks appear on separate pages.





## Willow Creek

Trout stocking ceased in this stream in 1970, and trout have not been documented since. Poor habitat conditions for trout predominate.



## Willow Creek

0 0.150.3 0.6 0.9 1.2 Miles



Created on 7/15/2016

