



# Snowmobile Accident Report For 2004-2005

Date of Run: 11/10/2005



## Number of Accidents

Reflects number of accidents reported.

F=Fatal, N=Non-fatal, P=Property Damage Only

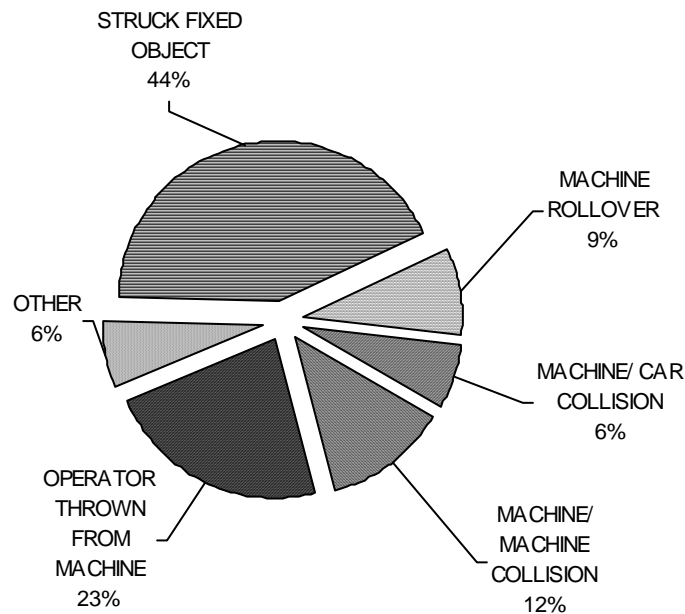
F	14
N	148
P	37
	199

## Cause of Accident

Reflects the number of people or machines involved in accidents.

Cause of Accident	Fatal	Non Fatal	Property Damage	Total
BARBED WIRE OR FENCE	1	3		4
BROKE THROUGH ICE		2	4	6
LOSS OF CONTROL		3		3
MACHINE ROLLOVER	1	15	3	19
MACHINE/ CAR COLLISION	1	4	9	14
MACHINE/ MACHINE COLLISION		11	16	27
OPERATOR THROWN FROM MACHINE	1	45	4	50
OTHER		8	6	14
PASSENGER THROWN FROM MACHINE		3	2	5
PEDESTRIAN		2	2	4
STRUCK FIXED OBJECT	11	64	18	93
STRUCK GUY WIRE OR CABLE		1		1
Totals	15	161	64	240

## Cause of Accidents



This graph only includes "Causes" with a total of more than 6.

November 10, 2005

**SNOWMOBILE FATALITIES  
2004-2005 SEASON**

<b>Number of snowmobile fatalities</b>	<b>15</b>
<b>Number of injuries reported</b>	<b>161</b>
<b>Total number of accidents reported</b>	<b>199</b>
<b>Number of machines damaged</b>	<b>172</b>

**47% Of the fatalities involved alcohol**

**45 of the operators involved in injury or property damage accidents used alcohol**

**3/17/2005, 12:15 p.m. – Cook County – Grand Marais**

69-year-old male died when the snowmobile he was operating slid and caught a ridge, causing the sled to roll over onto the operator. He died at the hospital. Snowmobile certificate – no. Alcohol involved – no.

**3/10/2005, 12:32 p.m. – Lake County – Two Harbors**

15-year-old male died when the snowmobile he was operating, after hitting a snow bank, went into a spin and caught the rear corner of the sled in front of him, was thrown from his snowmobile. Snowmobile certificate – yes. Alcohol involved – no.

**3/5/2005, 10:15 a.m. – Lake County – Two Harbors**

41-year-old male died when the snowmobile he was operating hit a tree. Snowmobile certificate – no. Alcohol involved – Will not get a final report as operator died a week later at the hospital.

**3/5/2005, 1:14 a.m. – Hubbard County – Nevis**

49-year-old male died when the snowmobile he was operating on the Heartland Alternative Trail went off a curve and struck a tree. Snowmobile certificate – no. Alcohol involved – no.

**3/3/2005, 10:40 p.m. – Lake County – Finland**

35-year-old male died when the snowmobile he was operating, at a high rate of speed, hit a row of trees and was thrown from the machine. Snowmobile certificate – no. Alcohol involved – **BAC .234.**

**2/22/2005, 12:20 a.m. – Olmsted County – Chatfield**

20-year-old male died when the snowmobile he was operating hit a tree after having driven over wooden fence posts, breaking them off. Snowmobile certificate – no. Alcohol involved – **BAC .149.**

**2/15/2005, 9:55 a.m. – Itasca County – Balsam Township**

50-year-old male operating a snowmobile northbound on State Taconite Trail died when the snowmobile he was operating struck a tree, and was thrown from the machine. The operator was the 3<sup>rd</sup> in a group of 11 snowmobilers. Snowmobile safety certificate – no. Alcohol involved – **BAC .008.**

**2/14/2005, 8:08 a.m. – Pennington County – Thief River Falls**

16-year-old male died when the snowmobile he was operating collided with a pickup, causing the operator to land under the pickup. Snowmobile safety certificate – yes. Alcohol involved – no.

**2/12/2005, 4:47 p.m. – Crow Wing County – Garrison**

31-year-old male died when he lost control of the snowmobile he was operating and was thrown from the machine, hitting a dock. Snowmobile safety certificate – yes. Alcohol involved – **BAC .162.**

**2/4/2005, 11:56 p.m. – Carlton County – Carlton**

43-year-old male operating a snowmobile died when the snowmobile he was operating collided with a pole. Snowmobile safety certificate – no. Alcohol involved – **BAC .20.**

**2/1/05, 2:15 p.m. - Cass County – Walker**

47-year-old male was thrown over his snowmobile against a tree, and the snowmobile hit operator in chest. Snowmobile safety certificate – no. Alcohol involved – no.

**1/24/2005, 5:24 p.m. – Sibley County – Gibbon**

40-year-old married couple riding on the same snowmobile southbound along the east side of a lake, went under a branch and struck a tree. Snowmobile Safety Certificate – no for both. Alcohol involved – no for both.

**1/16/2005, 2:23 a.m. – Crow Wing County – Cross Lake.**

22-year-old female operating a snowmobile was traveling on Cross Lake and missed the trail off the lake, hitting the shoreline at a steep embankment. She was traveling with her boyfriend. He went back looking for her and discovered the accident. Snowmobile safety certificate – yes. Alcohol involved – **BAC .209.**

**1/1/2005, 8:23 p.m. – Benton County – Foley.**

21-year-old male operating a snowmobile died when the snowmobile he was operating collided with a tree at the edge of a yard. The operator had been drinking and died from the impact. Snowmobile safety certificate – yes. Alcohol involved – **BAC .35.**



# Snowmobile Accident Report For 2004-2005

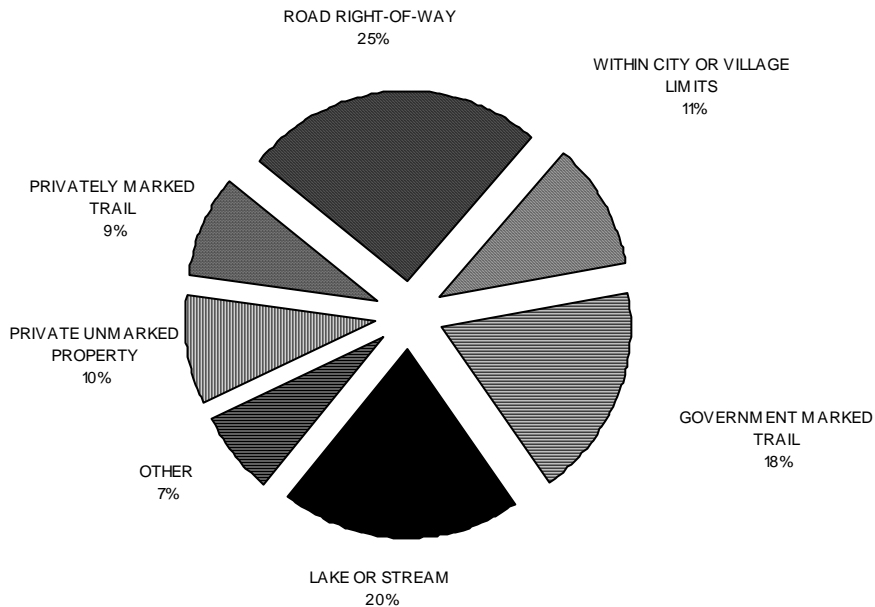
Date of Run: 11/10/2005



**Where accident happened:** Reflects the number of people or machines involved in accidents.

	Fatal	Non Fatal	Property damage	Totals
GOVERNMENT MARKED TRAIL	4	31	7	42
GOVERNMENT UNMARKED PROPERTY		1		1
LAKE OR STREAM	4	28	15	47
OTHER	1	10	5	16
OUTSIDE CITY OR VILLAGE LIMITS		2		2
PRIVATE UNMARKED PROPERTY	1	16	5	22
PRIVATELY MARKED TRAIL	3	15	2	20
RAILROAD RIGHT-OF-WAY		2	4	6
ROAD RIGHT-OF-WAY	1	40	18	59
WITHIN CITY OR VILLAGE LIMITS	1	16	8	25
<b>Totals</b>	<b>15</b>	<b>161</b>	<b>64</b>	<b>240</b>

## Terrain of Accidents



This graph shows only "Terrain" with totals of more than 6.



# Snowmobile Accident Report For 2004-2005

Date of Run: 11/10/2005



## Alcohol Usage by Operator

Y =yes, N=no

U= unknown	Male	Female	Total
N	138	36	174
U	6	1	7
Y	40	5	45
Total	184	42	226

## Alcohol Usage by Operators in Fatal Accidents

Y =yes, N=no

U= unknown	Male	Female	Total
N	8	2	10
Y	4	1	5
Total	12	3	15

## Sex and Casualty

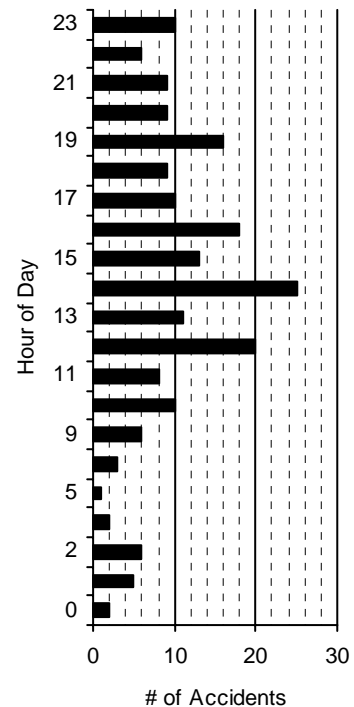
Sex	Fatal	Non Fatal	Property Damage	Total
F	2	33	12	47
M	13	128	52	193
Total	15	161	64	240

## Time of Day

Reflects number of accidents.

Hour	Fatal	Non Fatal	Property Damage	Total
0	1	1		2
1	1	3	1	5
2	1	4	1	6
3		2		2
5		1		1
8	1	2		3
9	1	3	2	6
10	1	8	1	10
11		5	3	8
12	2	13	5	20
13		9	2	11
14	1	23	1	25
15		9	4	13
16	1	14	3	18
17	1	7	2	10
18		5	4	9
19		13	3	16
20	1	6	2	9
21		8	1	9
22	1	4	1	6
23	1	8	1	10

## Time of Day of Accidents





# Snowmobile Accident Report For 2004-2005

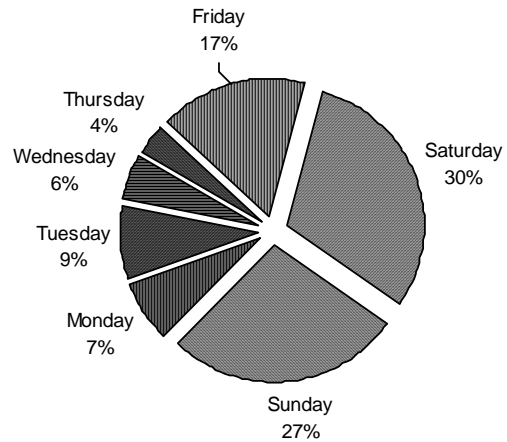
Date of Run: 11/10/2005



## Day of Week the Accidents Happened

	FATAL	NON FATAL	PROPERTY DAMAGE	TOTAL
Sunday	1	47	7	55
Monday	2	7	5	14
Tuesday	3	9	5	17
Wednesday		10	1	11
Thursday	3	4		7
Friday	1	26	7	34
Saturday	4	45	12	61
<b>TOTALS</b>	<b>14</b>	<b>148</b>	<b>37</b>	<b>199</b>

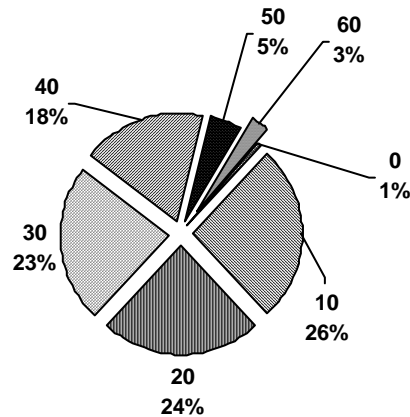
## Day of Week Accidents Occurred



## Operators by Age Group and Sex

AGE GROUP	MALE	FEMALE	TOTAL
0		2	2
10	46	13	59
20	45	9	54
30	48	5	53
40	32	9	41
50	7	4	11
60	6		6
<b>TOTAL</b>	<b>184</b>	<b>42</b>	<b>226</b>

## Age of Operators



## Safety Training of Operator

Sex	Yes	No	Unknown	Total
F	12	30		42
M	84	100		184
<b>Total</b>	<b>96</b>	<b>130</b>		<b>226</b>