

**SNOWMOBILE FATALITIES**  
2001-2002 SEASON

<b>Number of snowmobile fatalities</b>	<b>17</b>
<b>Number of injuries reported</b>	<b>222</b>
<b>Number of machines damaged</b>	<b>40</b>
<b>Total number of accidents reported</b>	<b>259</b>

**58.8% of fatal accidents involved alcohol or drugs**

**24.5% of operators involved in injury or property damage accidents used alcohol**

\* 12/15/01, 12:02 p.m. - Sherburne County – Zimmerman.  
18 year old male operating a snowmobile on Lake Fremont broke through the ice. The operator’s head struck either the ice or the machine, and the operator drowned. Snowmobile safety certificate - yes. Alcohol involved – no.

12/23/01, 8 p.m. – St. Louis County – Ely.  
24 year old male operating a snowmobile died after the snowmobile he was on left a trail. The snowmobile was traveling alone on a State Forest road when the snowmobile missed a turn. The operator was thrown from the machine. The operator was found the next day. Snowmobile safety certificate - yes. Alcohol involved – **BAC - .11** (BAC at time of autopsy was .07, coroner estimates BAC at time of death to be .11)

12/26/01, 6:00 p.m. – Mille Lacs County – Milaca.  
11 year old male operating a snowmobile struck a cable. The snowmobile had crossed a roadway and was traveling in the ditch of the road right of way. The snowmobile turned into a private driveway and was struck in the neck by a cable strung across the driveway. The operator was dead at the scene. Snowmobile safety certificate – no. Alcohol involved – no.

12/28/01, 1:22 p.m. - Sherburne County – Big Lake.  
30 year old male operating was thrown from a snowmobile traveling on a city street. The snowmobile went into a field at the end of the block and struck a frozen mound of dirt. The operator was found approximately 20 feet from the dirt mound, and the snowmobile was found 25 feet from the location of the operator. Snowmobile safety certificate – no. Alcohol involved – **BAC - 32.**

Snowmobile fatalities 2001-02 (continued)

\* 1/1/02, 5:46 p.m.– Mille Lacs County – Isle.

80 year old male drown when the snowmobile he was on went through the ice. The snowmobile was being operated by 45 year old male on Mille Lacs Lake. The snowmobile broke through thin ice, the operator was able to get back on the ice and was assisted by nearby fisherman. The passenger was unable to get out of the water and drown. Snowmobile safety certificate - yes. Alcohol involved – operator – not taken.

1/1/02, 6:17 p.m.- Washington County – Stillwater.

16 year old male operating a snowmobile struck a tree. The snowmobile was traveling on a township road. The snowmobile approached a “T” intersection of a county road. The snowmobile vaulted over the county road and struck a tree within the road right of way. The operator was wearing a helmet, but died as a result of head injuries. Snowmobile safety certificate – no. Alcohol involved – no.

1/12/02, 9:17 p.m. – Cook County – Grand Marais.

30 year old male passenger fell off a snowmobile. The snowmobile was being operated on Lake Musquash by a 33 year old male. The snowmobile was traveling on the lake and missed a turn for a trail. The snowmobile’s brakes locked and the passenger was ejected and hit his head on a rock. The passenger died as a result of head injuries. The operator was wearing a helmet, the passenger was carrying his helmet in his lap. Snowmobile safety certificate – no. Alcohol involved – operator – **BAC - .06**; passenger – **BAC - .107**.

1/13/02, 9:55 p.m. – Wright County – Otsego.

17 year old male operating a snowmobile struck a tree. The snowmobile was traveling on private property, the snowmobile sideswiped a tree, causing both the operator and passenger to be thrown from the machine. The operator died shortly after the accident, the passenger received serious injuries. Snowmobile safety certificate – no. Alcohol involved – no.

1/17/02, 6:47 p.m. – Chisago County – Chisago City.

2 year old male pedestrian was struck by a snowmobile. The snowmobile was being operated by a 17 year old male in a city park. The snowmobile accelerated over a small mound near the bottom of a sliding hill. The snowmobile struck the pedestrian in the forehead. The pedestrian died from head injuries sustained in the accident. Snowmobile safety certificate – yes. Alcohol involved – **BAC - .03**, also under the influence of **marijuana**.

1/26/02, 3:15 p.m. – Lake of the Woods – Zippel Bay.

34 year old male was thrown from the snowmobile he was operating. The snowmobile was traveling on Lake of the Woods when it struck a clear patch of ice and the operator lost control. The operator and a 6 year old passenger were thrown from the snowmobile. The operator died the following day from injuries sustained in the accident, the passenger was not injured. Snowmobile safety certificate – no. Alcohol involved – **BAC - .16**.

2/2/2002, 1:00 p.m. – Olmsted County – Haverhill Township.

31 year old male operating a snowmobile struck a barbed wire fence. The snowmobile was traveling in the ditch when it struck a tree. The operator was thrown from the snowmobile into a barbed wire fence. The operator died at the scene. Snowmobile safety certificate - no. Alcohol involved – no.

2/2/2002, 11:45 p.m. – Polk County – East Grand Forks.

29 year old male operating a snowmobile on the Red Lake River hit a deadfall tree near the riverbank. Snowmobile safety certificate – no. Alcohol involved – **BAC - .16**.

3/6/2002, unknown p.m. – Ottertail County – Bertha.

36 year old male operating a snowmobile struck a tree. The snowmobile was traveling on private property at a high rate of speed when it struck a tree. The operator was discovered the next day. Snowmobile safety certificate – yes. Alcohol involved – **BAC - .15**.

3/8/2002, 5:52 p.m. – Beltrami County – Solway.

49 year old male operating a snowmobile on a trail struck a tree. The snowmobile traveled over two successive deep depressions in the trail. The snowmobile became airborne and both the operator and the machine struck a tree. The operator was wearing a helmet, which received serious damage, and the operator was declared dead at the scene. Snowmobile safety certificate – no. Alcohol involved – **BAC - .11**.

3/9/2002, 3:21 a.m. – Marshall County – Spruce Valley Township.

46 year old male operating a snowmobile struck a culvert. The snowmobile was traveling along a county road and struck a concrete culvert. The operator was thrown from the machine and his helmet struck a metal fence post. The operator was dead at the scene. Snowmobile safety certificate – no. Alcohol involved – **BAC - .16**.

3/9/2002, 3:00 p.m. – Isanti County – Cambridge.

45 year old male operating a snowmobile was struck by an oncoming snowmobile. The snowmobile was operating southbound on a government marked trail. The snowmobile traveled down into a gully, and was struck by a snowmobile traveling northbound on the trail. The northbound snowmobile struck the operator in the chest and head. A second northbound snowmobile was unable to stop in time to avoid collision with the southbound snowmobile. The operator of the southbound snowmobile was dead at the scene. Snowmobile safety certificate – southbound operator – yes; northbound operator # 1 – no; northbound operator #2 – no. Alcohol involved – no.

3/16/2002, 3:10 p.m. - Todd County – Bruce Township.

58 year old male operating a snowmobile collided with a pickup truck. The snowmobile crossed the road in front of an oncoming truck. The operator of the truck attempted to avoid the collision, but struck the rear of the snowmobile. The operator of the snowmobile was thrown from the machine. Snowmobile safety certificate – no. Alcohol involved – snowmobile operator – **BAC - .10**; truck operator – **BAC - .09**.

\*Denotes water related fatality.



# Minnesota Department of Natural Resources

500 Lafayette Road  
St. Paul, Minnesota 55155-4000

July 9, 2002

## SNOWMOBILE FATALITIES 2001-2002 SEASON

<b>Number of snowmobile fatalities</b>	<b>17</b>
<b>Number of injuries reported</b>	<b>222</b>
<b>Number of machines damaged</b>	<b>40</b>
<b>Total number of accidents reported</b>	<b>259</b>

**58.8% of fatal accidents involved alcohol or drugs**

**24.5% of operators involved in injury or property damage accidents used alcohol**

\* 12/15/01, 12:02 p.m. - Sherburne County – Zimmerman.

18 year old male operating a snowmobile on Lake Fremont broke through the ice. The operator's head struck either the ice or the machine, and the operator drowned. Snowmobile safety certificate - yes. Alcohol involved - no.

12/23/01, 8 p.m. – St. Louis County – Ely.

24 year old male operating a snowmobile died after the snowmobile he was on left a trail. The snowmobile was traveling alone on a State Forest road when the snowmobile missed a turn. The operator was thrown from the machine. The operator was found the next day. Snowmobile safety certificate - yes. Alcohol involved – **BAC - .11** (BAC at time of autopsy was .07, coroner estimates BAC at time of death to be .11)

12/26/01, 6:00 p.m. – Mille Lacs County – Milaca.

11 year old male operating a snowmobile struck a cable. The snowmobile had crossed a roadway and was traveling in the ditch of the road right of way. The snowmobile turned into a private driveway and was struck in the neck by a cable strung across the driveway. The operator was dead at the scene. Snowmobile safety certificate – no. Alcohol involved – no.

12/28/01, 1:22 p.m. - Sherburne County – Big Lake.

30 year old male operating was thrown from a snowmobile traveling on a city street. The snowmobile went into a field at the end of the block and struck a frozen mound of dirt. The operator was found approximately 20 feet from the dirt mound, and the snowmobile was found 25 feet from the location of the operator. Snowmobile safety certificate – no. Alcohol involved – **BAC - .32**.

DNR Information: 651-296-6157 • 1-888-646-6367 • TTY: 651-296-5484 • 1-800-657-3929

An Equal Opportunity Employer  
Who Values Diversity



Printed on Recycled Paper Containing a  
Minimum of 10% Post-Consumer Waste

Snowmobile fatalities 2001-02 (continued)

\* 1/1/02, 5:46 p.m.– Mille Lacs County – Isle.

80 year old male drown when the snowmobile he was on went through the ice. The snowmobile was being operated by 45 year old male on Mille Lacs Lake. The snowmobile broke through thin ice, the operator was able to get back on the ice and was assisted by nearby fisherman. The passenger was unable to get out of the water and drown. Snowmobile safety certificate - yes. Alcohol involved – operator – not taken.

1/1/02, 6:17 p.m.- Washington County – Stillwater.

16 year old male operating a snowmobile struck a tree. The snowmobile was traveling on a township road. The snowmobile approached a “T” intersection of a county road. The snowmobile vaulted over the county road and struck a tree within the road right of way. The operator was wearing a helmet, but died as a result of head injuries. Snowmobile safety certificate – no. Alcohol involved – no.

1/12/02, 9:17 p.m. – Cook County – Grand Marais.

30 year old male passenger fell off a snowmobile. The snowmobile was being operated on Lake Musquash by a 33 year old male. The snowmobile was traveling on the lake and missed a turn for a trail. The snowmobile’s brakes locked and the passenger was ejected and hit his head on a rock. The passenger died as a result of head injuries. The operator was wearing a helmet, the passenger was carrying his helmet in his lap. Snowmobile safety certificate – no. Alcohol involved – operator – **BAC - .06**; passenger – **BAC - .107**.

1/13/02, 9:55 p.m. – Wright County – Otsego.

17 year old male operating a snowmobile struck a tree. The snowmobile was traveling on private property, the snowmobile sideswiped a tree, causing both the operator and passenger to be thrown from the machine. The operator died shortly after the accident, the passenger received serious injuries. Snowmobile safety certificate – no. Alcohol involved – no.

1/17/02, 6:47 p.m. – Chisago County – Chisago City.

2 year old male pedestrian was struck by a snowmobile. The snowmobile was being operated by a 17 year old male in a city park. The snowmobile accelerated over a small mound near the bottom of a sliding hill. The snowmobile struck the pedestrian in the forehead. The pedestrian died from head injuries sustained in the accident. Snowmobile safety certificate – yes. Alcohol involved – **BAC - .03**, also under the influence of **marijuana**.

1/26/02, 3:15 p.m. – Lake of the Woods – Zippel Bay.

34 year old male was thrown from the snowmobile he was operating. The snowmobile was traveling on Lake of the Woods when it struck a clear patch of ice and the operator lost control. The operator and a 6 year old passenger were thrown from the snowmobile. The operator died the following day from injuries sustained in the accident, the passenger was not injured. Snowmobile safety certificate – no. Alcohol involved – **BAC - .16**.

Snowmobile fatalities 2001-02 (continued)

2/2/2002, 1:00 p.m. – Olmsted County – Haverhill Township.

31 year old male operating a snowmobile struck a barbed wire fence. The snowmobile was traveling in the ditch when it struck a tree. The operator was thrown from the snowmobile into a barbed wire fence. The operator died at the scene. Snowmobile safety certificate - no. Alcohol involved – no.

2/2/2002, 11:45 p.m. – Polk County – East Grand Forks.

29 year old male operating a snowmobile on the Red Lake River hit a deadfall tree near the riverbank. Snowmobile safety certificate – no. Alcohol involved – **BAC - .16**.

3/6/2002, unknown p.m. – Ottertail County – Bertha.

36 year old male operating a snowmobile struck a tree. The snowmobile was traveling on private property at a high rate of speed when it struck a tree. The operator was discovered the next day. Snowmobile safety certificate – yes. Alcohol involved – **BAC - .15**.

3/8/2002, 5:52 p.m. – Beltrami County – Solway.

49 year old male operating a snowmobile on a trail struck a tree. The snowmobile traveled over two successive deep depressions in the trail. The snowmobile became airborne and both the operator and the machine struck a tree. The operator was wearing a helmet, which received serious damage, and the operator was declared dead at the scene. Snowmobile safety certificate – no. Alcohol involved – **BAC - .11**.

3/9/2002, 3:21 a.m. – Marshall County – Spruce Valley Township.

46 year old male operating a snowmobile struck a culvert. The snowmobile was traveling along a county road and struck a concrete culvert. The operator was thrown from the machine and his helmet struck a metal fence post. The operator was dead at the scene. Snowmobile safety certificate – no. Alcohol involved – **BAC - .16**.

3/9/2002, 3:00 p.m. – Isanti County – Cambridge.

45 year old male operating a snowmobile was struck by an oncoming snowmobile. The snowmobile was operating southbound on a government marked trail. The snowmobile traveled down into a gully, and was struck by a snowmobile traveling northbound on the trail. The northbound snowmobile struck the operator in the chest and head. A second northbound snowmobile was unable to stop in time to avoid collision with the southbound snowmobile. The operator of the southbound snowmobile was dead at the scene. Snowmobile safety certificate – southbound operator – yes; northbound operator # 1 – no; northbound operator #2 – no. Alcohol involved – no.

3/16/2002, 3:10 p.m. - Todd County – Bruce Township.

58 year old male operating a snowmobile collided with a pickup truck. The snowmobile crossed the road in front of an oncoming truck. The operator of the truck attempted to avoid the collision, but struck the rear of the snowmobile. The operator of the snowmobile was thrown from the machine. Snowmobile safety certificate – no. Alcohol involved – snowmobile operator – **BAC - .10**; truck operator – **BAC - .09**.

cc: COL Bernhjelm  
MAJ Spence  
MAJ Letourneau  
MAJ Schwartz  
MAJ Everett  
Dennis Asmussen  
\*Denotes water related fatality.



# Snowmobile Accident Report For 2001-2002

Date of Run: 7/9/2002



## Number of Accidents

Reflects number of accidents reported.

F=Fatal, N=Non-fatal, P=Property Damage Only

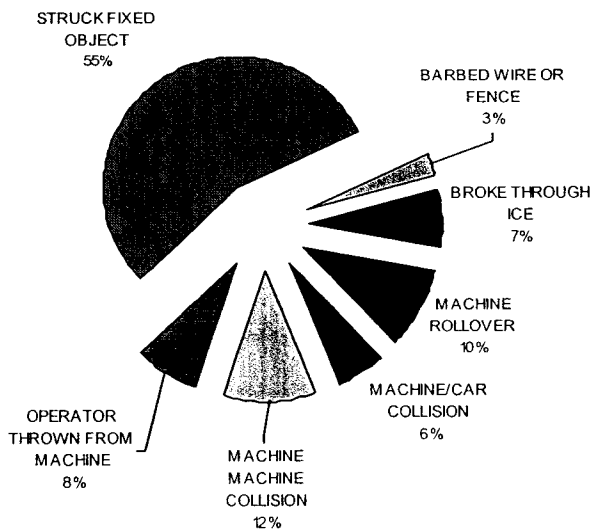
F	17
N	203
P	39
	259

## Cause of Accident

Reflects the number of people or machines involved in accidents.

Cause of Accident	Fatal	Non Property		Total
		Fatal	Damage	
BARBED WIRE OR FENCE	1	3	3	7
BROKE THROUGH ICE	2	7	10	19
COLLISION WITH TRAIN			1	1
EQUIPMENT MALFUNCTION		2		2
LOSS OF CONTROL		1		1
MACHINE ROLLOVER	1	25	1	27
MACHINE/CAR COLLISION	1	12	2	15
MACHINE/MACHINE COLLISION	1	27	2	30
OPERATOR INJURED IN MECHANISM OF MACHINE		1		1
OPERATOR THROWN FROM MACHINE		21		21
OTHER		2		2
PASSENGER THROWN FROM MACHINE		3		3
PASSENGER THROWN FROM OBJECT TOWED BY MACHINE		1		1
PEDESTRIAN	1			1
STRUCK FIXED OBJECT	9	115	21	145
STRUCK GUY WIRE OR CABLE	1	2		3
<b>Totals</b>	<b>17</b>	<b>222</b>	<b>40</b>	<b>279</b>

## Cause of Accidents



This graph only includes "Causes" with a total of more than 6.



# Snowmobile Accident Report For 2001-2002

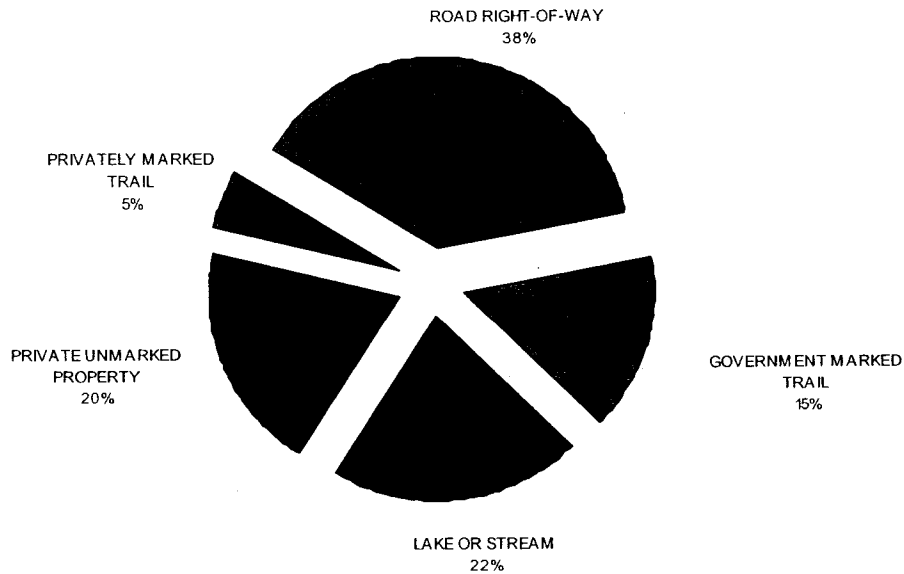
Date of Run: 7/9/2002



**Where accident happened:** Reflects the number of people or machines involved in accidents.

	Fatal	Non Fatal	Property damage	Totals
GOVERNMENT MARKED TRAIL	2	36	2	40
GOVERNMENT UNMARKED PROPERTY	1	3	1	5
LAKE OR STREAM	5	39	13	57
OTHER		1		1
OUTSIDE CITY OR VILLAGE LIMITS		1		1
PRIVATE UNMARKED PROPERTY	4	44	4	52
PRIVATELY MARKED TRAIL		12	1	13
RAILROAD RIGHT-OF-WAY		5	1	6
ROAD RIGHT-OF-WAY	5	79	18	102
WITHIN CITY OR VILLAGE LIMITS		2		2
<b>Totals</b>	<b>17</b>	<b>222</b>	<b>40</b>	<b>279</b>

## Terrain of Accidents



This graph shows only "Terrain" with totals of more than 6.





# Snowmobile Accident Report For 2001-2002

Date of Run: 7/9/2002



## Alcohol Usage by Operator

Y =yes, N=no  
U= unknown

	Male	Female	Unknown	Total
N	184	24		208
U	8	1	1	10
Y	63	6		69
	255	31	1	287

## Alcohol Usage by Operators in Fatal Accidents

Y =yes, N=no  
U= unknown

	Male	Female	Total
N	9		9
Y	10		10

## Sex and Casualty

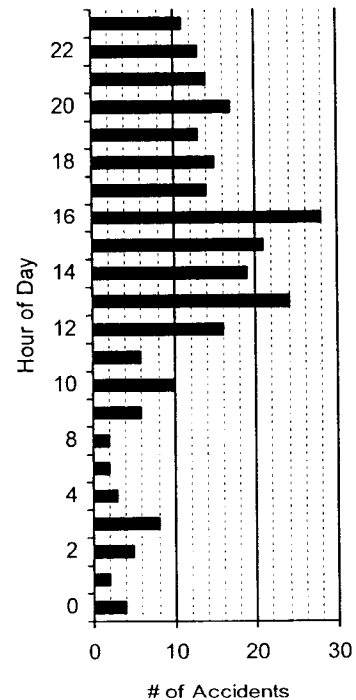
Sex	Fatal	Non Fatal	Property Damage	Total
F		28	6	34
M	17	194	34	245
	17	222	40	279

## Time of Day

Reflects number of accidents.

Hour	Fatal	Non Fatal	Property Damage	Total
		5	1	6
0		4		4
1		2		2
2		5		5
3	1	7		8
4		2	1	3
6		2		2
8		1	1	2
9		5	1	6
10		7	3	10
11		6		6
12	2	11	3	16
13	1	20	3	24
14		15	4	19
15	3	16	2	21
16		24	4	28
17	2	9	3	14
18	3	10	2	15
19		10	3	13
20	2	13	2	17
21	2	11	1	14
22		10	3	13
23	1	8	2	11

## Time of Day of Accidents





# Snowmobile Accident Report For 2001-2002

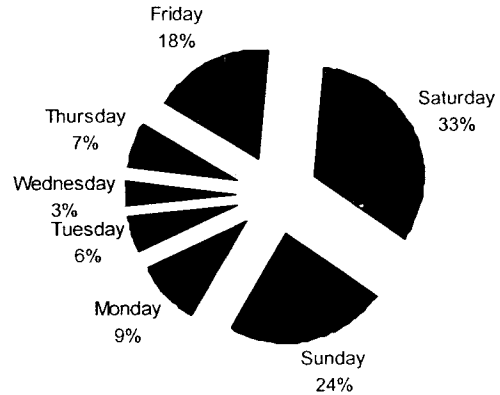
Date of Run: 7/9/2002



## Day of Week the Accidents Happened

	FATAL	NON FATAL	PROPERTY DAMAGE	TOTAL
Sunday	2	51	9	62
Monday		22	2	24
Tuesday	2	10	3	15
Wednesday	2	4	3	9
Thursday	1	14	2	17
Friday	2	34	10	46
Saturday	8	68	10	86
	17	203	39	259

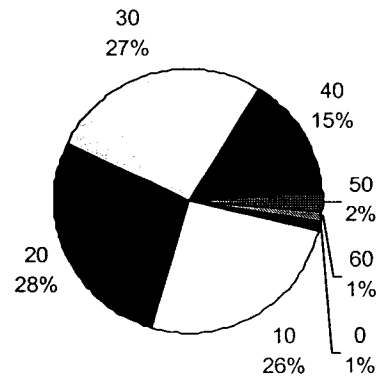
## Day of Week Accidents Occurred



## Operators by Age Group and Sex

AGE GROUP	MALE	FEMALE	TOTAL
0	3		3
10	67	6	73
20	75	5	80
30	65	11	76
40	37	7	44
50	5	1	6
60	3	1	4
	255	31	286

## Age Groups of Operators



## Safety Training of Operator

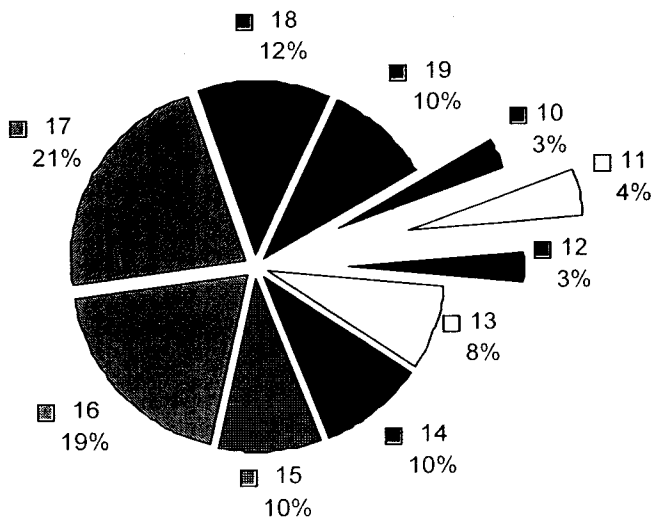
Sex	Yes	No	Unknown	Total
F	9	22		31
M	91	162	2	255
U			1	1
	100	184	3	287



# Snowmobile Accident Report For 2001-2002

Date of Run: 7/9/2002

## Frequency of accidents within 10 - 19 Year Old Snowmobilers



## Frequency of Accidents Within the 20 - 29 Year Old Snowmobilers

