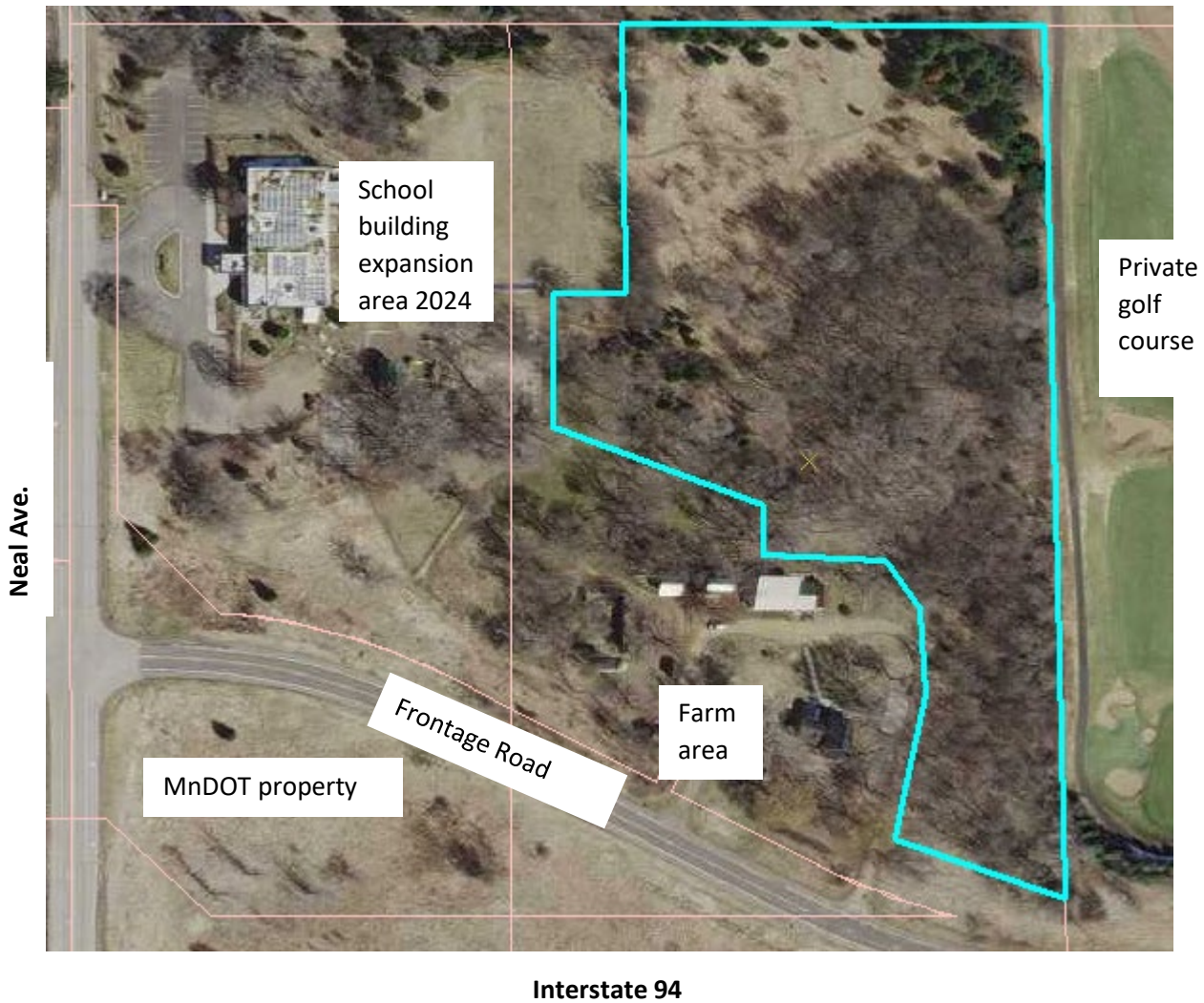


**St. Croix Montessori School Forest Description:**

Section 1 –(6.20 acres) - Starting at the NE corner of the eastern school-owned parcel located in the SW1/4 SW1/4 of Section 32, Township 29, Range 20W, proceed west along the parcel line 420 ft, then south 268 ft, then west 72 ft, then south 131 ft, then east 111 degrees south 223 ft, then south 48 ft, then east 120 ft, then south 146 degrees east 60 ft, then south 233 ft following the eastern boundary of the driveway, then east 109 degrees south 177 ft, then north 868 ft back to the point of beginning.

Blue outlined polygon denotes the boundaries of the school forest property on map below.



Written by Madisson Masucci, 1/9/2024

Reviewed by Laura Duffey 1/9/2024