

Instructions for participants

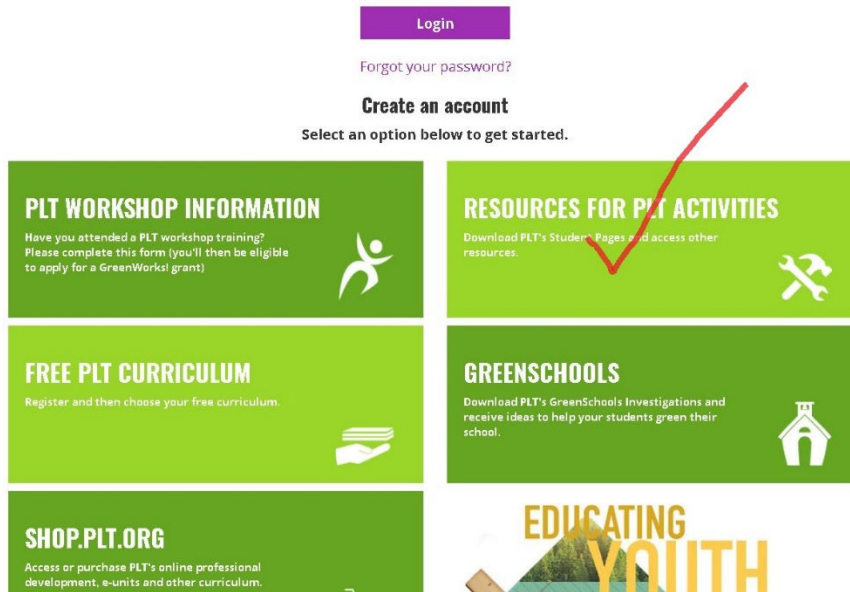
Creating a PLT Login

Entering Workshop Participation Information

Note: Creating a PLT login is optional. Creating a login requires you to share personal demographic information with the National PLT office. Those with PLT accounts:

- Access to PLT resources, free curriculum, and GreenSchools investigations.
- You also will be put on a mailing list to receive the PLT Branch newsletter (you can opt out of this later).

1. Go to www.plt.org/login, then scroll down and click on any of the green rectangles.



2. Type your email address.

Every month we carefully select new tools and resources, including interactive websites, games, careers information, and books.

Register to access all, including the Student Pages (in

Email:*

over

3. Enter your demographic information

Email:*

First Name:*

Last Name:*

What is your current position (check all that apply)?*

- Elementary school teacher
- Middle school teacher
- High school teacher
- School administrator
- Early childhood educator
- Home school educator

4. Access your dashboard

Enter Your Workshop Participation Information

Access or Purchase an Online Training or Curriculum from shop.PLT.org

Access Free PLT Curriculum

Access Resources for PLT Lessons

Access PLT's GreenSchools Investigations and Other Resources

ACCOUNT HOME

Welcome: Laura Duffey

[Change Password](#)

Your Email Preferences

- The Branch** (Monthly e-newsletter. Environmental education lesson plans from educators.)
- GreenSchools Update** (Occasional e-newsletter. Tips and activities for students in greening their school.)

CONTACT INFORMATION

DEMOGRAPHIC INFORMATION

WORKSHOP PARTICIPATION

5. Select “Enter Your Workshop Participation Information” (first dark green box)

NOTE: The online survey asks you to enter your workshop’s date, city, and type.

Please fill out a separate evaluation form from your facilitator at the end of the workshop.