



Ash

Where in the forest do **ash** live?

What animals eat **ash**?

What other animals and plants live in the forest with **ash**?

In what ways do **ash** depend on these other animals and plants?

How do **ash** influence their environment?

Back of ash card



Grub

Where in the forest do **grubs** live?

What do **grubs** eat? (*Are **grubs** herbivores, carnivores, or omnivores?*)

What animals prey on **grubs**?

What other animals and plants live in the forest with **grubs**?

In what ways do **grubs** depend on these other animals and plants?

How do **grubs** influence their environment?

Are **grubs** producers, consumers, or decomposers?

[Back of Grub card](#)



Spider

Where in the forest do **spiders** live?

What do **spiders** eat? (*Are spiders herbivores, carnivores, or omnivores?*)

What animals prey on **spiders**?

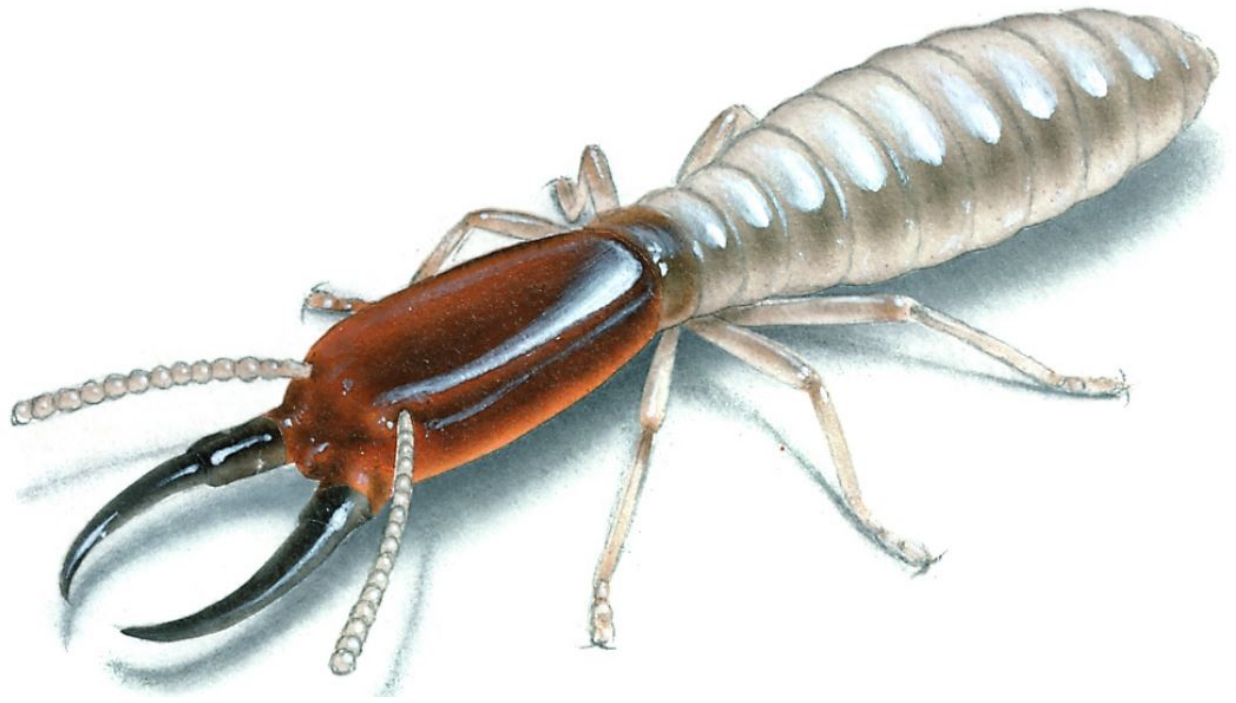
What other animals and plants live in the forest with **spiders**?

In what ways do **spiders** depend on these other animals and plants?

How do **spiders** influence their environment?

Are **spiders** producers, consumers, or decomposers?

Back of **spider** card



Termite

Where in the forest do **termites** live?

What do **termites** eat? (*Are **termites** herbivores, carnivores, or omnivores?*)

What animals prey on **termites**?

What other animals and plants live in the forest with **termites**?

In what ways do **termites** depend on these other animals and plants?

How do **termites** influence their environment?

Are **termites** producers, consumers, or decomposers?

Back of **termite** card



Shrew

Where in the forest do **shrews** live?

What do **shrews** eat? (Are **shrews** herbivores, carnivores, or omnivores?)

What animals prey on **shrews**?

What other animals and plants live in the forest with **shrews**?

In what ways do **shrews** depend on these other animals and plants?

How do **shrews** influence their environment?

Are **shrews** producers, consumers, or decomposers?

Back of [shrew](#) card



Pill bug

Where in the forest do **pill bugs** live?

What do **pill bugs** eat? (Are **pill bugs** *herbivores, carnivores, or omnivores?*)

What animals prey on **pill bugs**?

What other animals and plants live in the forest with **pill bugs**?

In what ways do **pill bugs** depend on these other animals and plants?

How do **pill bugs** influence their environment?

Are **pill bugs** producers, consumers, or decomposers?

Back of **pill bug** card



Earthworm

Where in the forest do **earthworms** live?

What do **earthworms** eat? (*Are earthworms herbivores, carnivores, or omnivores?*)

What animals prey on **earthworms**?

What other animals and plants live in the forest with **earthworms**?

In what ways do **earthworms** depend on these other animals and plants?

How do **earthworms** influence their environment?

Are **earthworms** producers, consumers, or decomposers?

Back of [earthworm](#) card



Ant

Where in the forest do **ants** live

What do **ants** eat? (Are **ants** *herbivores, carnivores, or omnivores?*)

What animals prey on **ants**?

What other animals and plants live in the forest with **ants**?

In what ways do **ants** depend on these other animals and plants?

How do **ants** influence their environment?

Are **ants** producers, consumers, or decomposers?

Back of **ant** card



Grey Wolf

Where in the forest do **grey wolves** live?

What do **grey wolves** eat? (Are **grey wolves** *herbivores, carnivores, or omnivores?*)

What animals prey on **grey wolves**?

What other animals and plants live in the forest with **grey wolves**?

In what ways do **grey wolves** depend on these other animals and plants?

How do **grey wolves** influence their environment?

Are **grey wolves** producers, consumers, or decomposers?

Back of **grey wolf** card



Black spruce

Where in the forest do **black spruce** live?

What animals eat **black spruce**?

What other animals and plants live in the forest with **black spruce**?

In what ways do **black spruce** depend on these other animals and plants?

How do **black spruce** influence their environment?

Back of black spruce card



Quaking aspen

Where in the forest do **quaking aspen** live?

What animals eat **quaking aspen**?

What other animals and plants live in the forest with **quaking aspen**?

In what ways do **quaking aspen** depend on these other animals and plants?

How do **quaking aspen** influence their environment?

Back of quaking aspen card



Balsam fir

Where in the forest do **balsam fir** live?

What animals eat **balsam fir**?

What other animals and plants live in the forest with **balsam fir**?

In what ways do **balsam fir** depend on these other animals and plants?

How do **balsam fir** influence their environment?

Back of **balsam fir** card



Algae

Where in the forest does **algae** live?

What animals eat **algae**?

What other animals and plants live in the forest with **algae**?

In what ways do **algae** depend on these other animals and plants?

How do **algae** influence their environment?

Back of **algae** card



Red squirrel

Where in the forest do **squirrels** live?

What do **squirrels** eat? (Are **squirrels** *herbivores, carnivores, or omnivores?*)

What animals prey on **squirrels**?

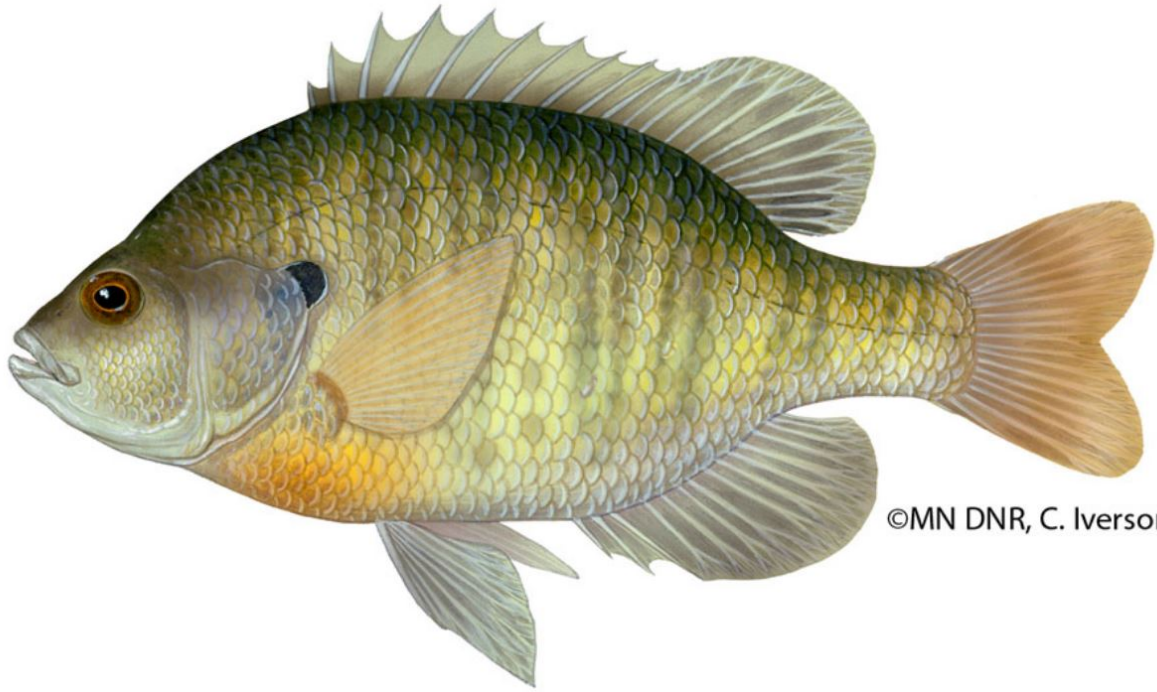
What other animals and plants live in the forest with **squirrels**?

In what ways do **squirrels** depend on these other animals and plants?

How do **squirrels** influence their environment?

Are **squirrels** producers, consumers, or decomposers?

[Back of squirrel card](#)



©MN DNR, C. Iverson

Bluegill

Where in the forest do **bluegills** live?

What do **bluegills** eat? (Are **bluegills** *herbivores, carnivores, or omnivores?*)

What animals prey on **bluegills**?

What other animals and plants live in the forest with **bluegills**?

In what ways do **bluegills** depend on these other animals and plants?

How do **bluegills** influence their environment?

Are **bluegills** producers, consumers, or decomposers?

Back of **bluegill** card



Canada goose

Where in the forest do **Canada geese** live?

What do **Canada geese** eat? (*Are Canada geese herbivores, carnivores, or omnivores?*)

What animals prey on **Canada geese**?

What other animals and plants live in the forest with **Canada geese**?

In what ways do **Canada geese** depend on these other animals and plants?

How do **Canada geese** influence their environment?

Are **Canada geese** producers, consumers, or decomposers?

Back of Canada goose card



Snowshoe hare

Where in the forest do **snowshoe hares** live?

What do **snowshoe hares** eat? (Are **cottontail rabbits** *herbivores*, *carnivores*, or *omnivores*?)

What animals prey on **snowshoe hares**?

What other animals and plants live in the forest with **snowshoe hares**?

In what ways do **snowshoe hares** depend on these other animals and plants?

How do **snowshoe hares** influence their environment?

Are **snowshoe hares** producers, consumers, or decomposers?

Back of snowshoe hare card



Bald eagle

Where in the forest do **bald eagles** live?

What do **bald eagles** eat? (*Are bald eagles herbivores, carnivores, or omnivores?*)

What animals prey on **bald eagles**?

What other animals and plants live in the forest with **bald eagles**?

In what ways do **bald eagles** depend on these other animals and plants?

How do **bald eagles** influence their environment?

Are **bald eagles** producers, consumers, or decomposers?

Back of **bald eagle** card



White-tailed deer

Where in the forest do **white-tailed deer** live?

What do **white-tailed deer** eat? (*Are white-tailed deer herbivores, carnivores, or omnivores?*)

What animals prey on **white-tailed deer**?

What other animals and plants live in the forest with **white-tailed deer**?

In what ways do **white-tailed deer** depend on these other animals and plants?

How do **white-tailed deer** influence their environment?

Are **white-tailed deer** producers, consumers, or decomposers?

Back of white-tailed deer card



Blueberry

Where in the forest do **blueberries** live?

What animals eat **blueberries**?

What other animals and plants live in the forest with **blueberries**?

In what ways do **blueberries** depend on these other animals and plants?

How do **blueberries** influence their environment?

Back of **bluberry** card



Beetle

Where in the forest do **beetles** live?

What do **beetles** eat? (Is a **beetle** a herbivore, carnivore, or omnivore?)

What animals prey on **beetles**?

What other animals and plants live in the forest with **beetles**?

In what ways do **beetles** depend on these other animals and plants?

How do **beetles** influence their environment?

Is a **beetle** a producer, consumer, or decomposer?

Back of **Beetle** card



Duckweed

Where in the forest do **duckweeds** live?

What animals eat **duckweeds**?

What other animals and plants live in the forest with **duckweeds**?

In what ways do **duckweeds** depend on these other animals and plants?

How do **duckweeds** influence their environment?

Back of **duckweed** card



Mink

Where in the forest do **minks** live?

What do **minks** eat? (Are **minks** herbivores, carnivores, or omnivores?)

What animals prey on **minks**?

What other animals and plants live in the forest with **minks**?

In what ways do **minks** depend on these other animals and plants?

How do **minks** influence their environment?

Are **minks** producers, consumers, or decomposers?

Back of [mink](#) card



Muskrat

Where in the forest do **muskrats** live?

What do **muskrats** eat? (Are **muskrats** *herbivores, carnivores, or omnivores?*)

What animals prey on **muskrats**?

What other animals and plants live in the forest with **muskrats**?

In what ways do **muskrats** depend on these other animals and plants?

How do **muskrats** influence their environment?

Are **muskrats** producers, consumers, or decomposers?

Back of muskrat card



Black-capped chickadee

Where in the forest do **chickadees** live?

What do **chickadees** eat? (Are **chickadees** *herbivores, carnivores, or omnivores?*

What animals prey on **chickadees**?

What other animals and plants live in the forest with **chickadees**?

In what ways do **chickadees** depend on these other animals and plants?

How do **chickadees** influence their environment?

Are **chickadees** producers, consumers, or decomposers?

[Back of chickadee card](#)



Common loon

Where in the forest do **common loons** live?

What do **common loons** eat? (Are **common loons** *herbivores, carnivores, or omnivores?*)

What animals prey on **common loons**?

What other animals and plants live in the forest with **common loons**?

In what ways do **common loons** depend on these other animals and plants?

How do **common loons** influence their environment?

Are **common loons** producers, consumers, or decomposers?

Back of common loon card



Raven

Where in the forest do **ravens** live?

What do **ravens** eat? (*Are **ravens** herbivores, carnivores, or omnivores?*)

What animals prey on **ravens**?

What other animals and plants live in the forest with **ravens**?

In what ways do **ravens** depend on these other animals and plants?

How do **ravens** influence their environment?

Are **ravens** producers, consumers, or decomposers?

Back of [raven card](#)