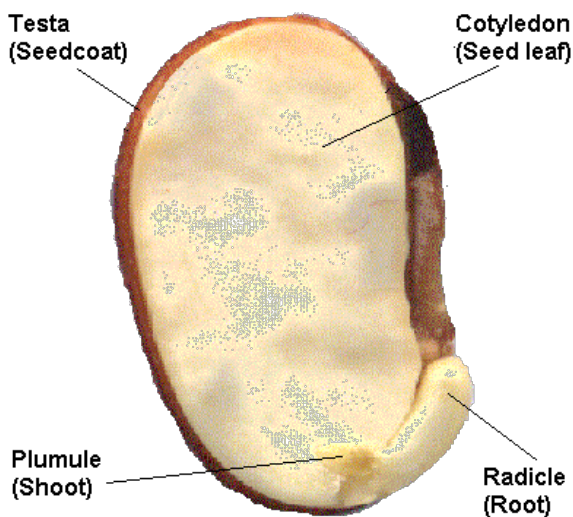
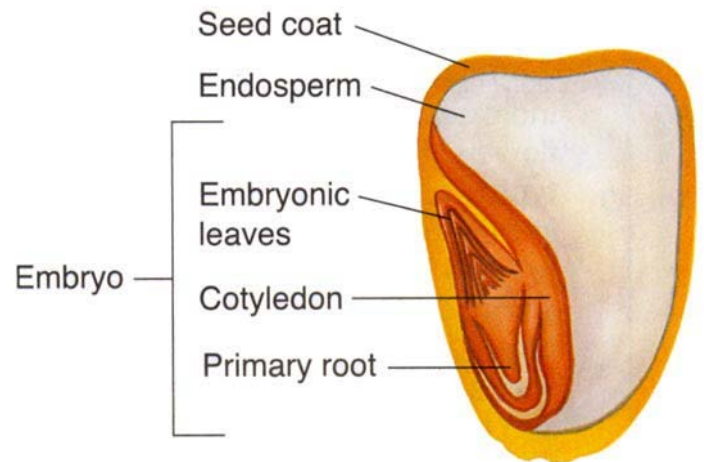
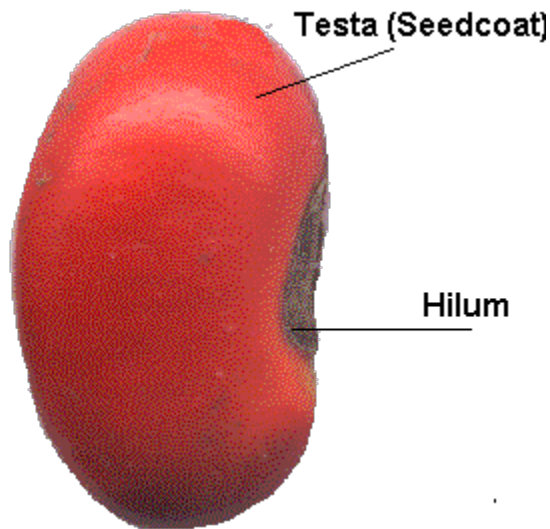


Parts of a Seed

PLT's Have Seeds Will Travel



Seeds contain

- The **testa**, or seedcoat, which protects the seed.
- The **hilum**, the scar where the seed was once attached to the parent plant.
- The **embryo** of the new plant
- A **cotyledon** (food supply for the embryo until it has formed sufficient roots and leaves to get its own food)
- **Endosperm** (food), which may be in the seed leaves or it may be outside the seed leaves and be absorbed when the seed germinates.



Soaked Lima bean

When seeds germinate (start to grow), the **seed leaves** absorb water and swell. Then the **radicle** reaches down into the soil to become a root, and the **plumule** reaches up toward the sun and will become the plant's new stem.