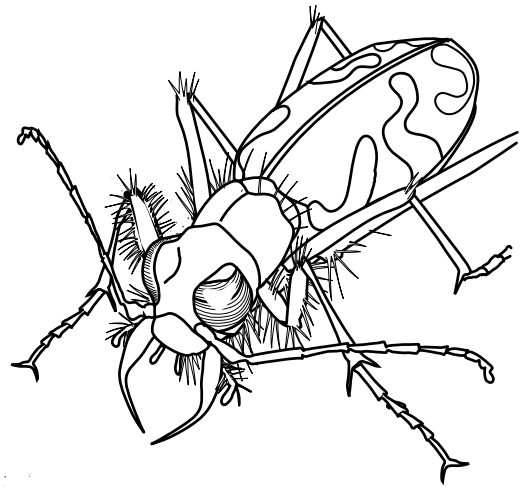
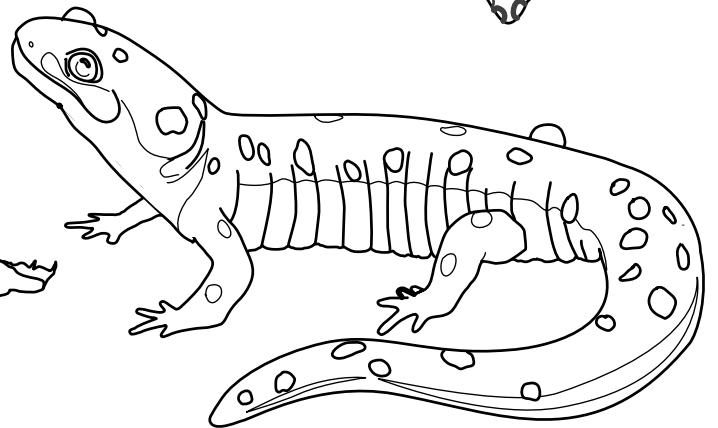
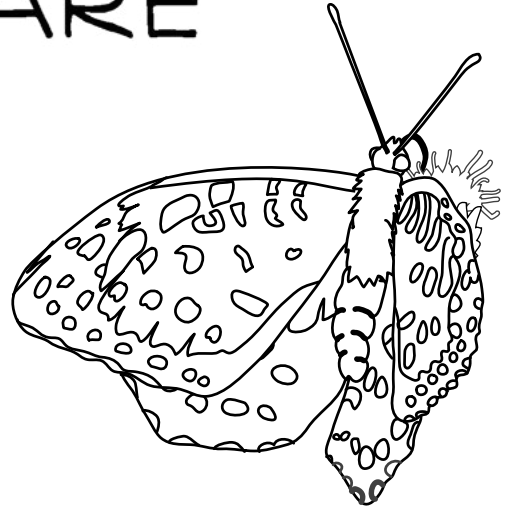
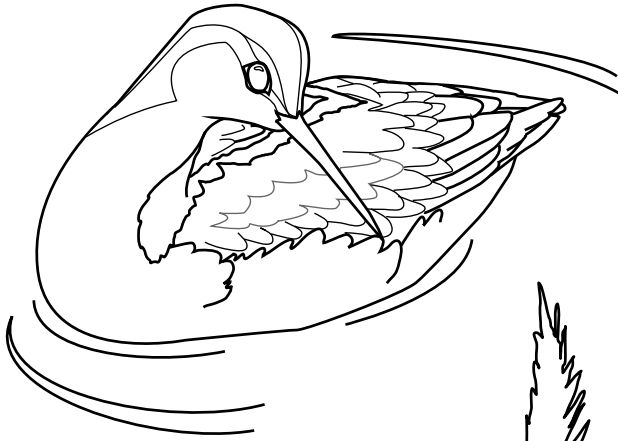

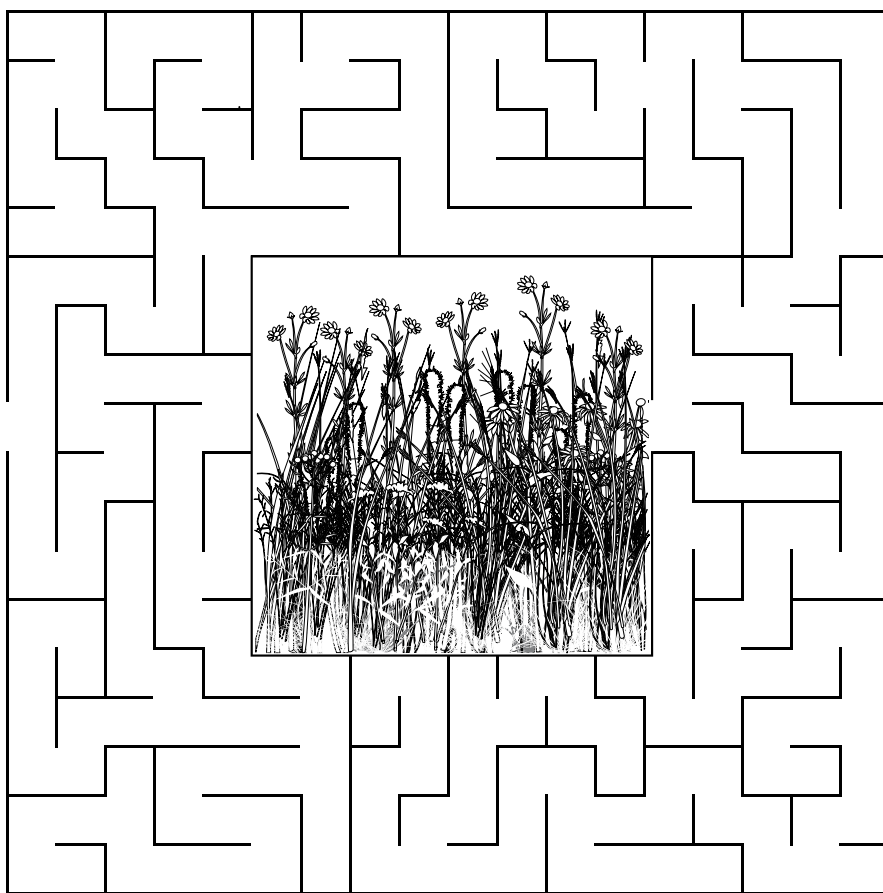


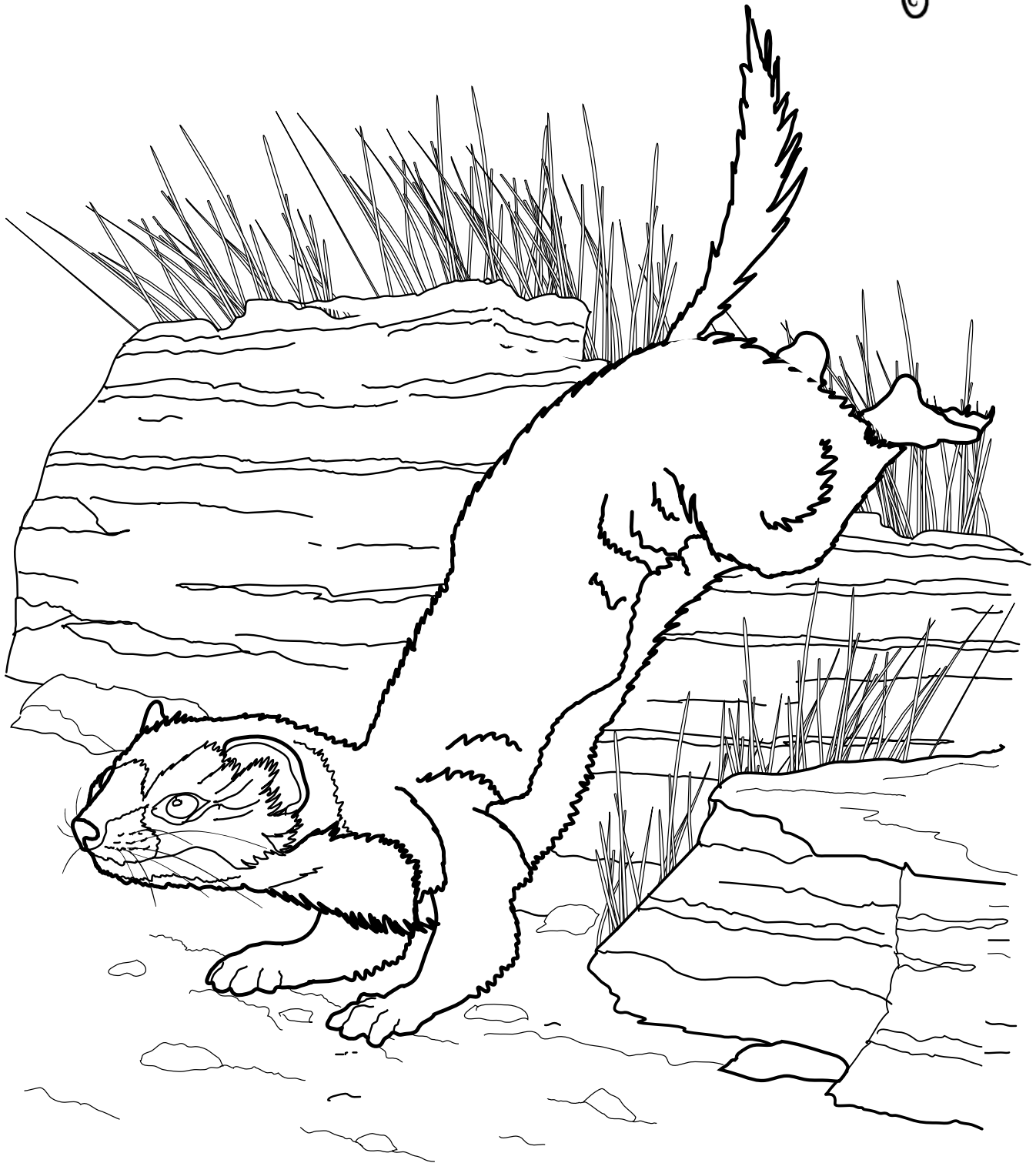
MINNESOTA'S WILD & RARE



Coloring  PUZZLE
Book

Help the least weasel find the way to its habitat.

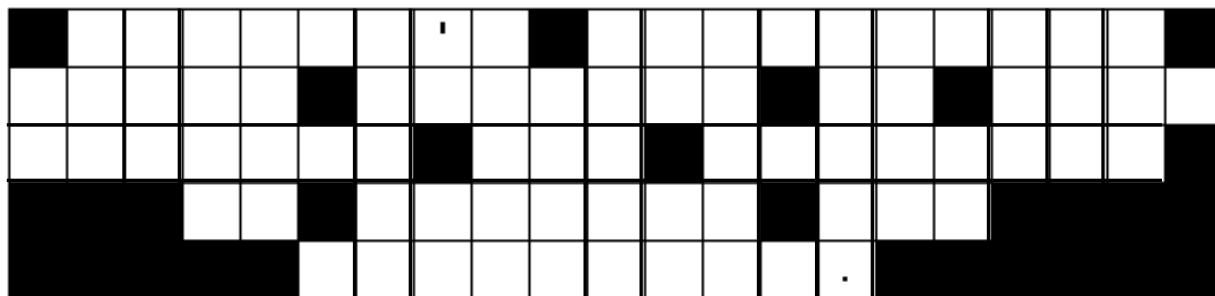




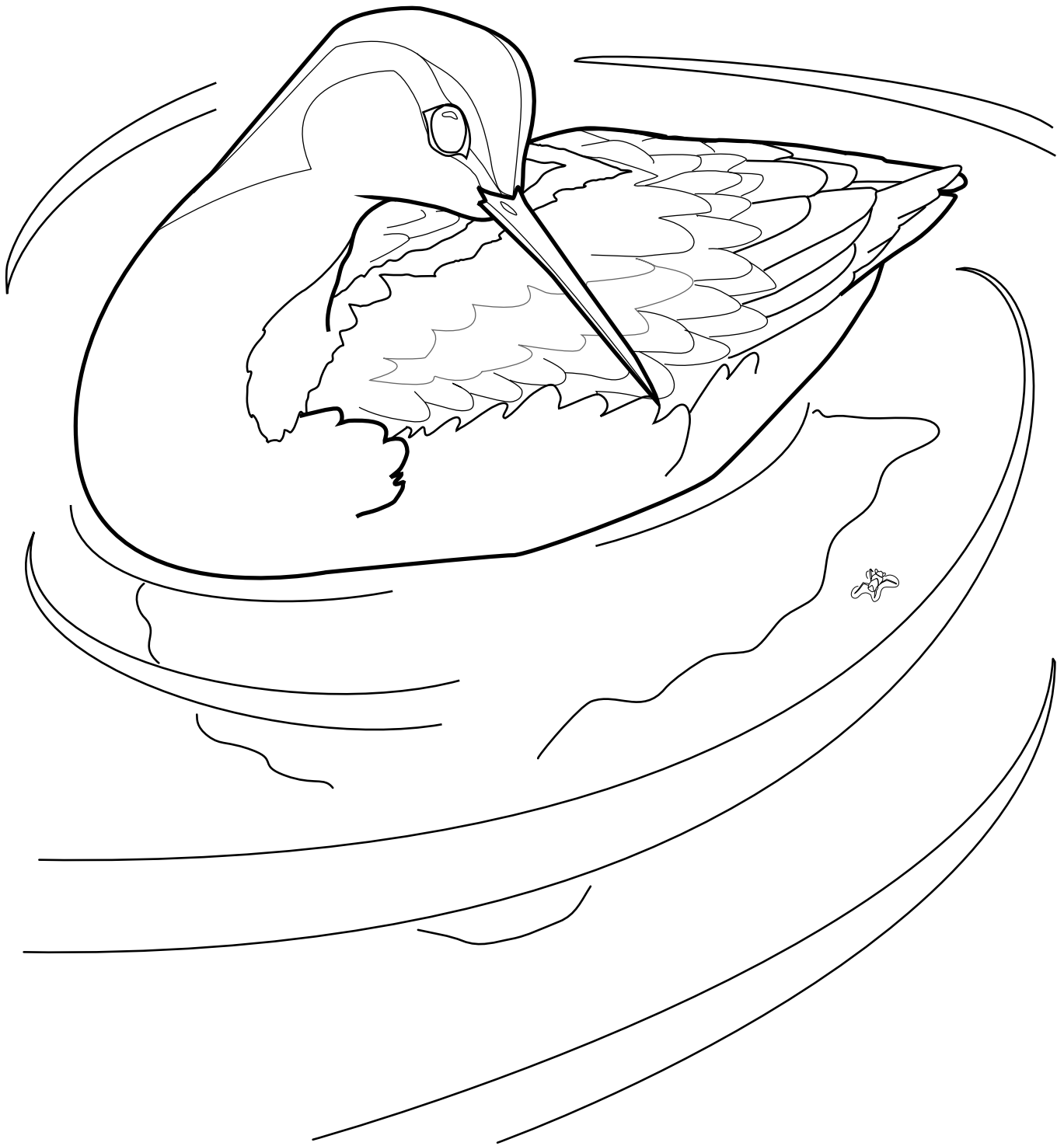
Least Weasel (*Mustela nivalis*)

The world's smallest carnivore, least weasels are only about 6 inches long and weigh only 2 ounces. They need to eat about half their own body weight every day to survive.

To solve this puzzle, you must rearrange letters in each column. The letters appearing in each column of the completed phrase are listed out of order directly under the same column above it in the puzzle.




B N V S
 N D N L N T I W A N
 A R I H O S O S T D H N L A L O P D L
 M P E S N E W G E I E R A E I R D S A S
 S W I L S A R I A N P I A A T N A N E S T




Wilson's Phalarope (*Phalaropus tricolor*)

This long-legged shorebird often feeds while floating on the water, sometimes spinning like a top to stir up its prey. Females are more brightly colored than males, and unusual trait in Minnesota birds.

Unscramble each of the clue words that is a common name for an amphibian.
Take the letters that appear in  boxes and unscramble them to reveal the amphibian group
of these seven species found in Minnesota.




TOSTEPD

						
--	--	--	--	--	--	--


BELU-DETTSPD

					–							
--	---	--	--	--	---	---	--	--	--	--	--	--


SENRAET ERD-DEBCAK

								–				–							
--	---	--	--	--	--	---	--	---	--	--	--	---	--	---	--	--	--	--	--

OFUR-DOTE

					–					
--	--	--	--	--	---	--	--	--	--	--

GETIR

					
--	--	--	--	---	--

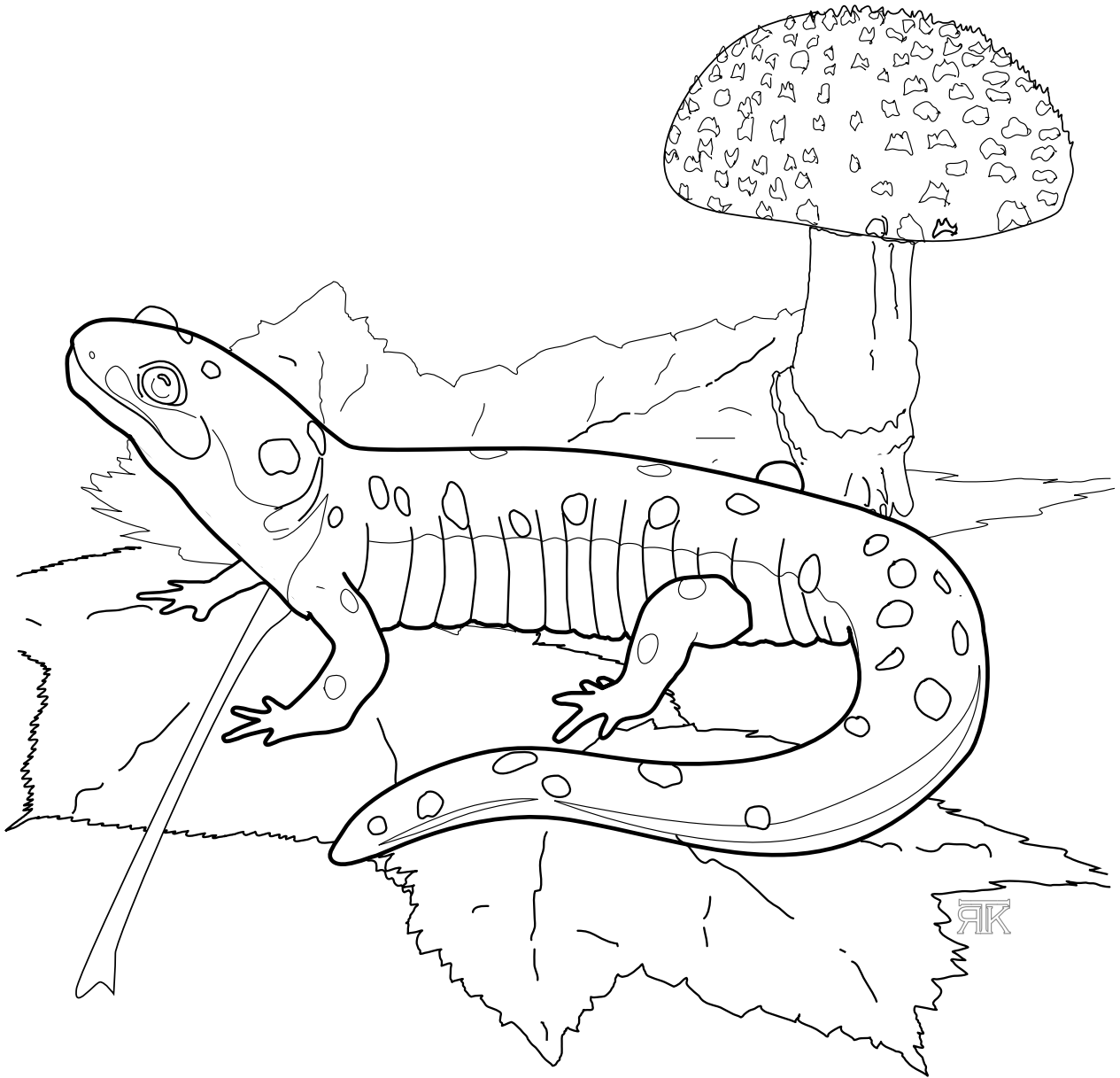
TENW

				
---	--	--	--	--

DUPMYUPP

								
---	--	--	--	--	--	--	--	--

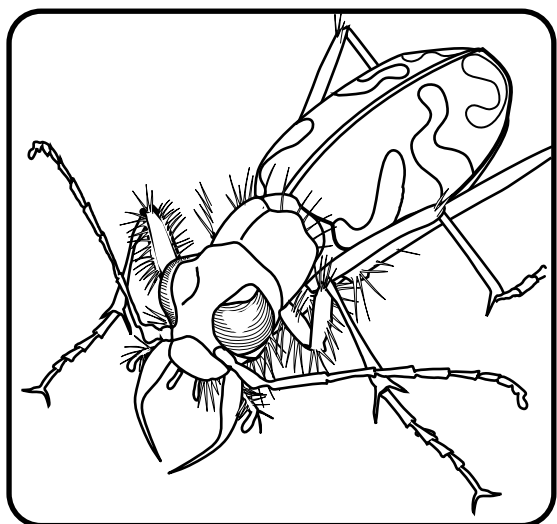
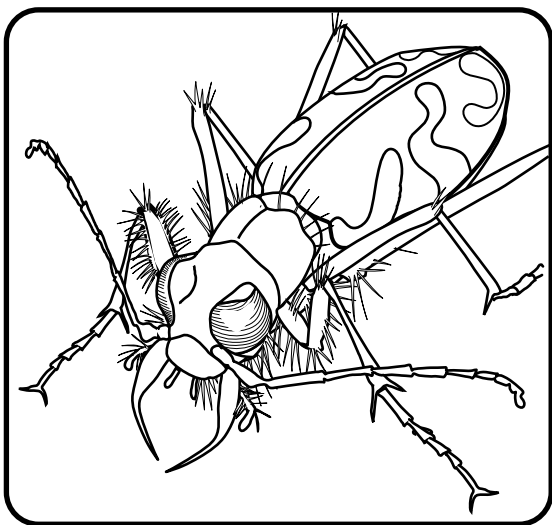
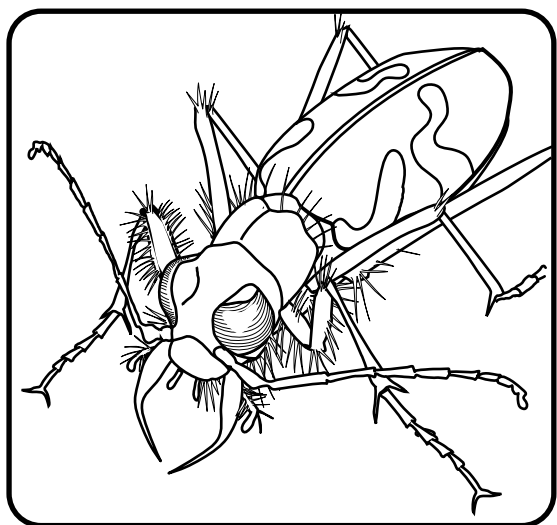
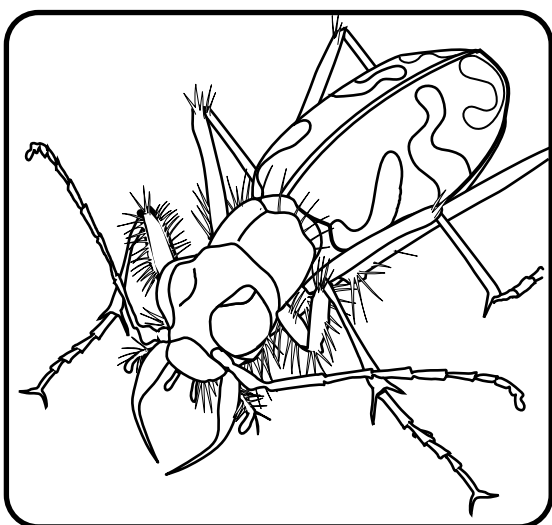
					A					
--	--	--	--	--	---	--	--	--	--	--

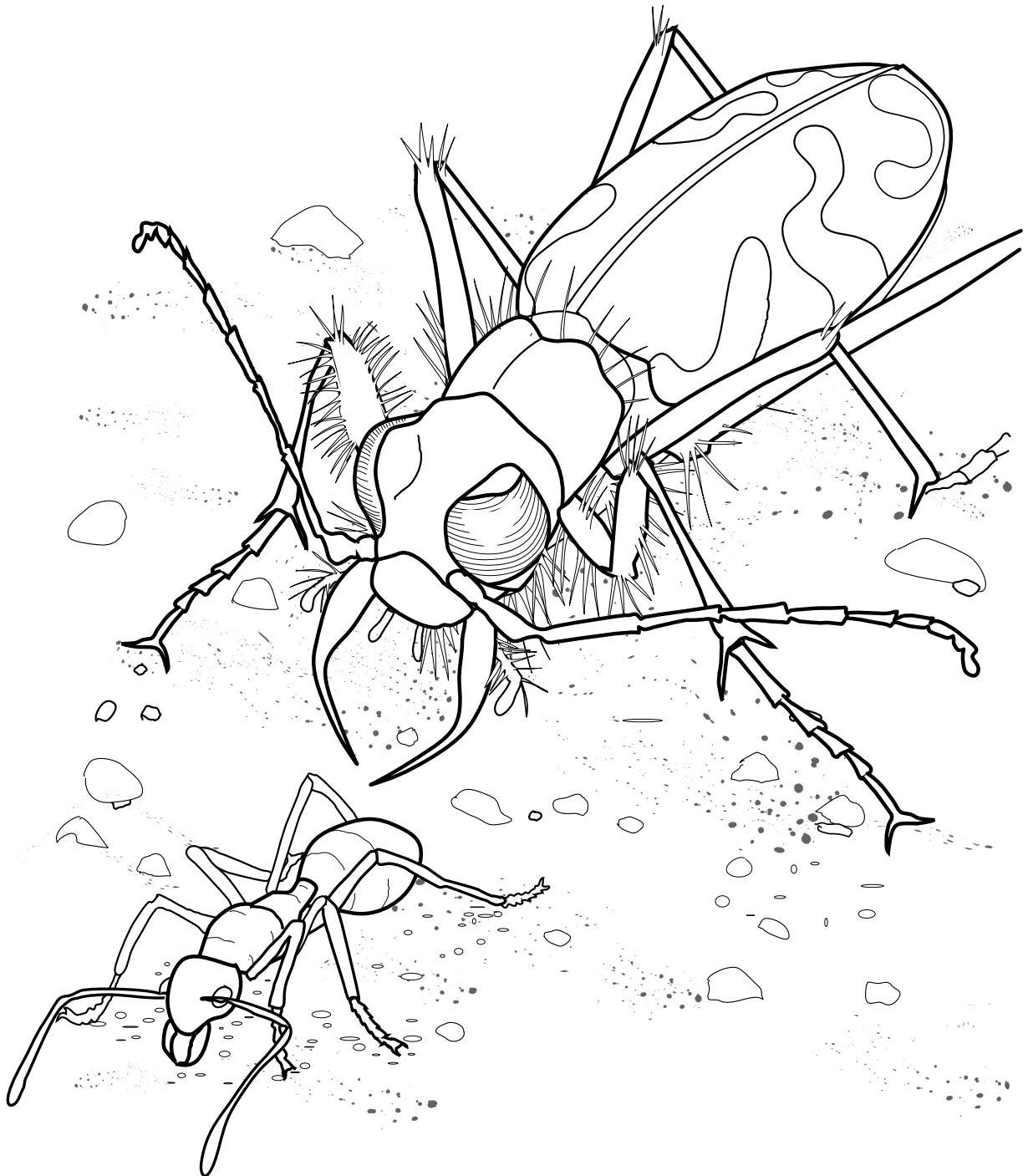


Spotted salamander (*Ambystoma maculatum*)

First discovered in Minnesota in 2001, spotted salamanders spend most of their time underground in forests. In early spring, they can be found in woodland ponds, bogs, and wetlands.

Which Splendid tiger beetle below matches the one on the following page?

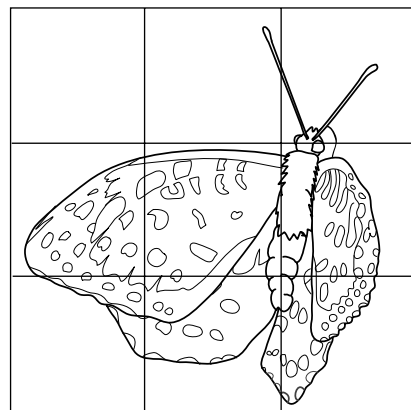


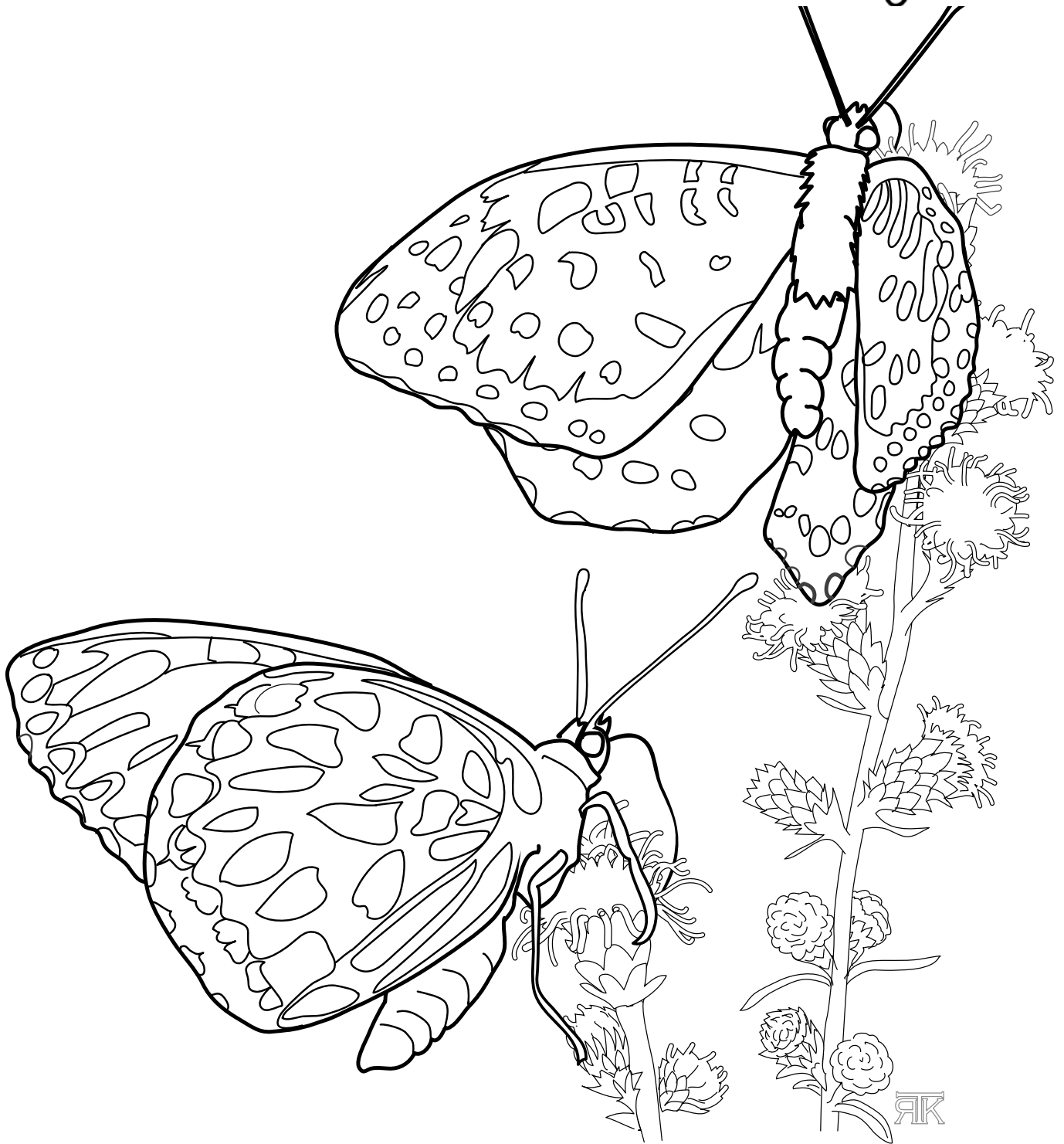


Splendid tiger beetle (*Cicindela splendida cyanocephalata*)

Adult tiger beetles search for prey in fast bursts with short stops in between runs. Larvae dig burrows, which they leap out of to quickly grab prey and pull it into the burrow to eat.

Wild & Rare Insects – *Draw the Butterfly*





Regal fritillary (*Speyeria idalia*)

Found only in native prairies, this rare butterfly needs particular wildflowers to survive. Larvae feed only on the leaves of violets, and adults feed on nectar

See if you can find the 21 common names of rare mussels listed below:

E S O N P E E H S R C M F G L D Q L
 W F Y R E H Z D M S E Z P I J R P L
 J Z F F F P A X Z L Y G P A S A M E
 A T L L E H S D E T U L F N A O U H
 H J F C O Z F P J R D U W T L B C S
 X R R A W K H B Y T S S Y F A H K Y
 S P E C T A C L E C A S E L M S E N
 L P G O N P F A A S E V E O A A T O
 E L I T T R O L B L K Y E A N W Z B
 R L E S E G E C K Y E V X T D J Q E
 W A L T T S I T K S T F O E E B T M
 R F T I H O O P N E X R Y R R U Z U
 C U O E P E L I D C T H A M G P Q L
 B P L Z E S G G Z N Q B A W Z Y V P
 R L P X I G E W R C U K O C F O U A
 N R R V I A Q J C I G O D O R C R R
 V S A H E K I P S F P S R Q K O Z Q
 S N U F F B O X M O N K E Y F A C E

BUTTERFLY

ELEPHANTEAR

ELLIPSE

FLUTEDSHELL

HIGGINS EYE

MUCKET

ROUND PIGTOE

SCALESHELL

SNUFFBOX

SPIKE

WASHBOARD

EBONYSHELL

ELKTOE

FAT POCKETBOOK

GIANT FLOATER

MONKEYFACE

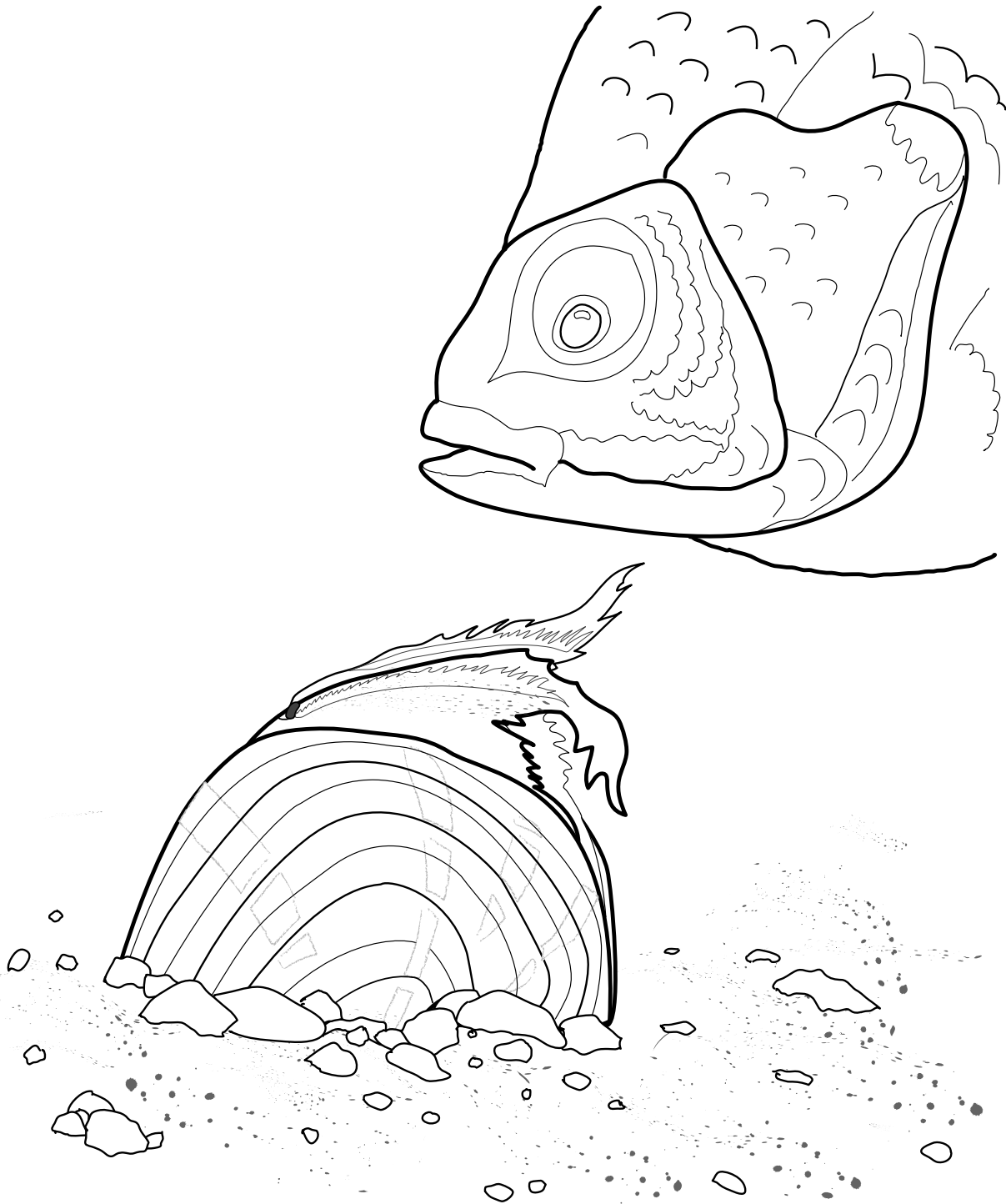
PISTOLGRIP

SALAMANDER

SHEEPNOSE

SPECTACLECASE



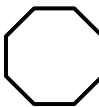

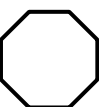

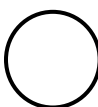


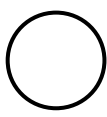
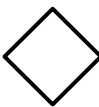

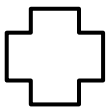

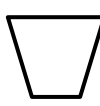
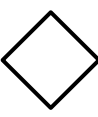

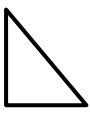


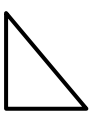
WARTYBACK



Higgins eye (*Lampsilis higginsii*)

A hungry bluegill is lured by the display behavior of an adult female Higgins eye mussel. If the fish strikes the display, glochidia (mussel larvae) will attach to the fish's gills where they will develop into juvenile mussels.

Solve the names of the 7 animal groups listed to the right by transferring each letter from one shape to the same shape in the word below. *Difficulty level = medium*

									Mussel
									Bird
									Reptile
									Amphibian
									Fish
									Mammal
									Insect

Wild & Rare Puzzles – Solutions



Bird Fallen Phrase

"Wilson's Phalaropes spend winters in salt marshes and wetlands in Bolivia and Argentina."

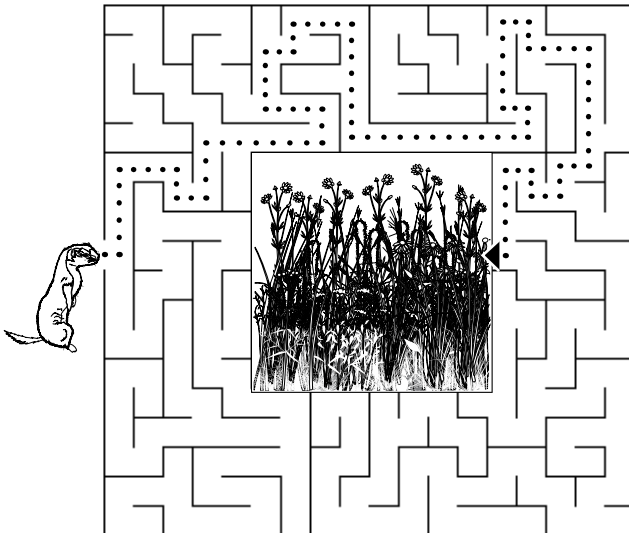
Amphibian Hidden Message

1. spotted 2. blue-spotted 3. eastern red-backed
4. four-toed 5. tiger 6. newt 7. mudpuppy
"salamanders"

Animal Groups - Letter Drop Down

Bird
Fish
Insect
Reptile
Amphibian
Mammal
Mussel

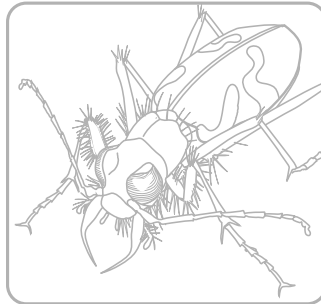
Mammal Habitat Maze



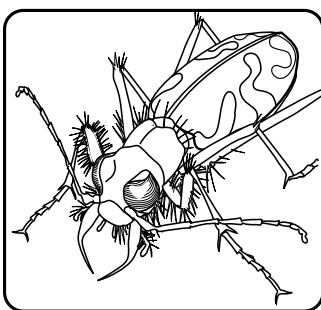
Beetle Match



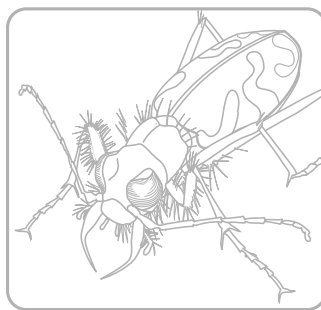
no



no

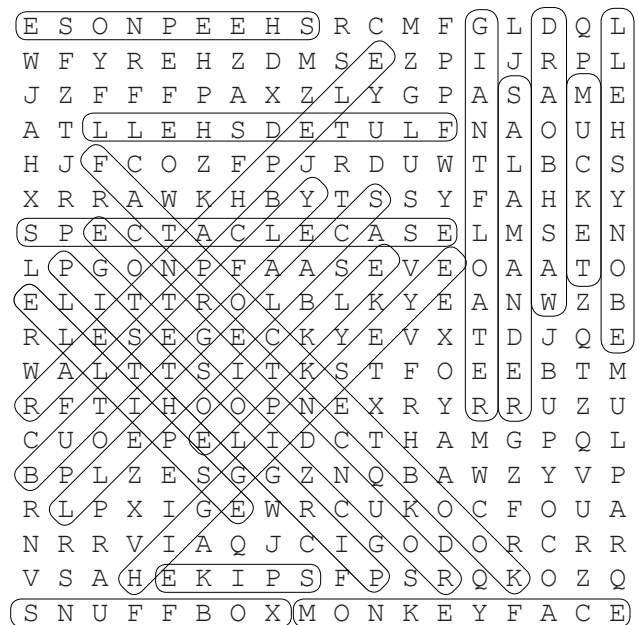


yes!



no

Mussel Word Search



BUTTERFLY
ELEPHANT
ELLIPSE
FLUTED SHELL
HIGGINS EYE
MUCKET
ROUND PIGTOE
SCALE SHELL
SNUFFBOX
SPIKE
WASHBOARD

EBONY SHELL
ELK TOE
FAT POCKETBOOK
GIANT FLOATER
MONKEYFACE
PISTOLGRIP
SALAMANDER
SHEEPNOSE
SPECTACLECASE
WARTYBACK

The wild animals featured in this book are only six of almost 300 wildlife species in Minnesota that are rare or likely to become rare in the near future. We can all help conserve these native animals and their habitats.

- To learn more, visit www.mndnr.gov/wildandrare and www.mndnr.gov/cwcs
- To donate to the Nongame Wildlife Fund, go to www.mndnr.gov/checkoff.
- To see some of Minnesota's Wild and Rare animals up close, visit the new Minnesota Trail at the Minnesota Zoo: www.mnzoo.org



Created by the MnDNR Division of Ecological and Water Resources: Illustrations by Thomas Robert Klein.
Text and puzzles by Jan Shaw Wolff. Scientific expertise from Robert Dana, Liz Harper,
Konrad Schmidt, and Bernard Sietman.

Some puzzles created with Puzzlemaker at DiscoverySchool.com.

500 Lafayette Road
St. Paul, MN 55155-4040
888-646-6367 or 651-296-6157
mndnr.gov

The Minnesota DNR prohibits discrimination in its programs and services based on race, color, creed, religion, national origin, sex, marital or familial status, disability, public assistance status, age, sexual orientation, and local human rights commission activity. Individuals with a disability who need a reasonable accommodation to access or participate in DNR programs and services please contact the DNR ADA Title II Coordinator at info.dnr@state.mn.us, 651-296-6157. For TTY/TDD communication contact us through the Minnesota Relay Service at 711 or 800-627-3529. Discrimination inquiries should be sent to Minnesota DNR, 500 Lafayette Road, St. Paul, MN 55155-4049.

This document is available in alternative formats to individuals with disabilities by contacting info.dnr@state.mn.us, 651-296-6157. For TTY/TDD communication contact us through the Minnesota Relay Service at 711 or 800-627-3529.

©2018, State of Minnesota, Department of Natural Resources