

Potential Habitat - Longspurs
Aerial Photo Interpretation by Township

Township	Total # Sections Examined (Full Sect)	# Sections With Potential Habitat	% Sections With Potential Habitat
1. Addison	36	1	02.8 %
2. Amenia	36	5	13.9 %
3. Arthur	36	2	05.6 %
4. Barnes	41	3	07.3 %
5. Bell	36	5	13.9 %
6. Berlin	36	2	05.6 %
7. Casselton	36	2	05.6 %
8. Davenport	36	5	13.9 %
9. Durbin	36	7	19.4 %
10. Everest	36	8	22.2 %
11. Gardner	36	1	02.8 %
12. Gunke1	36	0	0 %
13. Harmony	36	1	02.8 %

CASS COUNTY
(page 2)

Potential Habitat - Longspurs
Aerial Photo Interpretation by Township

Township	Total # Sections Examined (Full Sect)	# Sections With Potential Habitat	% Sections With Potential Habitat
14. Harwood	35	0	0 %
15. Hunter	36	7	19.4 %
16. Kinyon	36	0	0 %
17. Leonard	36	17	47.2 %
18. Maple River	36	5	13.9 %
19. Mapleton	36	1	02.8 %
20. Noble	33	0	0 %
21. Normana	36	0	0 %
22. Pleasant	40	5	12.5 %
23. Raymond	36	5	13.9 %
24. Reed	40	5	12.5 %
25. Rush River	36	0	0 %
26. Stanley	40	1	02.5 %

CASS COUNTY
(page 3)

Potential Habitat - Longspurs
Aerial Photo Interpretation by Township

Township	Total # Sections Examined (Full Sect)	# Sections With Potential Habitat	% Sections With Potential Habitat
27. Warren	36	0	0 %
28. Wiser	34	1	02.9 %

TOWNSHIP TOTAL = 28

1019

89

08.7 %



MAP OF

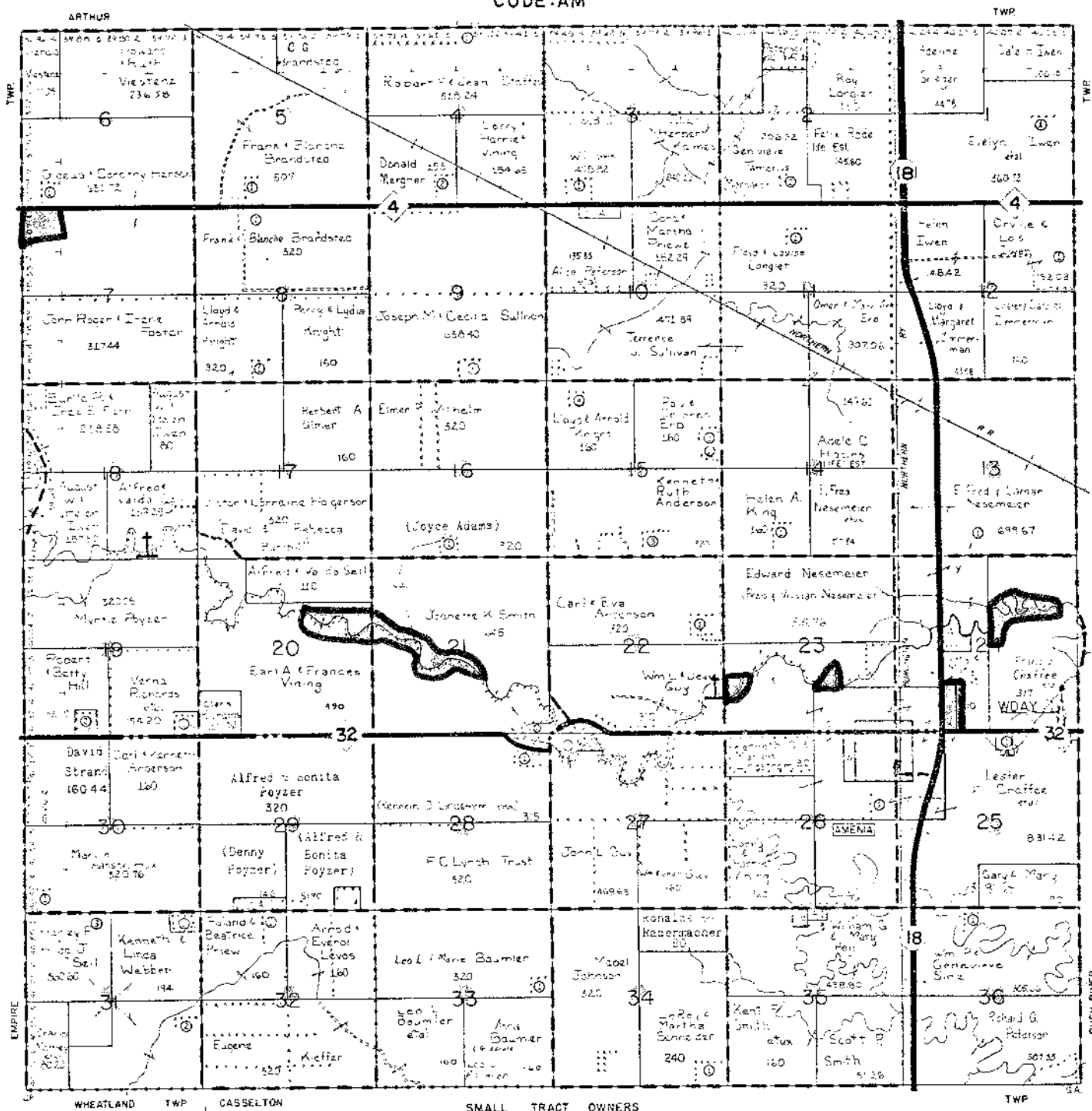
AMENIA

TOWNSHIP 141 N

RANGE 52 W



CODE:AM



SEE SMALL TRACT SECTION FOLLOWING TOWNSHIP MAPS



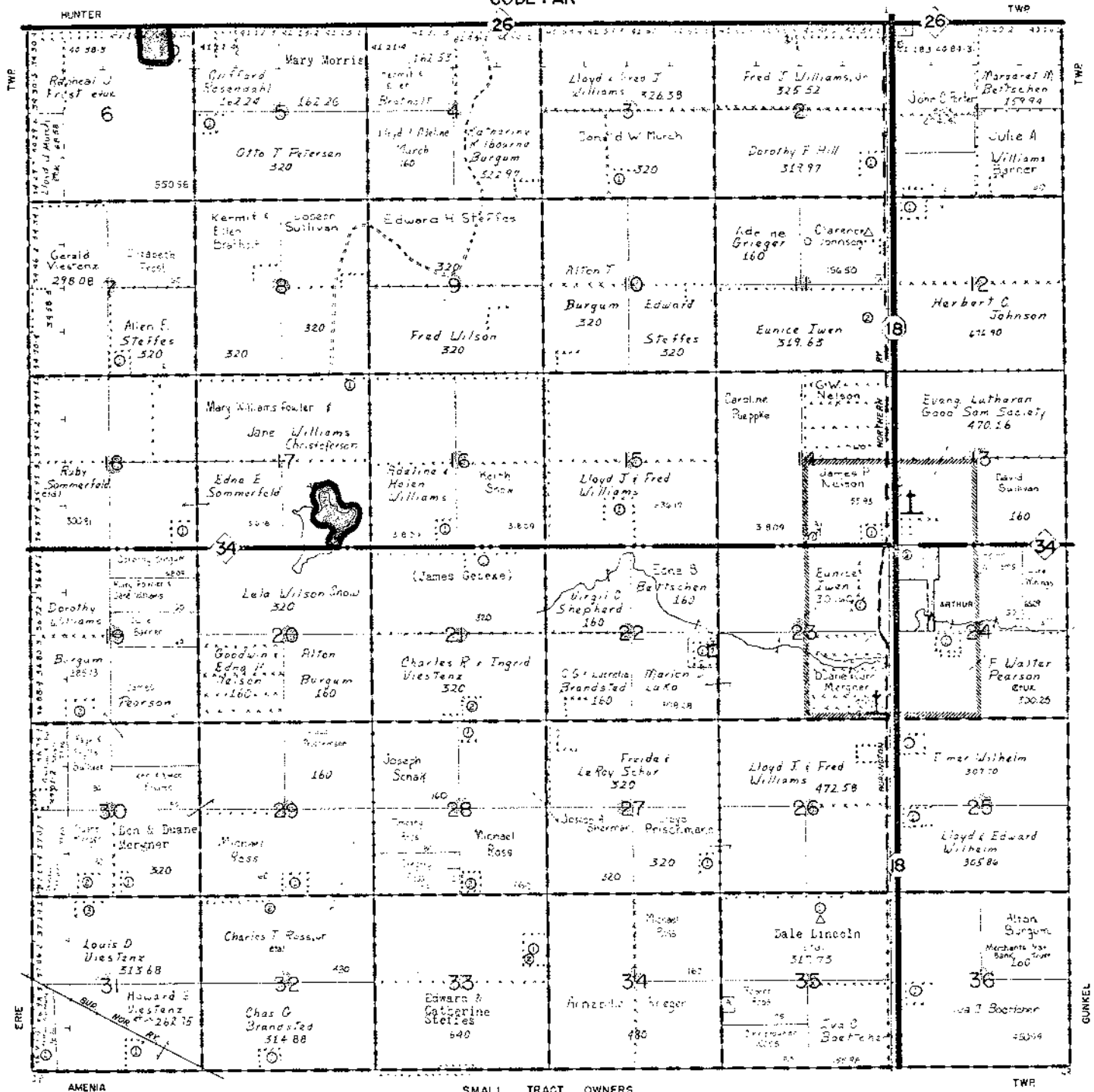
MAP OF ARTHUR



TOWNSHIP 142 N

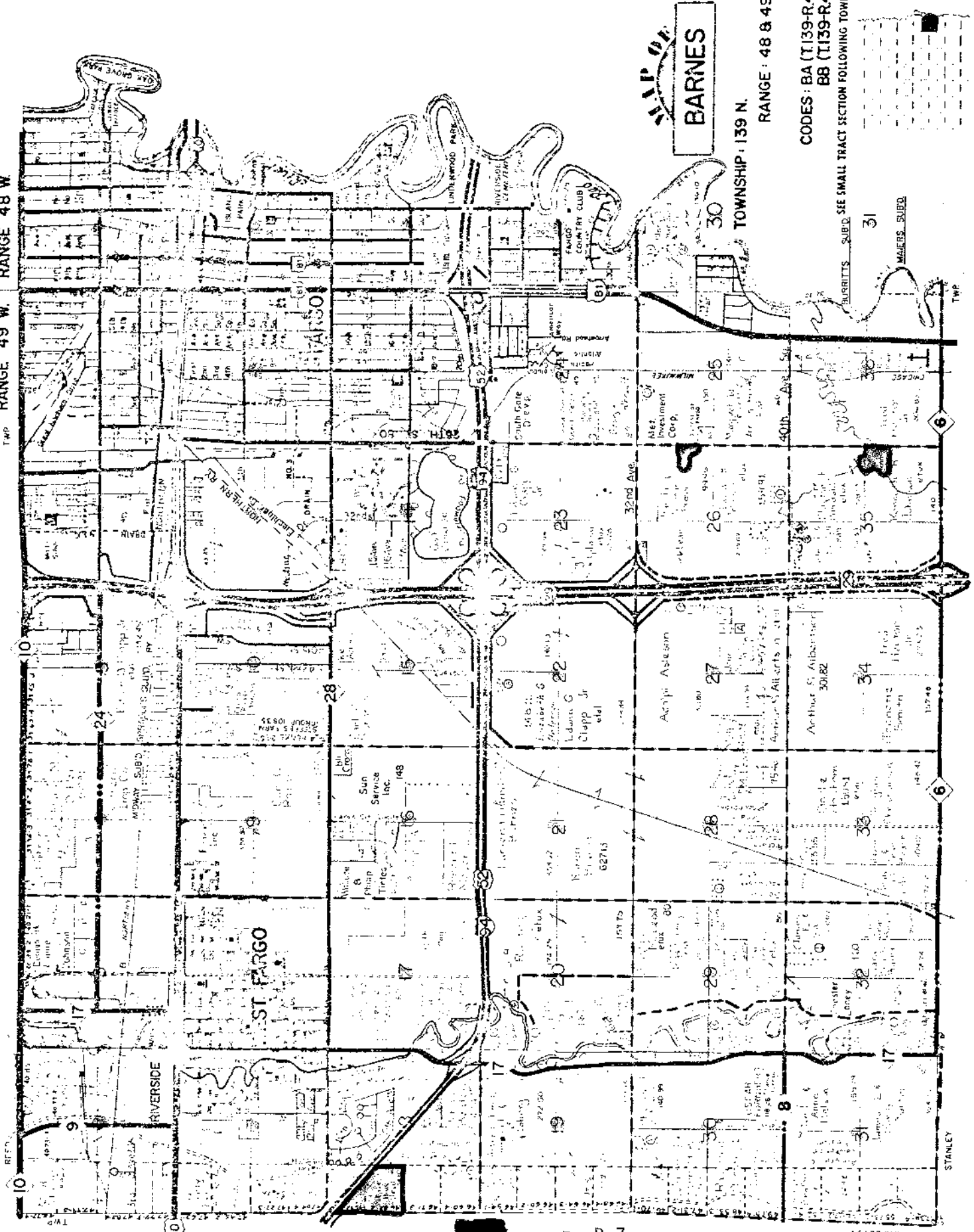
RANGE 52 W

CODE: AR



SEE SMALL TRACT SECTION FOLLOWING TOWNSHIP MAPS

TWP RANGE 49 W. RANGE 48 W.



BARNES

TOWNSHIP 139 N.

RANGE 48 & 49 W.

CODES: BA (T139-R49)
BB (T139-R48)

SEE SMALL TRACT SECTION FOLLOWING TOWNSHIP MAPS

31

MAJES SUBD

STANLEY



MAP OF

BELL

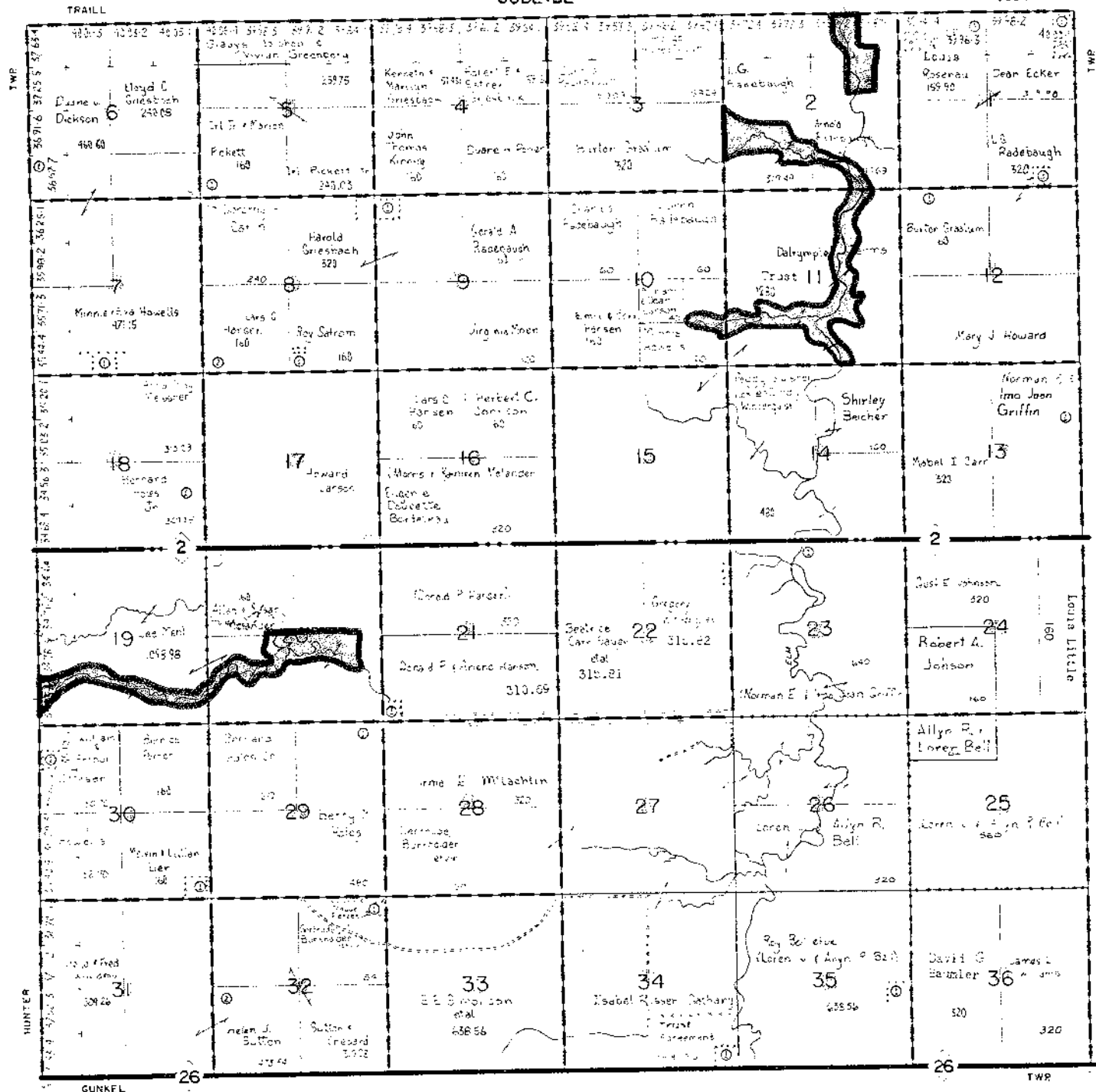


TOWNSHIP 143 N

RANGE 51 W

CODE:BE

COUNTY





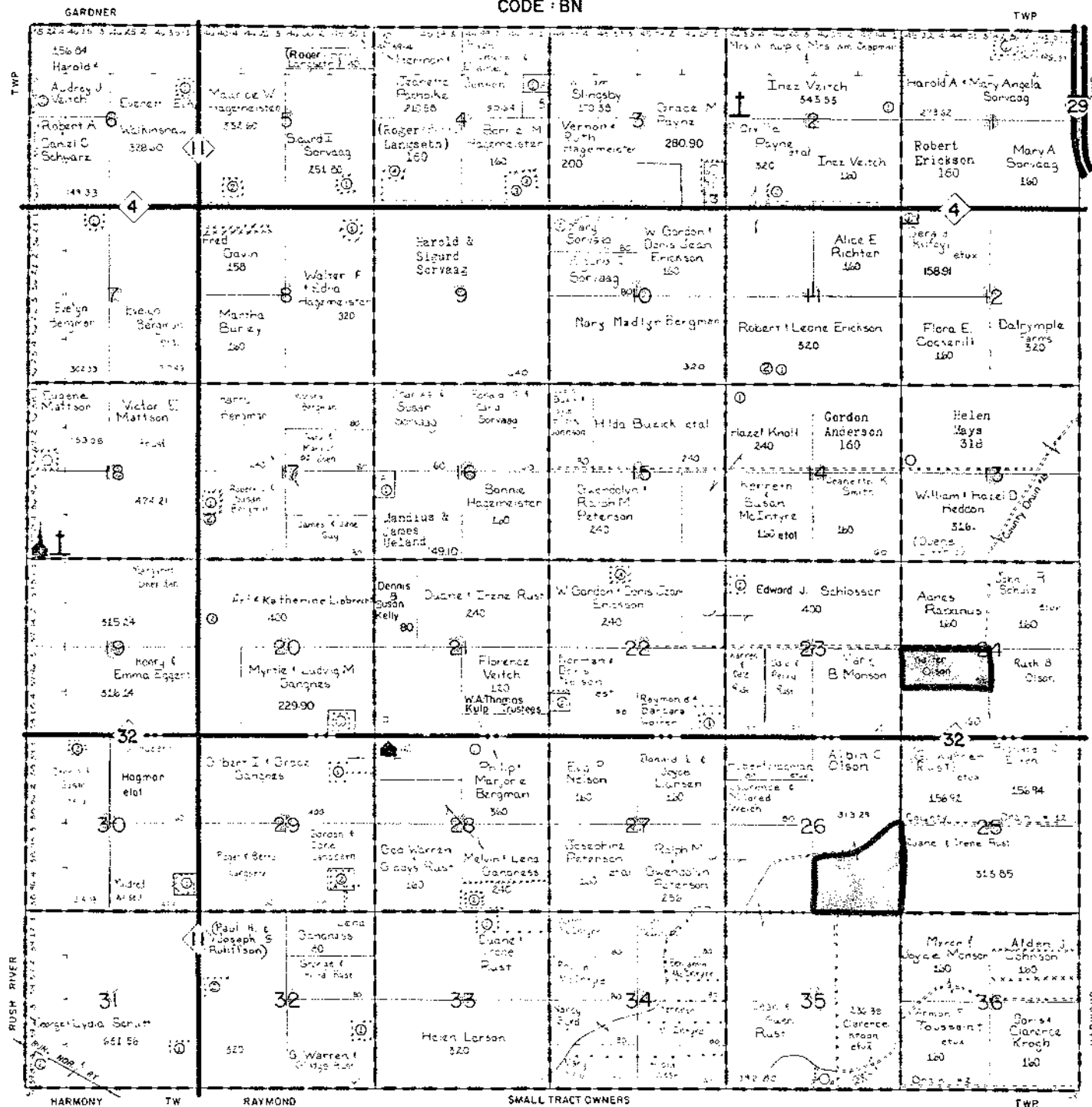
MAP OF BERLIN



TOWNSHIP 141 N

RANGE 50 W

CODE BN



SEE SMALL TRACT SECTION FOLLOWING TOWNSHIP MAPS

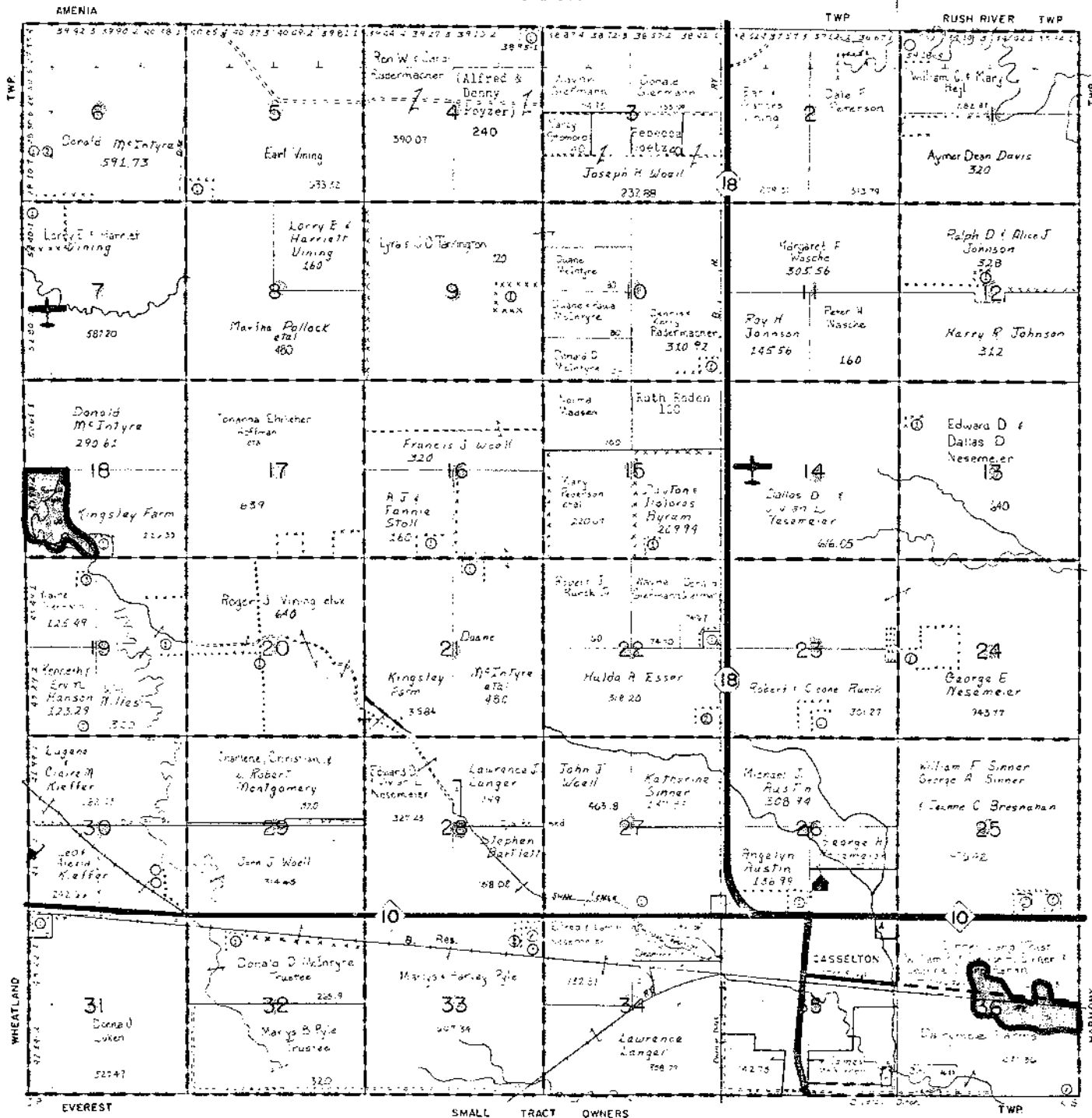


MAP OF CASSELTON

TOWNSHIP 140 N

RANGE 52 W

CODE:CA



SEE SMALL TRACT SECTION FOLLOWING TOWNSHIP MAPS



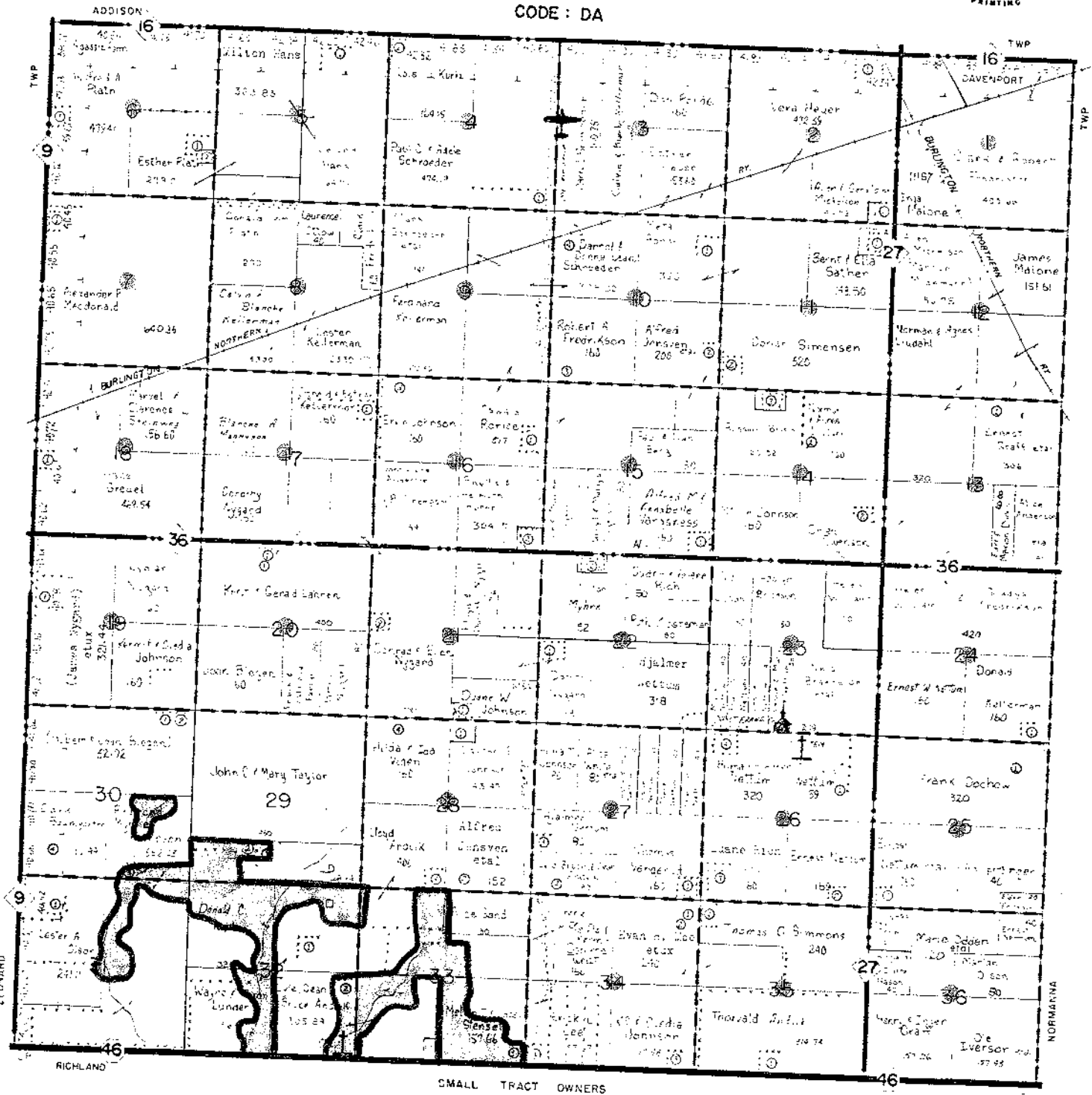
MAP OF DAVENPORT

TOWNSHIP 137 N

RANGE 51 W



CODE : DA



SEE SMALL TRACT SECTION FOLLOWING TOWNSHIP MAPS



MAP OF DURBIN

TOWNSHIP 139 N

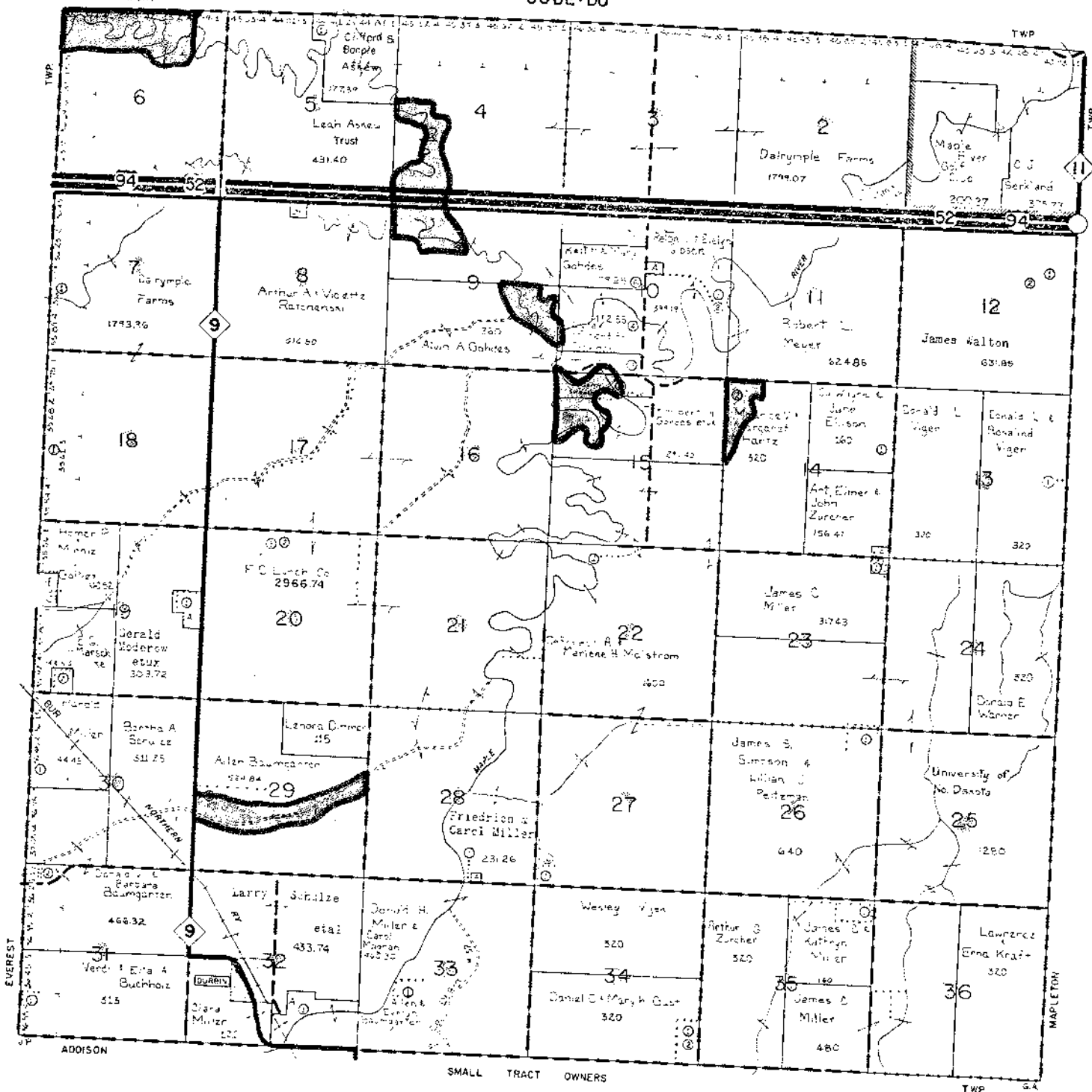
RANGE 51 W



CODE: DU

HARMONY

TWP



SEE SMALL TRACT SECTION FOLLOWING TOWNSHIP MAPS



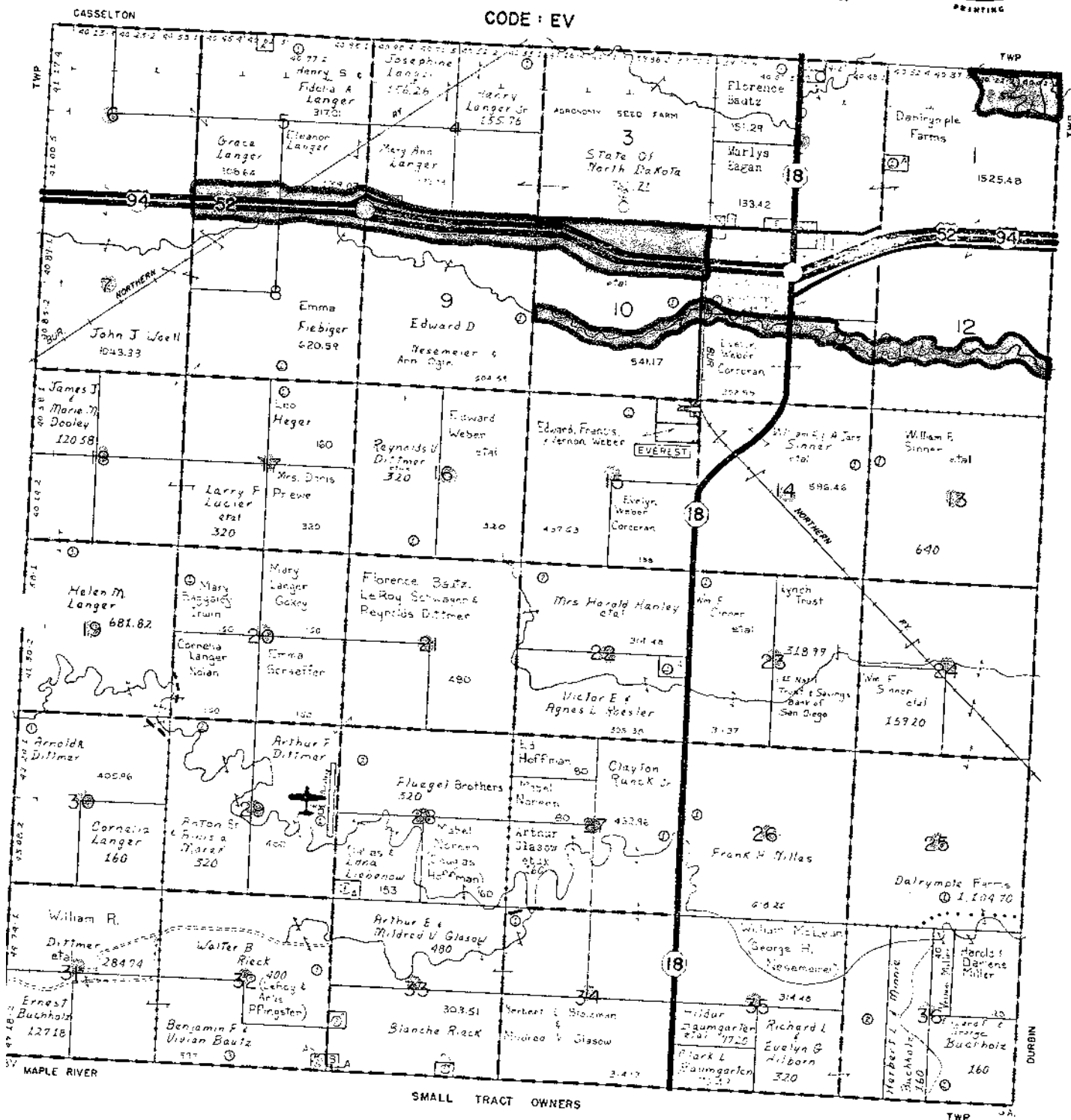
MAP OF EVEREST



TOWNSHIP 139 N

RANGE 52 W

CODE : EV



SMALL TRACT OWNERS

SEE SMALL TRACT SECTION FOLLOWING TOWNSHIP MAPS



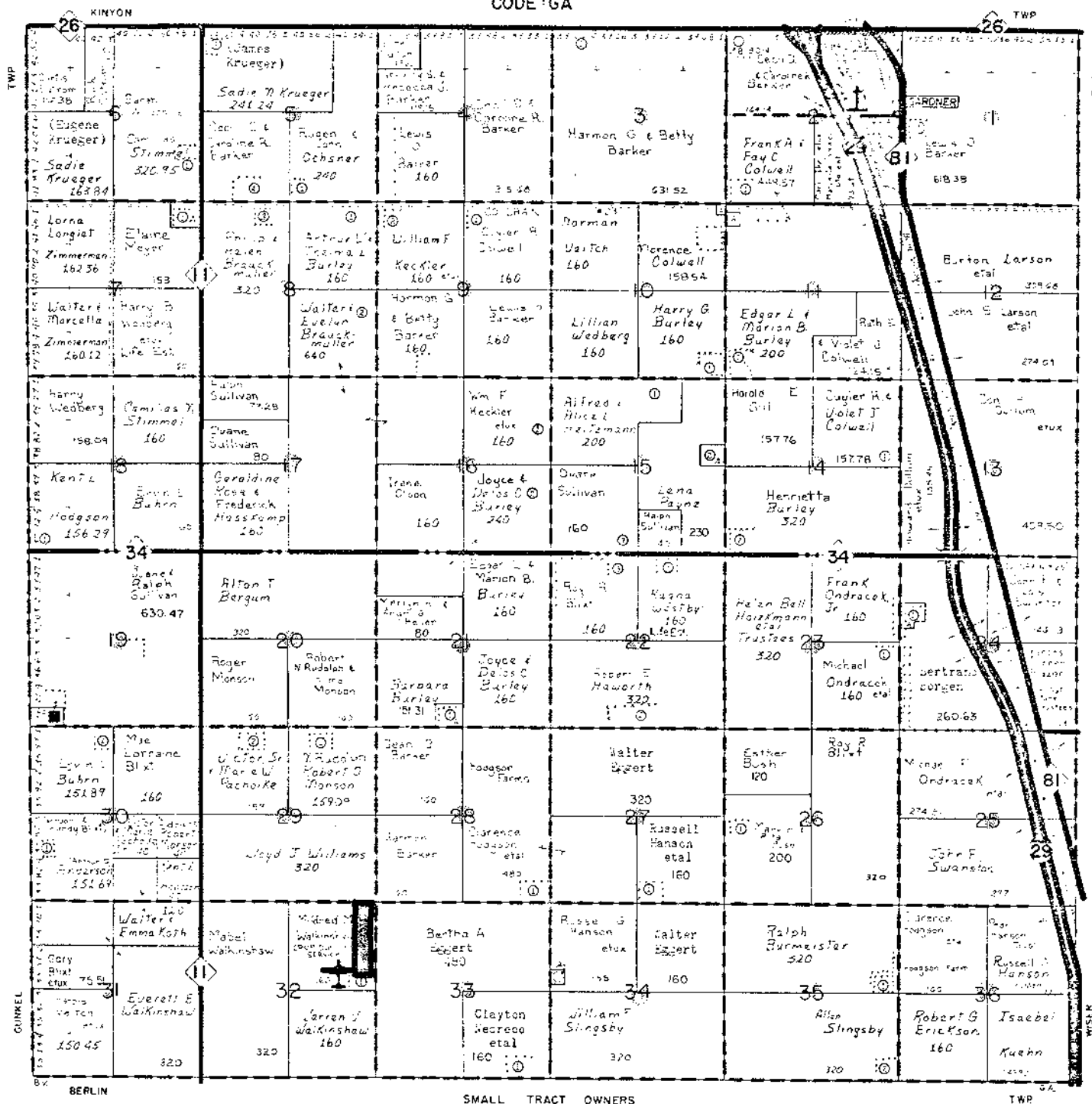
MAP OF GARDNER



TOWNSHIP 142 N

RANGE 50 W

CODE GA



SMALL TRACT OWNERS

TWP

SEE SMALL TRACT SECTION FOLLOWING TOWNSHIP MAPS

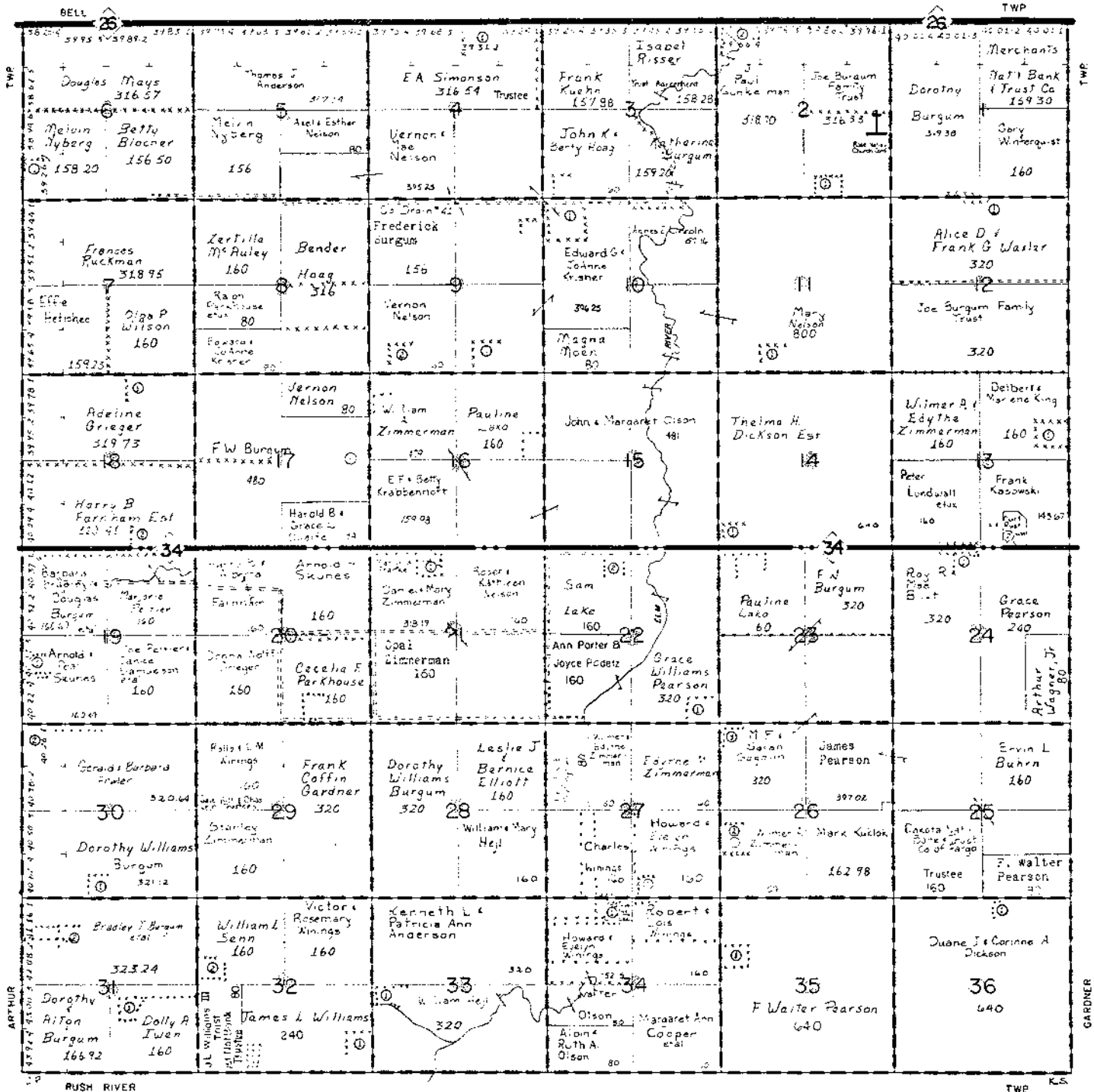


MAP OF GUNKEL

TOWNSHIP 142 N

RANGE 51 W

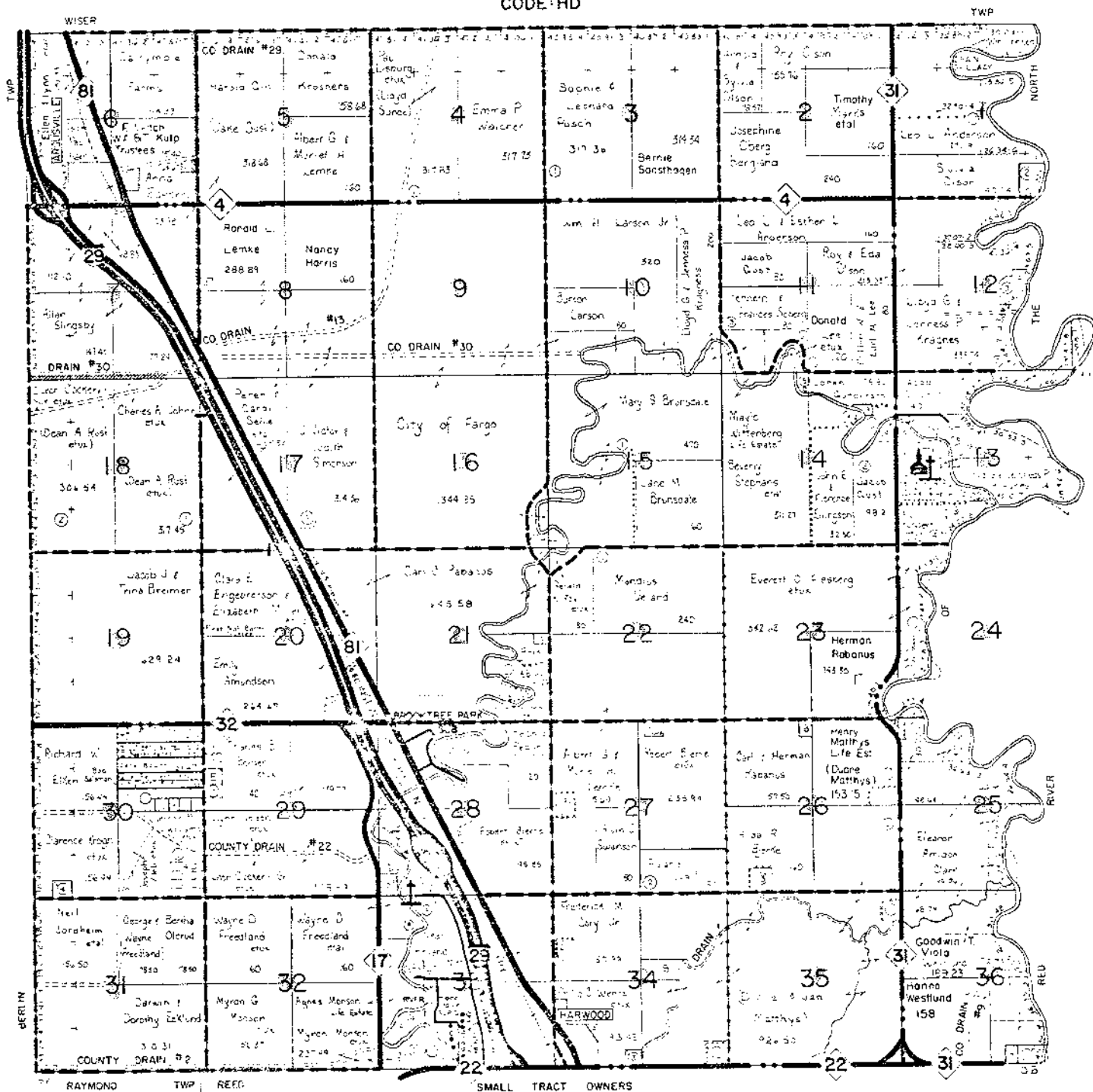
CODE: GU





RANGE 48 & 49 W

CODE: HD



SEE SMALL TRACT SECTION FOLLOWING TOWNSHIP MAPS

CASE



MAP OF HUNTER



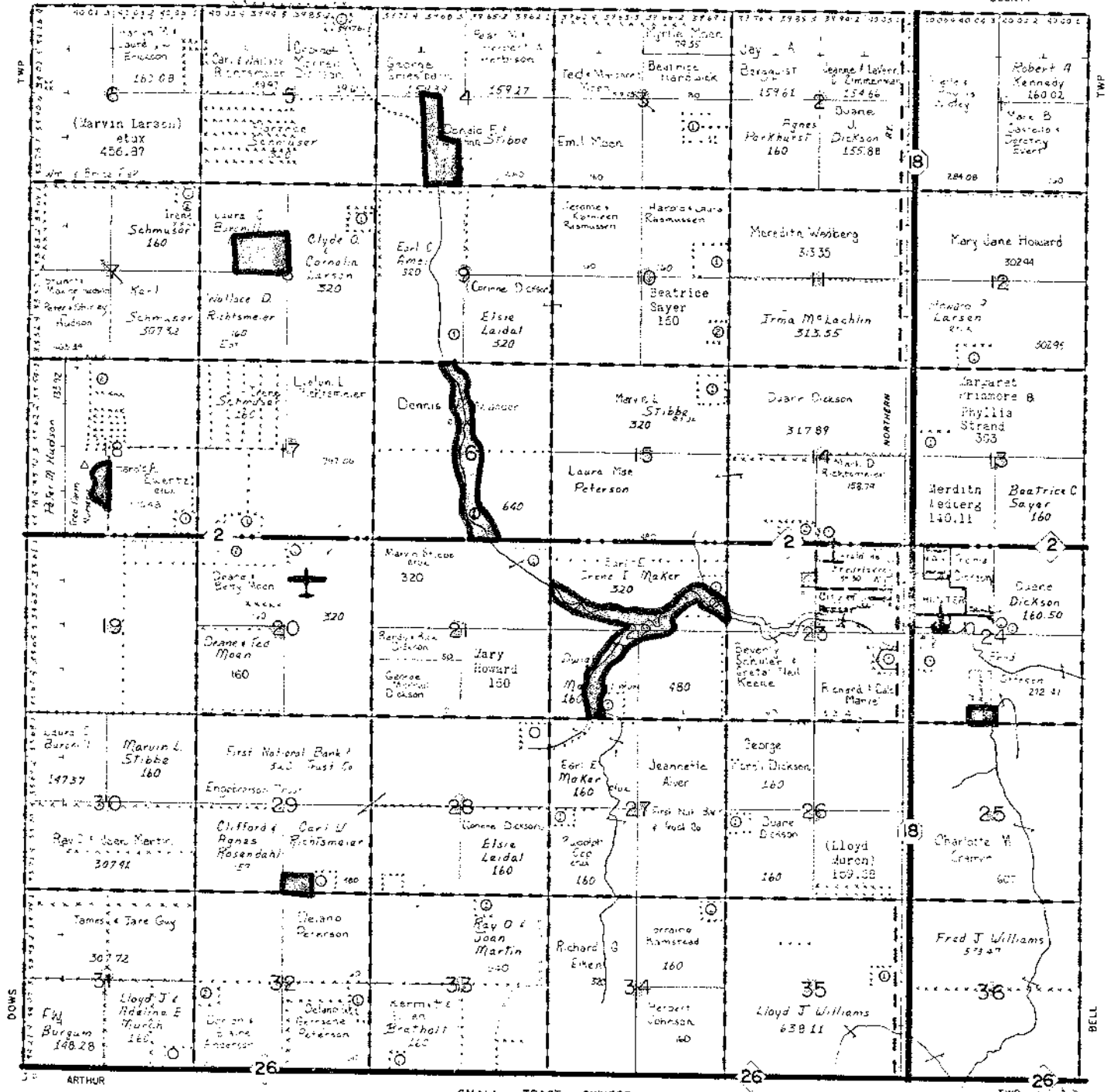
TOWNSHIP 143 N

RANGE 52 W

CODE : HU

TRAILL

COUNTY



SMALL TRACT OWNERS

SEE SMALL TRACT SECTION FOLLOWING TOWNSHIP MAPS



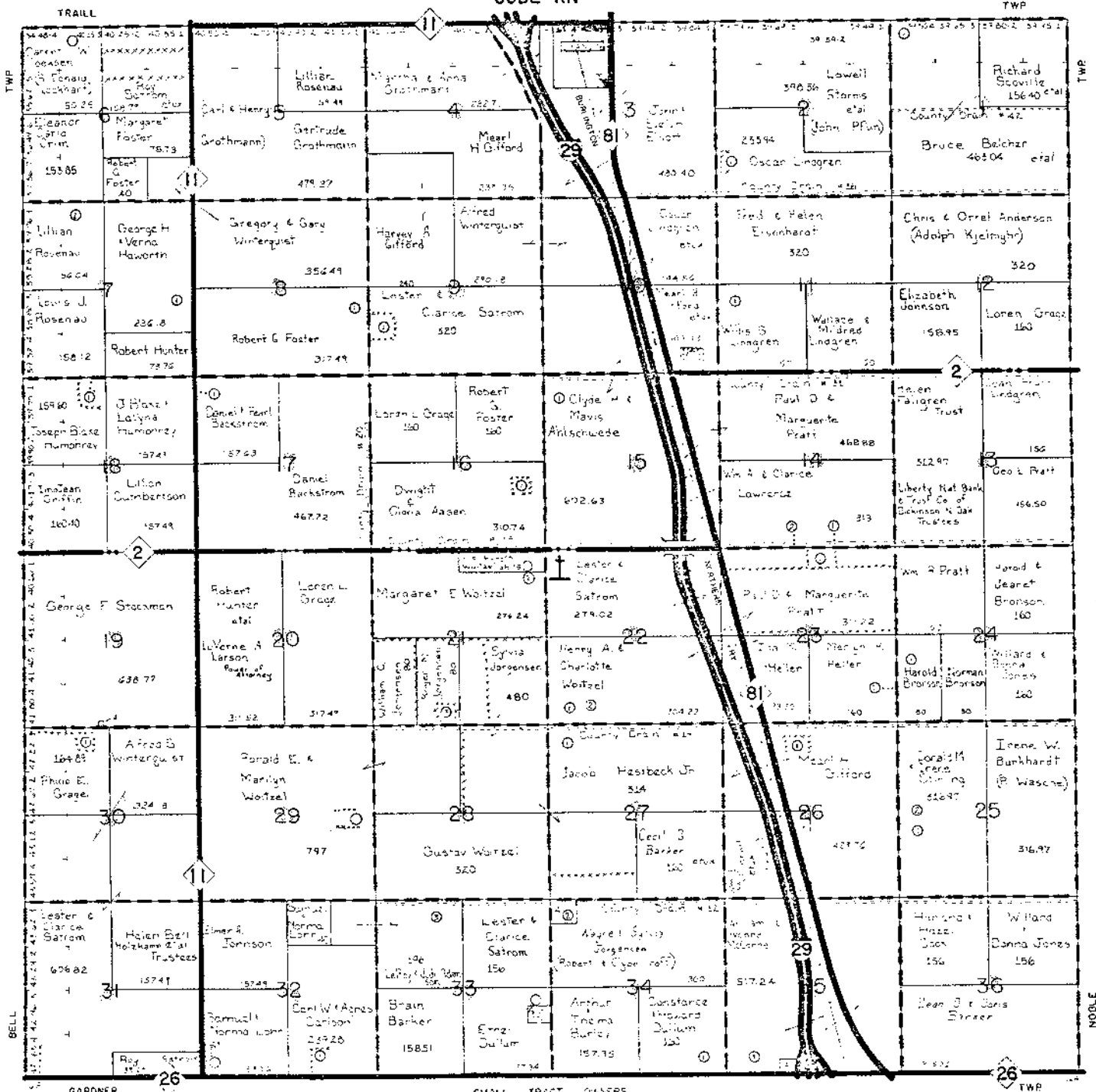
MAP OF KINYON



TOWNSHIP 143 N

RANGE 50 W

CODE: KN

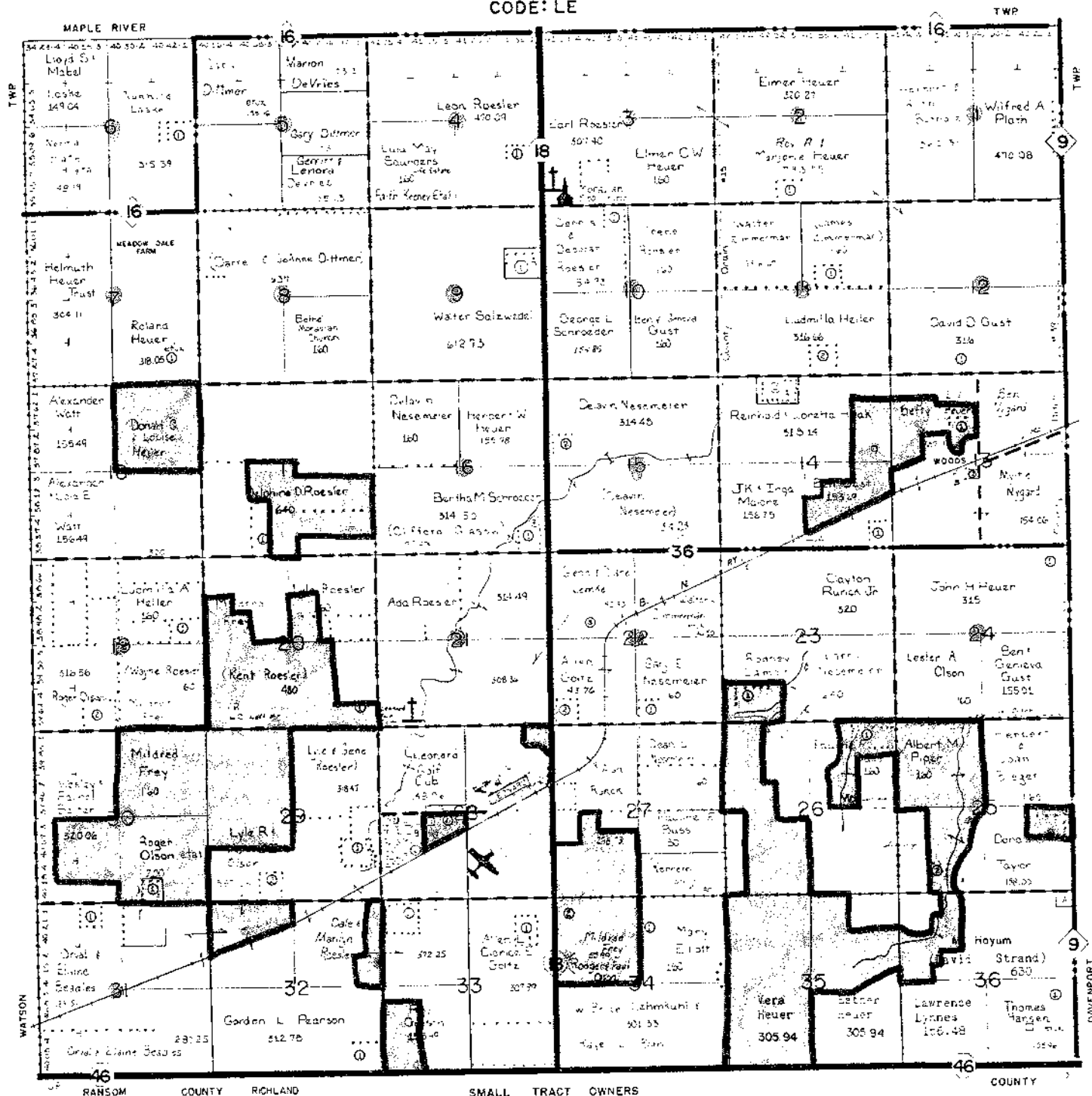


SEE SMALL TRACT SECTION FOLLOWING TOWNSHIP MAPS



RANGE 52 W

CODE: LE



SEE SMALL TRACT SECTION FOLLOWING TOWNSHIP MAPS



MAP OF

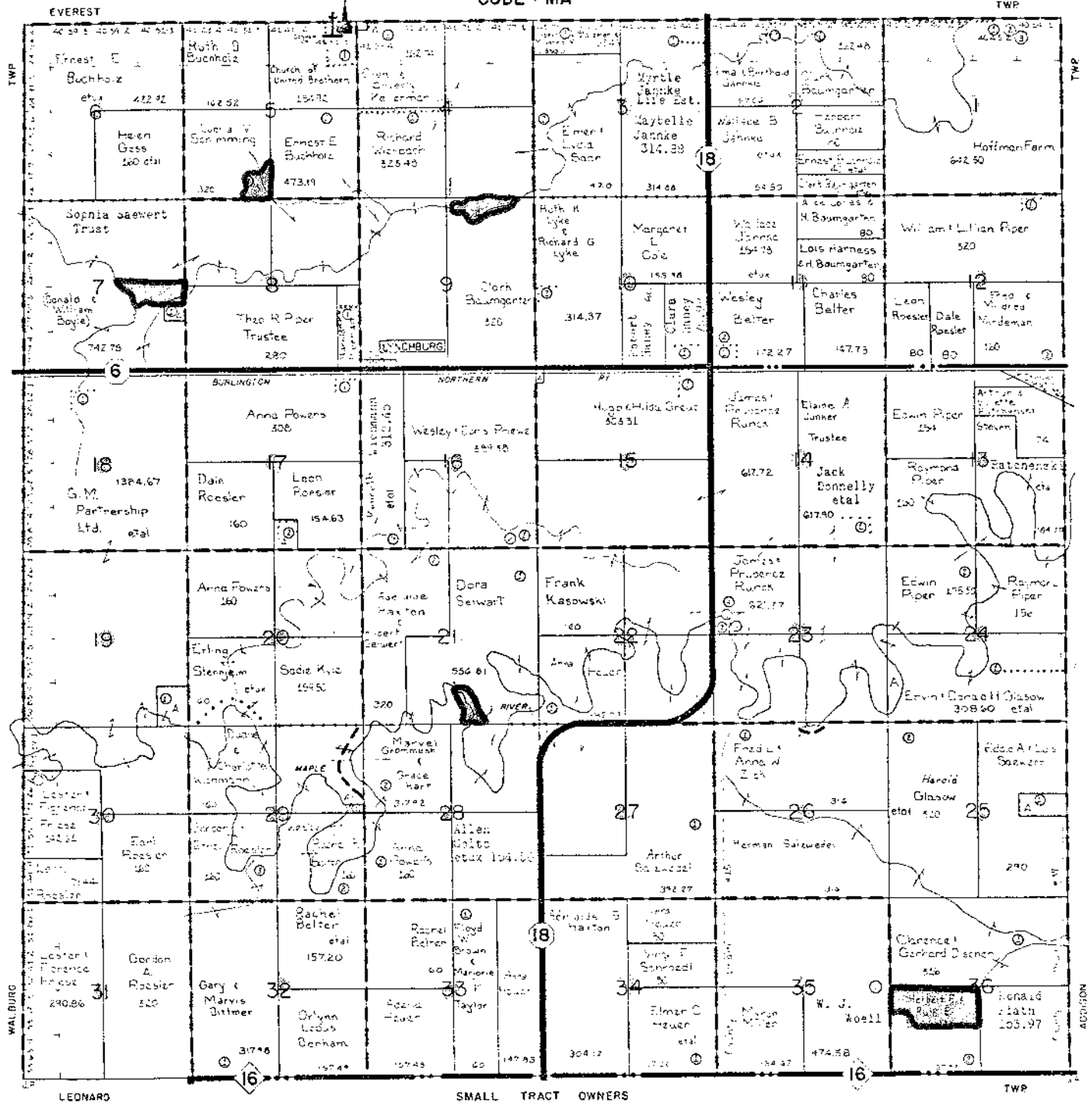
MAPLE RIVER

TOWNSHIP 138 N.

RANGE 52 W.



CODE : MA



SEE SMALL TRACT SECTION FOLLOWING TOWNSHIP MAPS



MAP OF

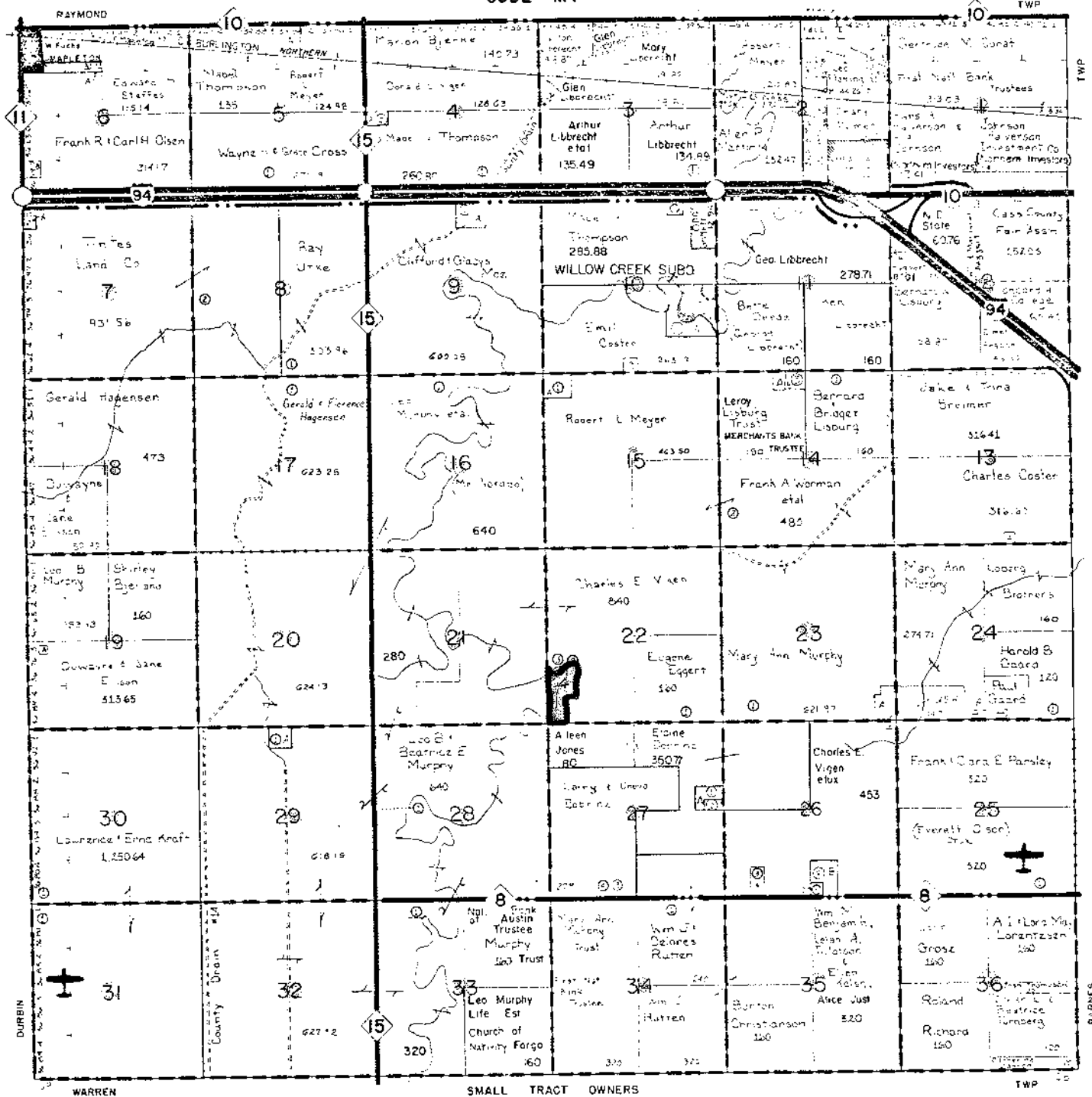
MAPLETON

TOWNSHIP 139 N

RANGE 50 W



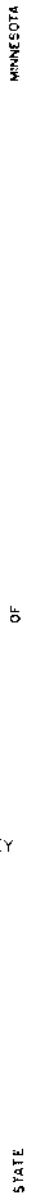
CODE: MT



SEE SMALL TRACT SECTION FOLLOWING TOWNSHIP MAPS



COUNTY

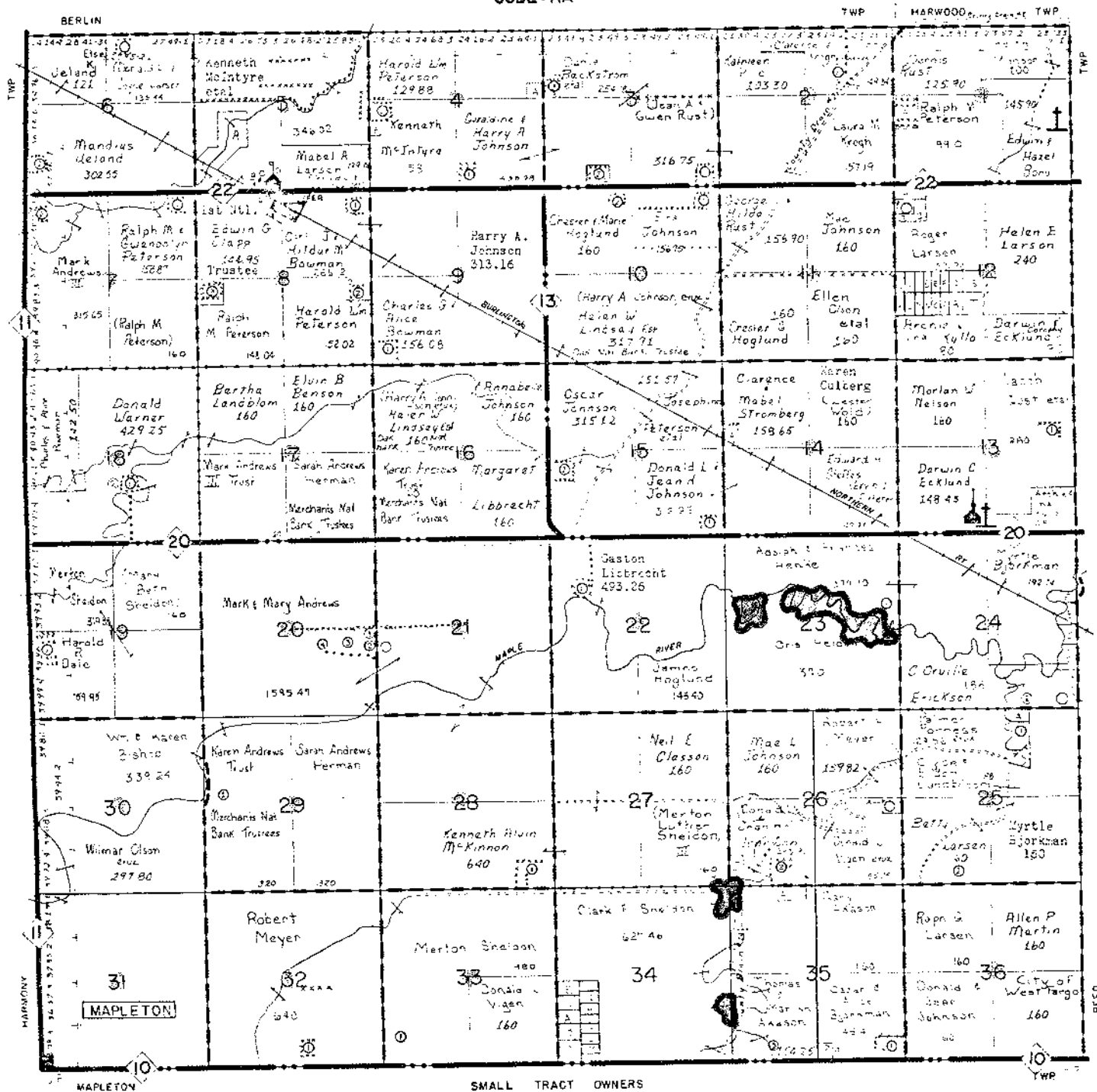


CASS



RANGE 50 W

CODE : RA



SEE SMALL TRACT SECTION FOLLOWING TOWNSHIP MAPS

REFERENCES

SEE SMALL TRACT SECTION FOLLOWING TOWNSHIP MAPS

FARGO

T. 140 N. R. 48 W.

CODE: FA

RANGE 49 W

CODE RE

TOWNSHIP 140 N 17 E

CASE

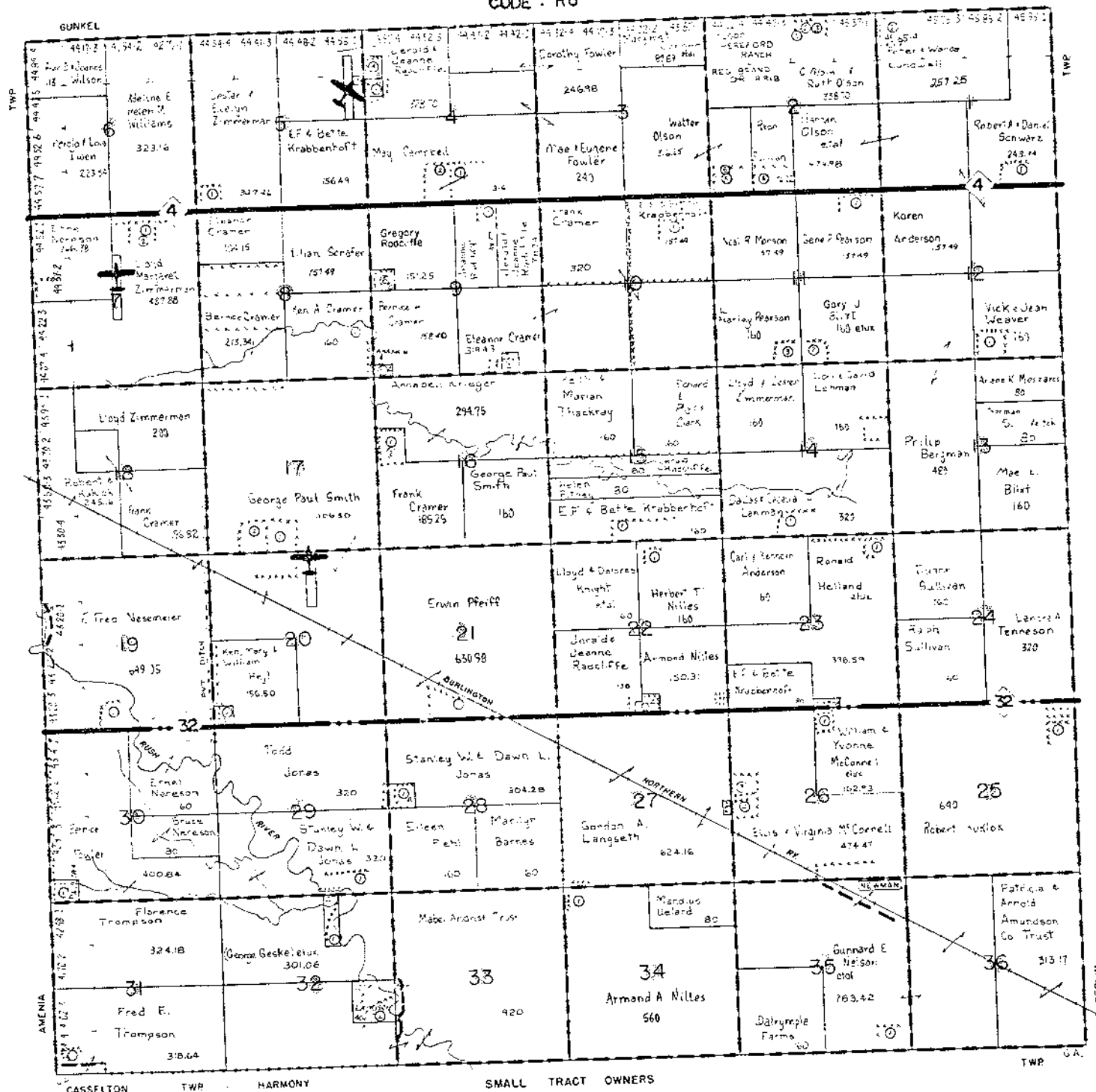
p. D-27



RANGE 51 W

CODE : RU

TWP



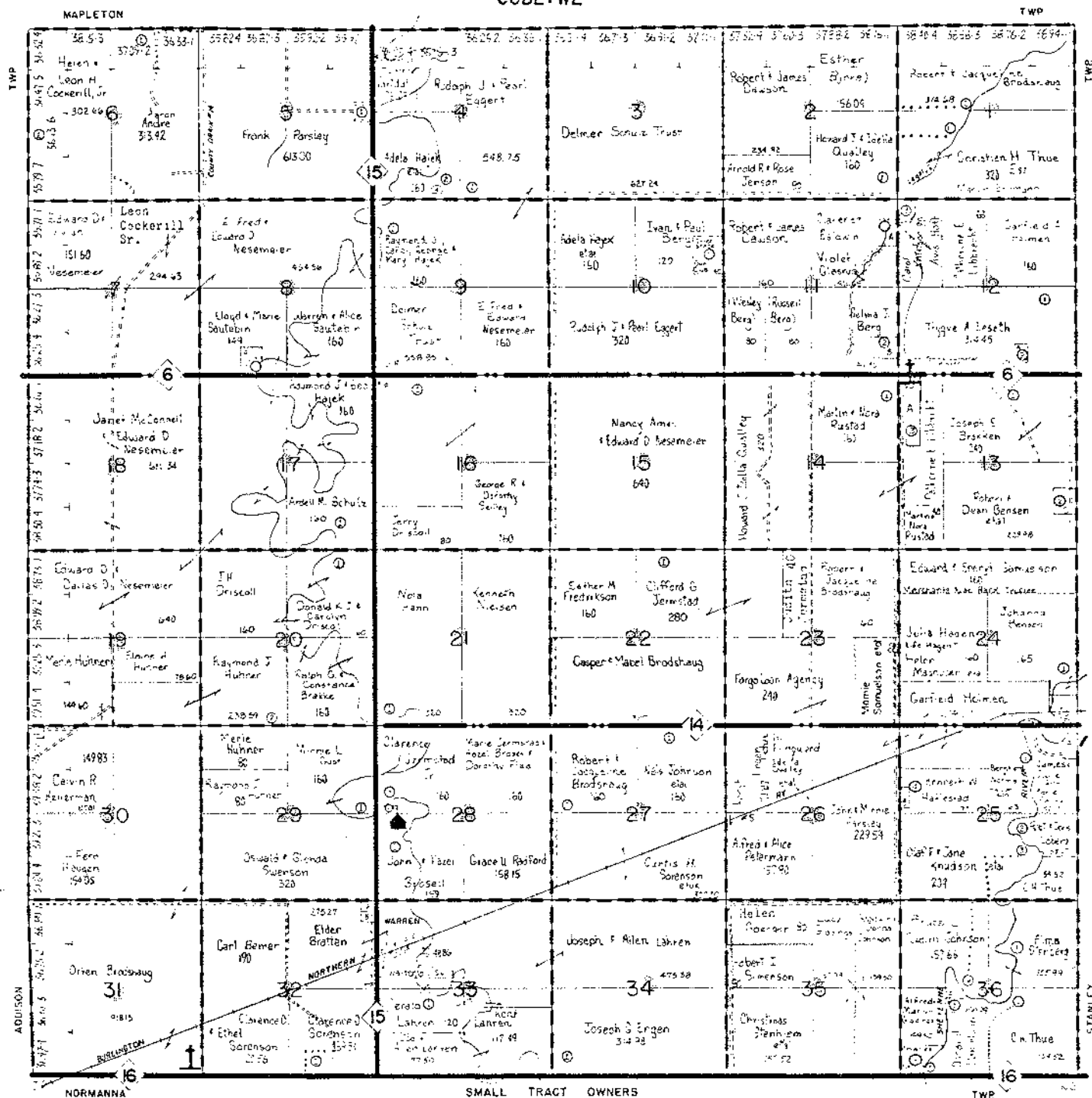
SEE SMALL TRACT SECTION FOLLOWING TOWNSHIP MAPS

Q A-53



RANGE 50 W

CODE: WE



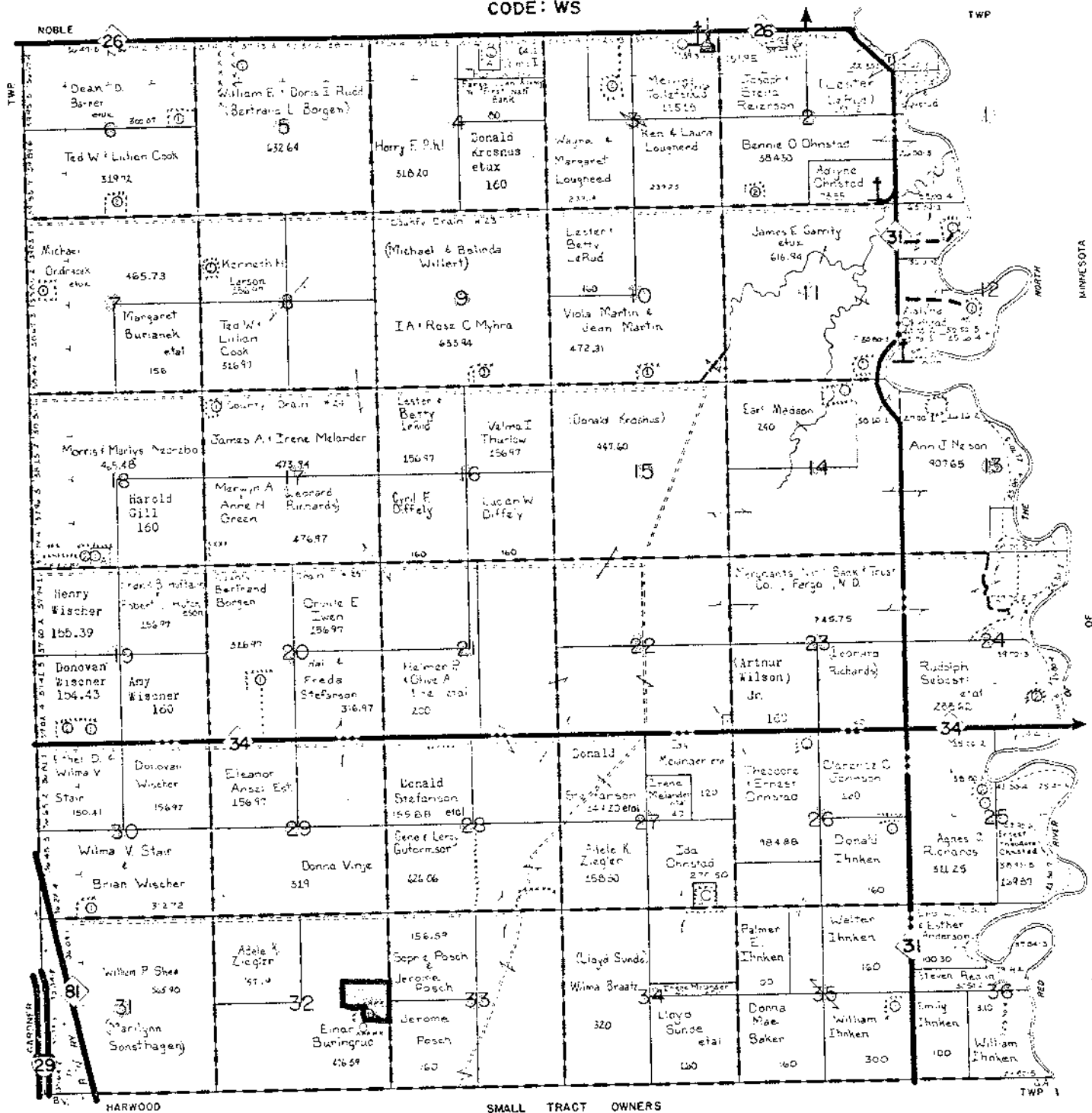
SEE SMALL TRACT SECTION FOLLOWING TOWNSHIP MAPS

CASS

TOWNSHIP 142 N

RANGE 49 W

CODE: WS



SMALL TRACT OWNERS

SEE SMALL TRACT SECTION FOLLOWING TOWNSHIP MAPS