

Minnesota Commercial Turtle Harvest



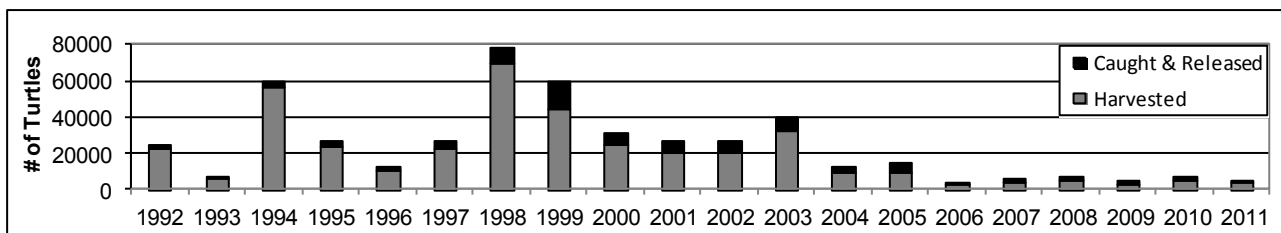
MINNESOTA DEPARTMENT OF NATURAL RESOURCES

In 2011, 27 Minnesotans were awarded commercial turtle harvest licenses. Of these, 15 (56%) reported harvesting turtles in 2011. 4,134 turtles (painted, snapping, and spiny softshell) were reported harvested, and 2,645 turtles were reported caught and released. This report also includes harvest numbers for the 2006-2010 seasons.

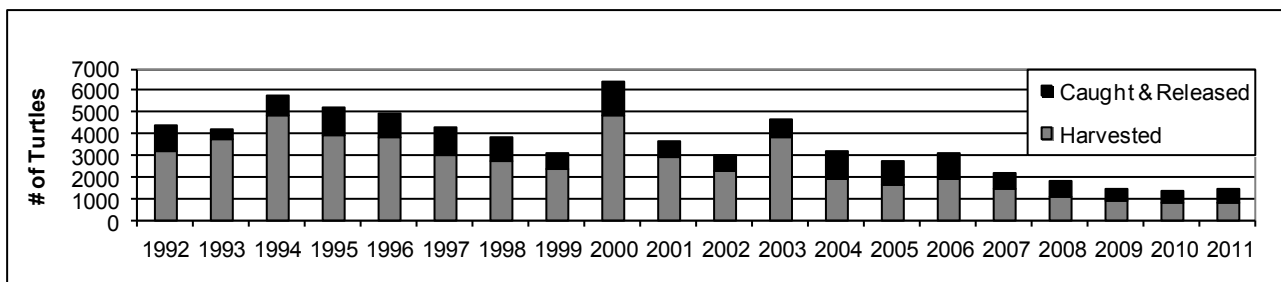
Summary of 2006-2011 commercial turtle harvest

Species	Harvested		Caught & Released		# of Harvesters		# of Counties	
	2006-2010 (average/yr)	2011	2006-2010 (average/yr)	2011	2006-2010 (average/yr)	2011	2006-2010 (average/yr)	2011
Painted (<i>Chrysemys picta</i>)	3,762	3,319	1,714	1,987	12	12	17	15
Snapping (<i>Chelydra serpentina</i>)	1,248	813	732	653	16	12	28	17
Spiny Softshell (<i>Apalone spinifera</i>)	61	2	107	5	4	1	9	2
Blanding's (<i>Emydoidea blandingii</i>)	0	0	1	0	0	0	1	0
TOTAL	5,083	4,134	2,554	2,645	18 <i>(duplicates assessed)</i>	15 <i>(duplicates assessed)</i>	31 <i>(duplicates assessed)</i>	21 <i>(duplicates assessed)</i>

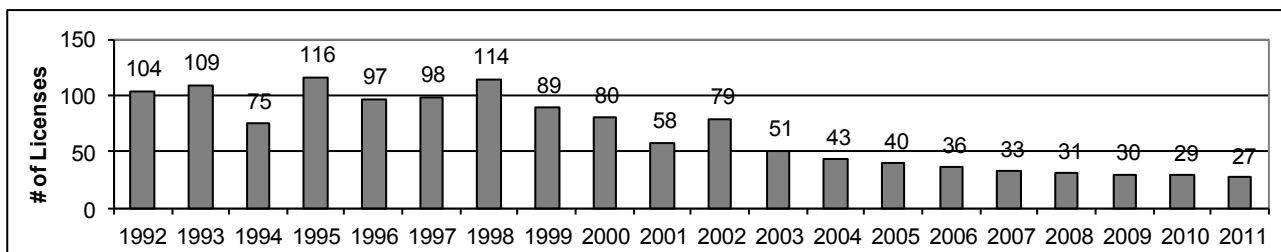
Painted turtle harvest 1992—2011



Snapping turtle harvest 1992—2011



Number of commercial licenses issued 1992—2011

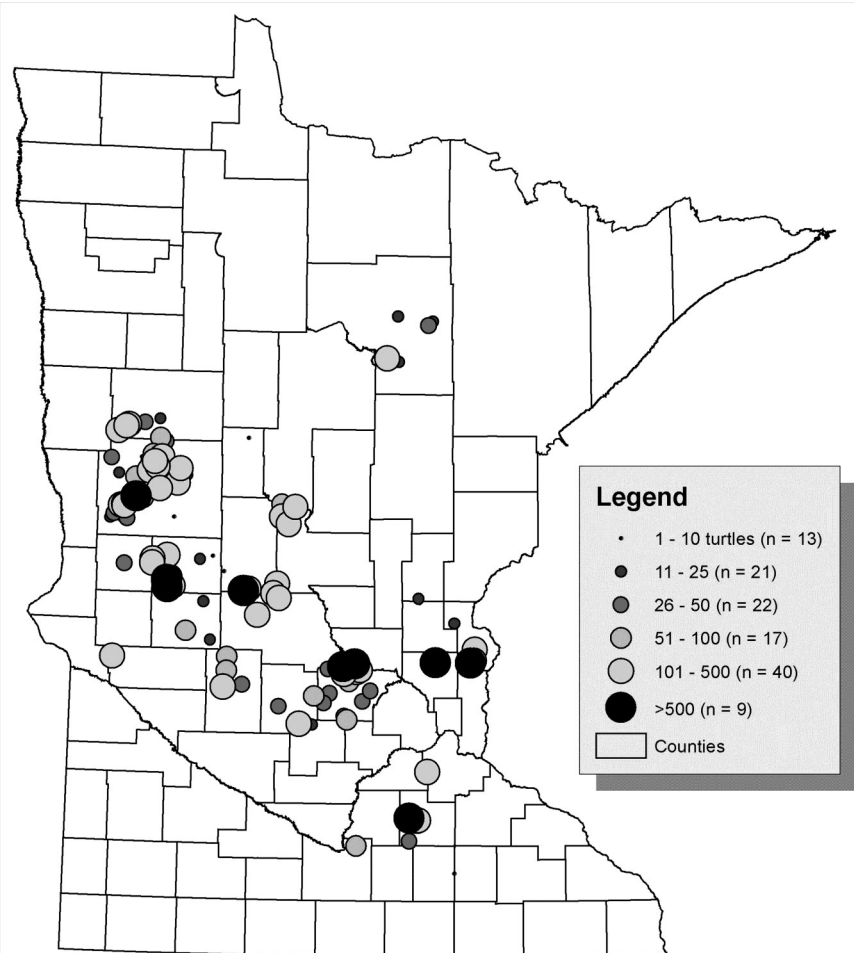


Note: except for renewals, commercial licenses stopped being issued in 2002.

Painted Turtles: 2006-2010 harvest

Overview

22 of the 36 (61%) licensed harvesters reported collecting painted turtles (*Chrysemys picta*), the species with highest harvest numbers each year from 2006 to 2010 by commercial licensees. 18,810 painted turtles were reported to have been harvested across this five-year period (mean = 3,762/yr), a substantial reduction from 2005 harvest levels. An additional 8,548 turtles were caught and released (mean = 1,714/yr). The painted turtle catch per unit effort (CPUE) from 2006-2010 averaged 1.4 turtles per trap per day (based on floating traps only).



Painted Turtle Harvest by County

County	# Turtles	County	# Turtles
Anoka	730	Kandiyohi	536
Becker	935	McLeod	157
Blue Earth	100	Meeker	117
Cass	77	Morrison	1160
Chisago	1077	Otter Tail	3985
Dakota	166	Pope	102
Dodge	2	Rice	1276
Douglas	3272	Stearns	464
Grant	30	Steele	2
Isanti	4	Swift	175
Itasca	458	Todd	1475
Jackson	56	Wadena	1
Kanabec	15	Wright	2438

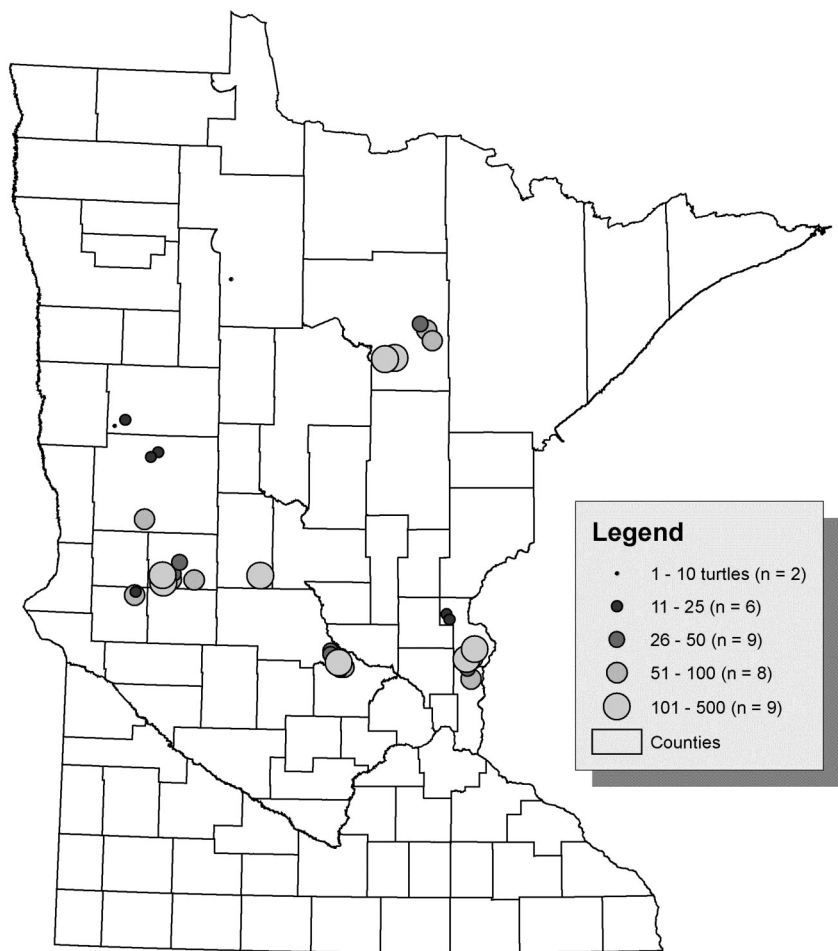
Painted Turtle Harvest by Gear

GEAR TYPE	# of Gear	# Turtles Harvested	% of Total
Floating Trap	1185	11512	61.2%
Submerged Trap	855	1738	9.2%
Hook	N/A	1177	6.3%
Hand	N/A	254	1.4%
Other	362	3619	19.2%
Unknown	N/A	510	2.7%
TOTALS	2402	18810	

Painted Turtles: 2011 harvest

Overview

12 of the 27 (44%) licensed harvesters reported collecting painted turtles (*Chrysemys picta*), the species with highest numbers harvested by commercial licensees. 3,319 painted turtles were reported to have been harvested (a 12% decrease from the 2006-2010 average annual harvest of 3,762), and 1,987 were caught and released. The painted turtle catch per unit effort (CPUE) in 2011 averaged 0.9 turtles per trap per day (based only on floating traps).



Painted Turtle Harvest by County

County	# Turtles	County	# Turtles
Becker	33	Stearns	67
Beltrami	6	Stevens	299
Chisago	479	Todd	331
Douglas	1023	Washington	99
Itasca	417	Wright	476
Otter Tail	89		

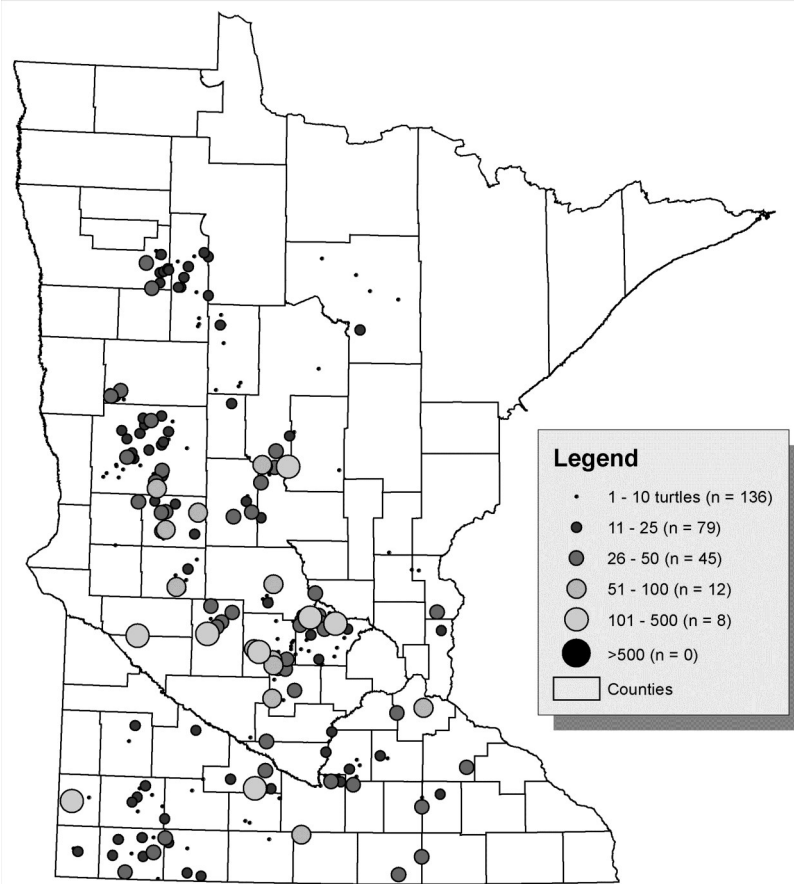
Painted Turtle Harvest by Gear

GEAR TYPE	# of Gear	# Turtles Harvested	% of Total
Floating Trap	487	3039	91.6%
Submerged Trap	26	3	0.0%
Hook	N/A	69	2.1%
Hand	0	0	0
Other	7	208	6.3%
Unknown	0	0	0
TOTALS	520	3319	

Snapping Turtles: 2006-2010 harvest

Overview

27 of the 36 (75%) licensed harvesters reported collecting snapping turtles (*Chelydra serpentina*), the species with the second highest numbers harvested each year from 2006 to 2010 by commercial licensees. 6,239 snapping turtles were reported to have been harvested over this five-year period (mean = 1,248/yr), a substantial reduction from 2005 harvest levels. An additional 3,662 turtles were caught and released (mean = 732/yr). The snapping turtle catch per unit effort (CPUE) from 2006-2010 averaged 0.7 turtles per trap per day (based on submerged traps only).



Snapping Turtle Harvest by Gear

GEAR TYPE	# of Gear	# Turtles Harvested	% of Total
Floating Trap	279	254	4.1%
Submerged Trap	3519	5423	86.9%
Hook	N/A	439	7.0%
Hand	N/A	2	0.0%
Other	117	81	1.3%
Unknown	N/A	40	0.6%
TOTALS	3915	6239	

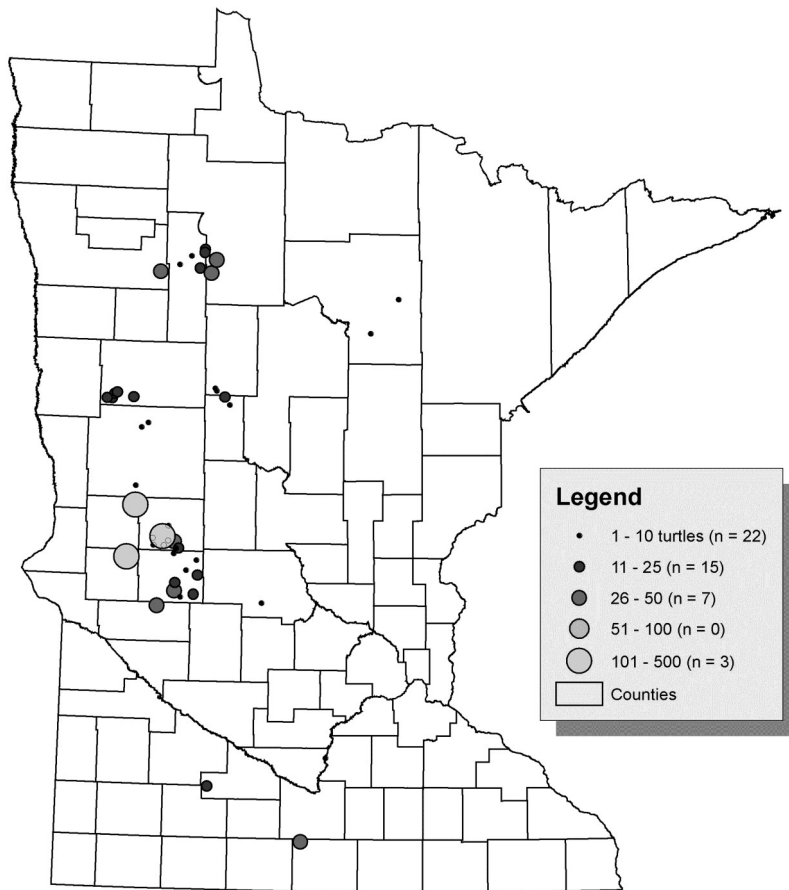
Snapping Turtle Harvest by County

County	# Turtles	County	# Turtles	County	# Turtles
Aitkin	21	Hubbard	49	Pope	225
Becker	129	Isanti	4	Redwood	43
Beltrami	27	Itasca	52	Renville	86
Blue Earth	65	Jackson	135	Rice	23
Brown	193	Kanabec	2	Rock	59
Cass	263	Kandiyohi	271	Sherburne	35
Chippewa	69	Le Sueur	50	Sibley	74
Chisago	36	Lyon	40	Stearns	173
Clearwater	135	Martin	7	Steele	18
Cottonwood	43	McLeod	338	Stevens	179
Crow Wing	6	Meeker	425	Swift	63
Dakota	101	Morrison	126	Todd	121
Dodge	38	Mower	27	Wadena	19
Douglas	348	Murray	92	Waseca	28
Faribault	84	Nobles	172	Washington	22
Freeborn	47	Otter Tail	642	Watsonwan	25
Goodhue	34	Pipestone	175	Wright	538
Grant	77	Polk	185		

Snapping Turtles: 2011 harvest

Overview

12 of the 27 (44%) licensed harvesters reported collecting snapping turtles (*Chelydra serpentina*), the species with the second highest numbers harvested by commercial licensees. 813 snapping turtles were reported to have been harvested (a 35% decrease from the average 2006-2010 harvest of 1,248), and 653 were caught and released. The snapping turtle catch per unit effort (CPUE) in 2011 averaged 0.8 turtles per trap per day (based only on submerged traps).



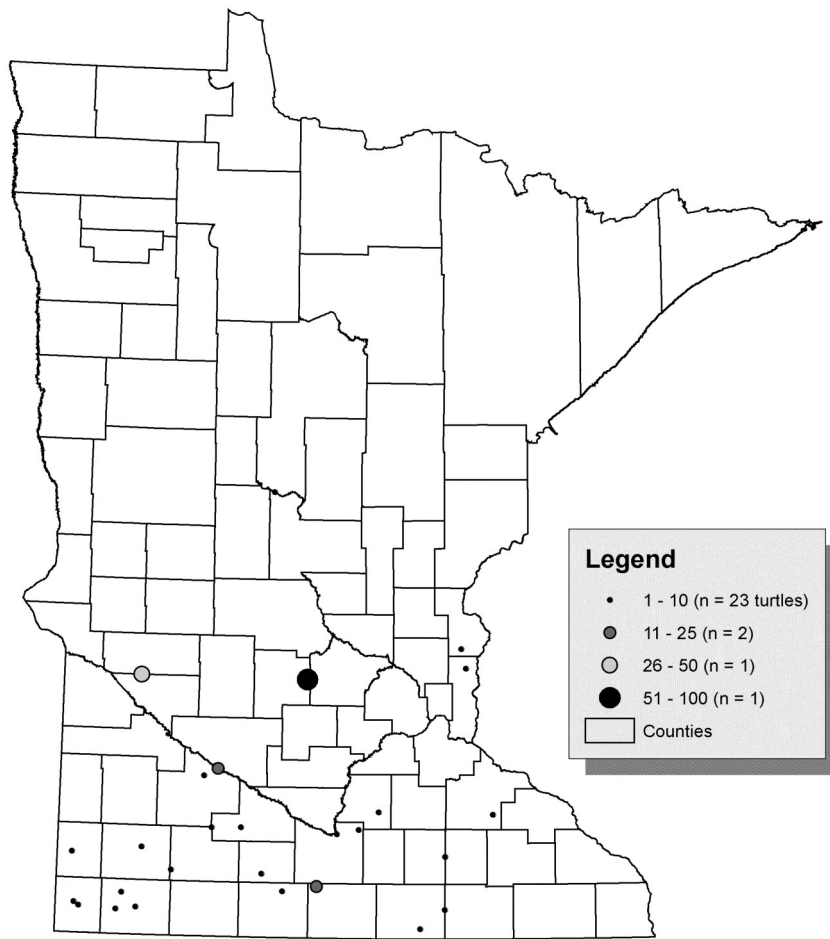
Snapping Turtle Harvest by Gear

GEAR TYPE	# of Gear	# Turtles Harvested	% of Total
Floating Trap	53	157	19.3%
Submerged Trap	308	558	68.6%
Hook	N/A	85	10.5%
Hand	0	0	0
Other	7	13	1.6%
Unknown	0	0	0
TOTALS	368	813	

Snapping Turtle Harvest by County

County	# Turtles	County	# Turtles
Becker	74	Le Sueur	9
Beltrami	65	Otter Tail	15
Brown	16	Polk	28
Clearwater	62	Pope	109
Douglas	128	Stearns	2
Faribault	38	Stevens	69
Grant	118	Swift	48
Hubbard	6	Wadena	21
Itasca	5		

Spiny Softshell Turtles: 2006-2010 harvest



Overview

13 of the 36 (36%) licensed harvesters reported collecting spiny softshell turtles (*Apalone spinifera*), the species with the lowest numbers harvested each year from 2006 to 2010 by commercial licensees. 307 spiny softshell turtles were reported to have been harvested across this five-year period (mean = 61/yr), a substantial reduction from 2005 harvest levels. An additional 537 turtles were caught and released (mean = 107/yr). The spiny softshell turtle catch per unit effort (CPUE) from 2006-2010 averaged 0.4 turtles per trap per day (based only on submerged traps).

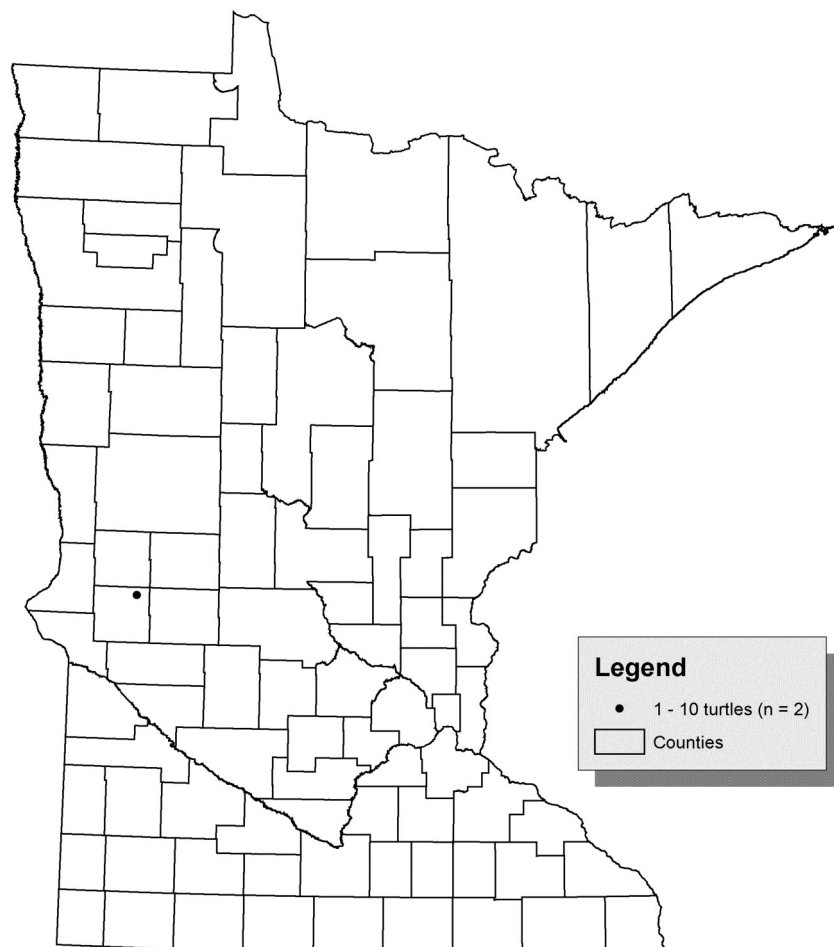
Spiny Softshell Turtle Harvest by County

County	# Turtles	County	# Turtles
Blue Earth	3	Murray	5
Brown	7	Nobles	4
Cass	4	Pipestone	11
Chippewa	20	Pope	13
Chisago	8	Redwood	9
Cottonwood	2	Renville	7
Faribault	21	Rock	3
Freeborn	12	Steele	1
Goodhue	2	Stevens	48
Le Seuer	3	Swift	13
Martin	3	Todd	2
McLeod	1	Washington	7
Meeker	82	Watonwan	2
Mower	3	Wright	11

Spiny Softshell Turtle Harvest by Gear

GEAR TYPE	# of Gear	# Turtles Harvested	% of Total
Floating Trap	18	3	1.0%
Submerged Trap	932	304	99.0%
Hook	0	0	0
Hand	0	0	0
Other	0	0	0
Unknown	0	0	0
TOTALS	950	307	

Spiny Softshell Turtles: 2011 harvest



Overview

2 of the 27 (7%) licensed harvesters reported collecting spiny softshell turtles (*Apalone spinifera*), the species with the lowest numbers harvested by commercial licensees. 2 spiny softshell turtles were reported to have been harvested (a 97% decrease from the average 2006-2010 harvest of 61), and 5 were caught and released. The spiny softshell turtle catch per unit effort (CPUE) in 2011 averaged 0.1 turtles per trap per day of effort.

Spiny Softshell Turtle Harvest by County

County	# Turtles
Stevens	2



For more information about this report, please contact:

Krista Larson, Nongame Research Biologist
MN DNR, Div. of Ecol. and Water Resources
500 Lafayette Road, Box 25
St. Paul, Minnesota 55155
Phone: (651) 259-5120
Email: krista.larson@state.mn.us

For information about turtle harvest licensing, please contact:

Neil Vanderbosch, Commercial Fishing Program Coordinator
MN DNR, Div. of Fish and Wildlife
500 Lafayette Road
St. Paul, Minnesota 55155
Phone: (651) 259-5178
Email: neil.vanderbosch@state.mn.us

Report Author: Krista Larson

Spiny Softshell Turtle Harvest by Gear

GEAR TYPE	# of Gear	# Turtles Harvested	% of Total
Floating Trap	0	0	0
Submerged Trap	29	2	100.0%
Hook	0	0	0
Hand	0	0	0
Other	0	0	0
Unknown	0	0	0
TOTALS	29	2	