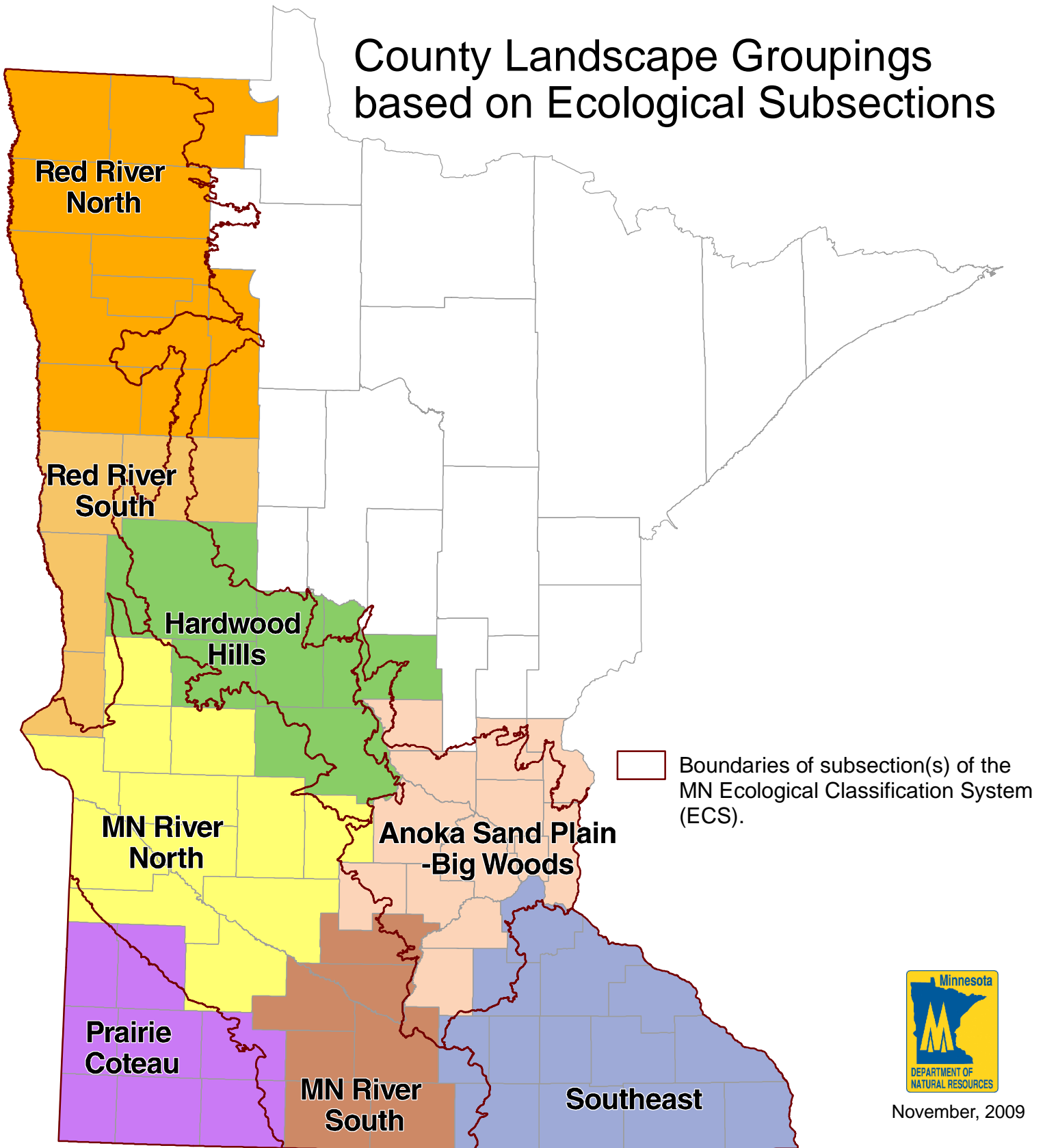


County Landscape Groupings based on Ecological Subsections



November, 2009

The County Landscape Groupings are based on Minnesota DNR's Ecological Classification System which is derived from associations of biotic and environmental factors, including climate, geology, topography, soils, hydrology and vegetation. These same biotic and environmental factors drive local plant adaptation and can lead to genetically differentiated populations of prairie species. For this reason the County Landscape Groupings can serve as a basis for delineating broad "ecotype regions" with similar native plant populations.