

## FFs68 Southern Floodplain Forest Pollinator Resources

Deciduous riparian forests on sandy or silty alluvium on low, level, annually flooded sites along medium and large rivers in the southern half of Minnesota. Community is characterized by evidence of recent flooding such as rows and piles of debris, ice scars on trees, high-water channels, and freshly deposited silt and sand.

Examples of insect pollinators (and their associated host plants in parentheses) that use FFs68 include:

**Bees:**

*Megachile campanulae* (*Campanula americana*)

*Protandrena albitarsis* (*Rudbeckia*)

*Melissodes dentiventris* (*Symphyotrichum*)

*Andrena mariae* (*Salix*)

**Butterflies:**

*Aglais milberti* (*Laportea canadensis*, *Urtica dioica*)

*Satyrium acadica* (*Salix*)

*Argynnis cybele* (*Viola*)

**Moths:**

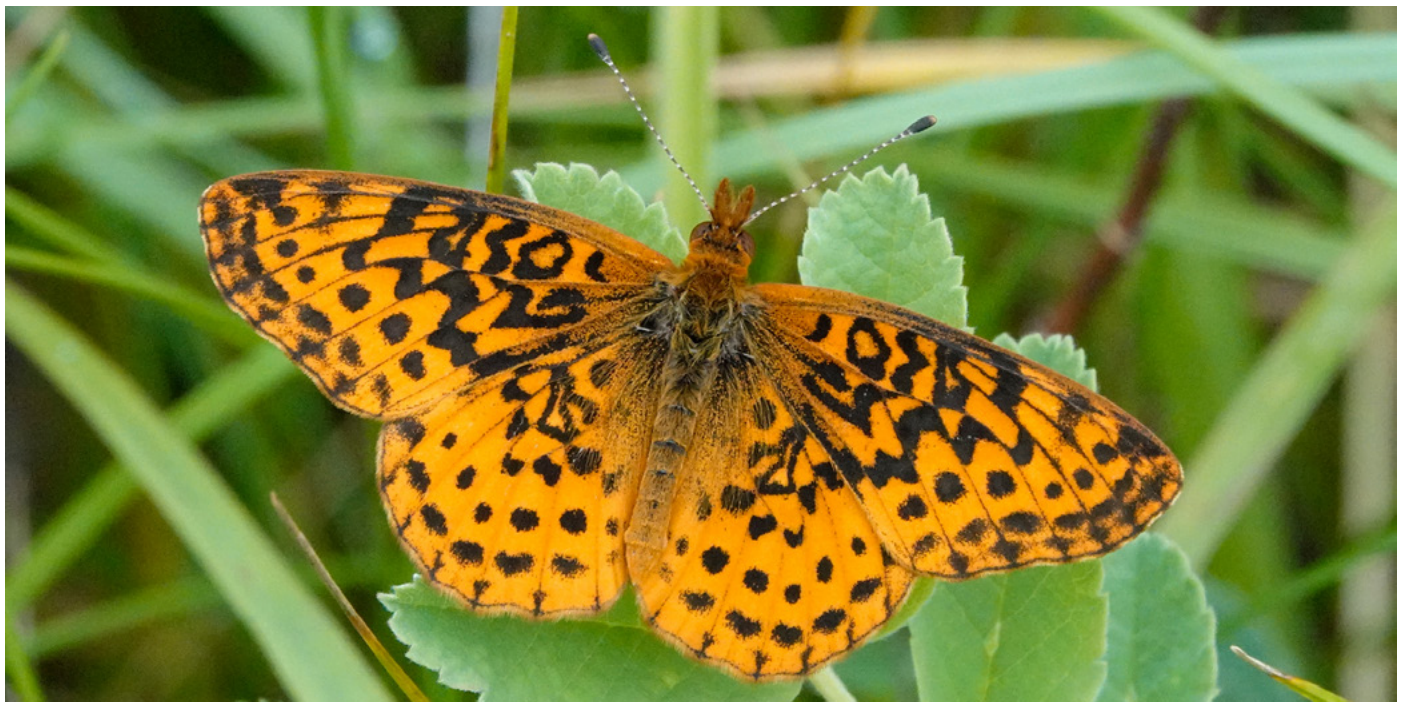
*Ceratonia amyntor* (*Ulmus americana*)

*Caloptilia fraxinella* (*Fraxinus pennsylvanica*)

*Schinia trifascia* (*Symphyotrichum lanceolatum*)



*Megachile campanulae* (bellflower resin bee) uses *Campanula* (harebell) species as a host plant.  
Photo: Heather Holm

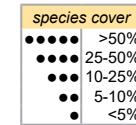


*Aglais milberti* (Milbert's tortoiseshell) uses *Laportea canadensis* (Canada nettle) and *Urtica dioica* (stinging nettle) as host plants. Photo: Bob Dunlap

# FFs68 Southern Floodplain Forest

## Pollinator Resources Table

FFs68 Class Factsheet. Based on 27 plots. November 2024



Forbs	species frequency in NPC (%)	species cover (when present)	Compatibility	Longevity	Clonality	Principal Pollen Vector	Pollinator requirements	Pollination Index
Wood nettle ( <i>Laportea canadensis</i> )	93	●●●●	UNK	Perennial	Present	wind	Generalist	0
Ontario aster ( <i>Aster ontarionis</i> )	56	●	UNK	Perennial	Present	insects	Generalist	3
Mad dog skullcap ( <i>Scutellaria lateriflora</i> )	56	●	SC	Perennial	Present	insects	Somewhat specific insect	3
Clearweed ( <i>Pilea</i> spp.)	52	●●●	sometimes D	Annual	Absent	wind	Generalist	0
Bur marigold and Beggarticks ( <i>Bidens</i> spp.)	44	●	Varies	Varies	Varies	insects	Generalist	Varies
Touch-me-not ( <i>Impatiens</i> spp.)	41	●	SI/SC	Annual	Absent	insects	Somewhat specific insect	6
Tall coneflower ( <i>Rudbeckia laciniata</i> )	41	●●	SC	Perennial	Present	insects	Generalist	2
Stinging nettle ( <i>Urtica dioica</i> )	37	●	D	Perennial	Present	wind	Generalist	0
Narrow-leaved hedge nettle ( <i>Stachys tenuifolia</i> )	33	●	SC	Perennial	Present	insects	Somewhat specific insect	3
Honewort ( <i>Cryptotaenia canadensis</i> )	26	●	SC	Perennial	Present	insects	Generalist	2
False nettle ( <i>Boehmeria cylindrica</i> )	26	●●	D	Perennial	Present	wind	Generalist	0
Wild cucumber ( <i>Echinocystis lobata</i> )	19	●	UNK	Annual	Absent	insects	Generalist	5
Nodding or Virginia stickseed ( <i>Hackelia deflexa</i> or <i>H. virginiana</i> )	19	●	UNK	Varies	Absent	insects	Generalist	5
Northern bugleweed ( <i>Lycopus uniflorus</i> )	19	●	SC	Perennial	Weakly	insects	Generalist	2
Side-flowering aster ( <i>Aster lateriflorus</i> )	15	●	SI	Perennial	Present	insects	Generalist	4
Dodder ( <i>Cuscuta</i> spp.)	15	●	Varies	Varies	Absent	insects	Generalist	Varies
Tall bellflower ( <i>Campanula americana</i> )	15	●	SC	Annual or biennial	Absent	insects	Somewhat specific insect	5
Virginia knotweed ( <i>Polygonum virginianum</i> )	15	●●	UNK	Perennial	Present	insects	Generalist	3
Germander ( <i>Teucrium canadense</i> )	15	●	SC	Perennial	Present	insects	Somewhat specific insect	3
Bur cucumber ( <i>Sicyos angulatus</i> )	15	●●	SI	Annual	Absent	insects	Generalist	6
Woundwort ( <i>Stachys palustris</i> )	15	●	SC	Perennial	Present	insects	Somewhat specific insect	3
Cut-leaved bugleweed ( <i>Lycopus americanus</i> )	15	●	SC	Perennial	Weakly	insects	Generalist	2
Eastern panicled aster ( <i>Aster lanceolatus</i> )	11	●●●●	SI	Perennial	Present	insects	Generalist	4
Green dragon ( <i>Arisaema dracontium</i> )	11	●	SI	Perennial	Present	insects	Early spring insect, Somewhat specific insect	5
White snakeroot ( <i>Eupatorium rugosum</i> )	11	●	UNK	Perennial	Present	insects	Generalist	3
Stemless blue violets ( <i>Viola sororia</i> and similar <i>Viola</i> spp.)	11	●	Varies	Perennial	Present	insects	Varies	Varies
Erect, Smooth, or Illinois carrion-flower ( <i>Smilax</i> spp.)*	11	●	D	Perennial	Present	insects	Somewhat specific insect	5
Common mint ( <i>Mentha arvensis</i> )	11	●	SC	Perennial	Present	insects	Generalist	2
Three-seeded mercury ( <i>Acalypha rhomboidea</i> )	11	●	UNK	Annual	Absent	wind	Generalist	0
Southern blue flag ( <i>Iris virginica</i> )	11	●	UNK	Perennial	Present	insects	Somewhat specific insect	4
<b>Grasses and Sedges</b>								
Virginia wild rye ( <i>Elymus virginicus</i> )	52	●●	SC	Perennial	Absent	wind	Generalist	0
White grass ( <i>Leersia virginica</i> )	44	●●●	UNK	Perennial	Present	wind	Generalist	0
Rice cut grass ( <i>Leersia oryzoides</i> )	30	●●	SC	Perennial	Present	wind	Generalist	0
Hop umbrella sedge ( <i>Carex lupulina</i> )	22	●●	UNK	Perennial	Present	wind	Generalist	0
Cattail sedge ( <i>Carex typhina</i> )	15	●●●	UNK	Perennial	Present	wind	Generalist	0
Ambiguous sedge ( <i>Carex amphibola</i> )	15	●●	UNK	Perennial	Present	wind	Generalist	0

Bladder sedge ( <i>Carex intumescens</i> )	11	•	UNK	Perennial	Present	wind	Generalist	0
Stout woodreed ( <i>Cinna arundinacea</i> )	11	•	UNK	Perennial	Weakly	wind	Generalist	0
Gray's sedge ( <i>Carex grayi</i> )	11	••	UNK	Perennial	Present	wind	Generalist	0
<b>Climbing Plants</b>								
Wild grape ( <i>Vitis riparia</i> )	81	•	D	Perennial	Present	insects	Generalist	4
Canada moonseed ( <i>Menispermum canadense</i> )	56	•	D	Perennial	Present	insects	Generalist	4
Greenbrier ( <i>Smilax tamnoides</i> )	33	•	D	Perennial	Present	insects	Somewhat specific insect	5
Virginia creeper ( <i>Parthenocissus</i> spp.)	26	•	SC	Perennial	Present	insects	Generalist	2
Climbing poison ivy ( <i>Toxicodendron rydbergii</i> )*	*	*	D	Perennial	Present	insects	Generalist	4
<b>Shrubs</b>								
Climbing poison ivy ( <i>Toxicodendron rydbergii</i> )	33	••	D	Perennial	Present	insects	Generalist	4
Black willow ( <i>Salix nigra</i> )	11	••••	D	Perennial	Present	insects	Early spring insect	5
<b>Tree Canopy</b>								
Silver maple	96	•••••	usually D	Perennial	Absent	insects, wind	Generalist	4
Green ash	67	•••	D	Perennial	UNK	wind	Generalist	0
American elm	41	••	Di	Perennial	Absent	wind	Generalist	0
Cottonwood	30	••••	D	Perennial	Present	wind	Generalist	0
Hackberry	22	•	SC	Perennial	Absent	wind	Generalist	0
Box elder	11	•••	D	Perennial	Absent	insects	Early spring insect	6
Swamp white oak	11	•••	SI	Perennial	Present	wind	Generalist	0
Red elm	-	-	Di	Perennial	Absent	wind	Generalist	0
<b>Tree Subcanopy</b>								
Silver maple	56	•••	usually D	Perennial	Absent	insects, wind	Generalist	4
Green ash	48	••	D	Perennial	UNK	wind	Generalist	0
American elm	56	•••	Di	Perennial	Absent	wind	Generalist	0
Cottonwood	-	-	D	Perennial	Present	wind	Generalist	0
Hackberry	19	••	SC	Perennial	Absent	wind	Generalist	0
Box elder	22	••	D	Perennial	Absent	insects	Early spring insect	6
Swamp white oak	-	-	SI	Perennial	Present	wind	Generalist	0
Red elm	-	-	Di	Perennial	Absent	wind	Generalist	0
<b>Tree Shrub Layer</b>								
Silver maple	63	•••	usually D	Perennial	Absent	insects, wind	Generalist	4
Green ash	74	•	D	Perennial	UNK	wind	Generalist	0
American elm	56	•	Di	Perennial	Absent	wind	Generalist	0
Cottonwood	-	-	D	Perennial	Present	wind	Generalist	0
Hackberry	33	•	SC	Perennial	Absent	wind	Generalist	0
Box elder	22	•	D	Perennial	Absent	insects	Early spring insect	6
Swamp white oak	-	-	SI	Perennial	Present	wind	Generalist	0
Red elm	26	•	Di	Perennial	Absent	wind	Generalist	0

\* Erect, Smooth, or Illinois carrion-flower (*Smilax ecirrata*, *S. herbacea*, or *S. illinoensis*); Climbing poison ivy is important in both the shrub and climbing plant layers, but all records from plot samples were universally assigned to the shrub layer.