

# CARLOS AVERY WMA VISITOR USE MAP

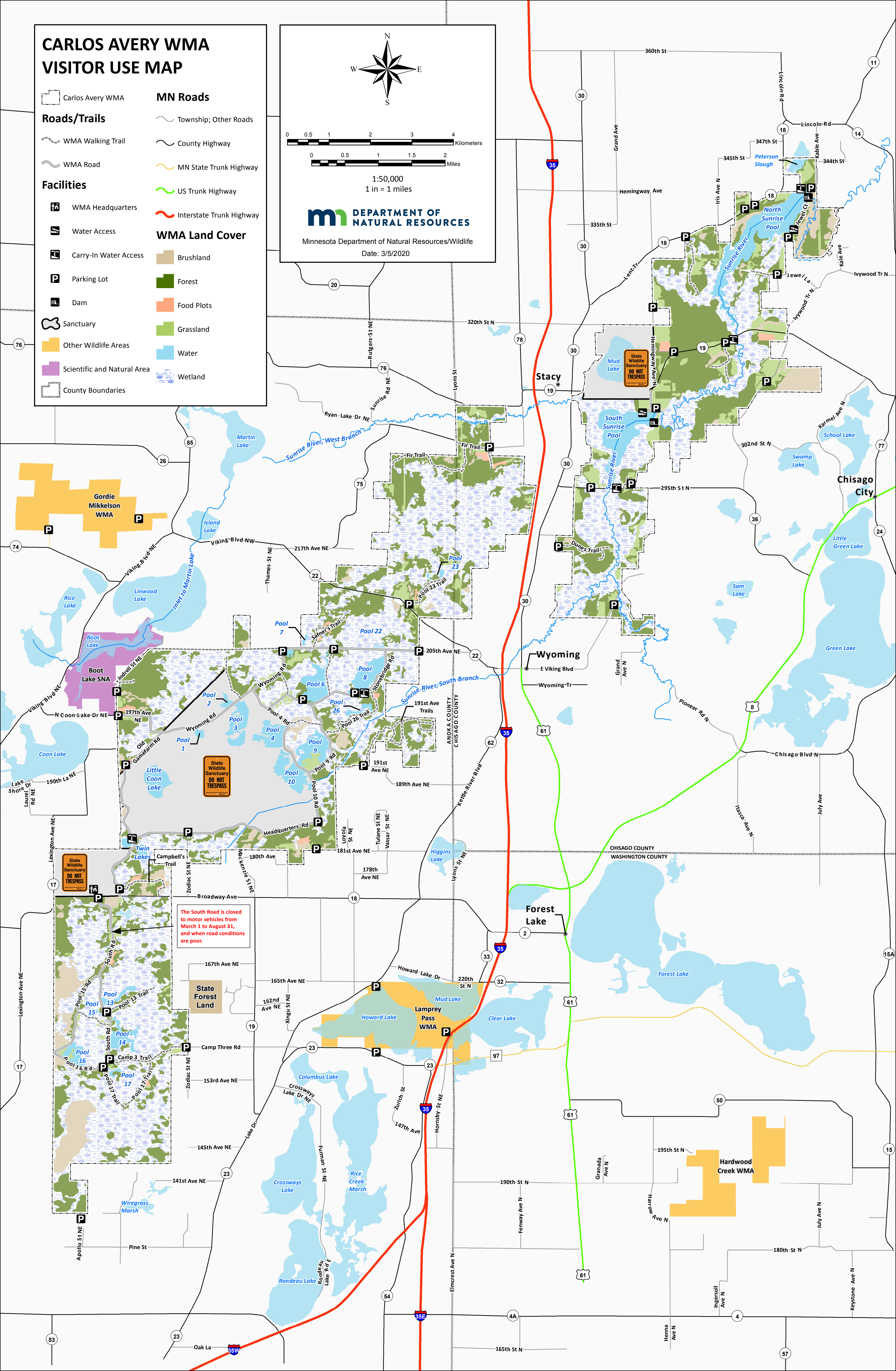
- Carlos Avery WMA
- Roads/Trails**
  - WMA Walking Trail
  - WMA Road
  - Township; Other Roads
  - County Highway
  - MN State Trunk Highway
  - US Trunk Highway
  - Interstate Trunk Highway
- Facilities**
  - WMA Headquarters
  - Water Access
  - Carry-In Water Access
  - Parking Lot
  - Dam
  - Sanctuary
  - Other Wildlife Areas
  - Scientific and Natural Area
  - County Boundaries
- WMA Land Cover**
  - Brushland
  - Forest
  - Food Plots
  - Grassland
  - Water
  - Wetland

0 0.5 1 2 3 4  
Kilometers

0 0.5 1 1.5 2  
Miles

1:50,000  
1 in = 1 miles

Minnesota Department of Natural Resources/Wildlife  
Date: 3/5/2020



The South Road is closed to motor vehicles from March 1 to August 31, and when road conditions are poor.

State Wildlife Sanctuary DO NOT TRESPASS

State Wildlife Sanctuary DO NOT TRESPASS

State Wildlife Sanctuary DO NOT TRESPASS