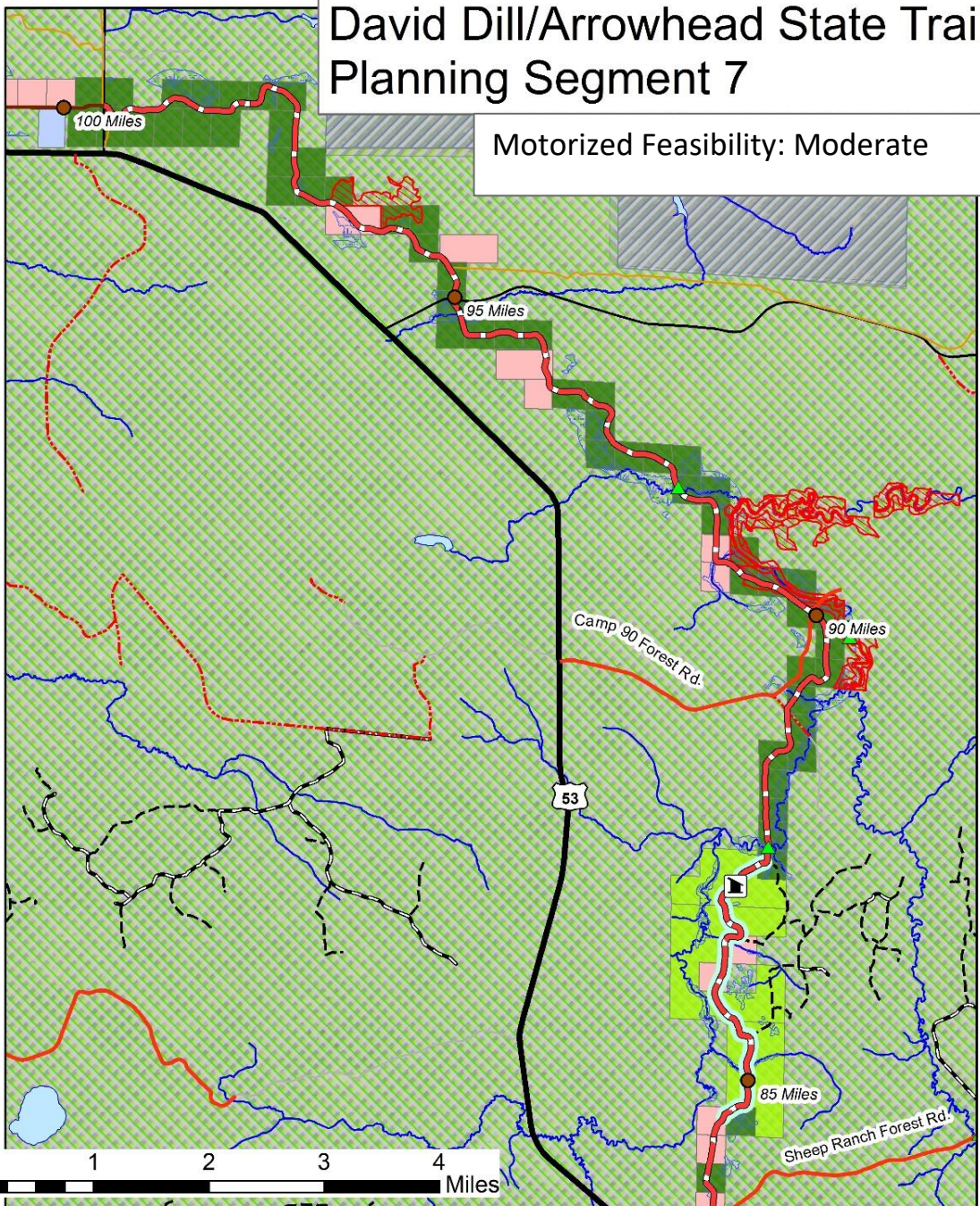


# David Dill/Arrowhead State Trail Planning Segment 7

Motorized Feasibility: Moderate



Legend			
<b>Trails</b>	<b>Roads</b>	<b>Water</b>	<b>Trail Land Management</b>
Trail Planning Segment	DNR System Forest Road	River/Stream	Private-Industrial
Minnesota State Trails	DNR Minimum Maintenance Forest Road	Lake	Private-Non-Industrial
Hunter Walking Trails	U.S. Trunk Highway	Wetlands (within 1/4 mile of trail)	<b>Trail Land Ownership</b>
Minnesota Snowmobile Trails	MN Trunk Highway	County	Scientific and Natural Area
USFS Trail	County Highway	DNR-Ecological and Water Resources	Voyageurs National Park
<b>Infrastructure</b>	Township or Other Road	DNR-Forestry	Superior National Forest Boundaries
State Forest Campgrounds	USFS Road	DNR-Parks and Trails	State Forests - Statutory Boundaries
Trail Bridge	Road-Trail Shared	DNR-Fish and Wildlife	Designated Old Growth
Trail Shelters		US Forest Service	Trail Distance (5 miles)

IGlobe, GeoEye, Earthstar, Geographics, USDA, USGS, AEX, Getmapping, AeroGRID, and the GIS User Community