

# William O'Brien State Park Riverside Trail








Trail begins at parking area near picnic shelter and fishing pier.

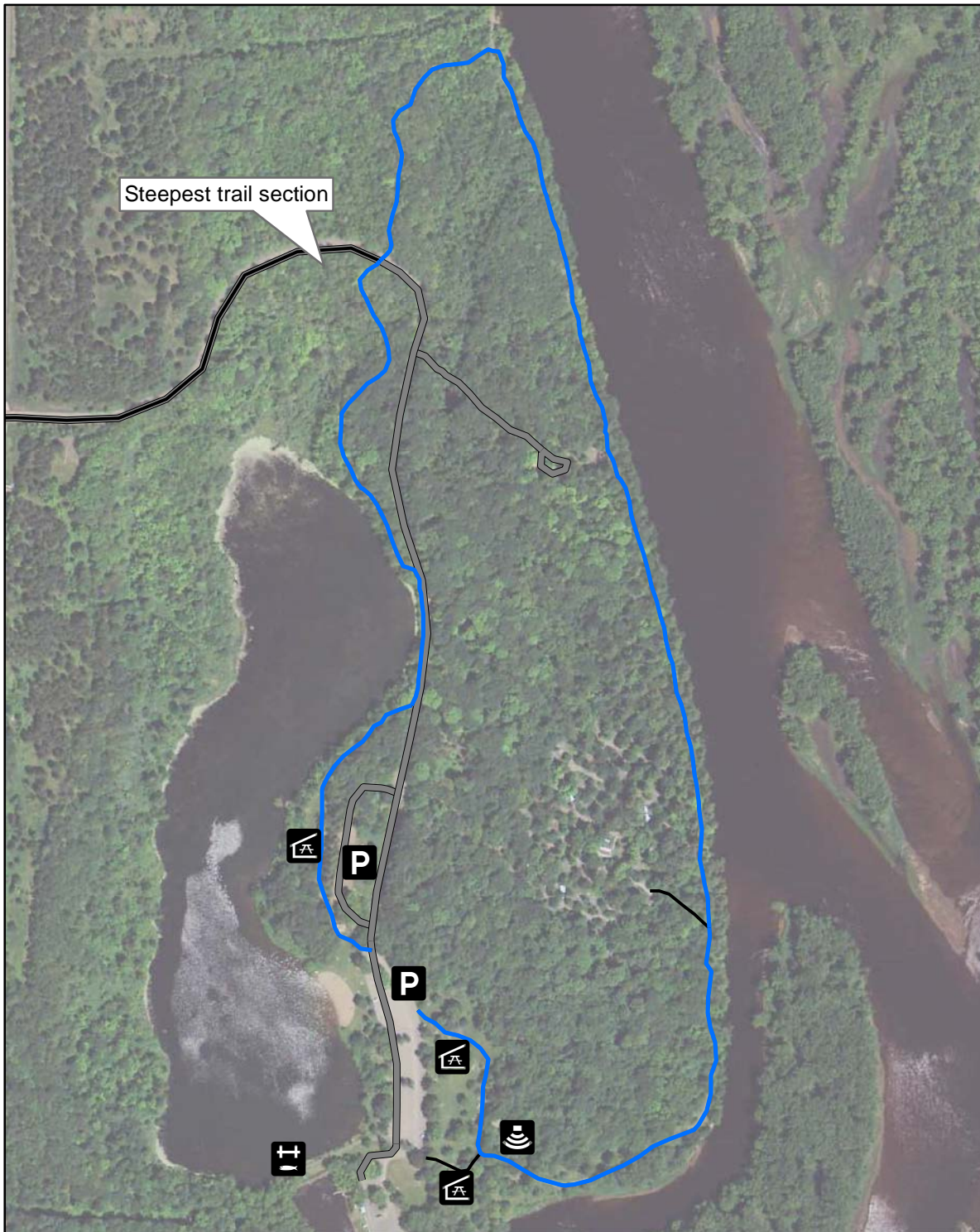
Trail length: 1.5 miles  
 Max grade: 7%  
 Trail width: 3-10 feet  
 Surface: accessible aggregate

Accessible flush toilets are located in the visitor center, picnic area, Riverway campground, and swimming beach.

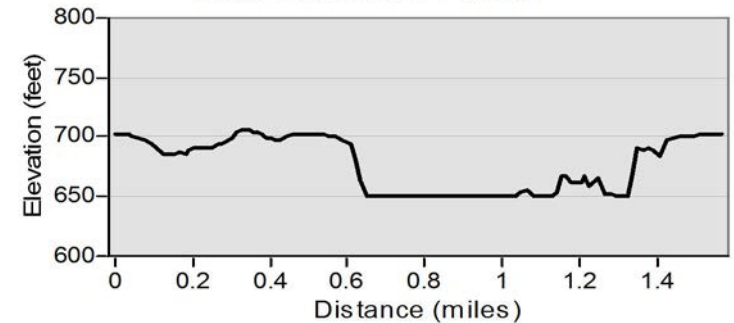
Accessible vault toilets are located in the picnic area and near the swimming beach.

## Legend

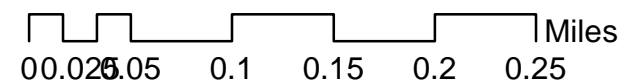
-  Picnic Shelter
-  Fishing Pier
-  Amphitheater
-  Parking
-  Accessible Trail
-  Other Hiking Trails
-  State Park Road



## Trail Elevation Profile



Starting at picnic area and traveling north



## **William O'Brien State Park – Riverside Trail**

The Riverside Trail is a fully accessible 1.5 mile loop that begins at the picnic grounds. It is self-guided with interpretive signs located along the trail. There are rest areas along the trail at approximately every 900 feet, and some of the rest areas have benches.

### **Trail Specifics:**

- Length
  - Trail is 1.5 miles
- Grade
  - Max grade 7% and 2% cross slope.
  - A standard wheelchair ramp is 8%
- Width
  - Typical trail width: 3-10 feet
- Surface
  - Trail surfaces include: accessible aggregate

### **Descriptions:**

Fully accessible: Meets current ADA standards or ADA standards when constructed. Most visitors with disabilities will not need assistance.

Generally accessible: Meets most ADA standards, but has few barriers. Some visitors with disabilities may need assistance.

### **Amenities:**

#### Restroom locations

- Visitor Center: *Generally accessible*
  - Open all year
  - The restroom door may make it difficult to maneuver with a wheelchair.
  - Restroom stall is wider with grab bars.
- Picnic area:
  - Flush toilets: *Generally accessible*
    - Open during the summer
  - Vault toilet: *Generally accessible*
    - Open all year
- Campground: *Fully accessible*
  - Flush toilets in campground can be accessed from Riverside Trail
- Swimming beach:
  - Flush toilets: *Generally accessible*
    - Open during the summer
  - Vault toilets: *Generally accessible*
    - Open all year

#### Parking

- Parking at picnic area: *Generally accessible*
  - Includes upright signs
  - No paved path from parking lot to building; must cross lawn

#### Picnic areas

- Picnic shelter: *Generally accessible*
  - Must cross lawn to access accessible open shelter
  - No fully accessible picnic tables

#### Trails

- Interpretive signs: *Fully accessible*
  - A number of interpretive signs are located along the trail. The signs are low to the ground with large print.
- Rest areas
  - Rest areas are located approximately every 900 feet
  - Some rest areas have benches
- Steepest trail section is on the lakeside of the trail. This section is no longer than 300 feet long.

#### Water sources

- Water fountains: *Fully accessible*
  - Located near amphitheater, in Visitor Center, Park Office, and campground
- No hand pumps are in this park

#### Accessible points of interest within the park

- Fishing pier: *Fully accessible*
- Amphitheater: *Fully accessible*

Contact the park office for more information.