

# RECOGNIZING HAZARDS AND UNSAFE CONDITIONS



# IDENTIFYING SAFETY AND HEALTH PROBLEMS IN THE WORKPLACE

This session will help you identify common types of health and safety hazards in the workplace.



## HEALTH

- Common types of hazards
- How hazards enter your body
- Levels of exposure
- Types of health effects



## SAFETY

- Common types of hazards
- Slips, trips and falls
- Caught-in or struck-by
- Fire and explosions
- Transportation and vehicles
- Confined spaces
- Workplace violence

# IDENTIFYING HEALTH AND SAFETY PROBLEMS IN THE WORKPLACE



Do you or your coworkers have injuries or health complaints?



When do you or your coworkers feel these symptoms?



Where in the workplace are safety and health problems occurring?



What are the conditions that are causing problems?

# COMMON TYPES OF HEALTH HAZARDS IN THE WORKPLACE

## CHEMICAL HAZARDS

Pesticides



Solvents



Flammables



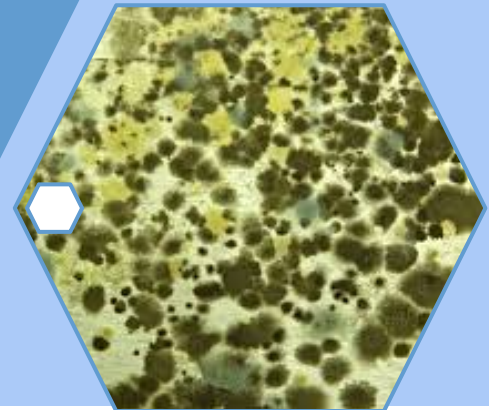
# COMMON TYPES OF HEALTH HAZARDS IN THE WORKPLACE

## BIOLOGICAL HAZARDS

Bloodborne Disease



Mold



Tickborne Illnesses



# COMMON TYPES OF HEALTH HAZARDS IN THE WORKPLACE

## PHYSICAL HAZARDS

Noise



Heat & Cold



Vibration



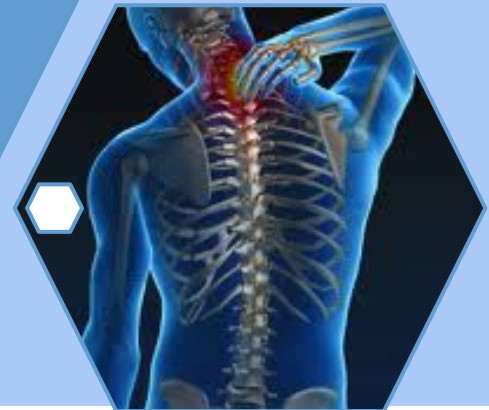
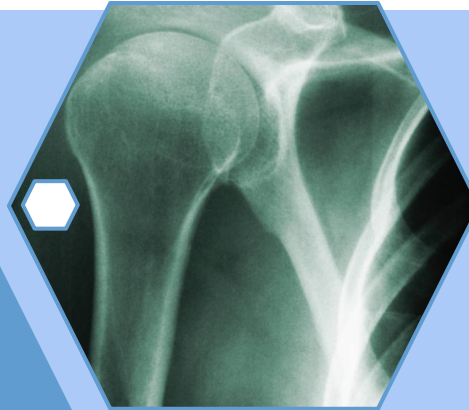
# COMMON TYPES OF HEALTH HAZARDS IN THE WORKPLACE

## ERGONOMIC HAZARDS

Repetitive Strain Injuries

Musculo-skeletal Disorders

Sprains and Strains

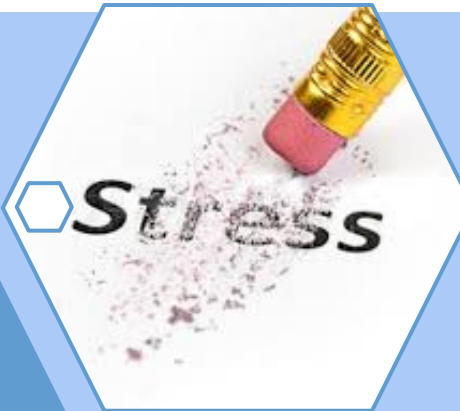


# COMMON TYPES OF HEALTH HAZARDS IN THE WORKPLACE

## PSYCHOLOGICAL HAZARDS



STRESS!



“Do more  
with less”

Emergency  
Response





# HOW HEALTH HAZARDS ENTER YOUR BODY

Breathing



Skin Absorption



Routes of Entry

Swallowing

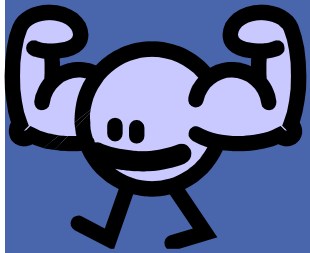


Cuts and Punctures

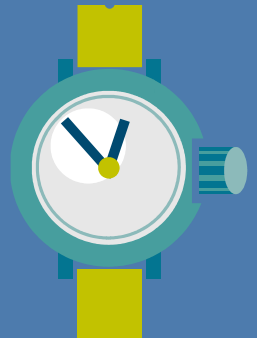


# THE HARM CAUSED BY HEALTH HAZARDS DEPENDS ON...

Strength or potency of  
the hazard



How long you are  
exposed

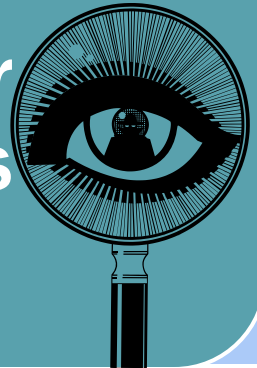


How harmful  
is it?

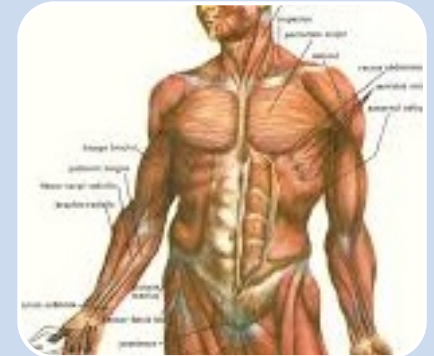


Amount of hazard that  
is present

Part of your  
body that is  
exposed



# TYPES OF HEALTH EFFECTS



## ACUTE

The effect shows up right away

## CHRONIC

The effect shows up after a long period of exposure, or long after the exposure

## LOCAL

Only the body part that was exposed is affected

## SYSTEMIC

The agent enters the body and affects other parts

# CANCER

Many diseases in  
different parts of the  
body

Caused by  
carcinogens



No totally safe level of  
exposure to something  
that causes cancer

May develop 10, 20 or  
more years after  
exposure

# REPRODUCTIVE EFFECTS

## Both Men and Women Can be Affected

Infertility

Miscarriage

Birth defects

Developmental  
Disorders in  
Children



# SENSITIZATION

Can  
develop  
over time

Allergies or  
sensitivity to  
chemicals or other  
agents

First time  
exposures may  
not have  
symptoms



# COMMON TYPES OF SAFETY HAZARDS IN THE WORKPLACE



The diagram features a central cluster of three blue hexagons on a light blue background. Each hexagon is connected to a larger hexagonal image. The top hexagon is connected to a yellow triangular warning sign showing a person falling. The bottom-left hexagon is connected to a close-up of orange and yellow flames. The bottom-right hexagon is connected to a detailed view of mechanical gears and machinery. Small white hexagons are placed at the points where the central hexagons meet.

Slips, Trips  
and Falls

Caught- in  
or struck-  
by

Fire and  
Explosions

# COMMON TYPES OF SAFETY HAZARDS IN THE WORKPLACE

Motor  
vehicle  
crashes



Confined  
spaces



Violence





# SLIPS, TRIPS AND FALLS



**Bad  
housekeeping**

**Poor drainage**

**Snow and ice**

**Stairs**

# SLIPS, TRIPS AND FALLS



**Electrical  
cords, hoses,  
and  
improperly  
stored  
equipment  
can pose trip  
hazards**

**Look for trip hazards in the office, shop and worksite**

# SLIPS, TRIPS AND FALLS



**You can fall if not provided with fall protection equipment, guardrails and safe ladders**

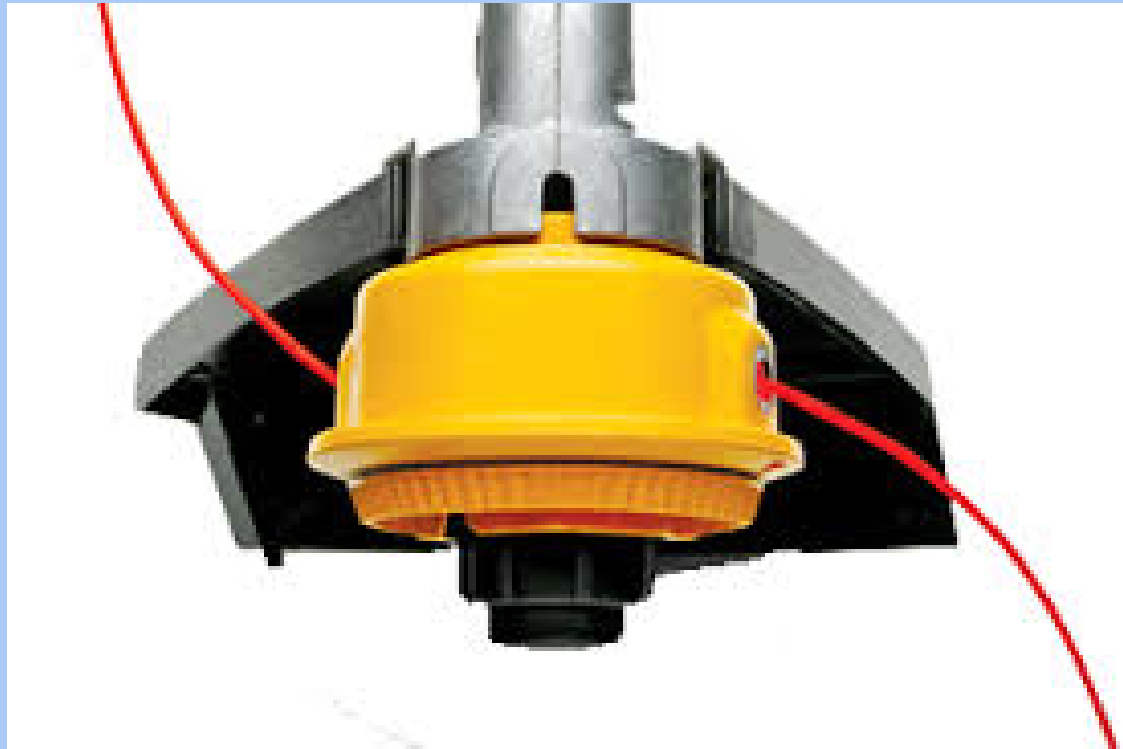
# CAUGHT-IN AND STRUCK-BY MACHINES AND EQUIPMENT

You can get parts of your body caught in or struck by exposed moving parts if machines are not properly guarded or locked out during repairs



# CAUGHT-IN AND STRUCK-BY MACHINES AND EQUIPMENT

You can be  
struck by  
flying objects  
from  
machines  
without  
protective  
guards





# FIRE AND EXPLOSIONS



**Improper labeling, handling or storage of certain materials can pose a risk of fire or explosion**

# FIRE AND EXPLOSIONS



**Every workplace must have an evacuation plan for getting people out of a building in case of fire or other emergency**

**All staff must receive training on what to do in case of emergency**

# TRANSPORTATION AND VEHICLE-RELATED CRASHES



**Operators of vehicles and equipment can be injured or cause injury to citizens if equipment is unsafe or if adequate training has not been provided**



# TRANSPORTATION AND VEHICLE-RELATED CRASHES



**You can be seriously injured or killed if hit by  
a vehicle when working on or  
near the roadway**

# CONFINED SPACES



**A confined space is an area with small openings for a worker to enter and exit and is not designed for regular work.**

**Examples in the DNR include manholes, sewers, and tanks.**

# WORKPLACE VIOLENCE

## WORKPLACE VIOLENCE

Homicide

Physical Assault

Verbal Abuse

Sexual  
Harassment





**QUESTIONS ABOUT  
RECOGNIZING AND  
REPORTING HAZARDS?**

**ASK YOUR SUPERVISOR  
OR A MEMBER OF THE  
SAFETY PROGRAM  
STAFF**

**Safety & Risk  
Supervisor  
651-259-  
5471**

**Safety Admin.  
NW/NE  
Regions  
218-999-**

**Safety Admin.  
CENTRAL/  
SOUTHERN  
Regions  
651-259-  
5489**