

## Conservation Challenges:

- \*Conversion to agricultural uses
- \*Changes in agricultural practices
- \*Deforestation/logging
- \*Increased draitiling makes stream flow more flashy, reduces groundwater
- \*Fluctuating/declining river levels
- \*Invasive spp.: Buckthorns, Eurasian honeysuckle, garlic mustard, leafy spurge, EAB
- \*Habitat fragmentation
- \*Eutrophic lakes
- \*Agricultural water pollutants/sedimentation
- \*Fire-dependent communities are likely to decline due to difficulty in restoring natural fire regimes

## Conservation Opportunities:

- \* Minnesota Prairie Plan
- \* Close to other OAs
- \* White Earth Land Recovery Project

## Existing Conservation Network:

State Parks:

State Forests: White Earth

SNAs:

Wildlife Management Areas:  
Sugarbush Lake

Aquatic Management Areas:  
White Earth  
Strawberry Lake  
Big Sugarbush  
Sargent Lake

State Forests: White Earth

SNAs:

Wildlife Production Areas:  
Borgrud  
Clark  
Edwin Lake  
Krebsback  
Little Oak Lake  
Paul Jr.  
Rothschadl

## Rare Species:

- Caddisfly (2 species)
- Bald Eagle
- Cerulean Warbler
- Colonial Waterbird Nesting Site
- Cooper's Milk-vetch
- Humped Bladderwort
- Lake Sturgeon
- Pugnose Shiner
- Red-shouldered Hawk
- Small White Lady's slipper
- Trumpeter Swan

# White Earth Lakes Opportunity Area

## Ecological Significance:

The White Earth Lakes Opportunity Area is located within the upper terrace of the Agassiz Basin farther to the east than most of the other Agassiz prairies. It contains a number of wetland and fen types, and is in the transitional zone from prairie to brush-prairie to woodland and forest. Therefore, it contains a number of shrub and forest communities and areas of Aspen Parkland. The Area straddles a moisture transect great enough to capture Sugar Maple-Basswood-Aspen forest and Northern Wet-Mesic Boreal Hardwood-Conifer Forest in its eastern flanks. This may have the greatest variety of arboreal communities of any of the Opportunity Areas located along and near the Red River Valley.



## Counties:

Becker  
Mahnomen

## Rare Native Plant Communities:

Northern Rich Tamarack Swamp (Western Basin)  
Sugar Maple - Basswood - (Aspen) Forest

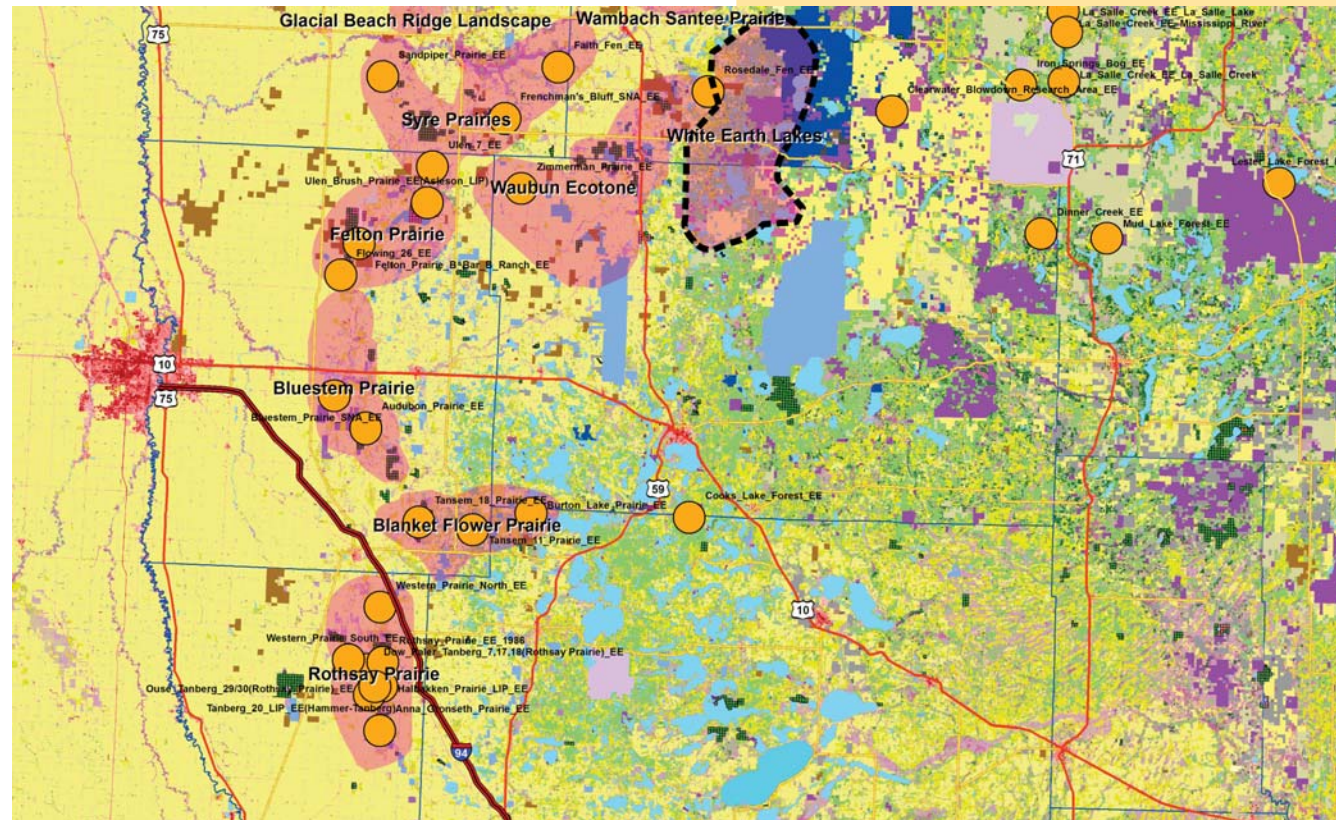
## Ecological Evaluations:



Photo courtesy of Mark Peterson, Audobon Minnesota

# White Earth Lakes

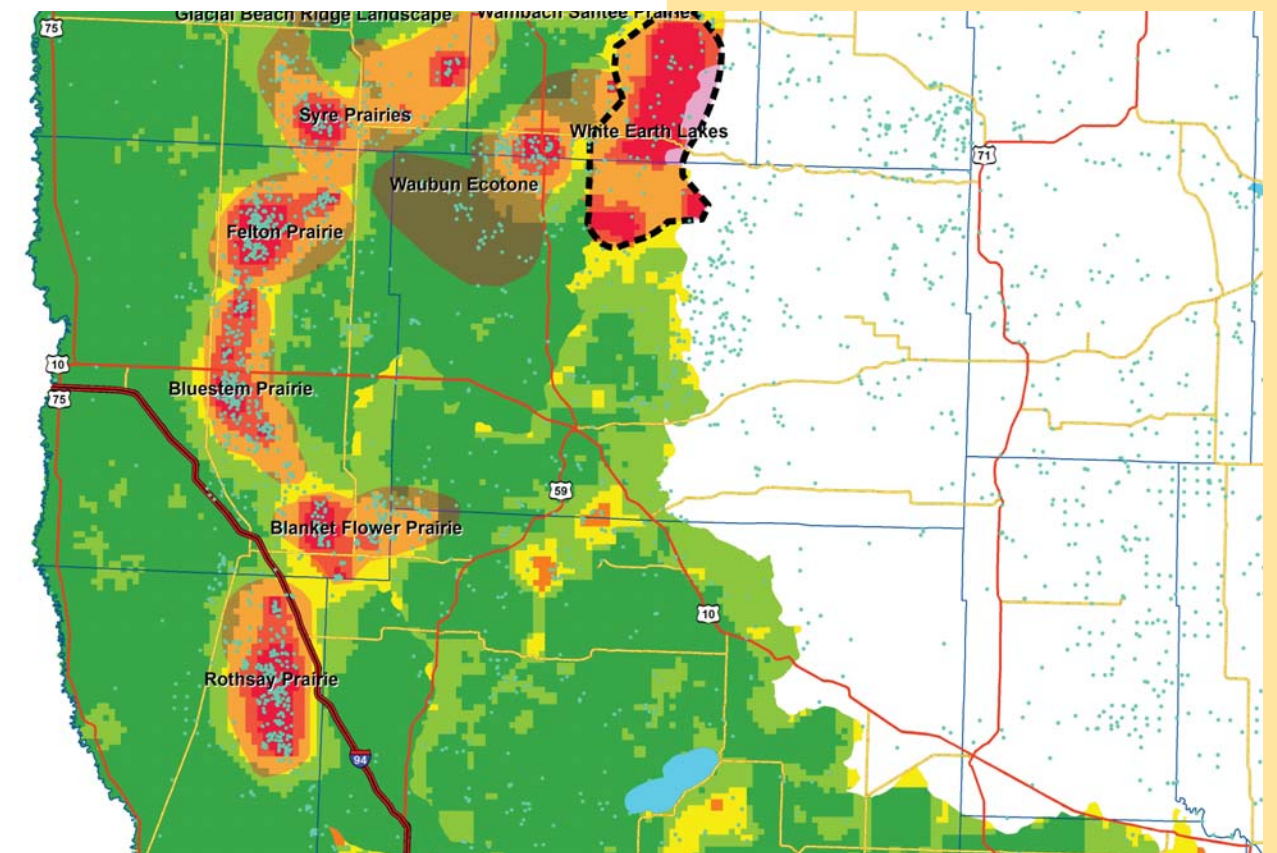
## Ecological Evaluations, Land Cover, Public Ownership






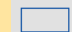



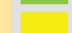



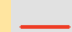

Please see Legend at the front of the Opportunity Area Descriptions for a key to this map

# White Earth Lakes

## Marxan Prioritization, Element Occurrences,



### Legend

-  Profiled COA
  -  Conservation Opportunity Area
  -  Rare Feature
  -  County Boundary
  -  Large Lake
- Marxan Conservation Prioritization**
-  Lowest Priority
  -  Low Priority
  -  Medium Priority
  -  High Priority
  -  Highest Priority
  -  Interstate Highway
  -  U.S. Trunk Highway
  -  MN Trunk Highway