

Waubun Ecotone

Conservation Challenges:

- *Conversion to agricultural uses
- *Changes in agricultural practices
- *Deforestation/logging
- *Increased draitiling makes stream flow more flashy, reduces groundwater
- *Fluctuating/declining river levels
- *Invasive spp.: Buckthorns, Eurasian honeysuckle, garlic mustard, leafy spurge, EAB
- *Habitat fragmentation
- *Eutrophic lakes
- *Agricultural water pollutants/sedimentation
- *Fire-dependent communities are likely to decline due to difficulty in restoring natural fire regimes

Conservation Opportunities:

- * Minnesota Prairie Plan
- * Close juxtaposition to other OAs

Existing Conservation Network:

State Parks:

State Forests:

SNAs:

Wildlife Management Areas:

- Coburn
- Ogema Springs
- Pednor
- Spring Creek
- Santwire
- Waubun

Aquatic Management Areas:

Rare Species:

- Alkali Cord-grass
- American Bittern
- Bald Eagle
- Beaked Spike-rush
- Cooper's Milk-vetch
- Creek Heelsplitter
- English Sundew
- Felwort
- Few-flowered Spike-rush
- Greater Prairie-chicken
- Hair-like Beak-rush
- Horned Grebe
- Humped Bladderwort
- Lake Sturgeon
- Linear-leaved Sundew
- Marbled Godwit
- Marsh Arrow-grass
- Nelson's Sparrow
- Northern Singlespike Sedge
- Powesheik Skipper
- Sandhill Crane
- Short-eared Owl
- Small White Lady's Slipper
- Sterile Sedge
- Trumpeter Swan
- Twig-rush
- Upland Sandpiper
- Whorled Nut-rush
- Wilson's Phalarope
- Yellow Rail

Waubun Ecotone Opportunity Area

Ecological Significance:

The Waubun Ecotone Opportunity Area is located within the upper terrace of the Agassiz Basin farther to the east than most of the other Agassiz prairies. It contains a number of wetland and fen types, and is in the transitional zone from prairie to brush-prairie to woodland and forest. Therefore, it contains a number of shrub communities and areas of Aspen Parkland.



Counties:

- Becker
- Clay
- Mahnomen

Rare Native Plant Communities:

- Calcareous Fen (Northwestern)
- Dry Hill Prairie (Northern)
- Mesic Prairie (Northern)
- Tamarack Seepage Swamp (Aspen Parkland)
- Wet Prairie (Northern)

Ecological Evaluations:

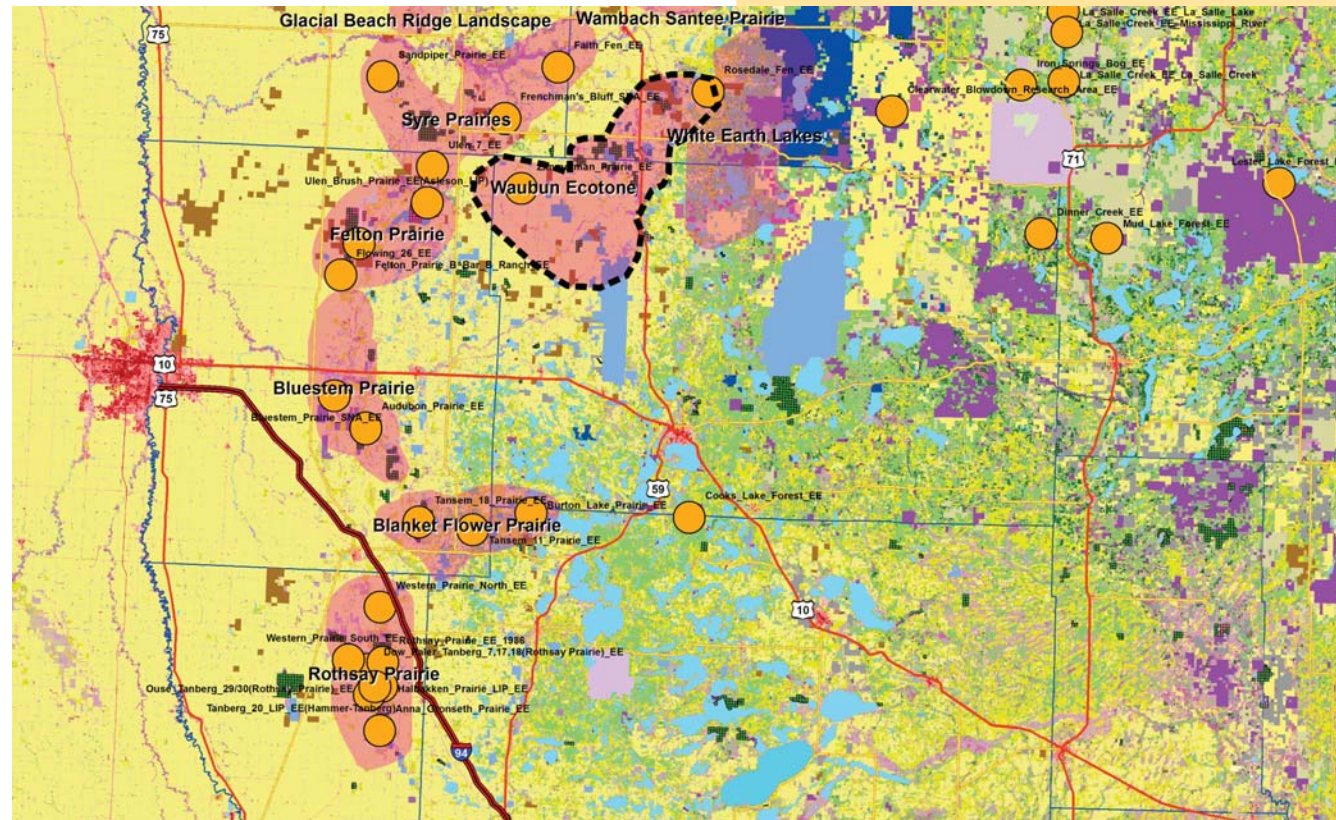
- Rosedale Fen
- Zimmerman Prairie



Photo courtesy of Mark Peterson, Audobon Minnesota

Waubun Ecotone

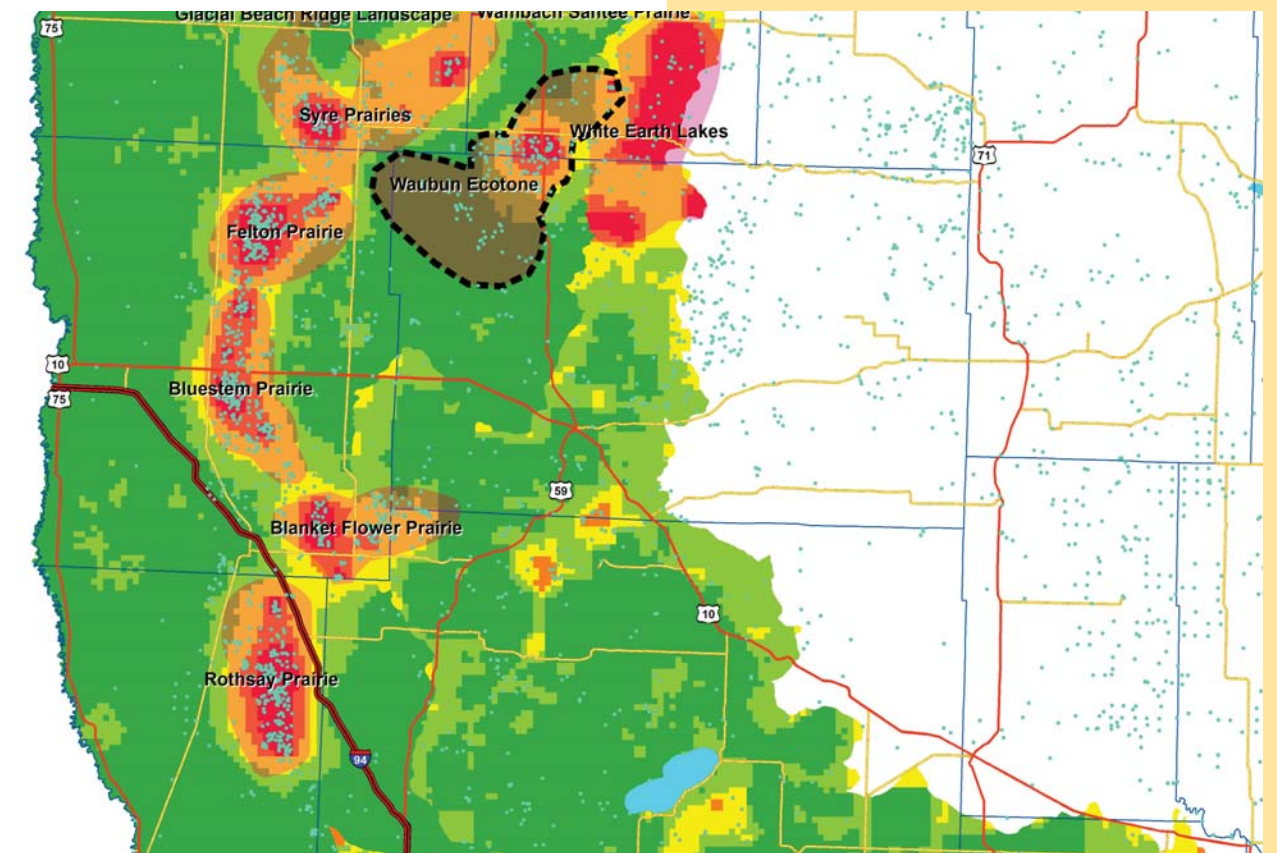
Ecological Evaluations, Land Cover, Public Ownership






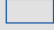


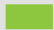




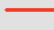

Please see Legend at the front of the Opportunity Area Descriptions for a key to this map

Waubun Ecotone

Marxan Prioritization, Element Occurrences



Legend

-  Profiled COA
 -  Conservation Opportunity Area
 -  Rare Feature
 -  County Boundary
 -  Large Lake
- Marxan Conservation Prioritization**
-  Lowest Priority
 -  Low Priority
 -  Medium Priority
 -  High Priority
 -  Highest Priority
 -  Interstate Highway
 -  U.S. Trunk Highway
 -  MN Trunk Highway