

Wambach Santee Prairie

Conservation Challenges:

- * Conversion to agricultural uses
- * Changes in agricultural practices
- * Increased draitiling makes stream flow more flashy, reduces groundwater percolation
- * Fluctuating/declining river levels
- * Invasive spp.: Buckthorns, Eurasian honeysuckle, garlic mustard, leafy spurge, EAB
- * Habitat fragmentation
- * Agricultural water pollutants/sedimentation
- * Fire-dependent communities are likely to decline due to difficulty in restoring natural fire regimes

Conservation Opportunities:

- * Minnesota Prairie Conservation Plan
- * Close juxtaposition to other OAs

Existing Conservation Network:

State Parks:

State Forests:

SNAs: Santee Prairie

Wildlife Management Areas:

Beaulieu	Rush
Bejou	Vanose
Dittmer	Wambach
Foot	Warren
Loncrace	
Mahgre	

Aquatic Management Areas:

Rare Species:

- Alkali Cord-grass
- Alkali Grass
- American Bittern
- Bald Eagle
- Burrowing Owl
- Cooper's Milk-vetch
- Greater Prairie-chicken
- Hall's Sedge
- Marbled Godwit
- Powesheik Skipper
- Sandhill Crane
- Small White Lady's Slipper
- Upland Sandpiper
- Widgeon-grass
- Wilson's Phalarope

Wambach Santee Prairie Opportunity Area

Ecological Significance:

The Wambach Santee Prairie Opportunity Area is located within the upper terrace of the Agassiz Basin farther to the east than most of the other Agassiz prairies. It contains a number of wetland and fen types, and is in the transitional zone from prairie to brush-prairie to woodland and forest. Therefore, it contains a number of shrub communities and areas of Aspen Parkland. It has a known breeding concentration of sand hill cranes. the Opportunity Area has a substantial number of Wildlife Management Areas.



Counties:

Mahnomen

Rare Native Plant Communities:

- Mesic Brush-Prairie (Northern)
- Mesic Prairie (Northern)
- Prairie Rich Fen
- Wet Prairie (Northern)
- Wet Seepage Prairie (Northern)

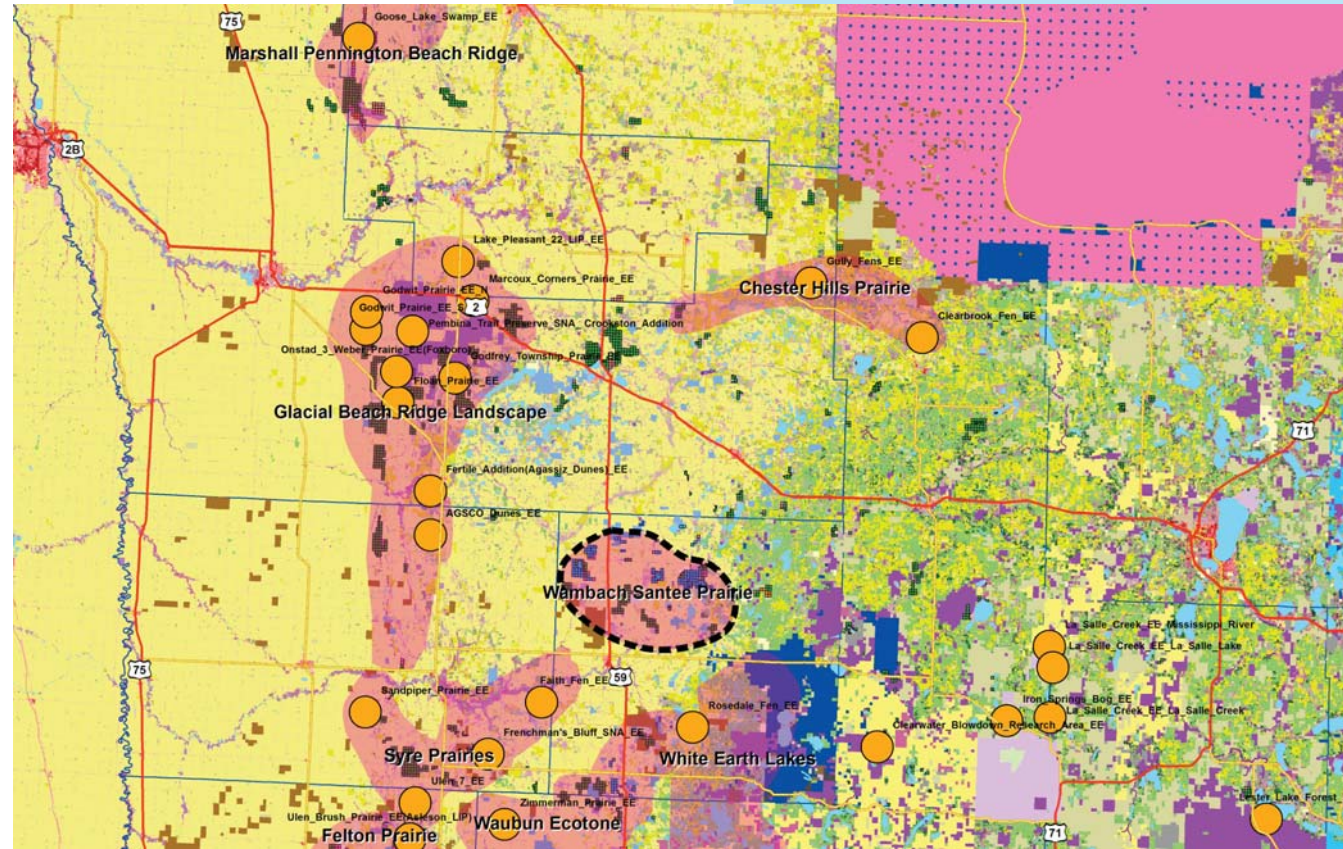
Ecological Evaluations:



Photo courtesy of minnesotaseasons.com

Wambach Santee Prairie

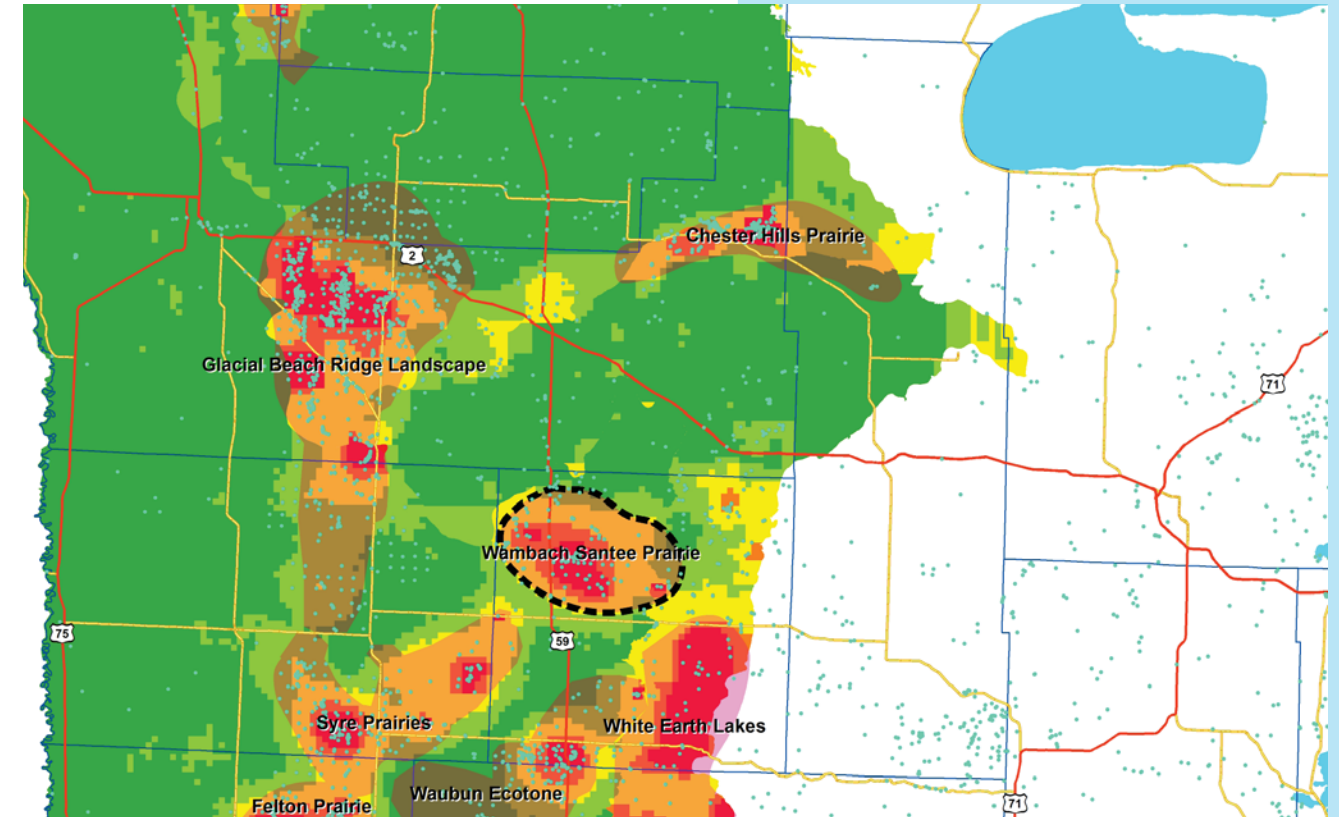
Ecological Evaluations, Land Cover, Public Ownership



Please see Legend at the front of the Opportunity Area Descriptions for a key to this map

Wambach Santee Prairie

Marxan Prioritization, Element Occurrences



Legend

- Profiled COA
- Conservation Opportunity Area
- Rare Feature
- County Boundary
- Large Lake

Marxan Conservation Prioritization

- Lowest Priority
- Low Priority
- Medium Priority
- High Priority
- Highest Priority
- Interstate Highway
- U.S. Trunk Highway
- MN Trunk Highway