

Conservation Challenges:

- *Urbanization
- *Conversion to agricultural uses
- *Changes in agricultural practices
- *Increased dewatering makes stream flow more flashy, reduces groundwater
- *Fluctuating/declining groundwater levels
- *Invasive spp.: Buckthorns, Eurasian honeysuckle, garlic mustard, leafy spurge, EAB
- *Habitat fragmentation
- *Agricultural water pollutants/sedimentation
- *Fire-dependent communities are likely to decline due to difficulty in restoring natural fire regimes

Conservation Opportunities:

- * Watershed is engaged in natural resource management planning

Existing Conservation Network:

State Parks: St. Croix
St. Croix Wild River

State Forests: Chengwatana

SNAs:

Wildlife Management Areas:
McGowan
Rock Marsh

National Wild and Scenic River:
St. Croix

Ecological Evaluations:

Goose Creek Natural Area
Rush Lake Island
Natural Area
St. Croix Natural Area

Rare Features:

A Jumping Spider	Humped Bladderwort	Spike
American Bittern	Kitten-tails	St. Croix Snaketail
American Ginseng	Lake Sturgeon	St. Lawrence Grape fern
American Water-pennywort	Leafless Water Milfoil	Stemless Tick-trefoil
Bald Eagle	Least Moonwort	Thread-like Naiad
Barren Strawberry	Long-bearded Hawkweed	Torrey's Manna-grass
Black Sandshell	Louisiana Waterthrush	Trumpeter Swan
Blanding's Turtle	Mucket	Twig-rush
Blanchard's Cricket Frog	Mussel Sampling Site	Vasey's Pondweed
Blue Sucker	Northern Barrens Tiger Beetle	Walter's Barnyard Grass
Blunt-lobed Grapefruit	Northern Cricket Frog	Wartyback
Bog Bluegrass	Northern Goshawk	Waterwillow
Butternut	Old Field Toadflax	White Adder's-mouth
Buttonbush	Olivaceous Spike-rush	White Baneberry
Cerulean Warbler	Pallid Shiner	Whorled Loosestrife
Creek Heelsplitter	Peregrine Falcon	Wood Turtle
Eastern Hemlock	Purple Wartyback	Yellow Rail
Eastern Hognose Snake	Purple-flowered Bladderwort	
Elktoe	Red-shouldered Hawk	
False Mermaid	Rhombic-petaled Evening Primrose	
Fluted-shell		
Four-toed Salamander	Robbin's Spike-rush	
Gilt Darter	Round Pigtoe	
Gopher snake	Salamander Mussel	
Halberd-leaved Tearthumb	Snailseed Pondweed	
Henslow's Sparrow	Southern Brook Lamprey	
Hickorynut	Spectaclecase	
Hill's Thistle		

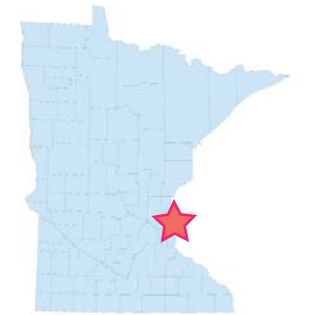


© MN DNR

Upper St. Croix Valley Opportunity Area

Ecological Significance:

The St. Croix River Valley has great importance ecologically, recreationally, and as a scenic resource. A variety of plant communities and plant and animal species find suitable habitat outside of their native range along the varied niches that the valley provides. The valley is an important migratory flyway also. Some of the most familiar places of geological significance are located along the valley, such as Taylor's Falls/Interstate Park gorge, Cedar Bend, and the Kettle River Rapids. The St. Croix is familiar to many as it provides a conduit for northern species such as eastern white pine to extend its range much farther south within Minnesota, and thus brings features of the Laurentian landscape much closer to the developing fringes of the Twin Cities.



Counties:

Chisago
Pine

Rare Native Plant Communities:

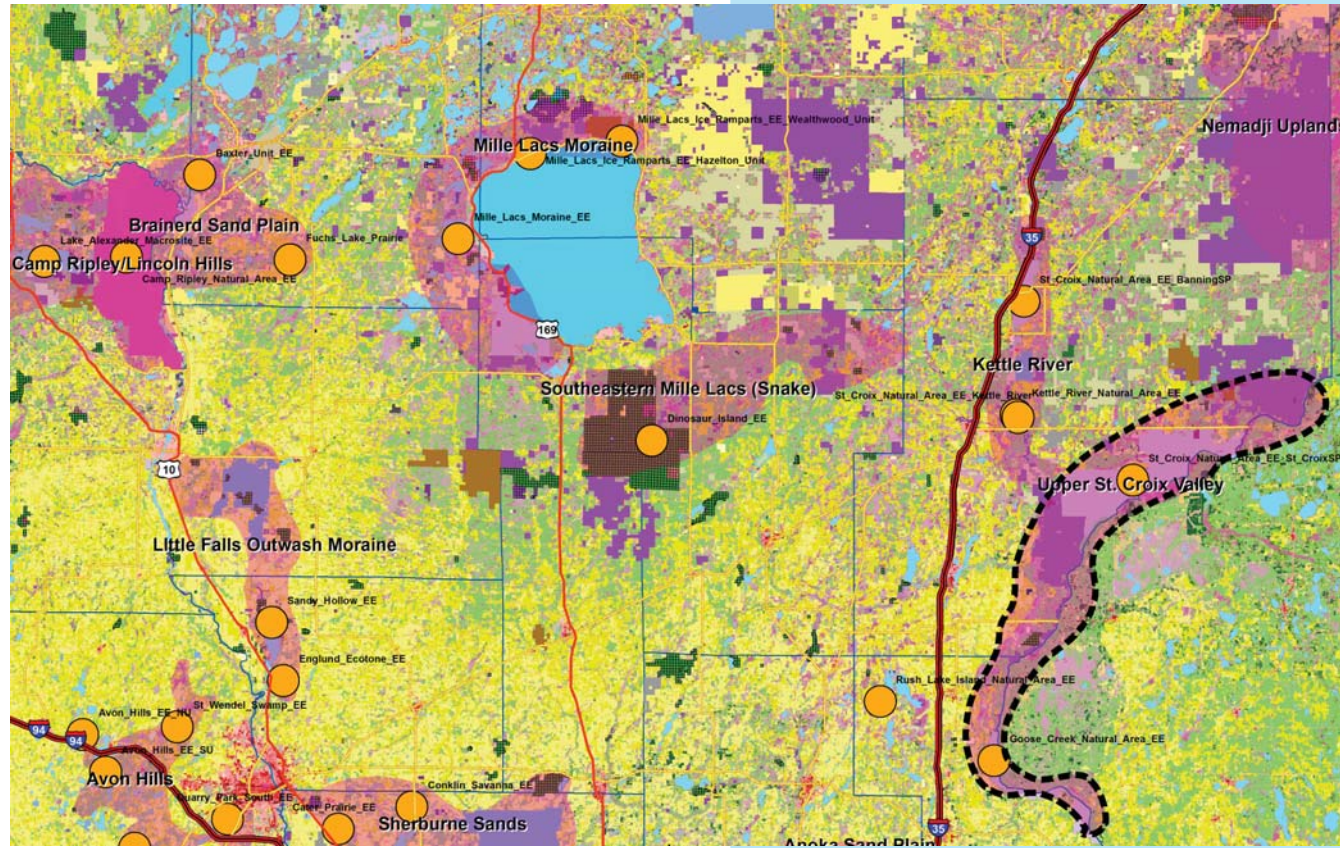
Aspen - Birch - Basswood Forest
Basswood - Black Ash Forest
Black Ash - (Red Maple) Seepage Swamp
Central Dry Oak-aspen (Pine) Woodland
Central Dry-Mesic Oak-Aspen Forest
Colonial Waterbird Nesting Site
Gravel/cobble Beach (River)
Jack Pine - Oak Woodland
Northern Wet Meadow/Carr
Oak - Aspen - Red Maple Forest
Red Oak - Basswood Forest (Noncalcareous Till)
Red Oak - Sugar Maple - Basswood - (Large-Flowered Trillium) Forest
Silver Maple - (Virginia Creeper) Floodplain Forest
Tamarack Swamp (Southern)
Willow - Dogwood Shrub Swamp



Photo courtesy of John Gregor

Upper St. Croix Valley

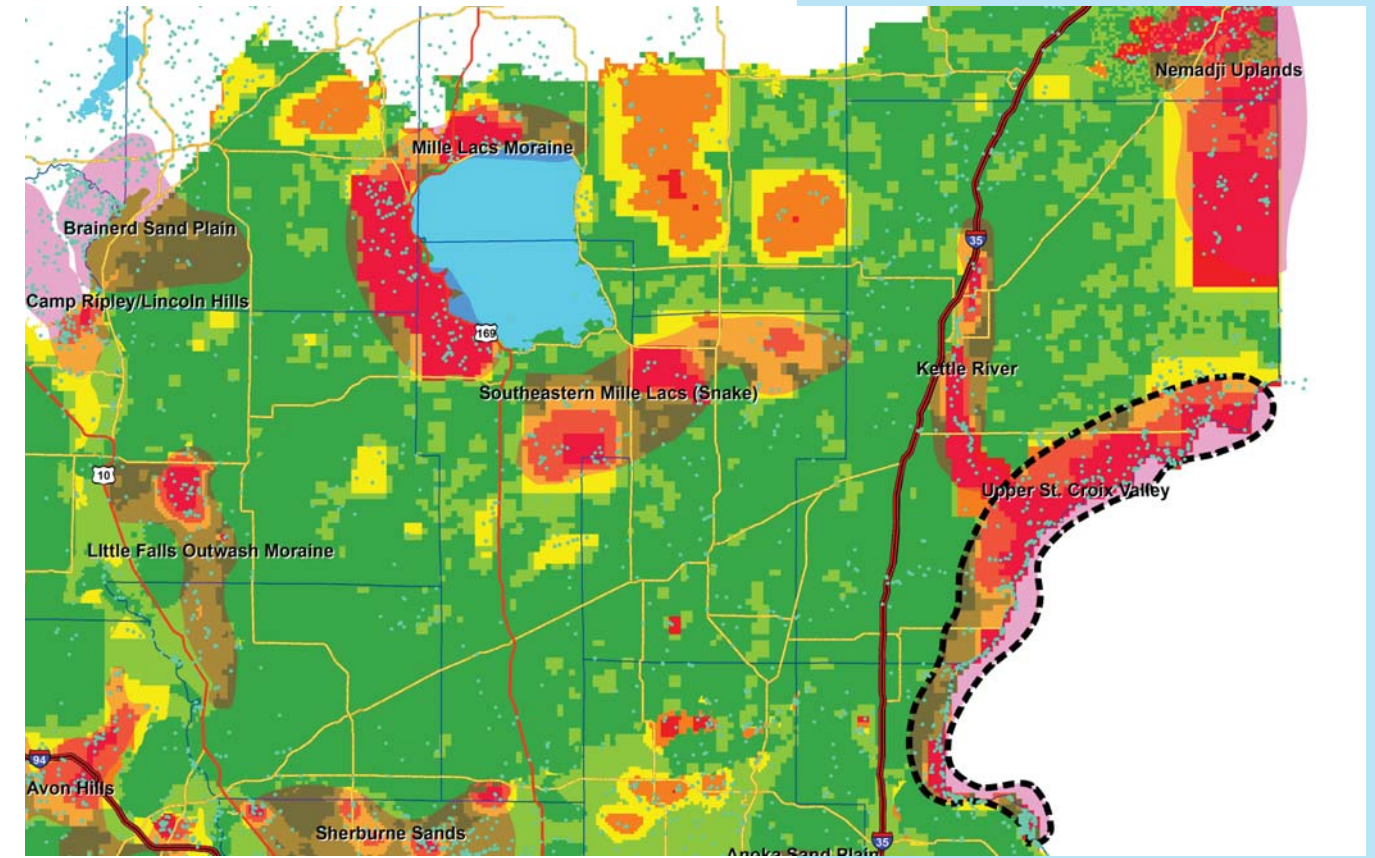
Ecological Evaluations, Land Cover, Public Ownership



Please see Legend at the front of the Opportunity Area Descriptions for a key to this map

Upper St. Croix Valley

Marxan Prioritization, Element Occurrences



Legend

- Profiled COA
 - Conservation Opportunity Area
 - Rare Feature
 - County Boundary
 - Large Lake
- Marxan Conservation Prioritization**
- Lowest Priority
 - Low Priority
 - Medium Priority
 - High Priority
 - Highest Priority
 - Interstate Highway
 - U. S. Trunk Highway
 - MN Trunk Highway